

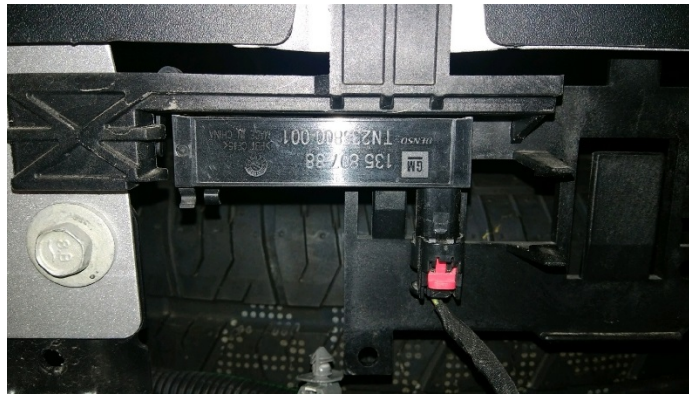


RANCH HAND
PROTECT YOUR TRUCK
1-800-366-9712

INSTALLATION INSTRUCTIONS

2020+ CHEVROLET 2500HD/3500HD SPORT BACK BUMPER PART # SBC201BLSL

1. Remove the license plate.
2. On some models there will be one or two sensors behind the license plate, you will need to unplug them to move forward.



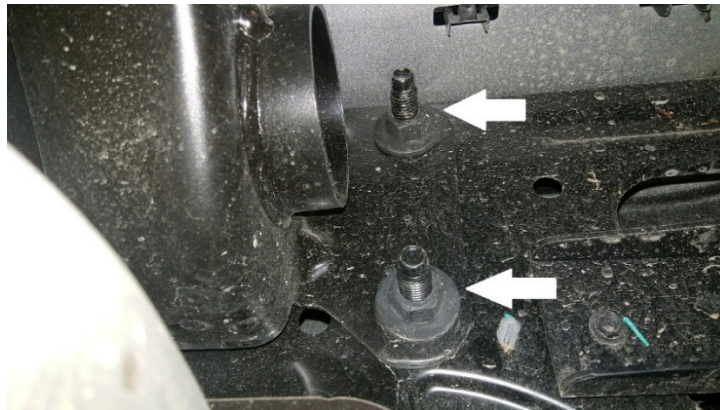
3. Unplug and remove the trailer plug.
4. Unhook the license plate and sensor wiring harness.



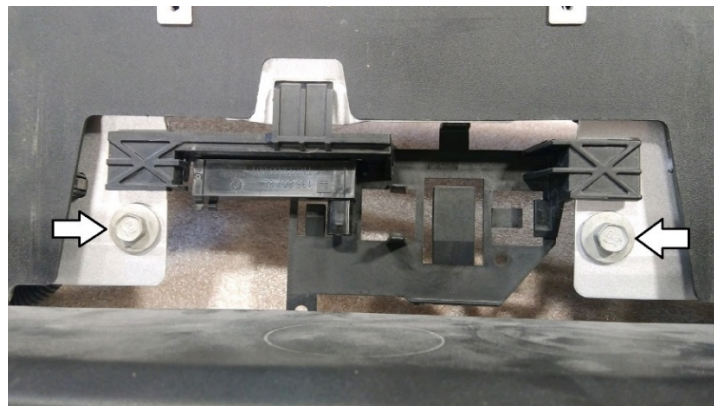
5. Remove the bottom 13mm bolts from the side bumper brackets. Then loosen the top 21mm bolts.



6. Remove the four 18mm nuts of the bumper brackets.



7. Remove the two 13mm bolts that are located behind the license plate and remove bumper.



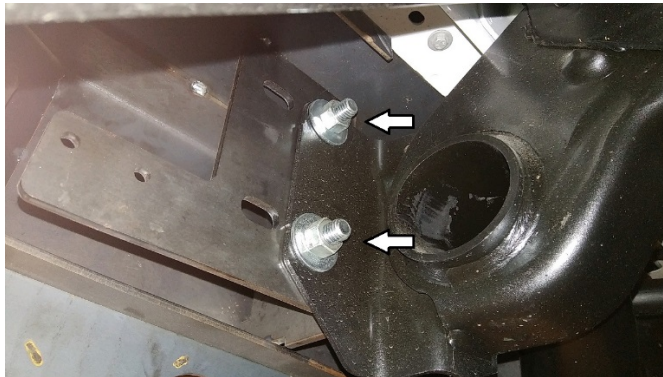
8. Before installing the Sport Back Bumper mount the sensor and factory bracket to the sensor bracket provided. Then mount the bracket to the tabs, using the existing factory bolts, that were located behind the license plate.



9. If the vehicle is equipped with A.D.A.S. (Advanced Driver Assist System) remove them from the factory bumper and mount to the two small holes located on the mounting bracket. You will need to drill the hole to $\frac{1}{4}$ " and then mark and drill another hole in-line with the second hole of the bracket. Put the white plastic spacers between the mounting bracket and the ADAS bracket.



10. Install the bumper by using the $\frac{1}{2}$ " hardware included in your bolt pack. You will use the inner holes.



11. Mount the factory side bumper bracket to the tab located under the enc cap. Use the $\frac{5}{16}$ " hardware.



12. Center bumper from side to side and then tighten all bolts and nuts.

13. Install the trailer plug and spare tire lock.
14. Install the rubber grommets into the holes in the skirt for the sensors. We recommended using a little WD-40 in the grommet to help with install of sensors.
15. Install the license plate and then license plate lights. Wire them into the factory license plate light harness.
16. Install the reverse lights and wire them into the trailer plug harness.

MAKE SURE ALL NUTS AND BOLTS ARE TIGHT!

----- **WARNING** -----

Special care should be exercised in the handling, storage and installation of Ranch Hand equipment. The actual weight of each piece of equipment will vary depending on style and model. The weight of the equipment is sufficient in volume to warrant special care, assistance and in some instances, the use of mechanical equipment during the transfer and installation of the equipment. Do not assume a position directly under the equipment during installation. Be sure the equipment has been connected and stabilized during installation to prevent falling or shifting of positions. Periodically check tightness of bolts to make sure they are tight, and unlikely to fail.

10/17/19