

WINCH



NON-WINCH



INSTALL INSTRUCTIONS

SAHARA FRONT BUMPER

Product Range : 316XX

Application : 2016 + CHEVROLET 1500

I WARNING

Read the instructions completely before beginning installation. Before tightening bolts, drilling or cutting where required, check to make sure there are no obstructions such as brake, fuel or electrical lines which may be damaged. Also keep in mind this is an after-market product and MAY require minor shimming and/or trimming, reaming, etc. for proper fit. Road Armor is not responsible for any damages to vehicle.

ⓘ IMPORTANT NOTICE

- Be sure to inspect and test fit your product to ensure proper fitment before having it coated, painted, bed lined, etc.
- Road Armor will not be responsible for the cost of coating your unit if any problems with fit or finish are not noted and addressed beforehand.

SAFETY FIRST!

- FOLLOW ALL INSTRUCTIONS, YOUR SAFETY AND THE SAFETY OF OTHERS IS MOST IMPORTANT.
- WEAR APPROPRIATE EYE PROTECTION AND EXERCISE CAUTION WHEN DRILLING / CUTTING

REQUIRED TOOLS

SAE & Metric Sockets and Wrenches

Black Spray Paint

Adjustable Pliers

Tape Measure

Drill

INCLUDED HARDWARE

5 2" Single Bolt Tab

4 1.093 Dome Plug

11 1.5" SINGLE BOLT TAB (ZINC)

1 Logo Kit Hardware

16 1/2" Flat Washer

1 Winch Kit Hardware

16 1/2" Split Lock Washer

1 Logo

16 1/2"-13 Grade 8 Hex Nut

2 Retainer Clips

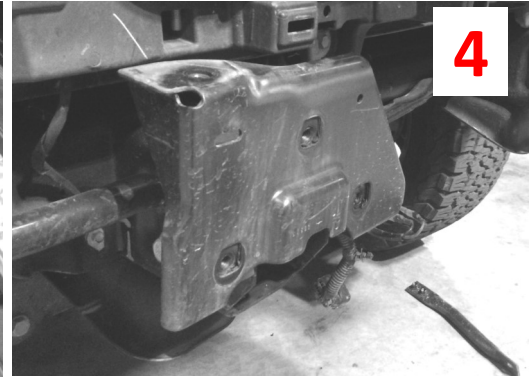
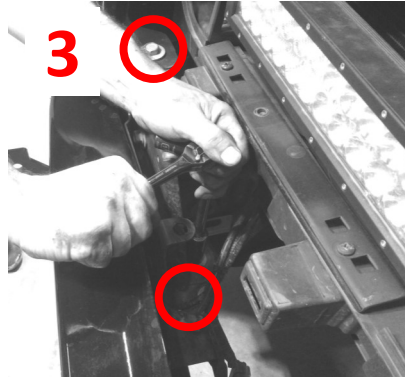
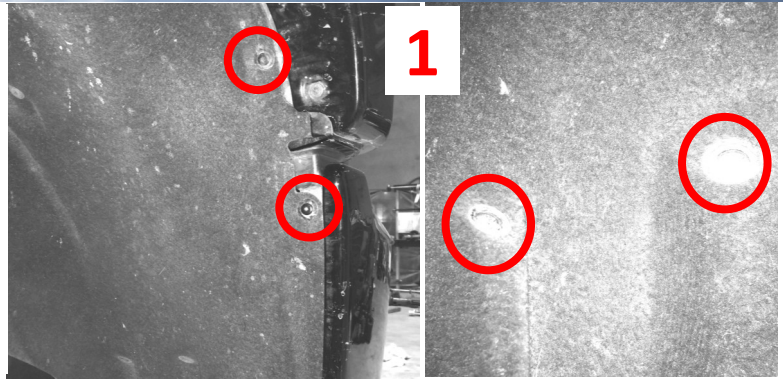
4 Hex Drive Button Socket Cap Screw

4 7/16"-14 x 1-1/4" Hex Drive Socket Cap Screw

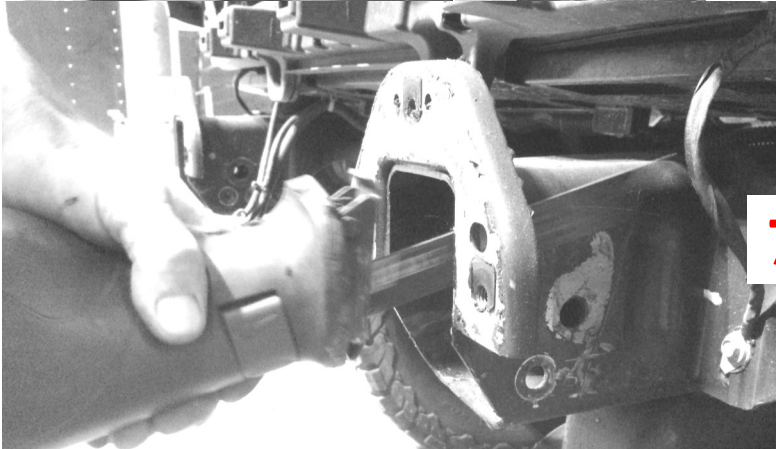
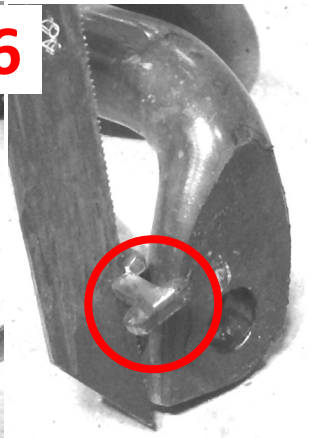
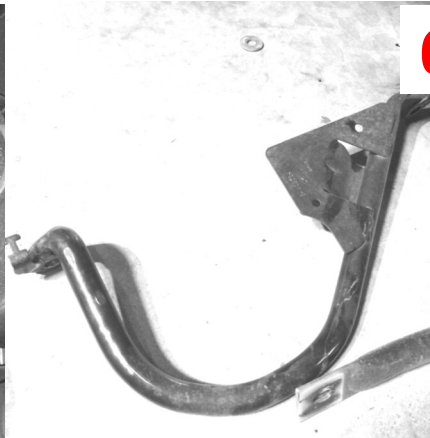
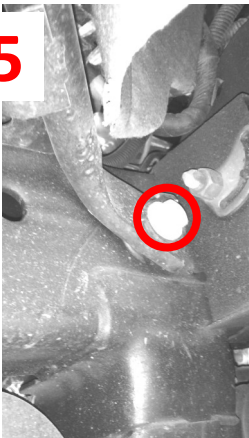
4 3/8"-16 x 1-1/4" Hex Drive Socket Cap Screw

4 #10-24 Lock washer K-Lock Nut

- 1 Remove the fender well screws
- 2 Pulling from the bottom, pop away the grill slowly. It is held in by clips
- 3 Remove the bumper bolts so the bumper can slide forward (Both sides)
- 4 Remove frame plate to gain access to the tow hooks



- 5 Remove the bumper support bar. These will be used for leverage later.
- 6 Then remove the body guard mount as shown. Once that is completed cut the tab off as shown



- 7 Remove the factory tow hooks by removing the two bolts on either side. Cut through the welds on the frame horn using a sawzall.





- 8** Re-attach the bumper support bars to the frame horn and pull up to break the top weld free as shown.
- 9** Use a grinder to smooth out the welds from the frame horn. Once this is completed use a good rust inhibiting spray paint to touch up the area.



- 10** Once the rust inhibiting spray paint has dried properly fit up the mounting bracket to the frame using included hardware. Also this is when you will reattach the body guard mount.
- 11** Fit up the single bolt tabs through the bumper and affix using supplied retainer clips. These are installed by pushing on with a deep socket while holding the back.
- 12** Using a lift table, engine hoist or a couple friends, carefully line up the bumper with the brackets.
- 13** Insert double bolt plates through the bracket slots, then install a washer / lock washer and nut on bumper side.
- 14** Check in/out and side to side adjustments as well as headlight reveal.
- 15** Once satisfied with fitment, fully tighten bumper to brackets.



- 16 On the inside of the bracket there is a pilot hole. Using a step bit, drill through the bracket and frame and attach provided hardware. Especially if this is a winch bumper.
- 17 Once the hole has been drilled out attach the supplied hardware as shown. This will further secure the bracket for added strength while winching or in the event of a collision.



FINISHED

