

**WINCH**



**NON-WINCH**



# INSTALL INSTRUCTIONS

## SAHARA FRONT BUMPER

Product Range : SA315XX

Application : 2015 + CHEVY / GMC 2500,3500

## I WARNING

Read the instructions completely before beginning installation. Before tightening bolts, drilling or cutting where required, check to make sure there are no obstructions such as brake, fuel or electrical lines which may be damaged. Also keep in mind this is an after-market product and MAY require minor shimming and/or trimming, reaming, etc. for proper fit. Road Armor is not responsible for any damages to vehicle.

## ⓘ IMPORTANT NOTICE

- Be sure to inspect and test fit your product to ensure proper fitment before having it coated, painted, bed lined, etc.
- Road Armor will not be responsible for the cost of coating your unit if any problems with fit or finish are not noted and addressed beforehand.

## SAFETY FIRST!

- FOLLOW ALL INSTRUCTIONS, YOUR SAFETY AND THE SAFETY OF OTHERS IS MOST IMPORTANT.
- WEAR APPROPRIATE EYE PROTECTION AND EXERCISE CAUTION WHEN DRILLING / CUTTING

## REQUIRED TOOLS

SAE & Metric Sockets and Wrenches

Black Spray Paint

Adjustable Pliers

Tape Measure

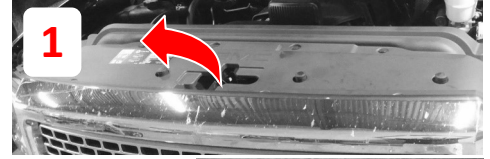
Cutoff Wheel or Die Grinder

## INCLUDED HARDWARE

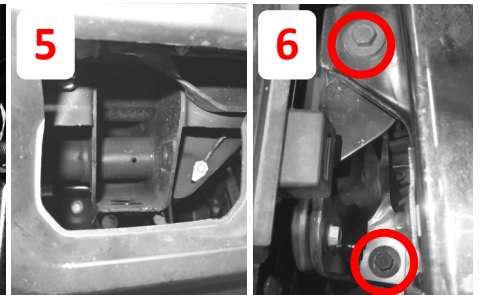
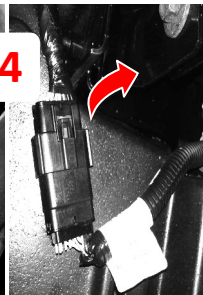
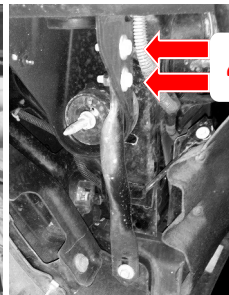
- 6 1.5" SINGLE BOLT TAB (ZINC)
- 18 1/2" Flat Washer
- 16 1/2" Split Lock Washer
- 16 1/2"-13 Grade 8 Hex Nut
- 2 1/2"- 4 1/2" Grade 8 Bolt
- 2 #3 Double Bolt Plates
- 2 #4 Double Bolt Plates
- 4 Bolt Retainer
- 1 Winch Bolt Kit
- 4 #10 Stainless Bolts and Nuts



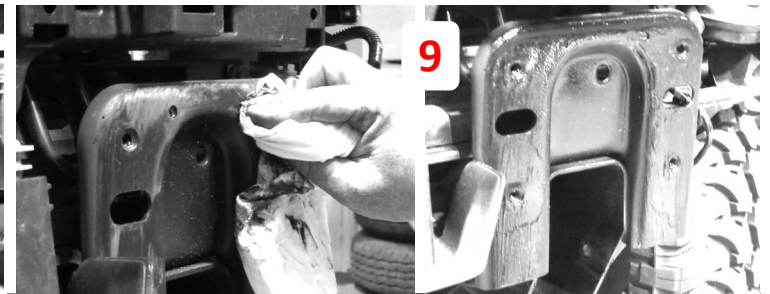
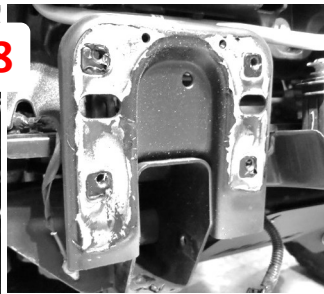
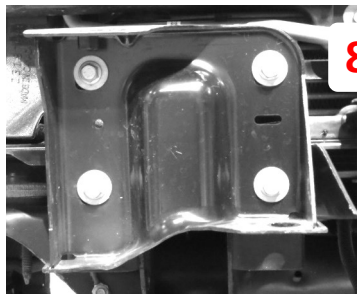
- 1 Open hood and remove dust cover above grill
- 2 Remove four bolts along top of grill
- 3 Pulling from the bottom, pop away the grill slowly



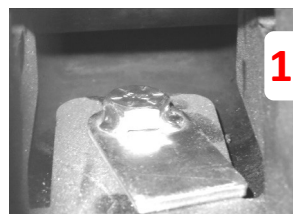
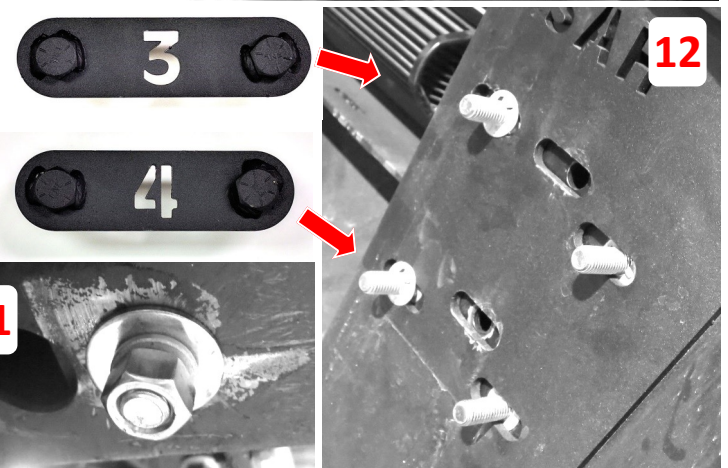
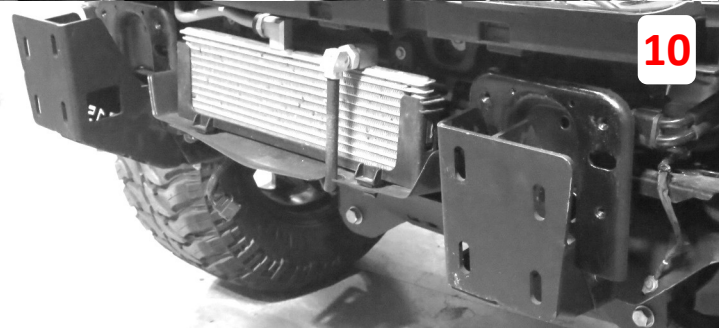
- 4 Remove stiffeners both sides and unplug harness
- 5 Remove tow hooks both sides
- 6 Remove bumper bolts 4 total and pull off bumper



7 Once factory bumper has been removed you may now reinstall the grill and dust cover.

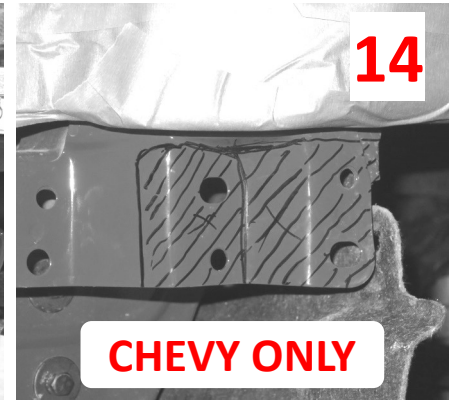


- 8 Remove OEM bumper brackets.
- 9 Smear coating to cover raw metal or paint.
- 10 Slide brackets into frame as shown
- 11 Install single bolt tab through bottom of inserted bracket
- 12 Insert the #3 double bolt plate through top slots and affix using 1 retainer clip. Do the same for #4 through the bottom slots as shown.
- 13 Peel off protective layer from brushed stainless logo letters then proudly install using supplied #10 stainless hardware.





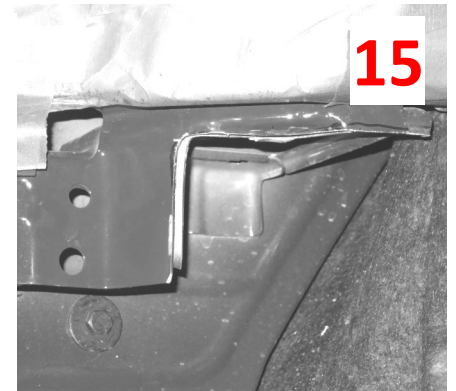
**13**



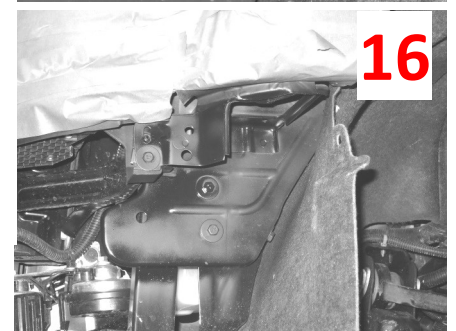
**14**

**CHEVY ONLY**

- 13** There are two T15 screws holding on the plastic trim piece below fender and headlight. Remove this part to reveal the sheet metal below.
- 14** The area marked here collides with the bumper on the Chevrolet, GMC owners, skip to 16. Using painter's or masking tape, mask off the headlight and fender to protect from scratching.
- 15** Using a cut off wheel, trim away this area of sheet metal.
- 16** To prevent rust, use a good rust inhibiting spray paint to touch up the now exposed steel, also the area behind to hide the body color which can now be seen through your new Sahara bumper.
- 17** Lift bumper in to place aligning the retained bolts with the bracket slots. We suggest using a lift table or pallet hoist, but this is also easily achieved with a helping hand.
- 18** Check in/out and side to side adjustments as well as headlight reveal.
- 19** Once satisfied with fitment, fully tighten bumper to brackets.



**15**

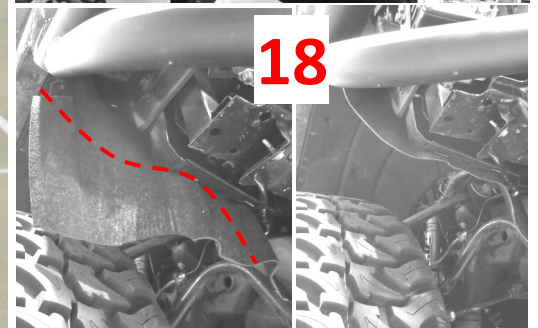


**16**

**FINISHED**



**17**



**18**