

Preparation:

- Disconnect the negative battery terminal. Park the vehicle on level ground and set the emergency brake.
- We recommend reading through the installation instructions in whole before performing the work.
- When button head bolts are being used, install the supplied washer on the nut side. Then, hold the bolt stationary and only turn the nut to tighten. Do not turn the bolt to tighten hardware assembly, unless otherwise noted.
- Estimated Installation Time: **2 Hours for OEM Removal/Bumper Installation**

1 Additional Hour to Wire Lights

****This installation requires 2 people for best results****

****Labor Rates are based on a vehicle with no pre-existing damage. Wiring labor is based on a standard wiring procedure with light switches installed in an easily accessible location. Custom light triggering or switch mounting location will result in a greater labor charge.****

You will need the following tools:

- | | | |
|------------------------|-------------------------|--------------------------|
| - Ratchet | - 9/16" Socket & Wrench | - 13mm Socket |
| - 15mm Socket & Wrench | - 18mm Socket | - Long Ratchet Extension |
| - 19mm wrench | - Allen head 5/16 | - 1 1/8 Socket & Wrench |

Included in Kit:

- | | |
|--|--------------------------------------|
| 4 - Hex Head Bolts (3/8"-16x 1 1/2") | 2 - Plastic Snap-In Nuts (1/4") |
| 4 - Extra Long Extended U nuts (3/8"-16) | 2 - Hex Head Screw (1/4"-24 x 3/4") |
| 4 - Type A Washers (3/8") | 2 - Nylon Lock Nut (3/4-10") |
| 2 - Black Oxide Button Head Bolts (1/2"- 13x 1 1/2") | 2 - Flat Washer (3/4") |
| 2 - Black Oxide Nylon Lock Nut (1/2"-13) | 2 - Hex Head Bolts (3/4"-10x 1 1/2") |
| 2 - Black Oxide Flat Washers (1/2"-24 x 1 1/2") | 8 - Black Oxide Flat Washers (1/4") |
| 4 -Black Oxide Nylon Lock Nut (1/4"- 20") | 2 - Self Tapping Screws (12-1) |
| 4 - Black Oxide Button Head Bolts (1/4 -20 x 1") | |

Installation:

1. Unplug the main bumper harness connectors located on both the driver and passenger side of the vehicle along the frame rail. There are 2 connectors in total located under the rear fenders. (Fig A)

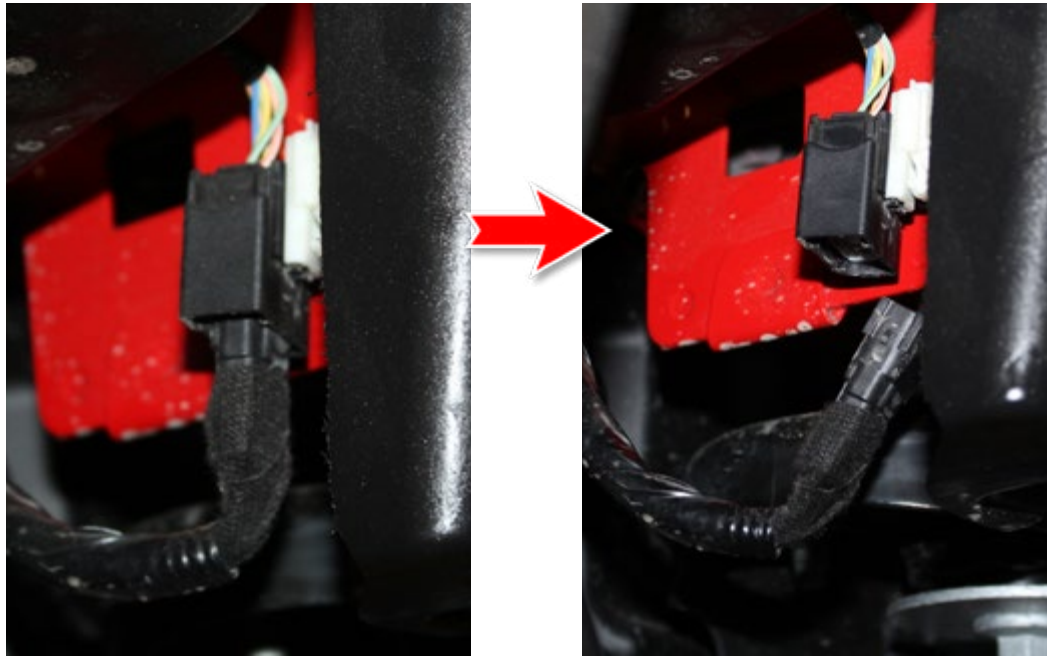


Fig A

2. Remove the 3 bolts with a 15mm wrench which will be found on each end of the bumper for a total of 6 bolts. (Fig B)



Fig B

3. There are 2 bolts which are 15mm that are located behind the bumper towards the inside of the frame. After those 2 bolts have been removed the bumper can be pulled off. (Fig C)



Fig C

4. After the bumper is removed, take off the wiring harness by disconnecting the sensor plugs and License plate light. (Fig D)



Fig D

5. Squeeze the license plate light tabs together and the light will come out. The license plate light has a tab that needs to be grind down for the ADD bumper. (Fig E) **(There are 2 tabs on each side of the license plate light You will need to grind down the tab that faces the ADD bumper).**

Fig E

Grind tab on the opposite side facing bumper



6. Take off the sensor bezels from the stock OEM bumper by squeezing the black part and push out to pop them out then remove the white plastic cover to get them ready to put on the ADD bumper. (Fig F)

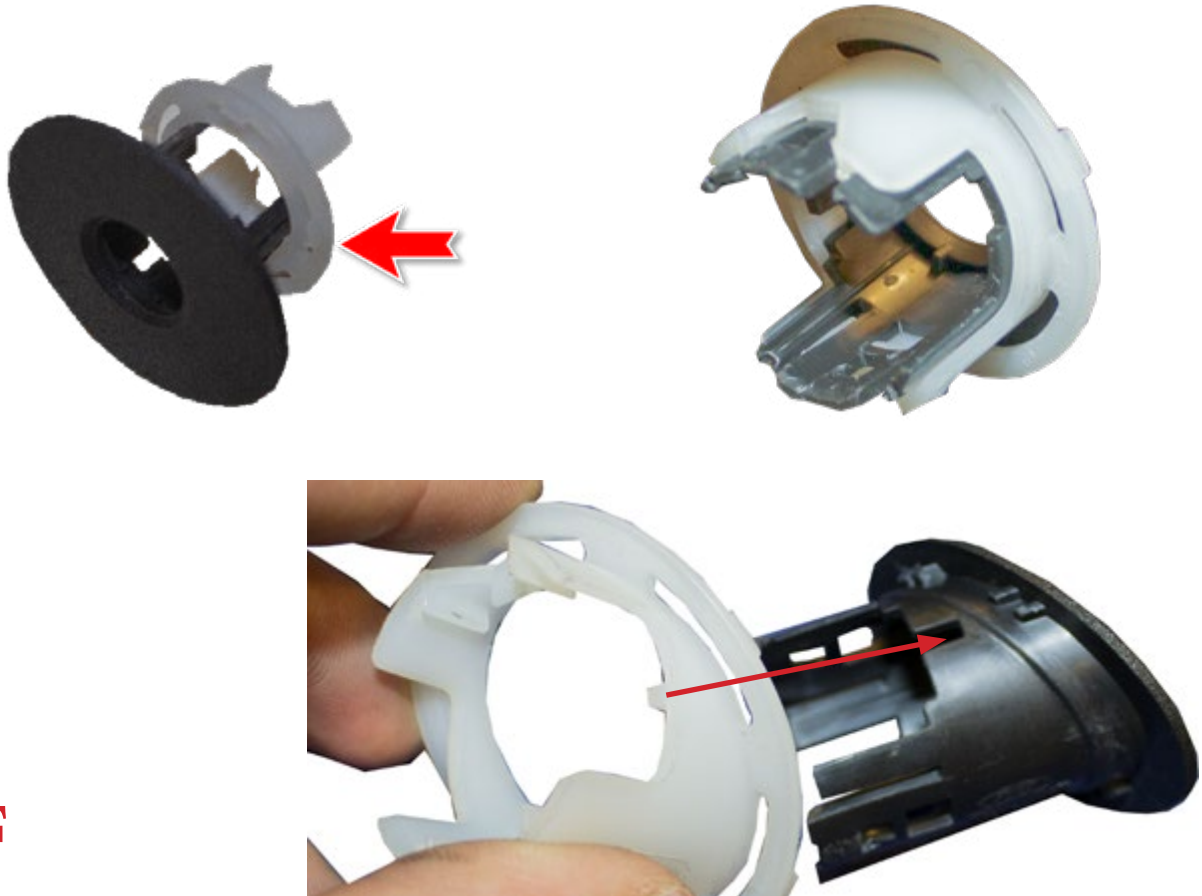


Fig F

For Plastic Bumper Sensor Bezels :

7. After the sensor bezels have been removed from the OEM bumper install them on the ADD bumper by inserting the black bezel part through the outside of the bumper, then slide the white bezel part on through the inside. (Fig G)



Fig G

For Steel Bumper Sensor Bezels:

8. All the sensors will be pointed upwards just like OEM when transferred to the ADD bumper. The inner sensor bezels can go on to the ADD bumper in the same position and orientation as the OEM sensor bezels would go (Fig H). (**Outer sensor bezel marked ROR goes on the passenger side, the outer sensor bezel marked ROL will go on the driver side**)



All sensor bezels should be pointed up like OEM does

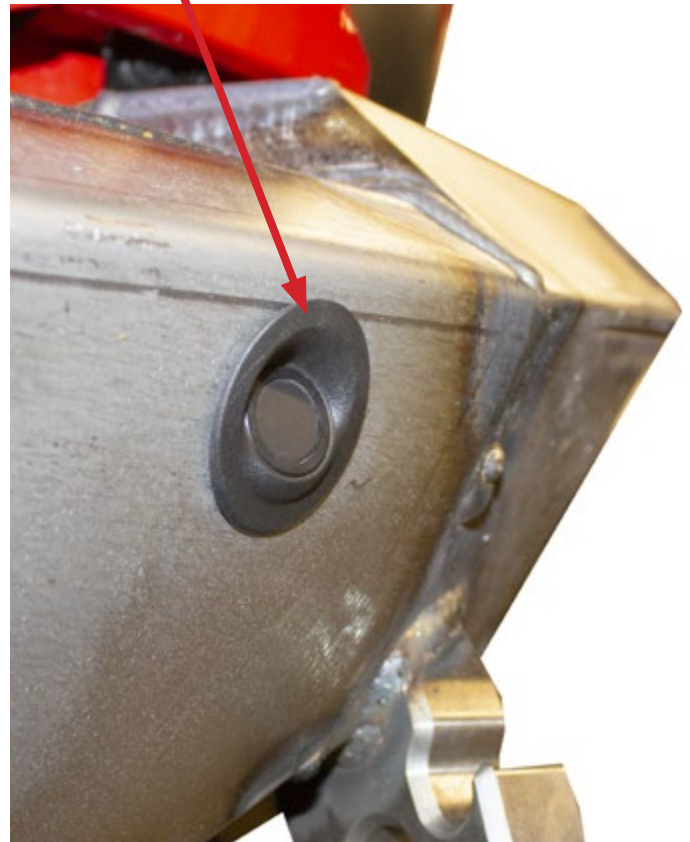


Fig H

9. After the Sensor bezels have been installed transfer the wiring harness that was take off the OEM bumper and install it on the ADD bumper. (Fig I)

Fig I



10. There is a bracket by the frame horn held in place by one bolt that needs to be removed shown below in. (Fig J)



Fig J

Remove bolt

11. After the wiring harness has been transferred over, zip tie the harness to secure it in place, than insert the 4 provide nut tabs on the ADD Rock Fighter bumper in these locations. (Fig K)

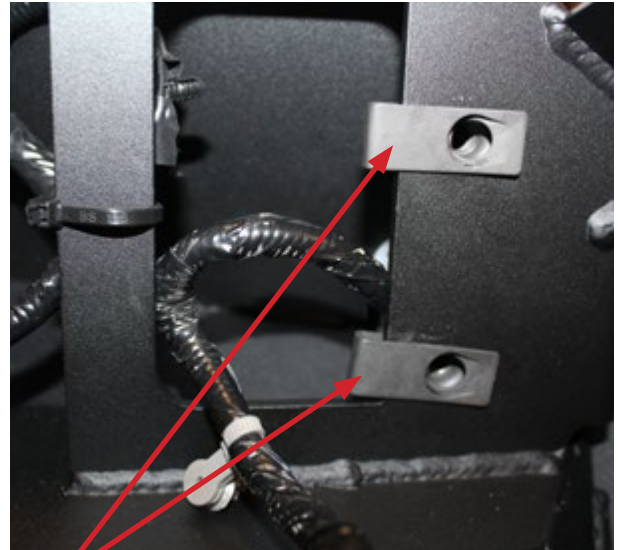
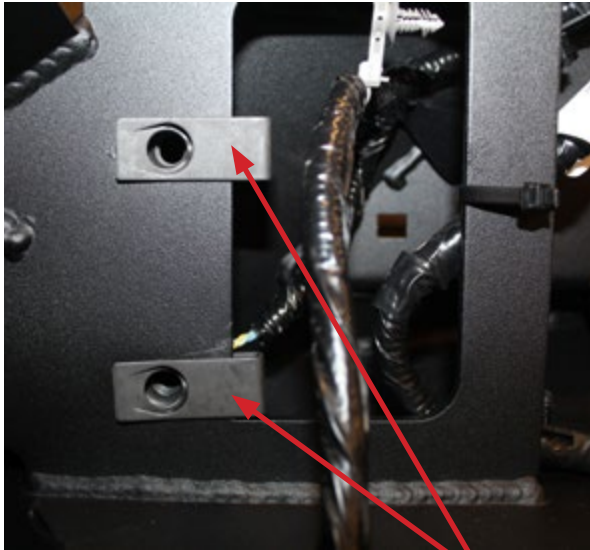


Fig K

2 on each side

12. Remove the 2 bolts in the frame of the bronco to install the bracket that will be used as a mounting point for the bumper, then after the bracket has been placed in the frame use the same bolts to attach the bracket to the frame. (Fig L)

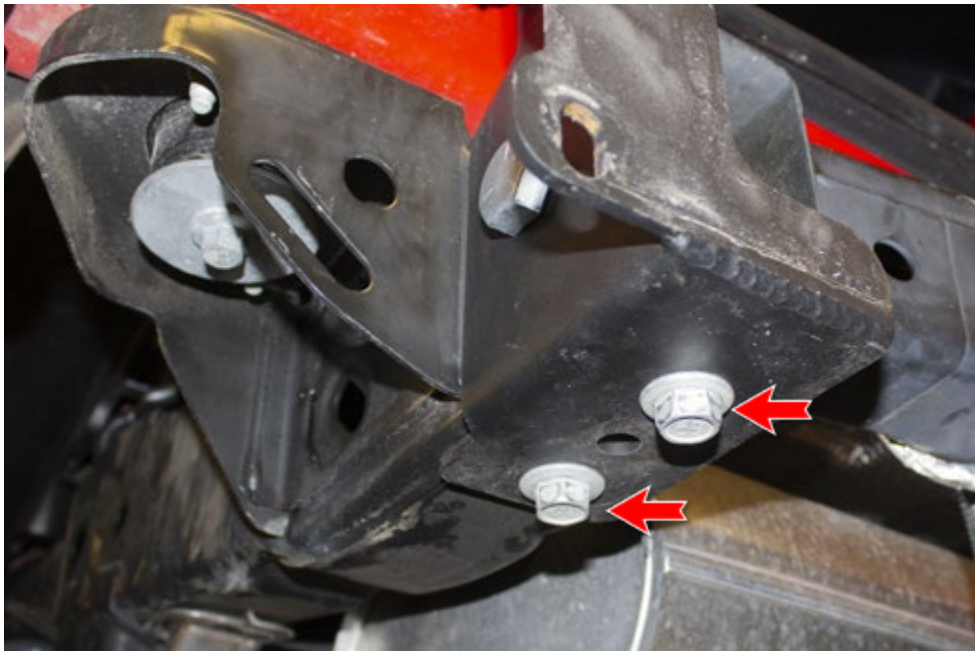


Fig L

13. There is a provided bolt that will go through the bracket into the frame as another securing point for the bracket. (Fig M)

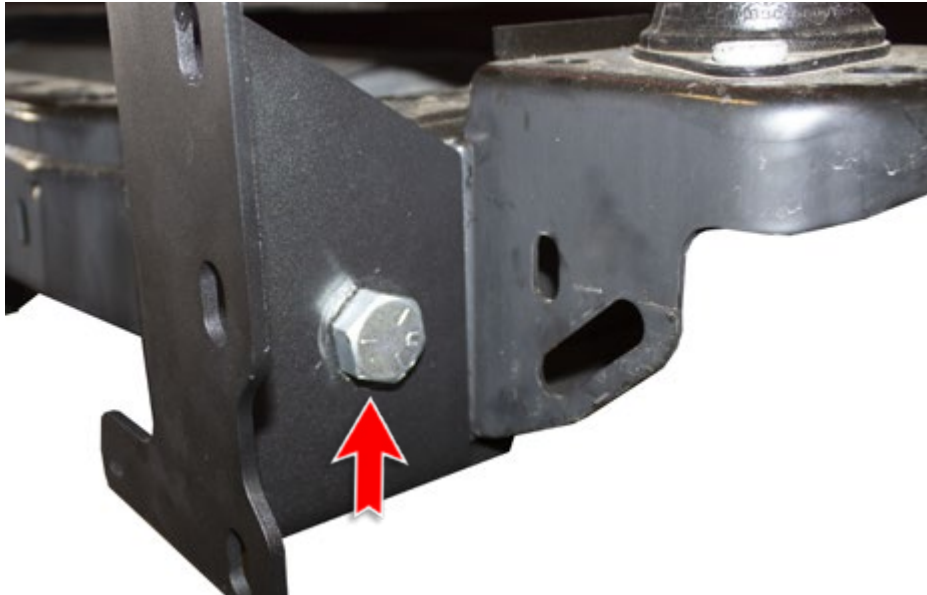


Fig M

14. Before installing the bumper, be sure to disconnect the wiring harness from the bronco off the mount. This will free up room for the wiring harness in the ADD bumper to reach the factory connector. (Fig N)



Disconnect

Fig N

15. Before installing bumper, make sure to install the license plate tabs for bolting the license plate to the ADD Rock Fighter bumper. (Fig O)

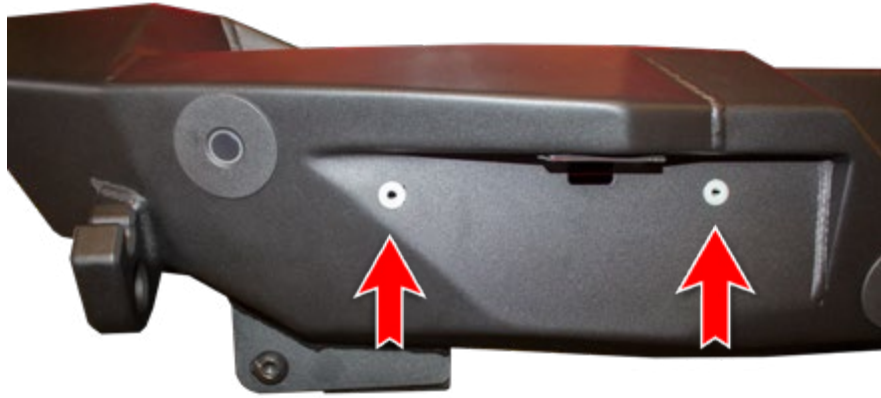


Fig O

16. Bolt on the bumper by using the 3 openings on each bracket that was provided in the kit on the side of the frame using the bracket installed in (Fig J) 2 bolts will screw into the nut tab the 3rd bolt is a button head. (Fig P)

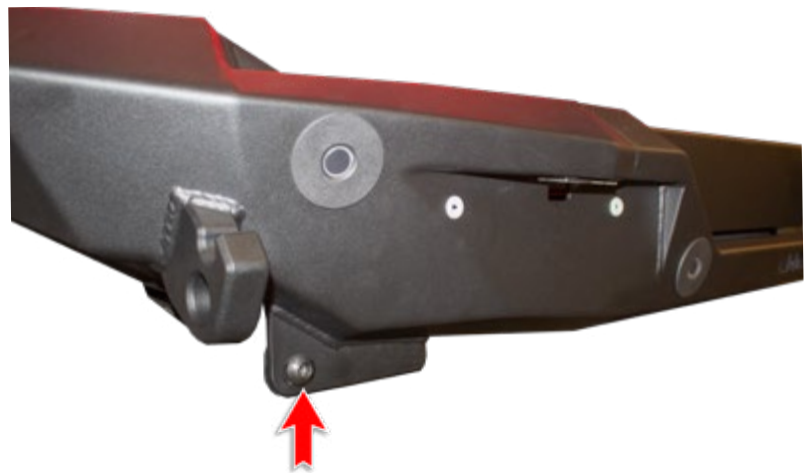
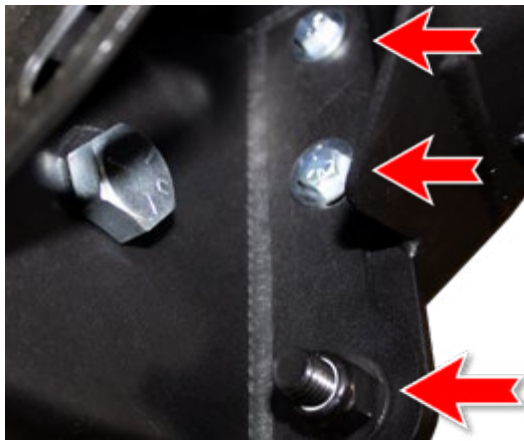


Fig P

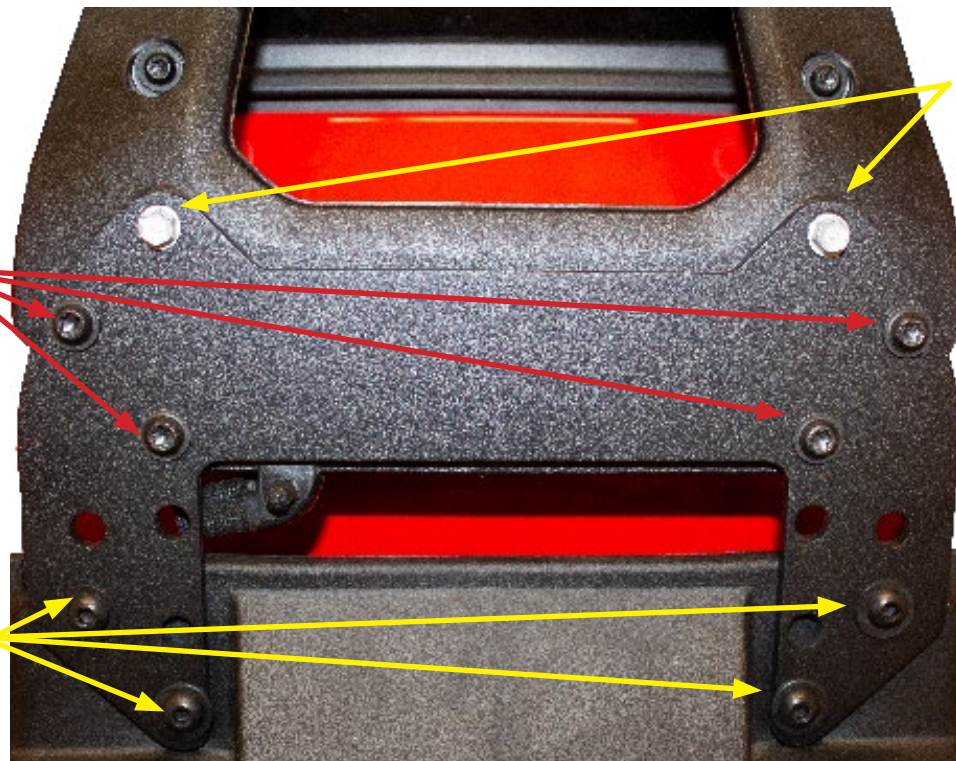
17. Remove the 4 bolts that connect the mount to the tire rack. (Fig Q)



**Remove OEM
x4 Screws**

Fig Q

18. Use the 4 provided button head bolts to bolt on the extended bracket to the mount, then use to 4 OEM screws to mount the bracket to the brake light bracket. Than use the 2 provided screws to mount the bracket to the third tail light . (Fig R)



**Provided
screws**

**OEM
screws**

**Provided
Hardware**

Fig R

19. Stand back and enjoy your new ADD Rock Fighter™ Rear Bumper.
20. Check and re-tighten, if needed, all mounting bolts after 100 miles and periodically thereafter.

