

Preparation:

- Disconnect the negative battery terminal. Park the vehicle on level ground and set the emergency brake.
- We recommend reading through the installation instructions in whole before performing the work.
- When button head bolts are being used, install the supplied washer on the nut side. Then, hold the bolt stationary and only turn the nut to tighten. Do not turn the bolt to tighten hardware assembly, unless otherwise noted.
- Estimated Installation Time: **2 Hours for OEM Removal/Bumper Installation**

1.5 Additional Hour to Wire Lights

*****This installation requires 2 people for best results*****

*****Labor Rates are based on a vehicle with no pre-existing damage. Wiring labor is based on a standard wiring procedure with light switches installed in an easily accessible location. Custom light triggering or switch mounting location will result in a greater labor charge.*****

You will need the following tools:

- | | | |
|----------------|---------------|-----------------------------|
| - Ratchet | - 13mm Socket | - 7/32" Allen Wrench/Socket |
| - 9/16" Socket | - Grinder | - Black Paint |

Included in Kit:

- | | |
|--|---|
| 2 - Hex Head Bolts (3/8"-16 x 1 1/2") | 2 - Fender Washers (3/8") |
| 2 - U- Nuts (3/8"-16) | 2 - Black Button Head Bolts (3/8"-16 x 1") |
| 4 - Black Washers (3/8") | 2 - Black Nylon Lock Nuts (3/8"-16) |
| 6 - Parking Sensor Plugs & Grommets | |

Removal:

1. Remove your license plate.
2. Remove your spare tire lock.
3. From underneath the vehicle, unplug your trailer plug. Then, release it from the bumper by squeezing in the two metal tabs on the back side. (Fig A)



Fig A

4. From underneath the vehicle, unplug the license plate light and remove the license plate housings by squeezing in the tabs on the back side. (Fig B)

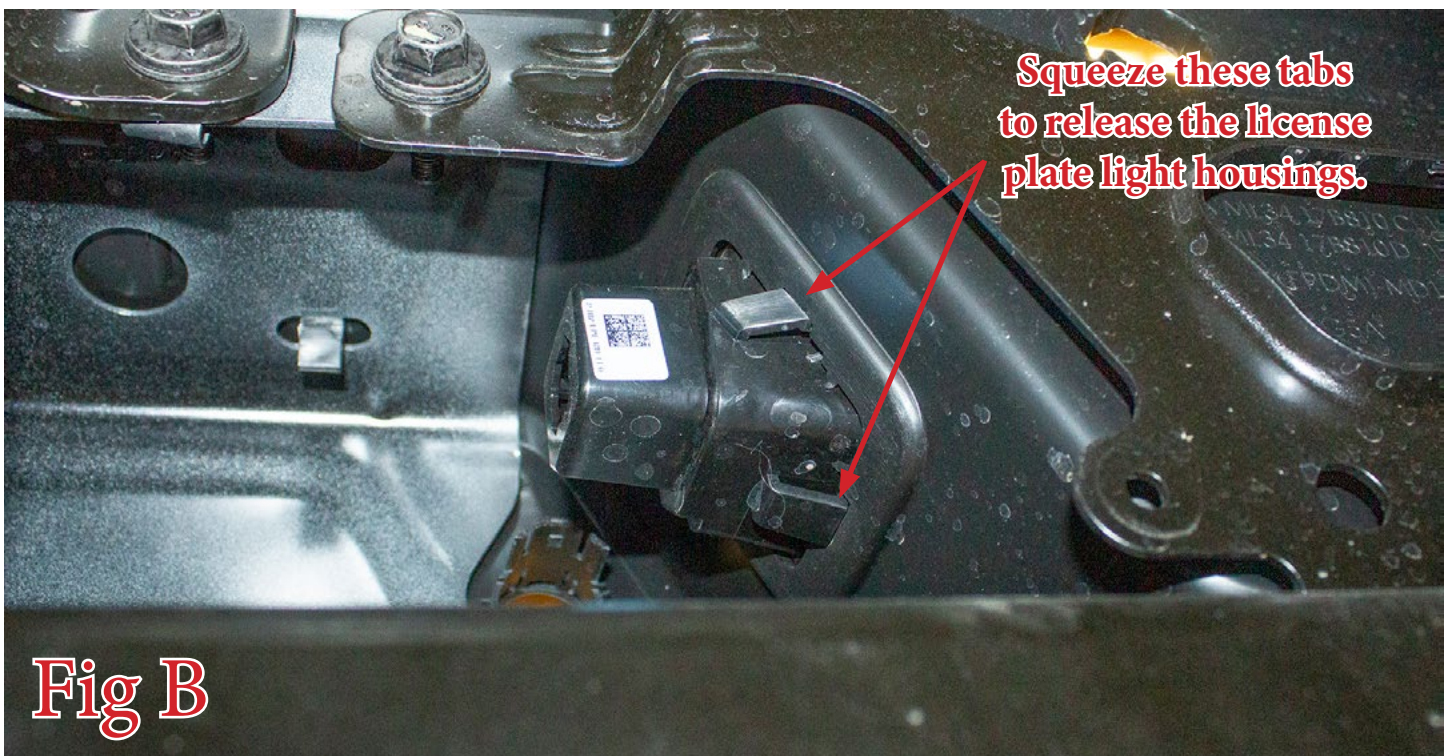
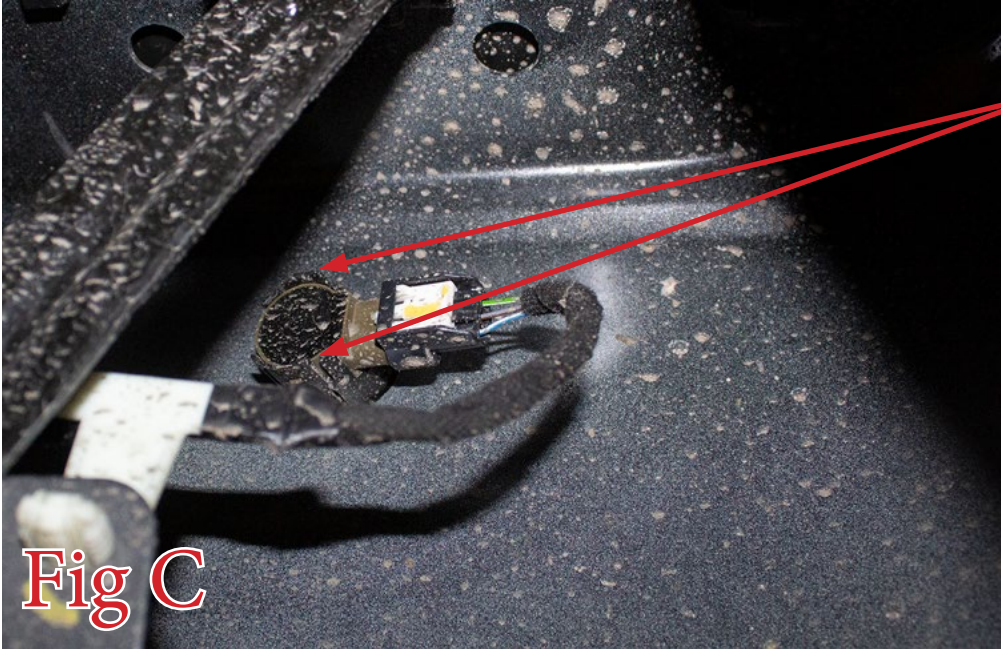


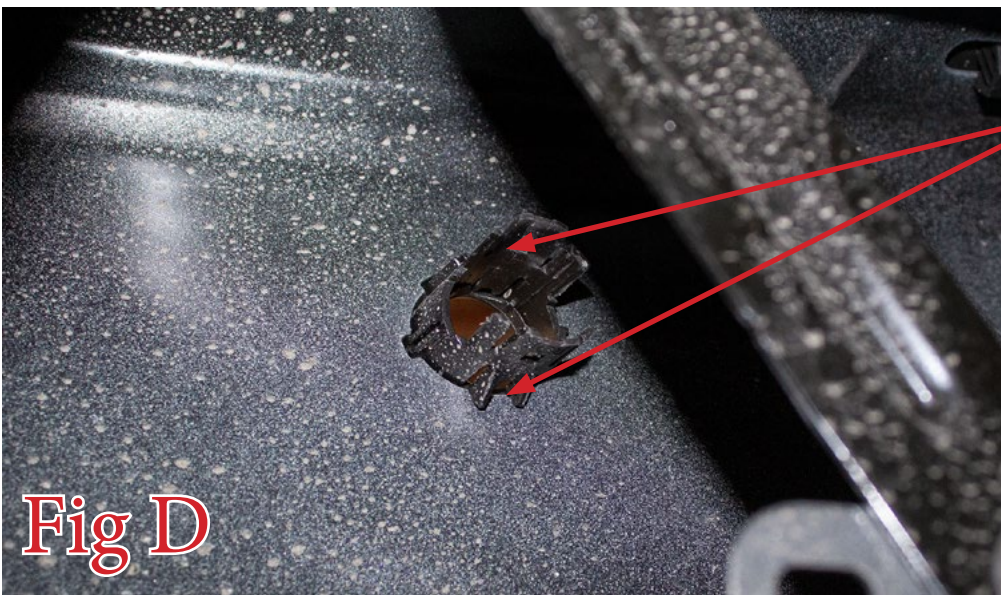
Fig B

5. Remove the parking sensors from their mounting rings. Do this by spreading the two tabs on the back side of the rings. Then, leave the parking sensors plugged in and attached to the wire harness. **Make sure to keep track of what orientation they are installed so that you can reinstall them onto your new bumper in the same orientation.** (Fig C)



Spread these two tabs to release the parking sensor.

6. Remove the parking sensor mounting rings by pressing in the two tabs along the base of the back side of the rings. (Fig D) **Make sure to keep track of what orientation they are installed so that you can reinstall them onto your new bumper in the same orientation.**

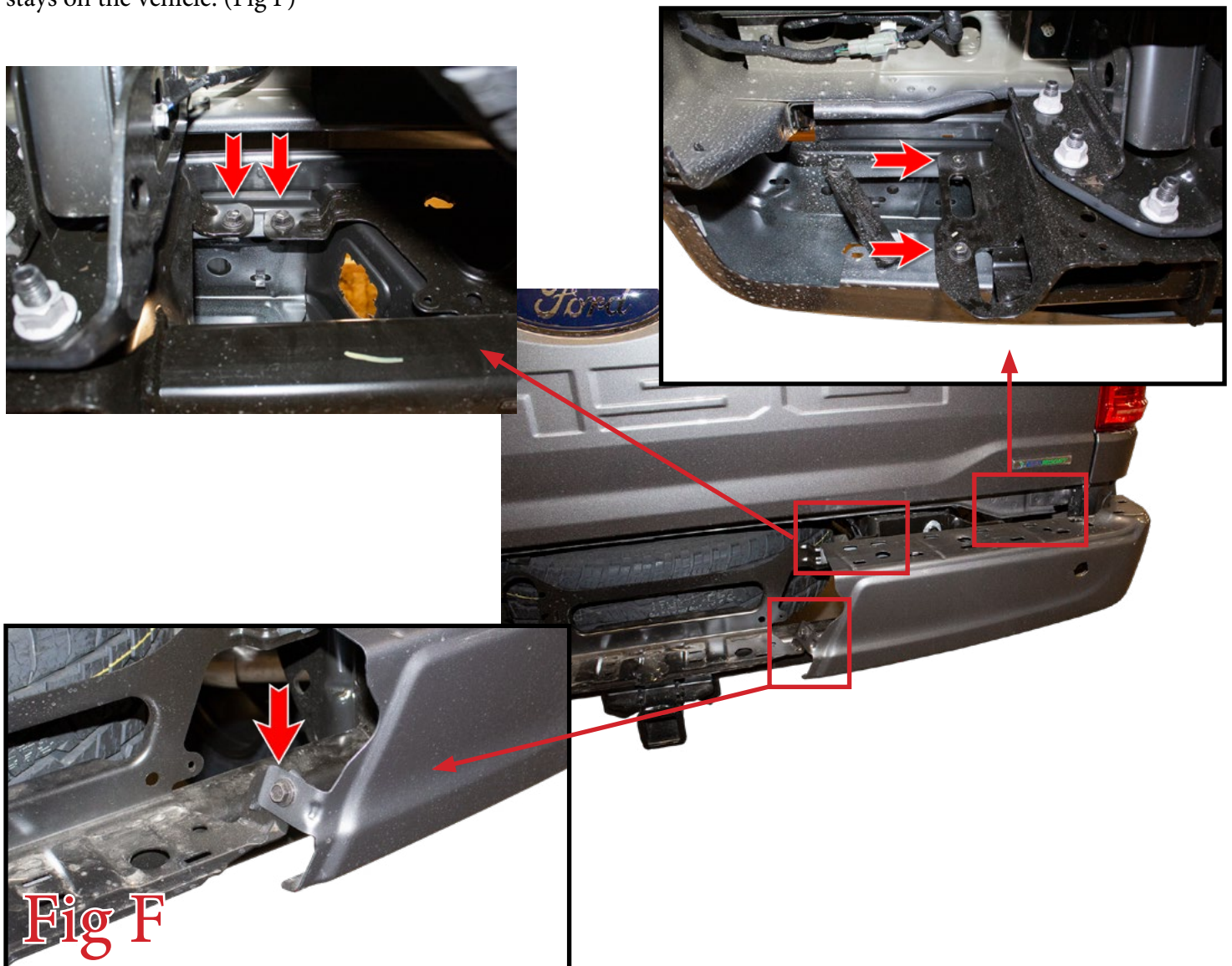


Squeeze these two tabs to release the parking sensor mounting rings.

7. Pull the top plastic cover off the bumper. There are no tools required for this step, it simply pulls off by hand. (Fig E)

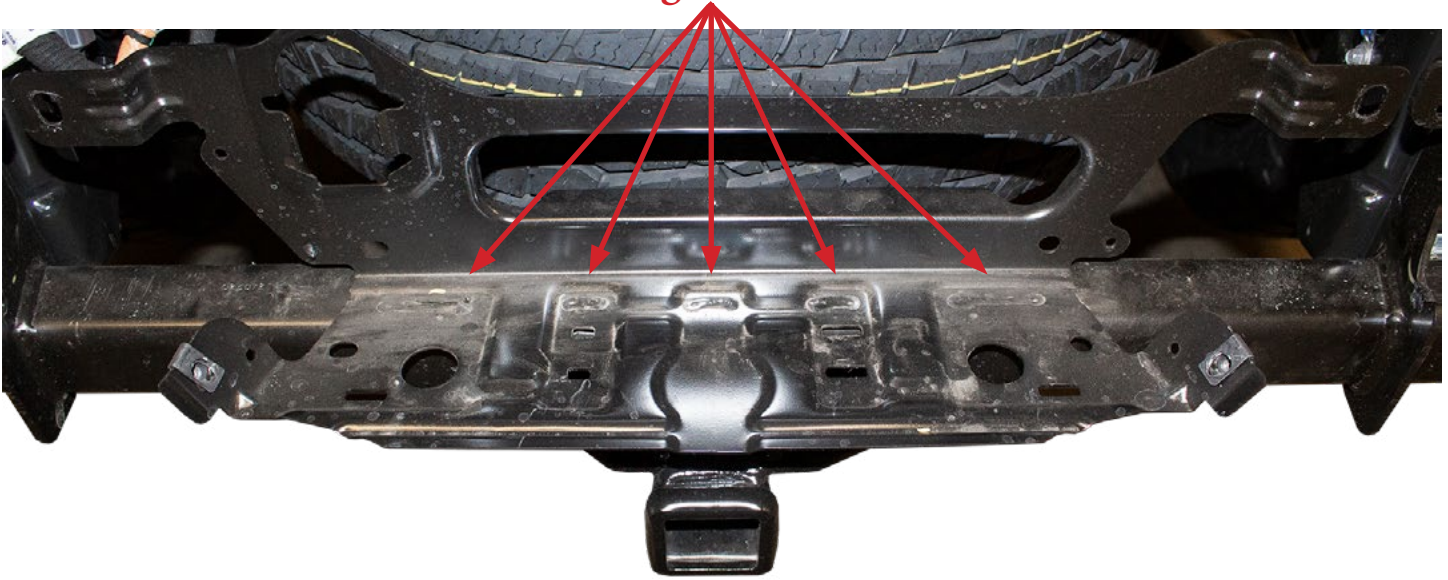


8. Using a 13mm Socket, remove the mounting bolts (5 per side) that hold the bumper side pods to the vehicle. Then, remove these pods. As you remove them, you will have to release some plastic clips so that the harness stays on the vehicle. (Fig F)



9. Remove the license plate bracket that is welded to the hitch tube. Do this by grinding through the five visible welds that connect that bracket to the tube. Once the bracket has been removed, weld the tube smooth and paint it with black paint. (Fig G)

Grind through these five welds.



Grind the area smooth.



Paint over the bare metal.



Fig G

Installation:

10. Install the spare tire lock into its hole by pressing it into place and turning it with your vehicle's key. (Fig H)



11. Install the trailer plug into its precut hole. If it does not click into place, you can take a screwdriver, or something similar, and spread the metal tabs on the back side of the trailer plug. (Fig I)



12. Install the license plate light housings. Push them into place into their precut holes. Make sure to install them in the same position/orientation as they came off the OEM bumper. If they do not click into place, you may have to file back the tabs on the back side of the housings to allow for the thicker material of the new bumper. (Fig J)

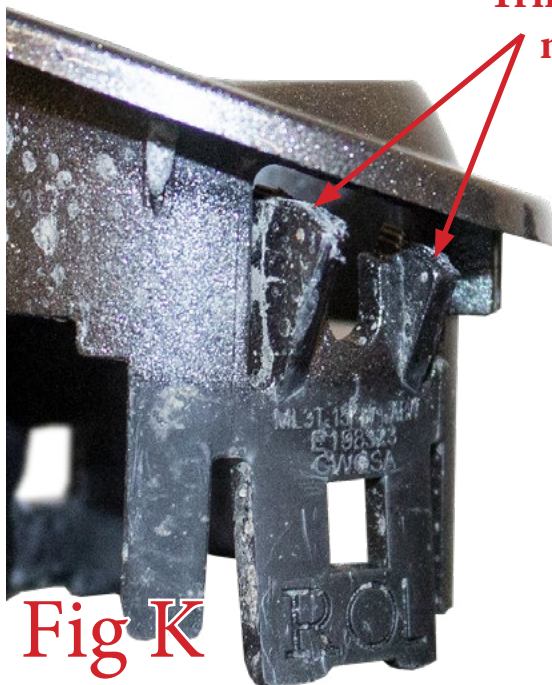
Before

After



13. Install the sensor mounting rings into the new bumper. Make sure to install these in the same position/orientation as they came off the OEM bumper. You may have to trim the mounting tabs on these to accommodate for the thicker material of the new bumper. (Fig K) **If your vehicle does not have parking sensors, install the supplied Rubber Grommets/Plugs into the sensor holes in the bumper. If your vehicle has four parking sensors, install the supplied Rubber Grommets/Plugs into the outer sensor holes in the bumper, using the four inner holes for your truck's parking sensors.**

Trim this area if necessary.



14. If you have any lights to install on your bumper, do so now. Follow the light manufacturer's guide for mounting/wiring information. (Fig L)



Fig L

15. Install the supplied U-Nuts (1 per side) into the upper mounting holes on each side of your bumper as shown in (Fig M).

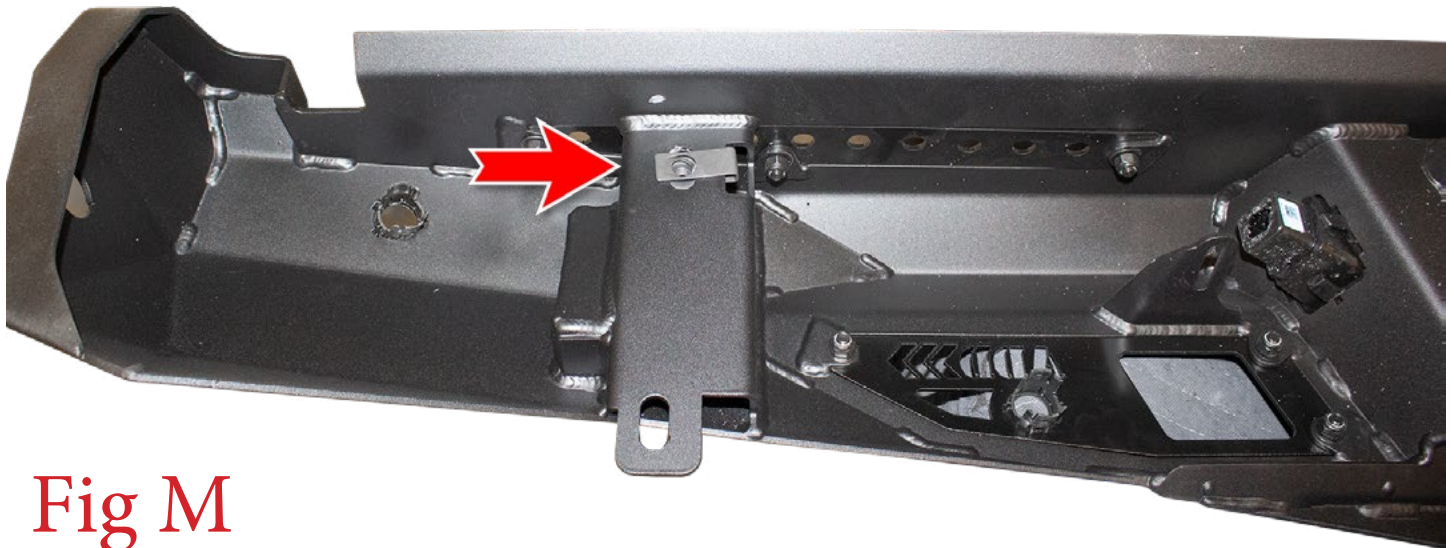


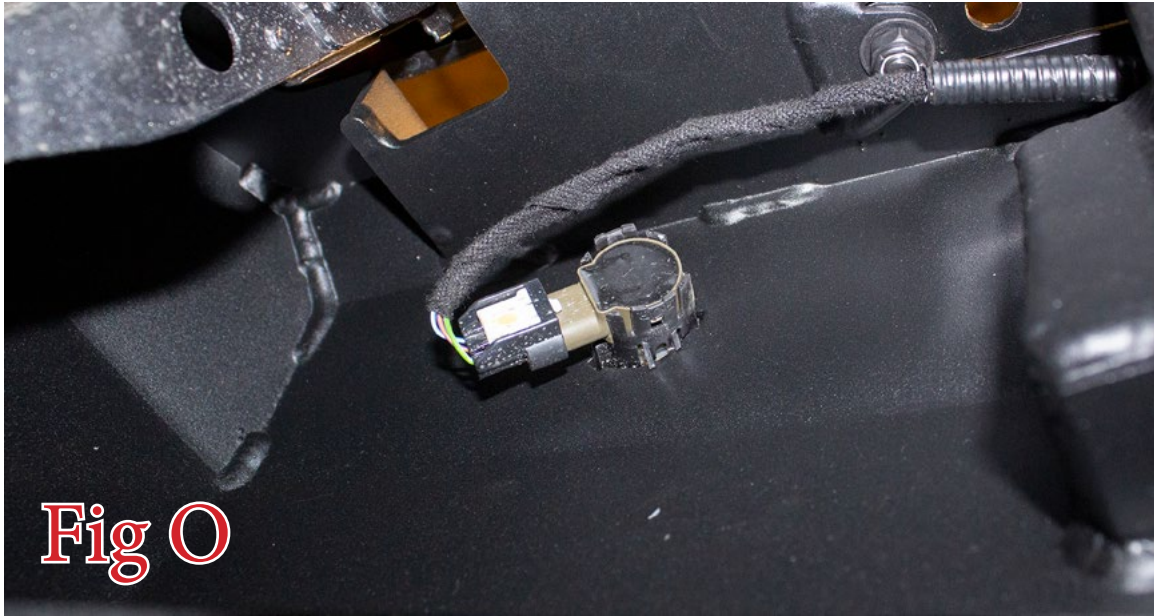
Fig M

16. Set the bumper in place on the vehicle. Then, loosely install the supplied 3/8" Black Button Head Bolts (1 per side), 3/8" Black Washers (2 per side) and 3/8" Black Lock Nuts (1 per side). Then, install the supplied 3/8" Hex Head Bolts (1 per side) and 3/8" Fender Washers (1 per side) from the back side of the frame and into the U-Nuts that were previously installed on the bumper. Leave these loose for now. (Fig N)



Fig N

17. Align the bumper so it is centered left to right and straight in relation to the tailgate. Then, tighten the mounting bolts to 30 foot pounds.
18. Install the parking sensors into the back side of their mounting rings. **Install the outer parking sensors in the same position/orientation as they came off the OEM bumper. Install the inner sensors rotate 180 degrees from their original orientation on the OEM bumper.** (Fig O)



19. Install the license plate lights back into their housings.
20. Stand back and enjoy your new ADD Stealth Fighter™ Rear Bumper.
21. Check and re-tighten, if needed, all mounting bolts after 100 miles and periodically thereafter.

