



1.877.287.8634

### INSTALLATION INSTRUCTIONS

**IMPORTANT NOTICE:** Be sure to inspect and test fit product before having it coated or painted. Ranch Hand will not be responsible for the cost of the coating if any problems with fit or finish are not noted and addressed beforehand.

## 2019-up DODGE RAM 2500/3500 GRILL GUARDS PART # GGD191BL1 & GGD191BL1C

1. Begin by trimming the plastic shield between the factory grille and bumper. This is where the top brackets will come out from behind the bumper. *(Photo is shown with the bumper off for clarity and location. You do not have to remove the bumper).*



2. If tow hooks are not present, cut out the plastic around the two locations where tow hooks would be *(see photo below)*. If present, remove the factory tow hooks to insert the bottom brackets. **Note: Some trimming to the plastic around the tow hook may be required.**



3. Remove the two factory bumper bolts and install the bottom brackets along with tow hooks if present. The brackets will be installed with the bend facing outwards. Note: The bumper bracket will spread out once the bolts are removed. When you try to put the bolts back on, they will seem to be short. If you decide to use the ½" x 4" bolts provided, you will need to drill out the holes in the frame first. *(Photo is of driver side)*

### ----- WARNING -----

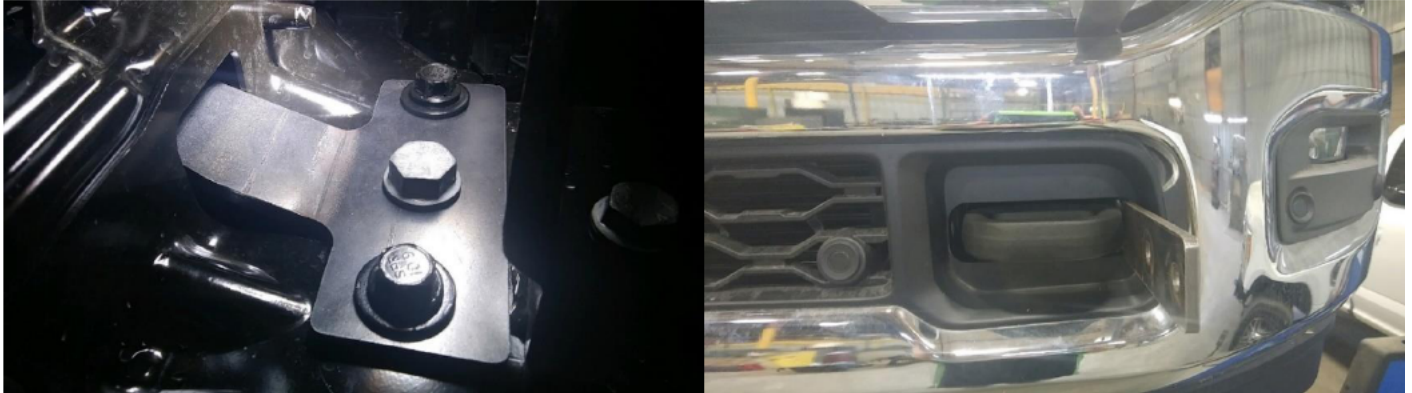
Special care should be exercised in the handling, storage and installation of Ranch Hand equipment. The actual weight of each piece of equipment will vary depending on style and model. The weight of the equipment is sufficient in volume to warrant special care, assistance and in some instances, the use of mechanical equipment during the transfer and installation of the equipment. Do not assume a position directly under the equipment during installation. Be sure the equipment has been connected and stabilized during installation to prevent falling or shifting of positions. Periodically check tightness of bolts to make sure they are tight, and unlikely to fail.  
Rev. 2022



1.877.287.8634

### **INSTALLATION INSTRUCTIONS**

**IMPORTANT NOTICE:** Be sure to inspect and test fit product before having it coated or painted. Ranch Hand will not be responsible for the cost of the coating if any problems with fit or finish are not noted and addressed beforehand.



4. Install top mounting bracket. The bracket will be installed from the bottom side of the truck. Remove the top nut of the bumper bracket. Slide the flat side of the top bracket through the opening of the bumper and grille. (1<sup>st</sup> Photo is shown from looking up from under the truck. 2<sup>nd</sup> photo (passenger side) shown with bumper off for location purposes.)



5. Install the grill guard to the bottom brackets. Use black ½" carriage bolts, washers and nuts. Level the grill guard and tighten nuts.



### **WARNING**

Special care should be exercised in the handling, storage and installation of Ranch Hand equipment. The actual weight of each piece of equipment will vary depending on style and model. The weight of the equipment is sufficient in volume to warrant special care, assistance and in some instances, the use of mechanical equipment during the transfer and installation of the equipment. Do not assume a position directly under the equipment during installation. Be sure the equipment has been connected and stabilized during installation to prevent falling or shifting of positions. Periodically check tightness of bolts to make sure they are tight, and unlikely to fail.  
Rev. 2022



1.877.287.8634

### **INSTALLATION INSTRUCTIONS**

**IMPORTANT NOTICE:** Be sure to inspect and test fit product before having it coated or painted. Ranch Hand will not be responsible for the cost of the coating if any problems with fit or finish are not noted and addressed beforehand.

6. Install the top mounting tabs (*It will be the "L" shaped brackets*). The mounting tab will bolt the top bracket to the upright. Use the black 3/8" carriage bolts and nuts.



**MAKE SURE ALL NUTS AND BOLTS ARE TIGHT!**

### ----- **WARNING** -----

Special care should be exercised in the handling, storage and installation of Ranch Hand equipment. The actual weight of each piece of equipment will vary depending on style and model. The weight of the equipment is sufficient in volume to warrant special care, assistance and in some instances, the use of mechanical equipment during the transfer and installation of the equipment. Do not assume a position directly under the equipment during installation. Be sure the equipment has been connected and stabilized during installation to prevent falling or shifting of positions. Periodically check tightness of bolts to make sure they are tight, and unlikely to fail.  
Rev. 2022