



1-877-287-8634

INSTALLATION INSTRUCTIONS

IMPORTANT NOTICE: Be sure to inspect and test fit product before having it coated or painted. Ranch Hand will not be responsible for the cost of the coating if any problems with fit or finish are not noted and addressed beforehand.

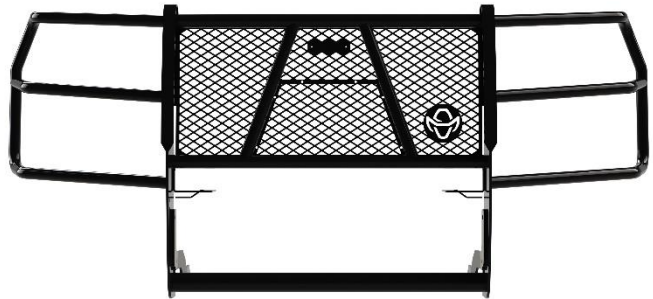
2020-24 CHEVY 2500HD/3500HD GRILL GUARD

PART # GGC241BL1

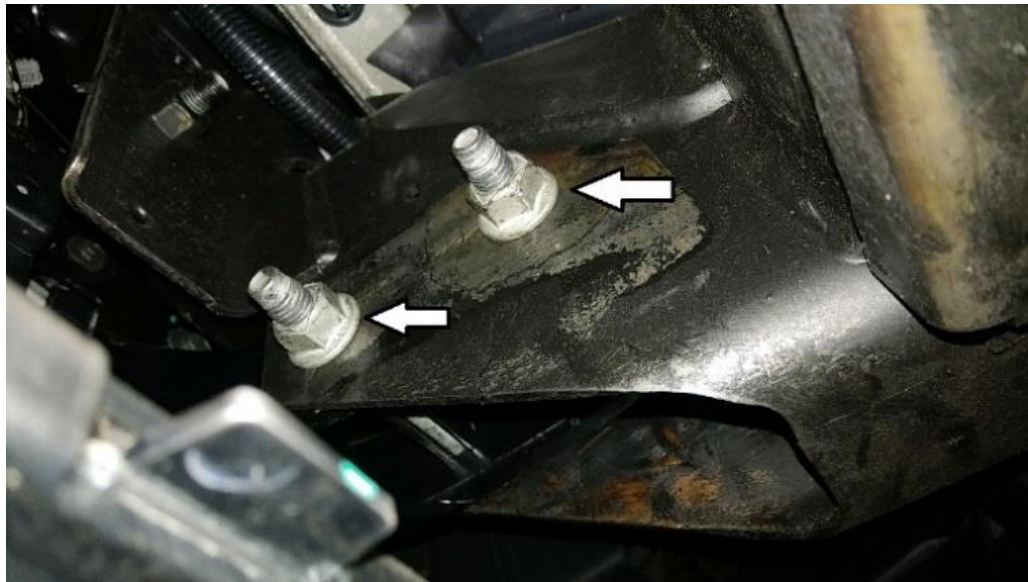
***** FOR VEHICLES WITH SENSORS, YOU WILL NEED TO USE PSG19HBL1 *****

TOOLS REQUIRED

- Ratchet and extension
- 9/32", 7/16", 3/4" sockets and/or wrenches
- 10, 14, 18mm sockets and/or wrenches
- 5/32" Allen wrench
- Flat and/or Phillips screwdriver
- Torx T-15
- Pry tool
- Utility knife



1. You will need to remove the tow hooks to install bottom brackets. Remove the tow hooks by removing the 18mm bolts and nuts.



2. Install the bottom brackets by sliding the brackets from the back. The bracket mounts to the outer side of the frame. Reinsert the tow hook and use the 5" x 1/2" bolts to install. If no tow hooks use 1 1/2" x 1/2" bolts. You may have to trim the plastic where the brackets come through the tow hook opening. **NOTE: YOU MAY HAVE TO TRIM SOME OF THE PASTIC AROUND THE TOW HOOK AREA.**

----- WARNING -----

Special care should be exercised in the handling, storage and installation of Ranch Hand equipment.

The actual weight of each piece of equipment will vary depending on style and model. The weight of the equipment is sufficient in volume to warrant special care, assistance and in some instances, the use of mechanical equipment during the transfer and installation of the equipment.

Do not assume a position directly under the equipment during installation. Be sure the equipment has been connected and stabilized during installation to prevent falling or shifting of positions.

Periodically check tightness of bolts to make sure they are tight, and unlikely to fail.

Rev. 2023



1-877-287-8634

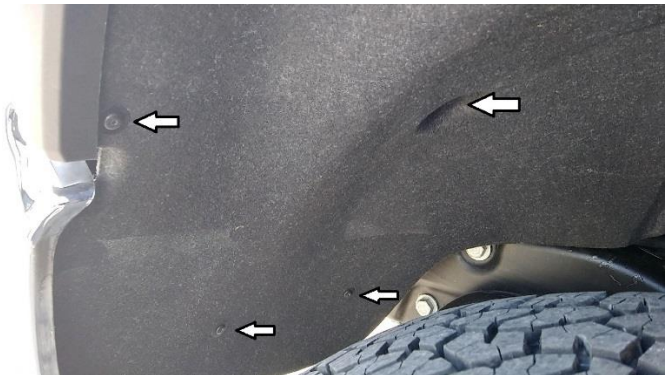
INSTALLATION INSTRUCTIONS

IMPORTANT NOTICE: Be sure to inspect and test fit product before having it coated or painted. Ranch Hand will not be responsible for the cost of the coating if any problems with fit or finish are not noted and addressed beforehand.



2020 – 2023 MODELS: (2024-up models skip to step 12)

3. To install the top brackets, you will need to remove the factory grille. You will need to remove the side panels first. Start by removing the inner fender well screws. This will allow to get to the back side of the plastic clips. There will also be a small screw in the corner that need to be removed before the side panel can be pulled off.



----- WARNING -----

Special care should be exercised in the handling, storage and installation of Ranch Hand equipment. The actual weight of each piece of equipment will vary depending on style and model. The weight of the equipment is sufficient in volume to warrant special care, assistance and in some instances, the use of mechanical equipment during the transfer and installation of the equipment. Do not assume a position directly under the equipment during installation. Be sure the equipment has been connected and stabilized during installation to prevent falling or shifting of positions.

Periodically check tightness of bolts to make sure they are tight, and unlikely to fail.

Rev. 2023



1-877-287-8634

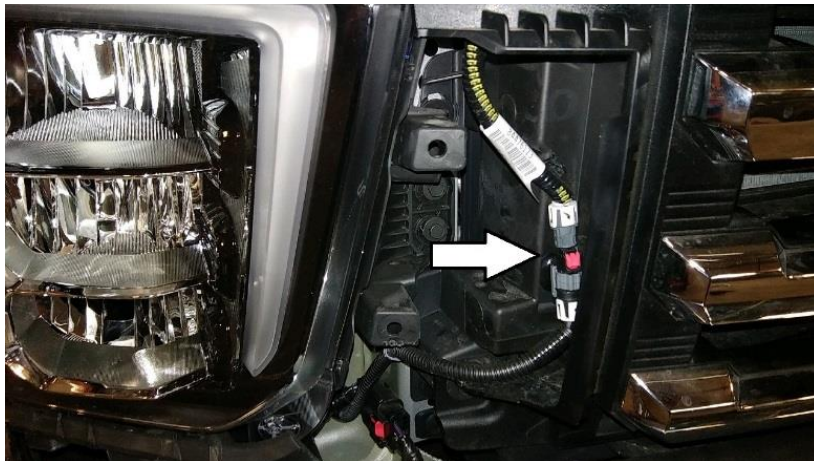
INSTALLATION INSTRUCTIONS

IMPORTANT NOTICE: Be sure to inspect and test fit product before having it coated or painted. Ranch Hand will not be responsible for the cost of the coating if any problems with fit or finish are not noted and addressed beforehand.

4. Remove the factory grille. Open the hood and remove the hood release latch by removing two T15 screws. Remove the ten plastic clips holding the plastic shield located above the grille.



5. If vehicle is installed with a front camera, unhook the connector. The grille can then be removed by remove four 10mm bolts on top and four 10mm (two on each side) from the sides.



6. Remove the two 14mm bolts located on the back side of the bumper. Install the top brackets. Line the end up with the bottom brackets and tighten bolts.



----- WARNING -----

Special care should be exercised in the handling, storage and installation of Ranch Hand equipment. The actual weight of each piece of equipment will vary depending on style and model. The weight of the equipment is sufficient in volume to warrant special care, assistance and in some instances, the use of mechanical equipment during the transfer and installation of the equipment. Do not assume a position directly under the equipment during installation. Be sure the equipment has been connected and stabilized during installation to prevent falling or shifting of positions. Periodically check tightness of bolts to make sure they are tight, and unlikely to fail.
Rev. 2023



1-877-287-8634

INSTALLATION INSTRUCTIONS

IMPORTANT NOTICE: Be sure to inspect and test fit product before having it coated or painted. Ranch Hand will not be responsible for the cost of the coating if any problems with fit or finish are not noted and addressed beforehand.

7. Reinstall the grille and reconnect camera plug.
8. Reinstall plastic shield and hood release latch.
9. Reinstall the plastic side panel and inner fender well.
10. Install the grill guard by using the ½” carriage bolts, washers and lock nuts provided.
11. Level grill guard and tighten all bolts and nuts. You may have to loosen the mounting bracket bolts to help with leveling.

2024 – UP MODELS:

12. Install the grill guard to the bottom brackets using black carriage bolts, washers and lock nuts provided. Level the grill guard and tight bolts.
13. Remove the black plastic cover that is located on top of the bumper. It is held on by clips.



14. The plastic piece can be left off or trimmed and reinstalled before installing the top brackets.



----- **WARNING** -----

Special care should be exercised in the handling, storage and installation of Ranch Hand equipment. The actual weight of each piece of equipment will vary depending on style and model. The weight of the equipment is sufficient in volume to warrant special care, assistance and in some instances, the use of mechanical equipment during the transfer and installation of the equipment. Do not assume a position directly under the equipment during installation. Be sure the equipment has been connected and stabilized during installation to prevent falling or shifting of positions. Periodically check tightness of bolts to make sure they are tight, and unlikely to fail.

Rev. 2023



1-877-287-8634

INSTALLATION INSTRUCTIONS

IMPORTANT NOTICE: Be sure to inspect and test fit product before having it coated or painted. Ranch Hand will not be responsible for the cost of the coating if any problems with fit or finish are not noted and addressed beforehand.

15. Install the top brackets. Loosen the top bracket enough to slide the brackets into place. Use carriage bolts to install top bracket to the grill guard.



16. If the vehicle does not have a camera, install small insert by using the black button head bolts and nuts.

MAKE SURE ALL NUTS AND BOLTS ARE TIGHT!

----- WARNING -----

Special care should be exercised in the handling, storage and installation of Ranch Hand equipment.

The actual weight of each piece of equipment will vary depending on style and model. The weight of the equipment is sufficient in volume to warrant special care, assistance and in some instances, the use of mechanical equipment during the transfer and installation of the equipment.

Do not assume a position directly under the equipment during installation. Be sure the equipment has been connected and stabilized during installation to prevent falling or shifting of positions.

Periodically check tightness of bolts to make sure they are tight, and unlikely to fail.

Rev. 2023