



1.877.287.8634

INSTALLATION INSTRUCTIONS

IMPORTANT NOTICE: Be sure to inspect and test fit product before having it coated or painted. Ranch Hand will not be responsible for the cost of the coating if any problems with fit or finish are not noted and addressed beforehand.

2022-up NEW CHEVY 1500 GRILL GUARD

PART # GGC22HBL1

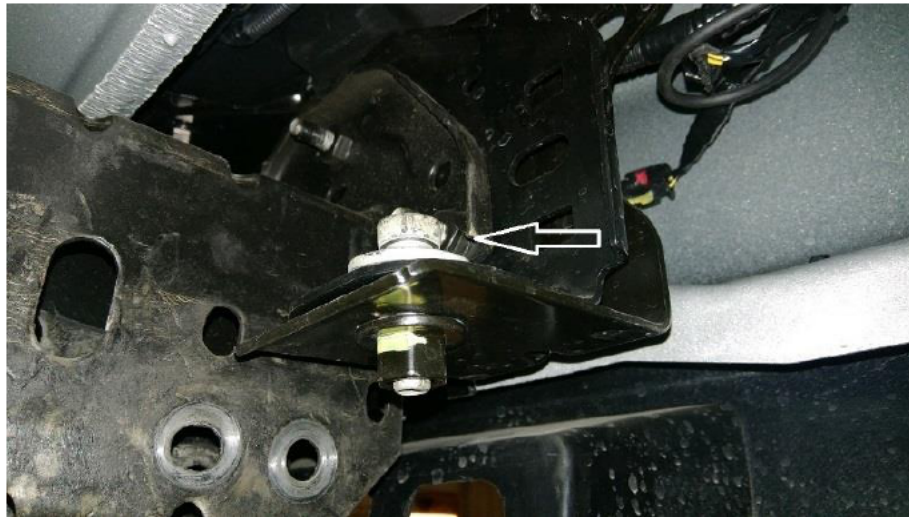
NOTE: WILL NOT FIT THE SILVERADO LTD OR ZR2 MODELS

TOOLS REQUIRED

- Ratchet and extension
- 7/16", 9/16", 5/8", 11/16" & 3/4" sockets and/or wrenches
- 18mm sockets and/or wrenches
- 5/32" Allen wrench
- Flat screwdriver
- Utility knife



1. On models with tow hooks, remove the shield that is around the tow hook. You will have to cut it off.
2. On models with tow hooks, you may need to loosen the 18mm bumper bolt, driver side only. This bolt could be in the way of the tow hook bolt.



3. *(Diesel)* On the driver side, cut the front tow hook bolt off. You will use a 1/2" x 4" bolt to reinstall the tow hook later.

----- **WARNING** -----

Special care should be exercised in the handling, storage and installation of Ranch Hand equipment.

The actual weight of each piece of equipment will vary depending on style and model. The weight of the equipment is sufficient in volume to warrant special care, assistance and in some instances, the use of mechanical equipment during the transfer and installation of the equipment.

Do not assume a position directly under the equipment during installation. Be sure the equipment has been connected and stabilized during installation to prevent falling or shifting of positions.

Periodically check tightness of bolts to make sure they are tight, and unlikely to fail.

Rev. 2023



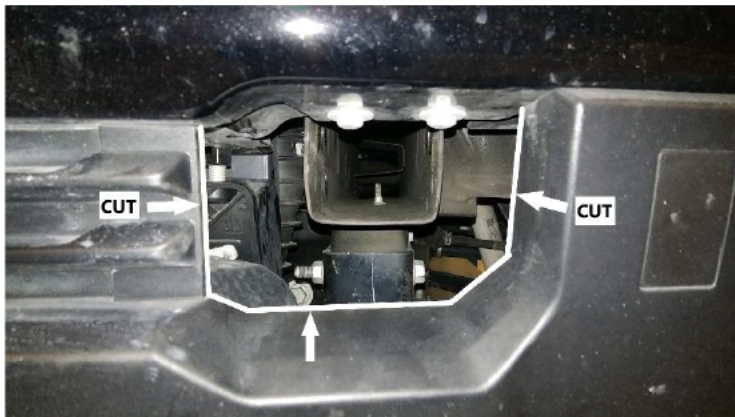
1.877.287.8634

INSTALLATION INSTRUCTIONS

IMPORTANT NOTICE: Be sure to inspect and test fit product before having it coated or painted. Ranch Hand will not be responsible for the cost of the coating if any problems with fit or finish are not noted and addressed beforehand.



4. Remove the tow hooks.
5. You will need to cut an opening for the brackets. With a utility knife, cut out the surrounding area where tow hooks were located.



6. On trucks without tow hooks, use the tab w/the two bolts through the top holes of the frame.



----- WARNING -----

Special care should be exercised in the handling, storage and installation of Ranch Hand equipment. The actual weight of each piece of equipment will vary depending on style and model. The weight of the equipment is sufficient in volume to warrant special care, assistance and in some instances, the use of mechanical equipment during the transfer and installation of the equipment. Do not assume a position directly under the equipment during installation. Be sure the equipment has been connected and stabilized during installation to prevent falling or shifting of positions. Periodically check tightness of bolts to make sure they are tight, and unlikely to fail.
Rev. 2023

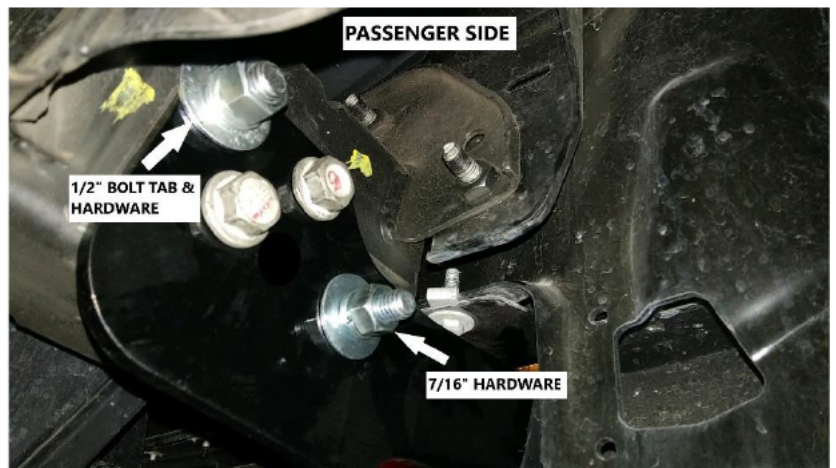
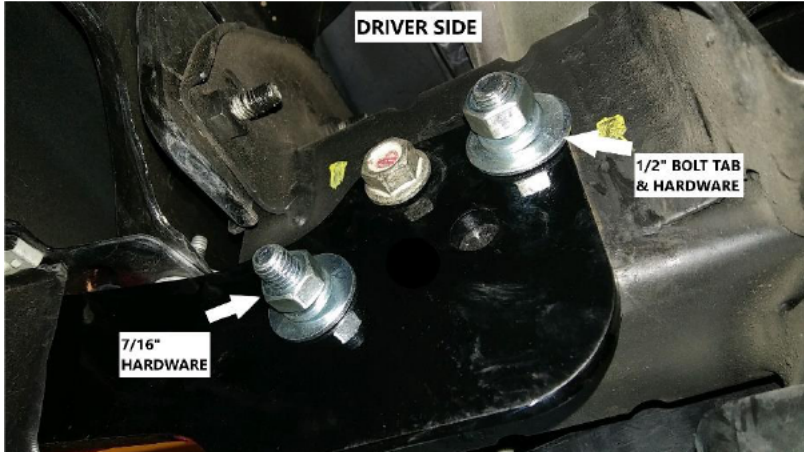


1.877.287.8634

INSTALLATION INSTRUCTIONS

IMPORTANT NOTICE: Be sure to inspect and test fit product before having it coated or painted. Ranch Hand will not be responsible for the cost of the coating if any problems with fit or finish are not noted and addressed beforehand.

7. Install brackets and tow hooks, if present, against the outside of the frame. Use factory tow hook bolts, 1/2" and 7/16" hardware to install.



NOTE: It may be easier to install the 1/2" bolt w/Tab from the hole by the body mount.



----- WARNING -----

Special care should be exercised in the handling, storage and installation of Ranch Hand equipment. The actual weight of each piece of equipment will vary depending on style and model. The weight of the equipment is sufficient in volume to warrant special care, assistance and in some instances, the use of mechanical equipment during the transfer and installation of the equipment. Do not assume a position directly under the equipment during installation. Be sure the equipment has been connected and stabilized during installation to prevent falling or shifting of positions. Periodically check tightness of bolts to make sure they are tight, and unlikely to fail.

Rev. 2023

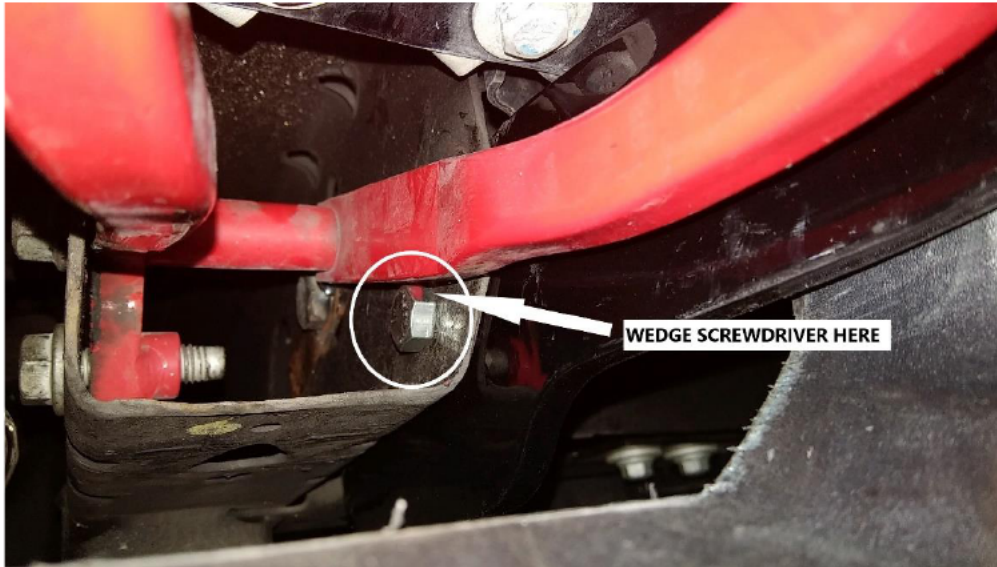


1.877.287.8634

INSTALLATION INSTRUCTIONS

IMPORTANT NOTICE: Be sure to inspect and test fit product before having it coated or painted. Ranch Hand will not be responsible for the cost of the coating if any problems with fit or finish are not noted and addressed beforehand.

8. Center the brackets through opening of the bumper then tighten bolts.
9. On the 7/16" bolt, you may not be able to use a flat washer on the head of the bolt. Also, to keep the bolt from spinning you can use a flat screwdriver to wedge between the tow hook and bolt head then tight the nut.



10. Mount the grill guard to the outside of the brackets with the black carriage bolts. Level grill guard and tighten bolts and nuts. You may have to loosen the mounting bracket bolts to help with leveling.



----- **WARNING** -----

Special care should be exercised in the handling, storage and installation of Ranch Hand equipment. The actual weight of each piece of equipment will vary depending on style and model. The weight of the equipment is sufficient in volume to warrant special care, assistance and in some instances, the use of mechanical equipment during the transfer and installation of the equipment. Do not assume a position directly under the equipment during installation. Be sure the equipment has been connected and stabilized during installation to prevent falling or shifting of positions. Periodically check tightness of bolts to make sure they are tight, and unlikely to fail.
Rev. 2023



1.877.287.8634

INSTALLATION INSTRUCTIONS

IMPORTANT NOTICE: Be sure to inspect and test fit product before having it coated or painted. Ranch Hand will not be responsible for the cost of the coating if any problems with fit or finish are not noted and addressed beforehand.

11. If your truck does not have a front camera, install the center insert. Use the black ¼" hardware to install.



MAKE SURE ALL NUTS AND BOLTS ARE TIGHTENED!



WARNING

Special care should be exercised in the handling, storage and installation of Ranch Hand equipment. The actual weight of each piece of equipment will vary depending on style and model. The weight of the equipment is sufficient in volume to warrant special care, assistance and in some instances, the use of mechanical equipment during the transfer and installation of the equipment. Do not assume a position directly under the equipment during installation. Be sure the equipment has been connected and stabilized during installation to prevent falling or shifting of positions. Periodically check tightness of bolts to make sure they are tight, and unlikely to fail.
Rev. 2023