



1.877.287.8634

**INSTALLATION INSTRUCTIONS**

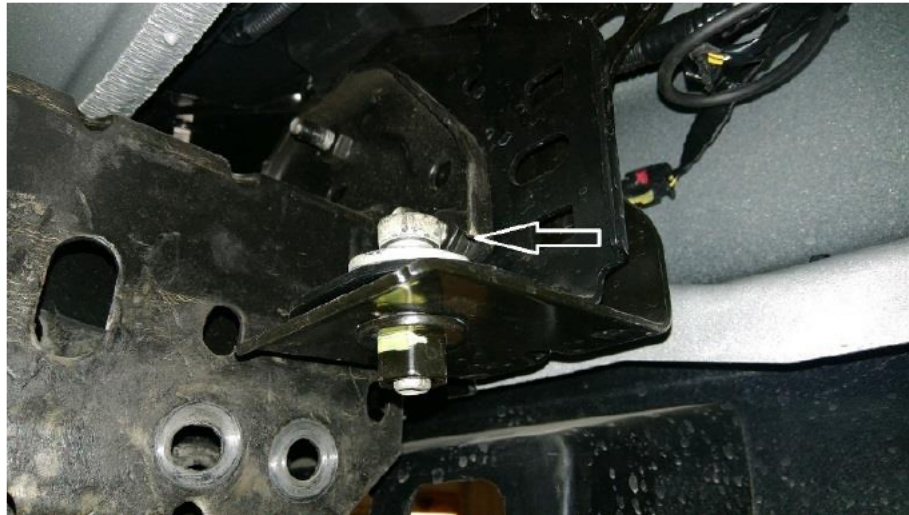
**IMPORTANT NOTICE:** Be sure to inspect and test fit product before having it coated or painted. Ranch Hand will not be responsible for the cost of the coating if any problems with fit or finish are not noted and addressed beforehand.

**2019-up CHEVY 1500 GRILL GUARD  
PARTS # GGC19HBL1 & GGC19HBL1C (camera cut)**

**\*\*\* FOR VEHICLES WITH SENSORS, YOU WILL NEED TO USE PSC19HBL1 \*\*\***

**\*\*\* TRUCKS WITH DIESEL MOTOR WILL HAVE TO CUT THE DRIVER SIDE TOW HOOK BOLT OFF \*\*\***

1. On models with tow hooks, loosen the 18mm bumper bolt, driver side only. This bolt is in the way of the tow hook bolt.



2. *(Diesel)* On the driver side, cut the front tow hook bolt off. You will use a ½" x 4" bolt to reinstall the tow hook later.



----- **WARNING** -----

Special care should be exercised in the handling, storage and installation of Ranch Hand equipment. The actual weight of each piece of equipment will vary depending on style and model. The weight of the equipment is sufficient in volume to warrant special care, assistance and in some instances, the use of mechanical equipment during the transfer and installation of the equipment. Do not assume a position directly under the equipment during installation. Be sure the equipment has been connected and stabilized during installation to prevent falling or shifting of positions.

Periodically check tightness of bolts to make sure they are tight, and unlikely to fail.

Rev. 2021



1.877.287.8634

### **INSTALLATION INSTRUCTIONS**

**IMPORTANT NOTICE:** Be sure to inspect and test fit product before having it coated or painted. Ranch Hand will not be responsible for the cost of the coating if any problems with fit or finish are not noted and addressed beforehand.

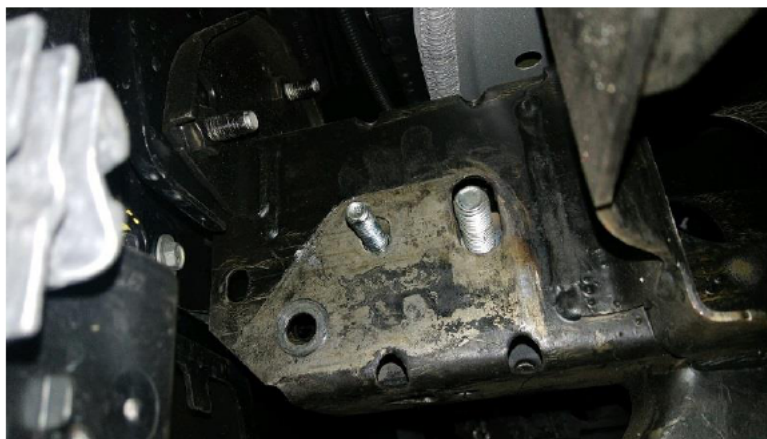
3. Remove the tow hook along with foam shield.



4. Cut a 2 ½" wide x 3" tall rectangle opening. This is for the mounting brackets.



5. Slide the 5" tab w/the bolts through the top holes of the frame.



### ----- WARNING -----

Special care should be exercised in the handling, storage and installation of Ranch Hand equipment.

The actual weight of each piece of equipment will vary depending on style and model. The weight of the equipment is sufficient in volume to warrant special care, assistance and in some instances, the use of mechanical equipment during the transfer and installation of the equipment.

Do not assume a position directly under the equipment during installation. Be sure the equipment has been connected and stabilized during installation to prevent falling or shifting of positions.

Periodically check tightness of bolts to make sure they are tight, and unlikely to fail.

Rev. 2021



1.877.287.8634

### **INSTALLATION INSTRUCTIONS**

**IMPORTANT NOTICE:** Be sure to inspect and test fit product before having it coated or painted. Ranch Hand will not be responsible for the cost of the coating if any problems with fit or finish are not noted and addressed beforehand.

6. From the back side, slide the mounting bracket through the 2 ½" x 3" opening and over the bolts. Use 3/8" and ½" washers, lock washers and nuts to install.



7. Reinstall the tow hooks. Use the factory tow hooks. If there are no tow hooks present, use ½" bolts. Also, at this time tighten the 18mm bolt that was loosened in step 1.



8. Repeat steps 2-6 on the passenger side.
9. For installation of the top mounting brackets, remove the factory grille. Open the hood and remove the hood release latch by removing two T15 screws.



### ----- WARNING -----

Special care should be exercised in the handling, storage and installation of Ranch Hand equipment. The actual weight of each piece of equipment will vary depending on style and model. The weight of the equipment is sufficient in volume to warrant special care, assistance and in some instances, the use of mechanical equipment during the transfer and installation of the equipment. Do not assume a position directly under the equipment during installation. Be sure the equipment has been connected and stabilized during installation to prevent falling or shifting of positions. Periodically check tightness of bolts to make sure they are tight, and unlikely to fail.  
Rev. 2021



1.877.287.8634

### **INSTALLATION INSTRUCTIONS**

**IMPORTANT NOTICE:** Be sure to inspect and test fit product before having it coated or painted. Ranch Hand will not be responsible for the cost of the coating if any problems with fit or finish are not noted and addressed beforehand.

10. Remove the ten plastic clips holding the plastic shield located above the grille.



11. Remove the factory grille by removing the four 10mm screws on top and pulling on the grill clips.

12. Remove the 13mm outer top bumper bolt. Install bracket then reinstall bolt.



13. Reinstall the grille, plastic shield and hood release latch.

14. Install the grill guard by using the 1/2" carriage bolts, washers and lock nuts provided.

15. Level grill guard and tighten all bolts and nuts. You may have to loosen the mounting bracket bolts to help with leveling.

### ----- **WARNING** -----

Special care should be exercised in the handling, storage and installation of Ranch Hand equipment.

The actual weight of each piece of equipment will vary depending on style and model. The weight of the equipment is sufficient in volume to warrant special care, assistance and in some instances, the use of mechanical equipment during the transfer and installation of the equipment.

Do not assume a position directly under the equipment during installation. Be sure the equipment has been connected and stabilized during installation to prevent falling or shifting of positions.

Periodically check tightness of bolts to make sure they are tight, and unlikely to fail.

Rev. 2021