

INSTALLATION GUIDE



SAFETY

THE SAFETY OF YOU AND OTHERS IS VERY IMPORTANT TO US!

In order to minimize this risk and make an informed decision about safety, it is important that you carefully read and follow the installation instructions we have provided.

We urge you to use your own good judgment and allow plenty of time for install.

HAZARD CHECKLIST

- Always wear personal protective equipment (PPE) such as: protective eye wear, gloves, close toed shoes, etc.
- We recommend that you use a certified mechanic or shop for professional installation.
- Always set emergency brakes on vehicle and use tire blocks to ensure vehicle stabilization.
- Use caution when lifting, we recommend the use of equipment to help lift bumpers into place.
- Use caution when using power tools such as air ratchet, etc.
- Take caution when installing wiring.
- Perform regular inspections of hardware, bolts, brackets, etc.
- Rigid light brackets are specifically designed to fit Rigid lights, we do not guarantee off brand fitment.
- Our winch mount is designed for Warn and Superwinch products. We do not guarantee off brand fitment.

USE & RISK

Bodyguard Products LLC is not responsible for damage to our products, or other subsequent damage that might occur, as a result of misuse or improper installation. While we do manufacture products that appear stronger than factory parts, our products should not be viewed or relied upon as life-saving devices in the event of a collision or rollover. We make no claims relating to airbag compatibility, crashworthiness, or sturdiness. It is the customer's responsibility to check with the vehicle manufacturer or auto dealer regarding airbag compatibility and automobile manufacturer's warranty before installing our products.

PREPARATION

- Ensure personal safety by checking for hazards and identifying risks.
- Check for correct hardware.
- Check for tools needed.
- Use either foam or tape on fenders to prevent scratches to the truck when installing your bumper.
- Please allow approximately 3-4 hours for installation.

HARDWARE

UNIVERSAL		
A2L-HK-FCS	A2L Front Center Section:	Qty
	1/4-20 x 5/8 Long, Stainless Steel SBHCS	20
	1/4-20 (.093-.126: Panel Range) Zinc Electroplate Spring Steel Cage Nut	20
A2L-HK-FFL	A2L Front Fog Light	Qty
	1/4-20 x 5/8 Long, Stainless Steel SBHCS	15
	1/4-20 (.093-.126: Panel Range) Zinc Electroplate Spring Steel Cage Nut	15
A2L-HK-FLP	A2L Front License Plate	Qty
	Plastic License Plate Nuts	4
	1/4-20 x 3/4 Long, Stainless Steel SBHCS	2
	1/4-20 Hex Grade 5 Serrated Flange Nut, Stainless Steel	4
	#14 x 5/8" Zinc License Plate Screw	4
A2L-HK-FLB	A2L Front Light Bar Mount	Qty
	1/4-20 x 5/8 Long, Stainless Steel SBHCS	6
	1/4-20 Hex Grade 5 Serrated Flange Nut, Stainless Steel	6

A2L-HK-GFH20	A2L Front Mount Kit 2020+ GM HD	Qty
	1/2"-13 x 4" Yellow Zinc Grade 8 Hex Bolt	4
	1/2" Washer, Grade 8 Zinc-Yellow	24
	1/2"-13 Grade 8 Steel Serrated Flange Nut Zinc	16
	1/4-20 x 3/4 Long, Stainless Steel SBHCS	6
	1/4-20 Hex Grade 5 Serrated Flange Nut, Stainless Steel	6
	Sensor Bezel (Part #6MH 3RXF AB) (Passenger Side Fog light Ring Sensor)	1
	Sensor Bezel (Part #6MH 2RXF AB) (Driver Side Fog light Ring Sensor)	1
	Standard 1/4 hardware.	

BUMPER REMOVAL

1. Using a T-10 Torx socket, remove the 3 inner fender liner bolts referenced in the image below.



2. Pull the front part of the fender flare back. There are no tools required for the step, they pull free by hand. Then remove the 7mm bolt that was hidden behind the fender flare.

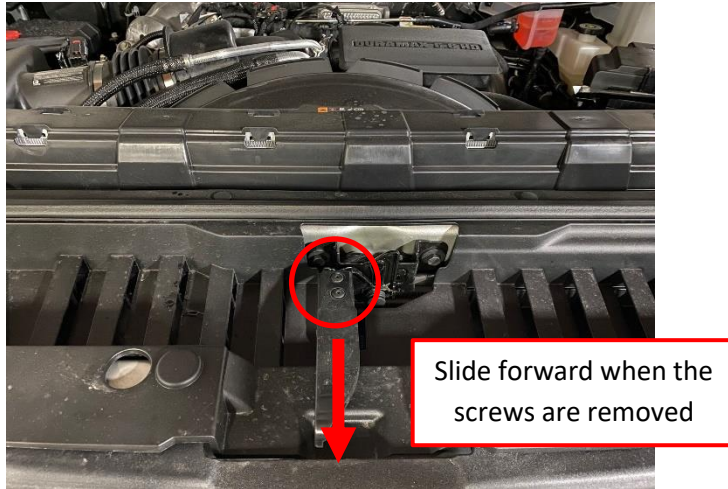


3. Pull the valance off the vehicle. There are no tools required for this step, it pulls off by hand. Pull outwards on the top corners first.

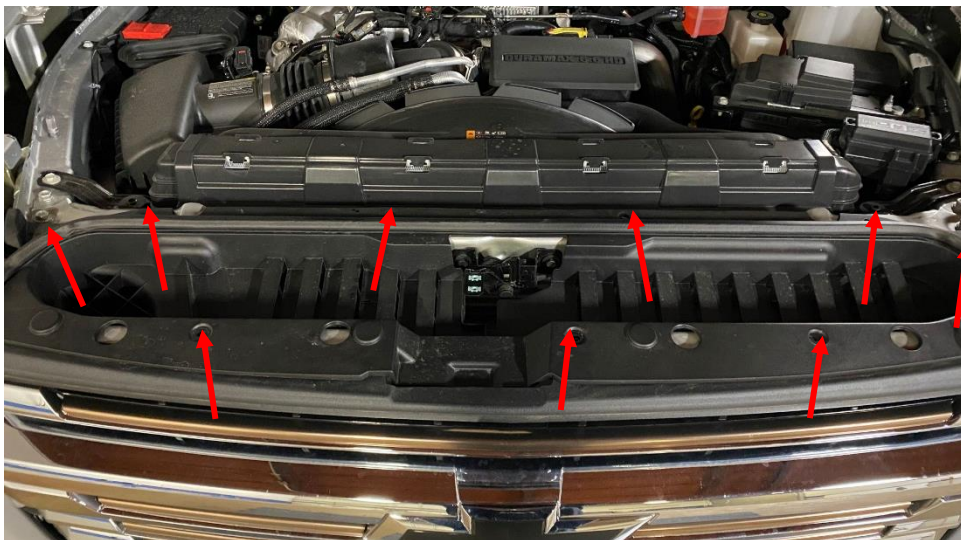


Pull outwards on the seam

- Repeat steps 1-3 on the other side of the vehicle.
- Use a T-10 socket to remove the two bolts holding on the outer portion of the hood latch handle. Remove the outer portion of the hood latch handle.



- Using a pry tool, remove the plastic clips (x9) that hold on the radiator cover. Then, remove the radiator cover from the vehicle.



- Use a 10mm socket to remove the upper grille bolts (x4).

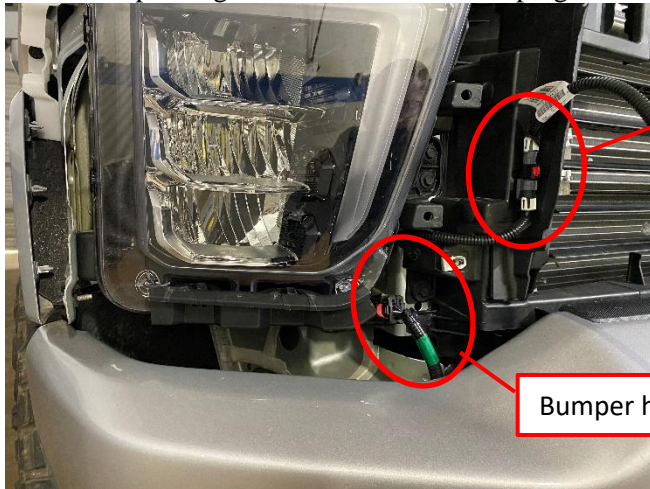


8. Use a 10mm socket to remove the lower grille bolts (x2). Then, remove the grille from the vehicle. After the bolts are removed, the grill will pull off by hand.

NOTE: If your truck is equipped with a front view camera, you will have to unplug the camera harness on the passenger side.



9. On the passenger side of the vehicle, unplug the main bumper harness connector below the headlight.



Camera harness plug

Bumper harness plug

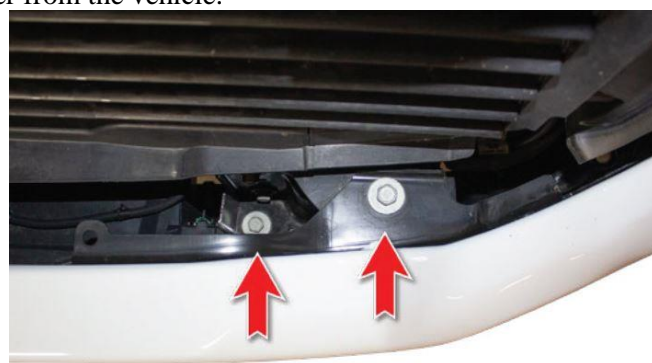
10. On the driver side of the vehicle, unplug the engine block heater connector underneath the headlight.



11. From underneath the vehicle, use a 15mm socket to remove the bumper side support bar bolts referenced below.



12. Looking down from the top of the bumper, there are two mounting bolts per side. Use a 18mm socket to remove these 4 bolts. Then, remove the OEM bumper from the vehicle.

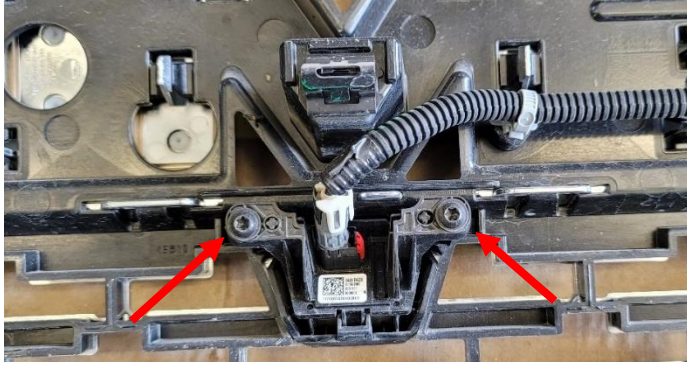


13. Use a 18mm socket & wrench to remove the tow hook mounting bolts (2 per hook). Then, remove the tow hooks from the vehicle.

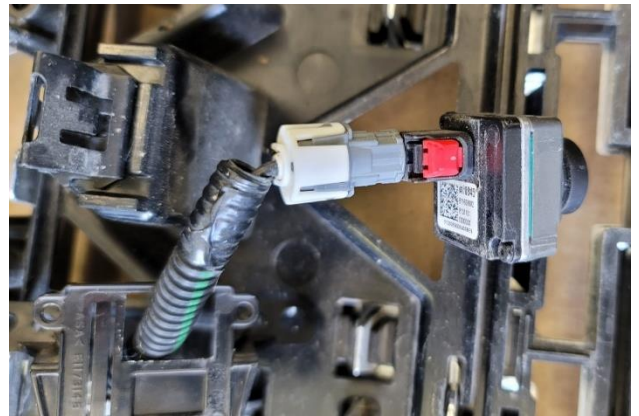
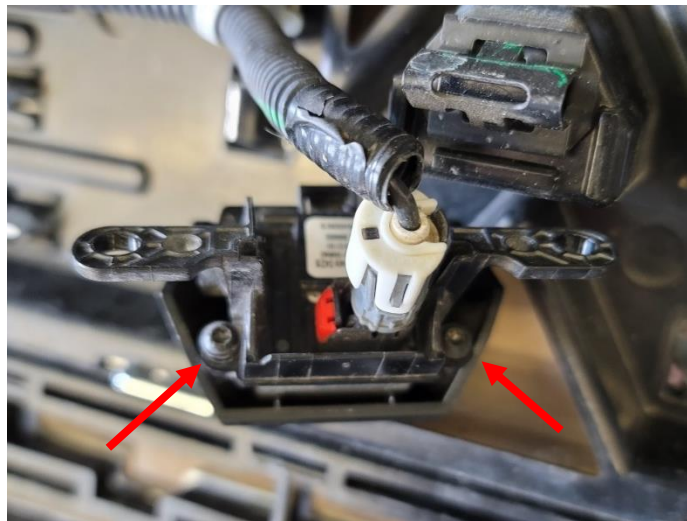


SPORT BAR CAMERA RELOCATION (Optional)

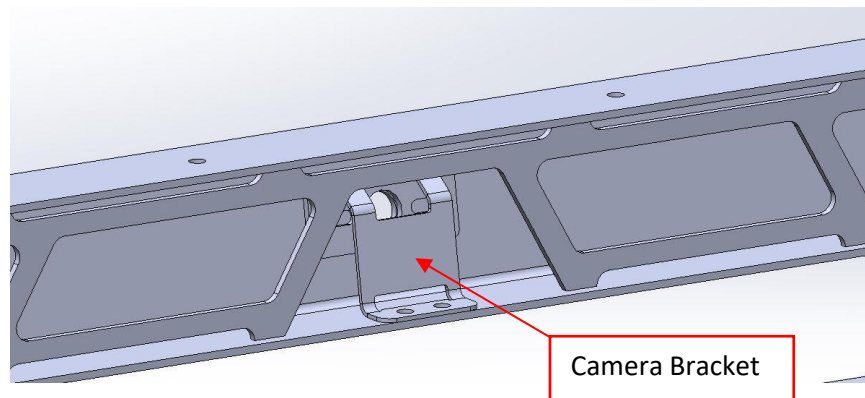
A. Remove camera from grille by removing the two torx screws shown below.



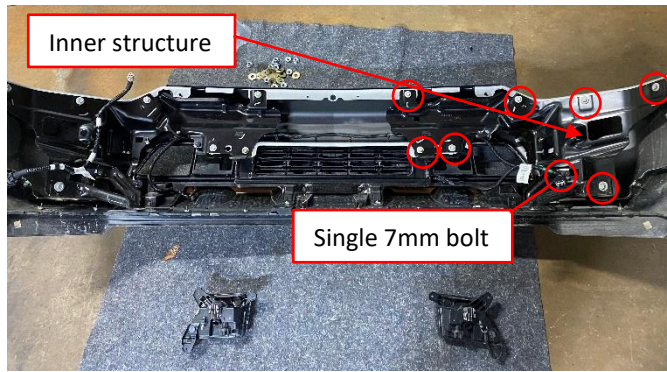
B. Remove camera from factory camera bracket by removing the two torx screws shown below, then disconnect the camera from the wiring harness.



C. Now, using the optional **89758 camera harness extension** (this extension is only needed if you have a sport guard or grill guard). Re-route your front camera to the camera channel on the sport bar. Insert camera into the camera hole and secure using the provided camera bracket and 1/4"-20 hardware.

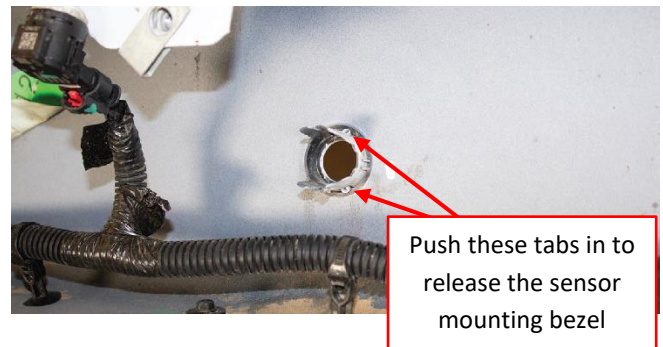
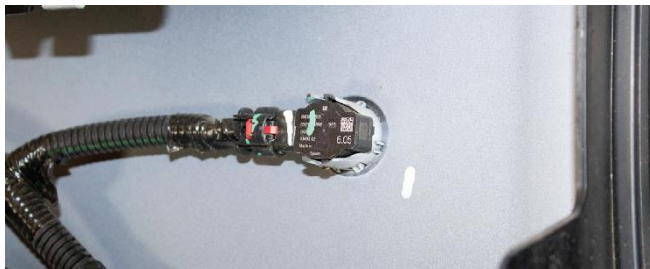


14. With the OEM bumper on a flat surface, remove the 7mm bolt (1 per side) that holds the inner structure to the bumper. Use a 13mm socket to remove the mounting bolts (7 per side) that hold in the inner metal structure of



15. Remove the parking sensors from their mounting rings. Do this by spreading the two tabs on the back side of the mounting rings and pushing the sensors out the back of the rings. You can leave the sensors plugged into the harness.

***NOTE:** Make sure the keep track of what position/orientation the sensors were mounted in so you can keep the same position/orientation on your new bumper.*



16. Release the series of clips holding the harness to the bumper. Then remove the parking sensor/fog light harness from the bumper. Loosely route the parking sensor harness through the bumper. You may need to unravel the parking sensor cable from the harness to gain length to reach the parking sensor locations.

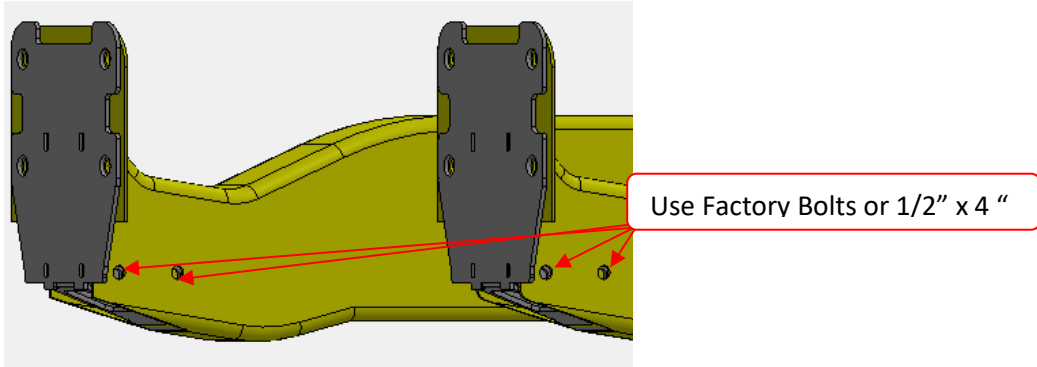
17. Remove the sensor mounting rings from the bumper. Do this by pressing in the tabs on the back side of the rings and pushing the rings out the front side of the bumper. Make sure to keep track of the position/orientation that these came off the OEM bumper so they can be reinstalled on your new bumper in the same position/orientation.

***NOTE:** Make sure the keep track of what position/orientation the sensors were mounted in so you can keep the same position/orientation on your new bumper.*

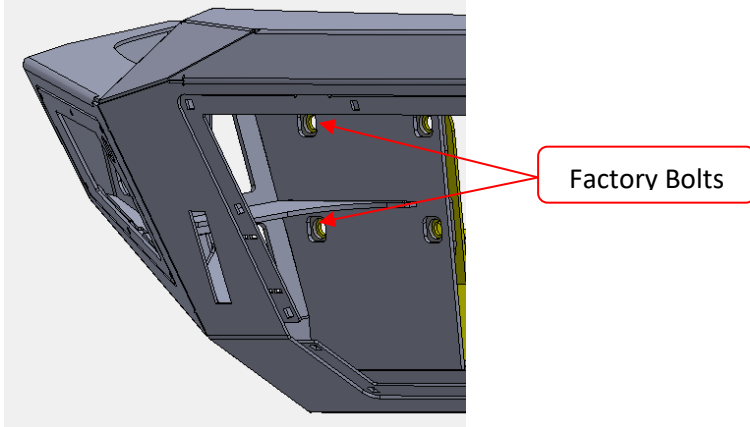


BUMPER INSTALLATION

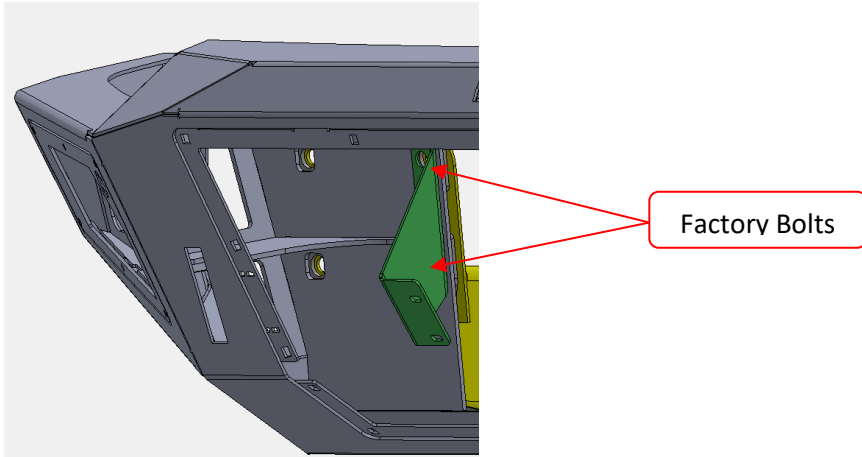
1. If your truck was equipped with factory tow hooks, use the bolts removed to install the mounts. If not use the supplied 1/2" x 4" bolts supplied.



2. Put the shutter systems through the center of the bumper, then bumper align the outside bolts and attach the bumper using factory bolts.

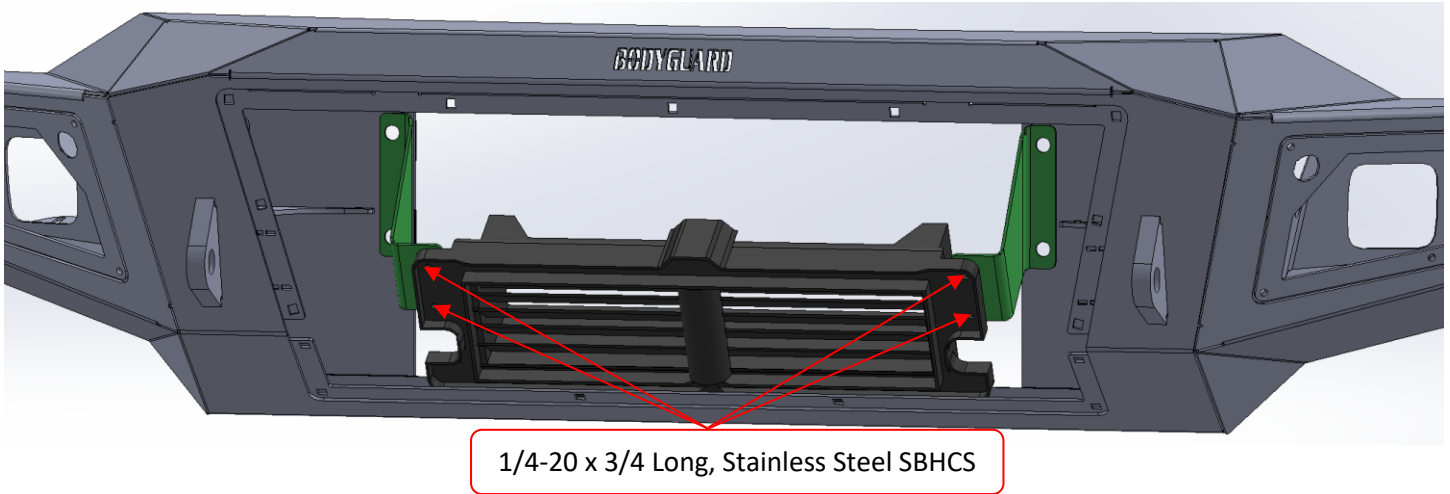


3. Install the shutter system mount on with remaining factory bolts. Then adjust bumper fitment and tighten all mount bolts.



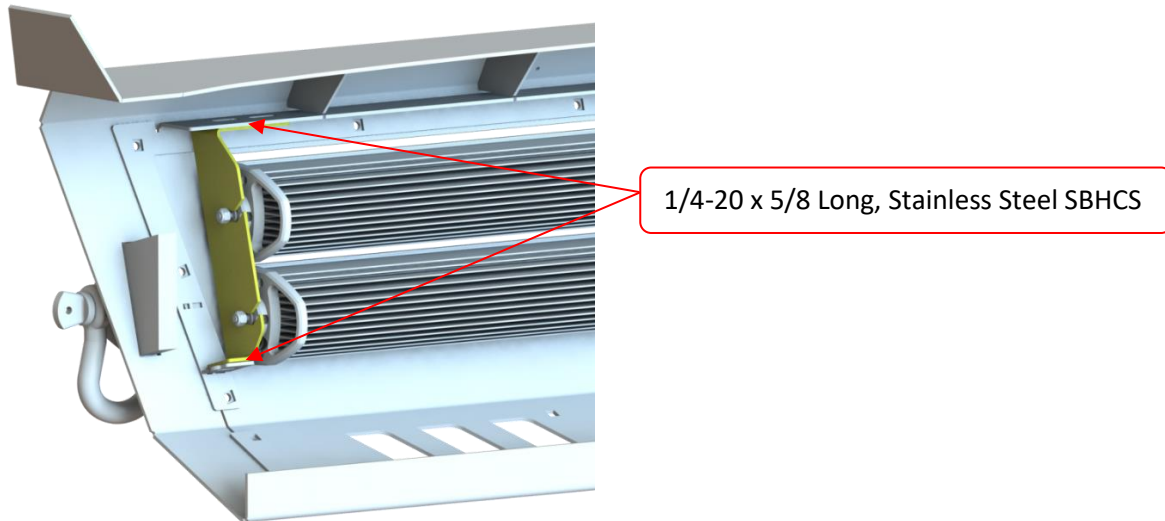
ACTIVE AERO SHUTTERS

1. The Shutter System has hook on the top that allows you to hang it and then mount using the supplied 1/4" x 3/4" bolts.



CENTER LIGHTBAR INSTALLATION

1. Attach the Z brackets to the bumper with supplied 1/4" x 5/8" bolts (3x per side).
2. Attach Light bar with hardware supplied with light bar.
3. Install the supplied 1/4" Cage nuts around the skid mount.



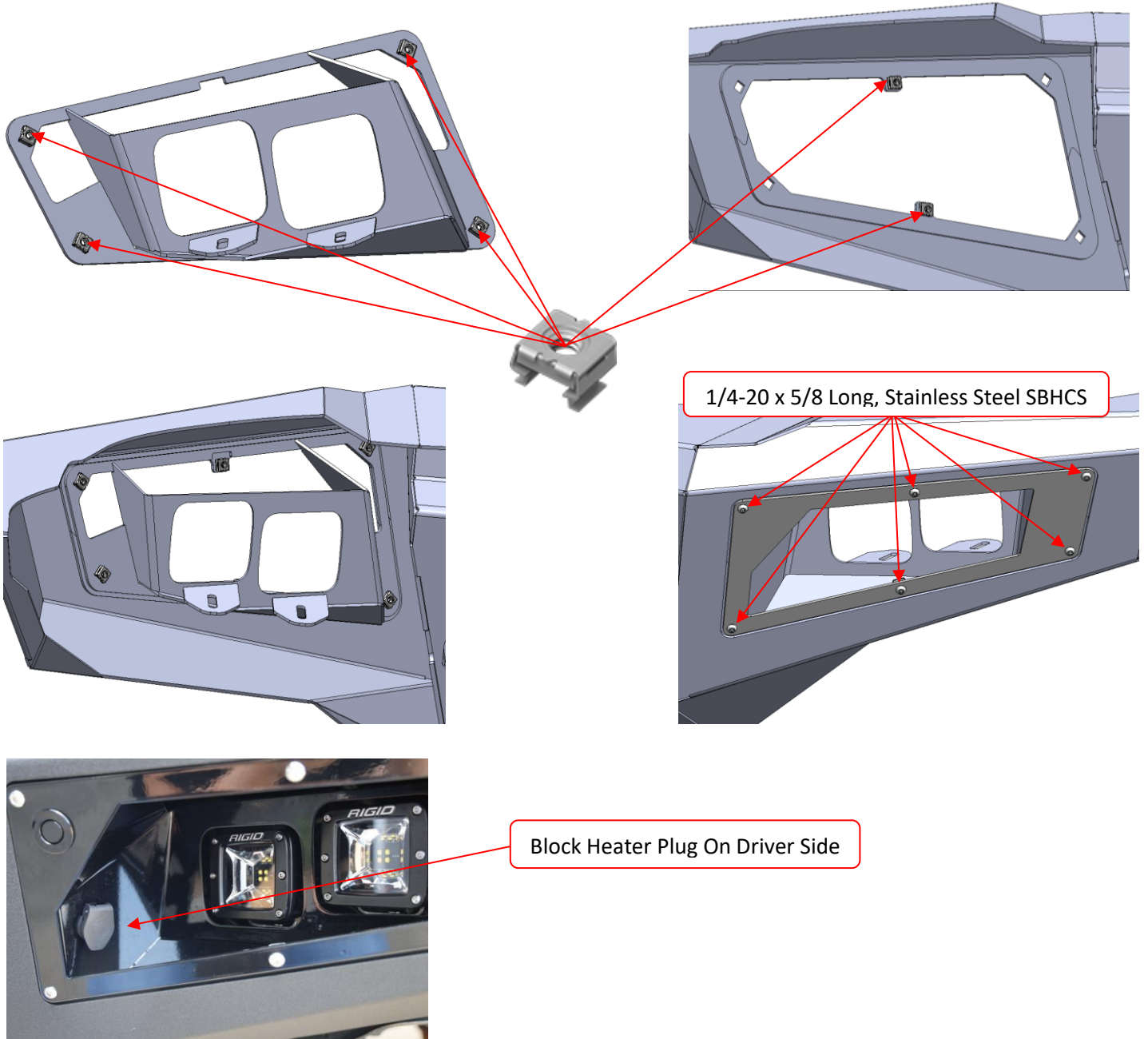
BUMPER INSTALLATION

1. Attach the bumper with the 1/2" stainless hardware, leaving enough space to adjust the bumper as needed into position. Using a tape measure, adjust the bumper vertically and horizontally to the desired body gaps. Once the bumper is lined up, tighten all hardware for the bumper and the mounts. Using jack stands or an additional person to help support the bumper is recommended.
2. Now that the bumper is mounted and installed, wire in the lighting and install the grill, valence, fender flares, fender liners in reverse order. Plug in the front camera and main bumper harness and route and secure wiring as desired.

NOTE: The camera harness will go under the bumper top plate up through a cut hole in the uprights to the camera mount in the grill.

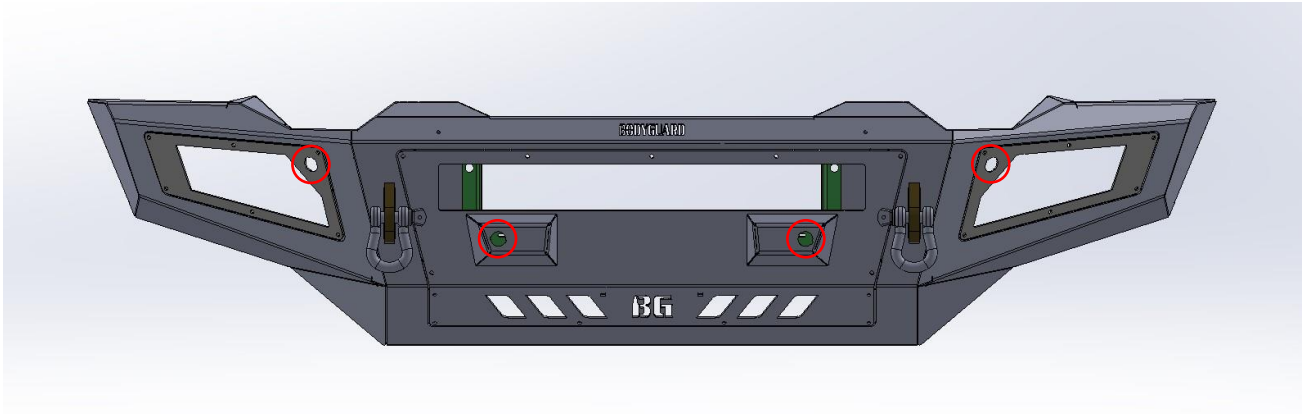
FOG LIGHT INSTALLATION

1. Install the (4) 1/4" cage nuts into the Fog Light Bucket.
2. Install (2) 1/4" cage nuts into the center of the Fog Light Cut out in the bumper.
3. If you have the block heater it mounts in the Driver side fog bucket, if you do not install supplied plug.



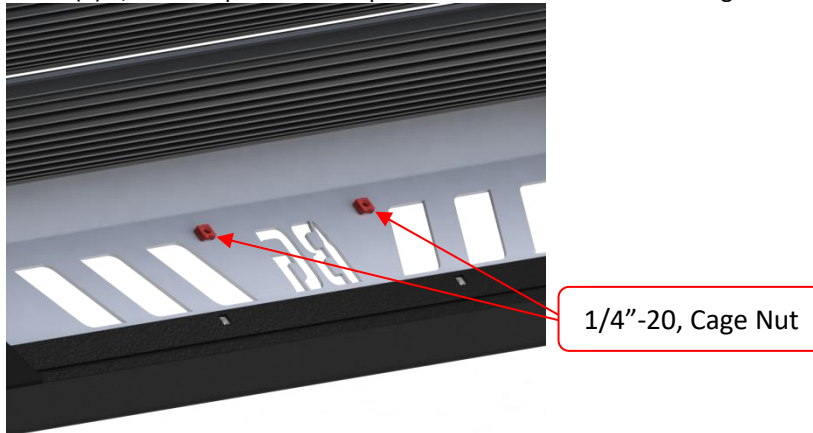
PARKING SENSOR INSTALLATION

1. Install 1/4"-20 cage nuts (27x) into the square holes of the bumper. Attach the skid plate using the 1/4-20 x 5/8 Long, Stainless Steel Bolts(15x). Install the removed OEM parking sensor bezels into the circled locations as removed from the factory OEM bumper, then clip the parking sensors into the bezels. Plug in the parking sensor harness, attach the fog light trim rings using 1/4-20 x 5/8 Long, Stainless Steel Bolts(12x)(the fog light bucket and trim ring will sandwich and bolt together), and attach the sensor pod body using 1/4-20 x 5/8 Long, Stainless Steel Bolts(8x)

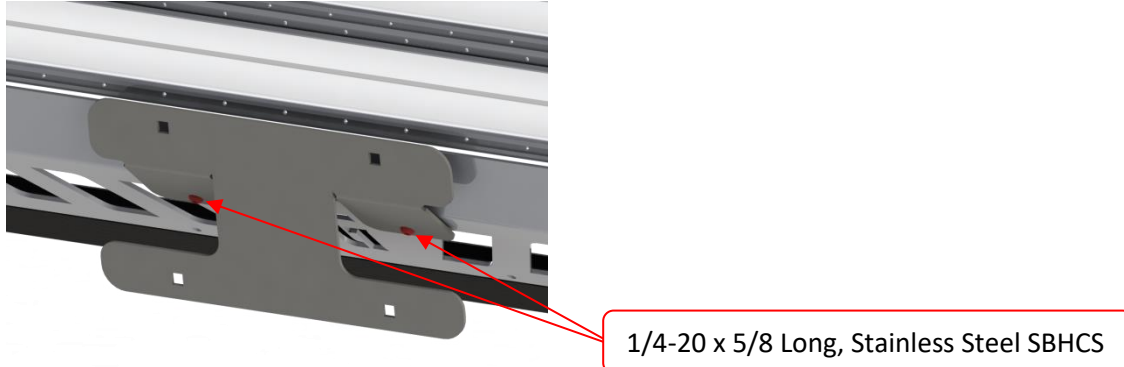


LICENSE PLATE INSTALLATION

1. Install (2) 1/4"-20 Clip Nuts into square holes on each side of BG logo



2. Then install license plate bracket to skid plate using (2) 1/4"-20 x 5/8" button head screws



FINISHING UP

- Install shackles.
- Confirm that all hardware is tightened and everything is secure.
- Secure wiring harnesses for lights and sensors.
- Reconnect the battery.
- Test all lighting and wiring before using vehicle (fog lights, sensors, etc.).

MAINTENANCE

- Periodically check that all hardware is tightened and that all wiring and connections are secure.
- Periodically check that all sensor plugs are secure.
- Routinely wash bumper to maintain the powder coat finish.

FEEDBACK

We'd love to hear from you!

Please send your pictures, testimonials, comments, or suggestions to us by email at info@bodyguardbumpers.com. We frequently use customer pictures for brochures and marketing materials, and we always welcome customer feedback to ensure quality improvements within our company. Thanks for your purchase; we appreciate your business very much!

Where **STRENGTH** Meets *Style!*™



@BodyguardBumpers