



1.877.287.8634

**INSTALLATION INSTRUCTIONS**

**IMPORTANT NOTICE:** Be sure to inspect and test fit product before having it coated or painted. Ranch Hand will not be responsible for the cost of the coating if any problems with fit or finish are not noted and addressed beforehand.

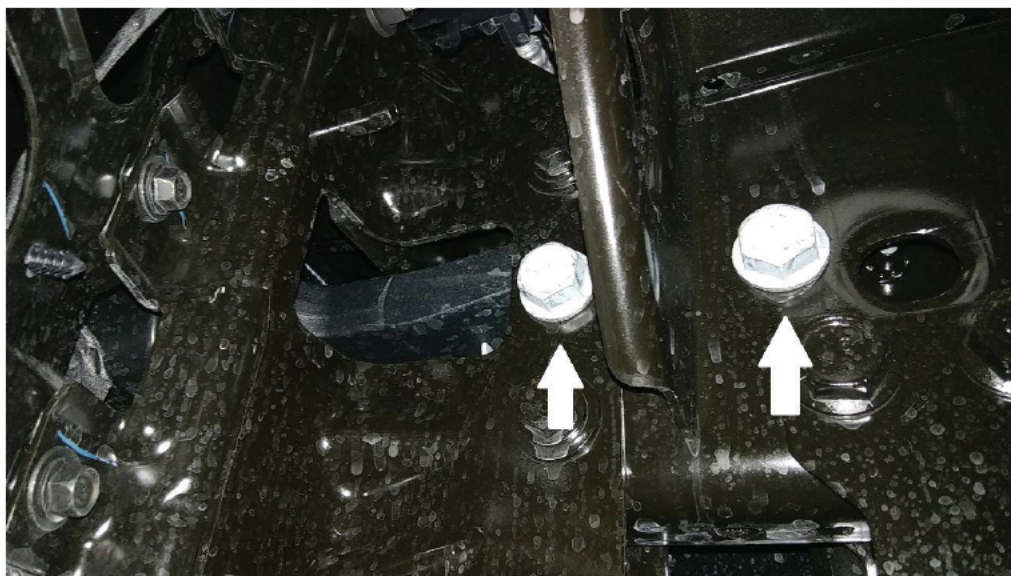
**2019-up RAM 2500/3500HD**

**PART #'s: FBD191BLR / FBD191BLRC / BTD191BLR / FSD191BL1 /  
FSD191BL1C / BSD191BL1**

1. Begin by locating the fog light / sensor wiring harness. The wiring harness is located just above the driver side fog light.



2. Remove the factory tow hooks by taking off the two 24mm bolts.



----- **WARNING** -----

Special care should be exercised in the handling, storage and installation of Ranch Hand equipment. The actual weight of each piece of equipment will vary depending on style and model. The weight of the equipment is sufficient in volume to warrant special care, assistance and in some instances, the use of mechanical equipment during the transfer and installation of the equipment. Do not assume a position directly under the equipment during installation. Be sure the equipment has been connected and stabilized during installation to prevent falling or shifting of positions. Periodically check tightness of bolts to make sure they are tight, and unlikely to fail.  
Rev. 2021



1.877.287.8634

### **INSTALLATION INSTRUCTIONS**

**IMPORTANT NOTICE:** Be sure to inspect and test fit product before having it coated or painted. Ranch Hand will not be responsible for the cost of the coating if any problems with fit or finish are not noted and addressed beforehand.

3. Uninstall the factory bumper by removing the two 18mm bolts.



4. Remove the fog lights and mount them to the fog light brackets.
5. Remove the sensors and wiring harness from the factory bumper and install them in the front bumper replacement. Please remember to use the provided rubber grommets.
6. Mount the provided mounting plates to the outside of the frame. The angle iron will rest on top of the frame.
  - a. Note: The two holes where the factory bumper was mounted may have to be drilled out to 1/2".
7. Use the 1/2" x 4" bolts in the top and bottom holes.
8. Reinstall the tow hooks using the factory bolts.
9. Install the Legend Front Bumper to the mounting plate using the 1/2" x 2" bolts.
10. Center and level the bumper then continue by completely tightening the bolts.
11. Mount the fog light bracket to the two 7/16" slotted holes located on the bottom of the mounting bracket. Level the fog light through the opening in the skirt and use the 3/8" bolts provided. If the sensor wires are tight, switch the straight outside sensor and the 90-degree sensor (by the fog light) to gain a couple inches.
12. Plug in the fog light / sensor harness.
  - a. Note: We advise securing the wiring / sensor harness with a zip-tie.

**MAKE SURE ALL NUTS AND BOLTS ARE TIGHT!**

### ----- WARNING -----

Special care should be exercised in the handling, storage and installation of Ranch Hand equipment. The actual weight of each piece of equipment will vary depending on style and model. The weight of the equipment is sufficient in volume to warrant special care, assistance and in some instances, the use of mechanical equipment during the transfer and installation of the equipment. Do not assume a position directly under the equipment during installation. Be sure the equipment has been connected and stabilized during installation to prevent falling or shifting of positions. Periodically check tightness of bolts to make sure they are tight, and unlikely to fail.  
Rev. 2021