



Preparation:

- Disconnect the negative battery terminal. Park the vehicle on level ground and set the emergency brake.
 - We recommend reading through the installation instructions in whole before performing the work.
 - Estimated Installation Time: 2 Hours
- **This installation requires 2 people for best results*****

You will need the following tools:

- | | | |
|---------------|---------------|---------------|
| - Ratchet | - 10mm Socket | - 12mm Socket |
| - 14mm Socket | - 17mm Socket | |

Included in Kit:

Stock Hardware is Reused

Removal:

1. Unplug the fog light connector and front parking sensor connector on each side of the bumper. (Fig A)



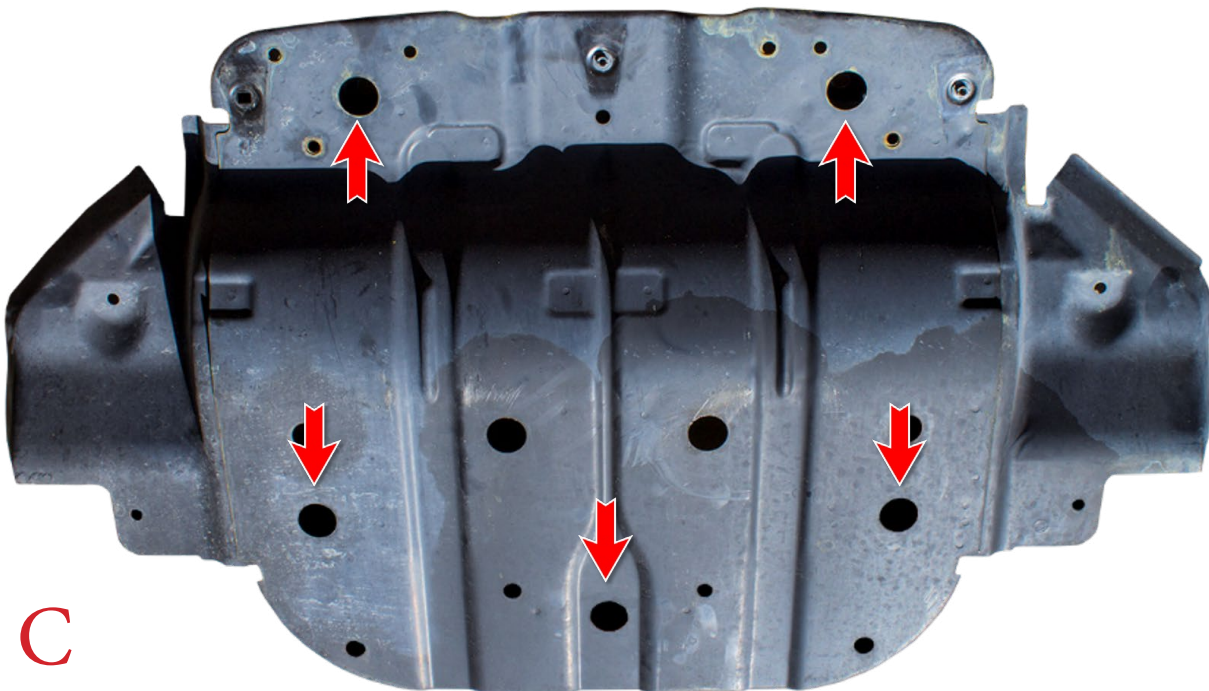
Fig A



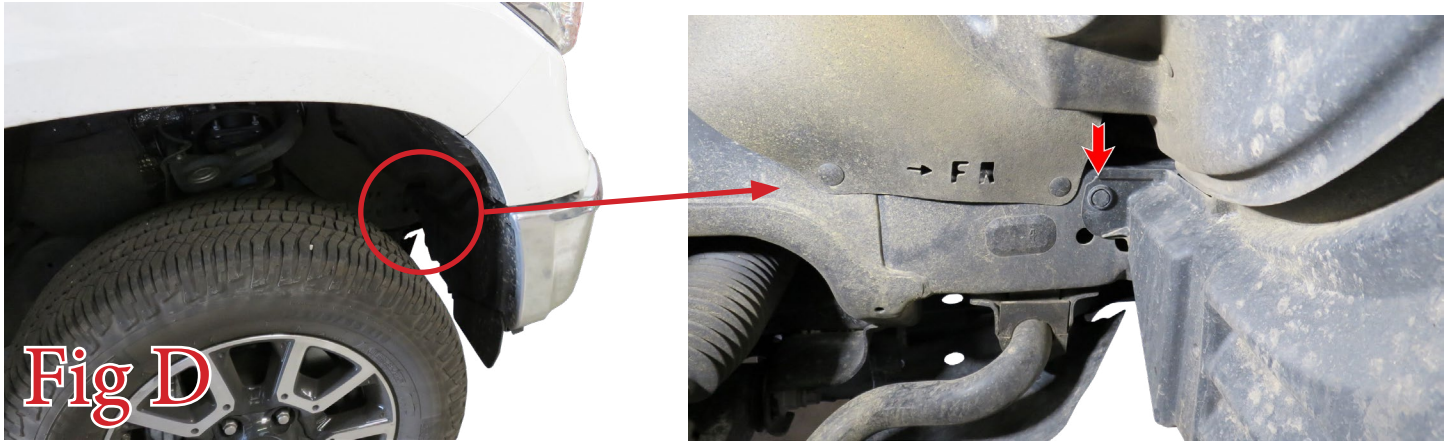
2. From underneath the truck, remove the 3 bolts (10mm) along the bottom edge of your bumper. (Fig B)



3. Using a 12mm Socket, remove the 5 bolts holding on your skid plate. Then, remove the skid plate from the vehicle. (Fig C)



4. There is one plastic clip (per side) that needs to be removed. This plastic clip sits in the front lower portion of each of your wheel wells. (Fig D)



5. Using a 14mm Socket, remove the bumper mounting nuts. There are 8 total, 4 per side. Set these nuts aside for reuse. (Fig E)



6. Pull the OEM Bumper off the truck.
7. Use a 17mm Socket to remove the two tow hook bolts (per side). Then, remove the tow hooks. Save two of these bolts for reuse. (Fig F)

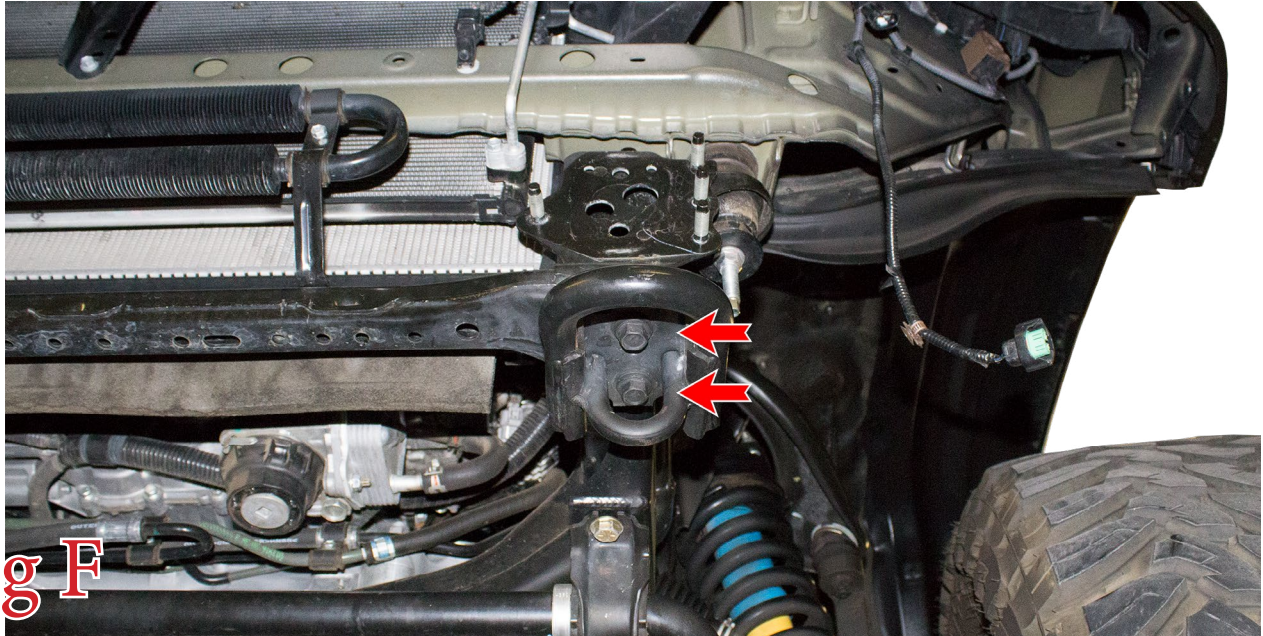


Fig F

8. Remove the parking sensors from the OEM Bumper. First, unplug the parking sensor. Then, slide the white plastic piece to the side. Finally, push the sensor out the front of the bumper. Make sure to keep track of the position of the parking sensors so you can install them on your new bumper in the same position. (Fig G)



Slide the plastic piece to the side to release the parking sensor.

Fig G



9. Remove each parking sensor harness from the OEM bumper by releasing the two plastic clips. Keep track of which side each harness came off of, so that you can install them on your new bumper on the same side. (Fig H)

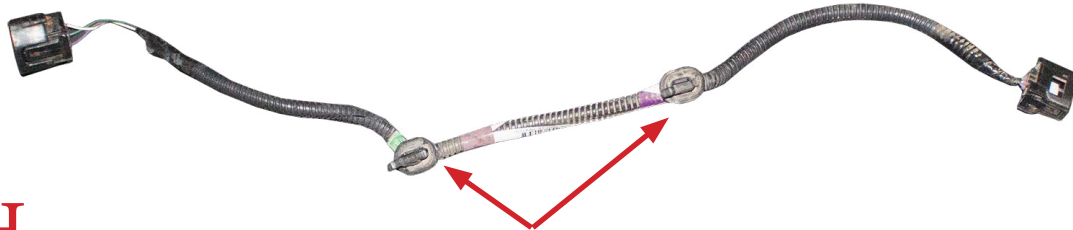


Fig H

Release These Clips to Remove the Harness

Installation:

10. If you have any lights or a winch to install on your bumper, now is a good time to do so. Please follow the light/winch manufacturer's guide for mounting/wiring information.

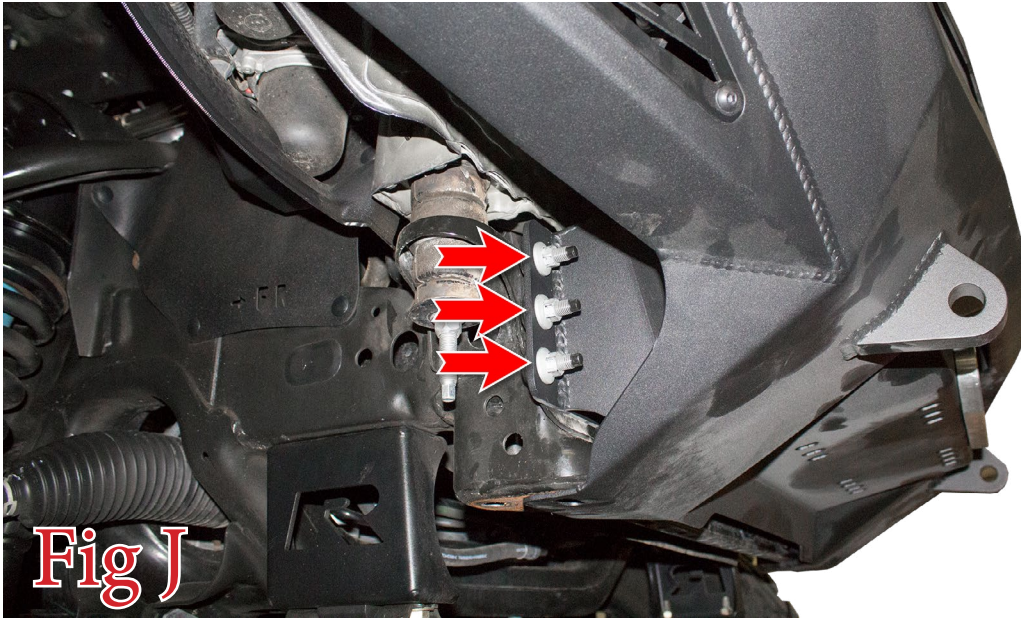
11. Install the parking sensors into your new bumper in the same position/orientation as they came off the OEM bumper. To install the sensors, push them into their holes from the front side of the bumper, then slide the white plastic piece into place on the back side of the bumper. (Fig I)



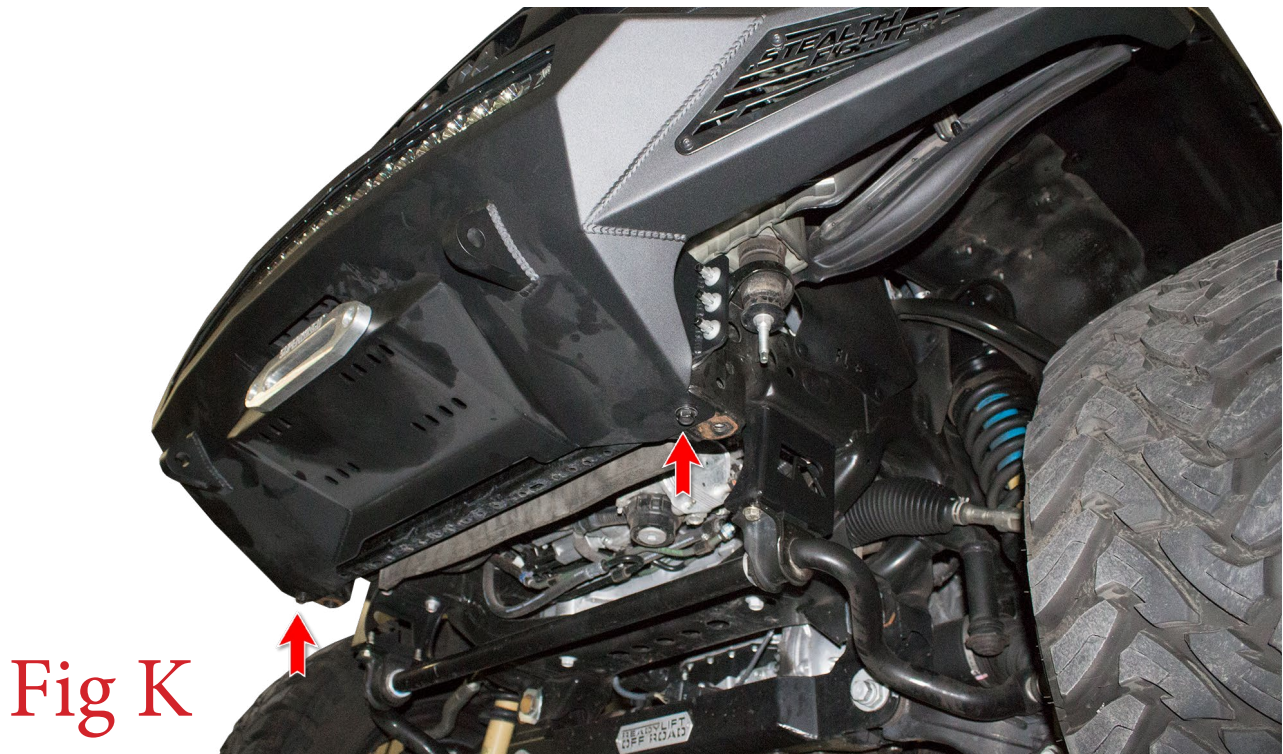
Fig I



12. Set the bumper in place on the vehicle. Use the OEM Nuts (x8) that were set aside in Step 5 to secure the bumper to the truck. Leave these bolts loose for now. (Fig J)



13. Install 2 of the bolts that were removed in Step 7 in the bumper's bottom mounting holes. Leave these bolts loose for now. (Fig K)



14. Align the bumper so it is straight in relation to the valance/grille. Then, go back and torque the bumper mounting bolts to OEM torque spec.

15. Stand back and enjoy your new ADD Stealth Fighter™ Front Bumper.

16. Check and re-tighten, if necessary, all mounting bolts after 100 miles and periodically thereafter.

