

21+ / FORD BRONCO

KRAWLER FRONT BUMPER

F230311070102



TOOLS REQUIRED

- | | |
|----------------------------|-------------------|
| (Torx) T40 | Grinder |
| (Allen) 5/16 | Cutoff Wheel |
| (Wrench) 13mm, 15mm, 3/4 | Black Spray Paint |
| (Socket) 13mm, 15mm, 3/4 | Gray Sharpie |
| (Deep Socket) 3/4 | Zip Ties |
| Ratchet | |
| Flat Head/Fastener Remover | |
| Needle Nose Pliers | |



TIME REQUIRED

- 4 hours for OEM Removal/Bumper Install
- 1 Additional Hour to Wire Lights

****Labor Rates are based on a vehicle with no pre-existing damage. Wiring labor is based on a standard wiring procedure with light switches installed in an easily accessible location. Custom light triggering or switch mounting location will result in a greater labor charge.****



SKILL LEVEL

-Easy/Intermediate

****This installation requires 2 people for best results****



INCLUDED IN KIT

- 12- 1/2-13 x 1 1/4" Hex Head Bolt - Grade 8
- 12- 1/2-13" Metal Lock Nuts - Grade C
- 12- 1/2" Flat Washer - Zinc

⚠️ WARNINGS/CAUTIONS BEFORE STARTING INSTALLATION ⚠️

-BEFORE YOU INSTALL THIS KIT-

Read and understand all instructions, warnings, cautions, & notes contained in this installation instruction guide. Consult your vehicle owner's manual for proper disconnection of electrical and lifting of vehicle if required for installation of this product.

This install may require some technical skills and knowledge of basic mechanical work. If you do not feel that you are capable of performing this install please take this product to a trained professional.

After reading this guide please contact us with any questions or concerns before installing product.
Customer Service (480) 671-0820

Addictive desert designs is *not* responsible for any bodily injury or harm to you or your vehicle as a result of an improper install.

Proper installation of this kit required knowledge of the factory recommended procedures for removal and installation of original equipment components.

We recommend that the factory shop manual and any special tools needed to service your vehicle be on hand during the installation. Installation of this kit without proper knowledge of the factory recommended procedures may affect the performance of these components and the safety of the vehicle.

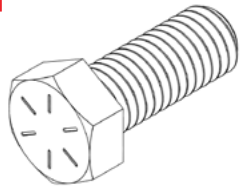
Inspect all contents of this package to make sure product is not damaged and all installation hardware has been included. If parts are missing from kit, please be prepared to provide the following information:

1. Name of purchase location
2. Bar Code on side of box
3. Date above bar code
4. Date inside box cover

ALWAYS WEAR EYE PROTECTION WHEN OPERATING POWER TOOLS

HARDWARE/PARTS

A.



1/2-13 X 1-1/4" HEX HEAD GRADE 8

QTY: 12

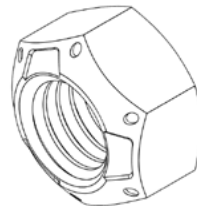
A1.



1/2" FLAT WASHER ZINC

QTY: 24

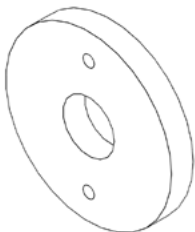
A2.



1/2-13" LOCK NUT GRADE C

QTY: 12

B.



THICK SPACER

QTY: 2

C.



THIN SPACER

QTY: 2

D.



BOTTOM MOUNT PASSENGER

QTY: 1

E.



BOTTOM MOUNT DRIVER

QTY: 1

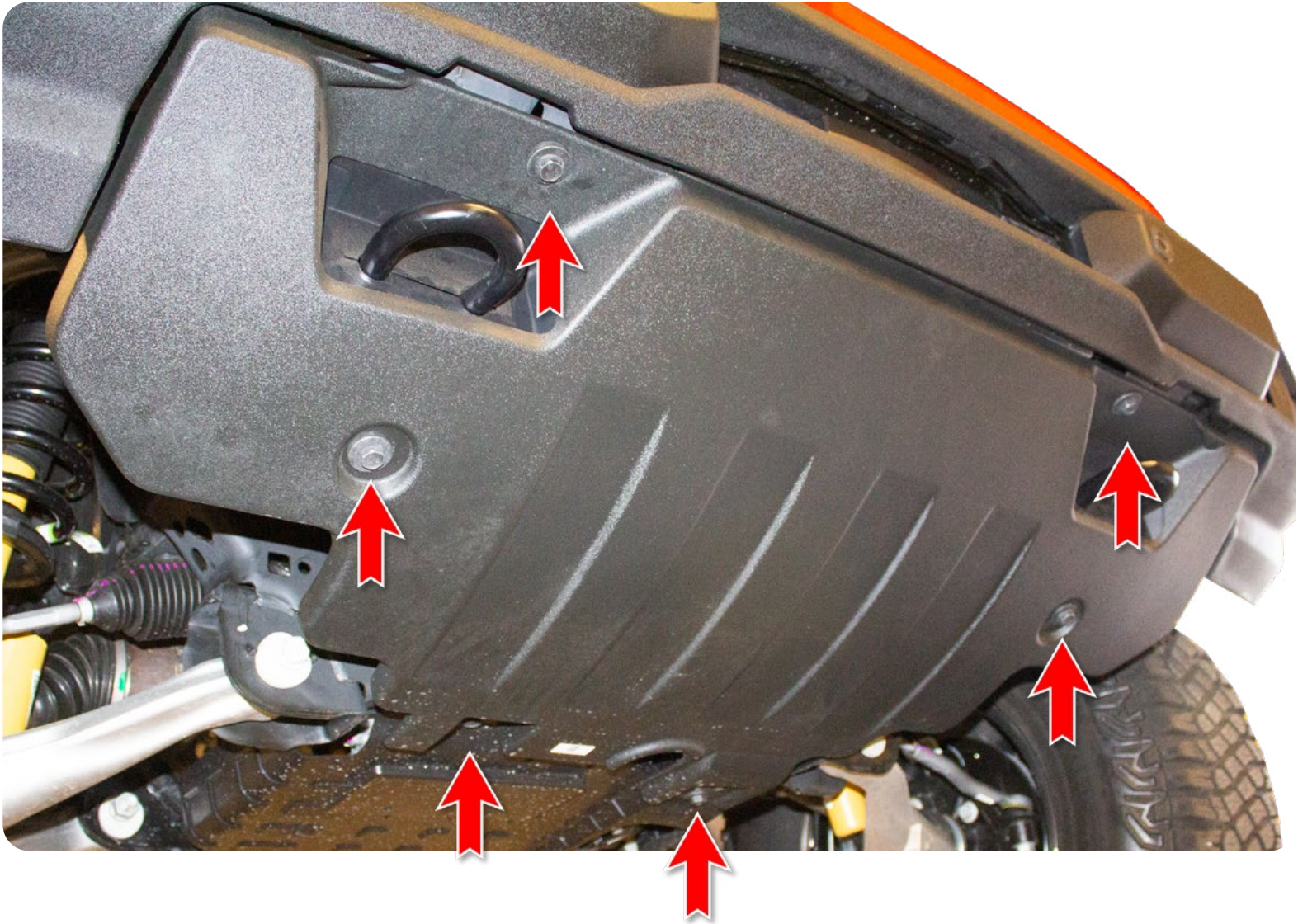
Reference this page throughout the install

KRAWLER FRONT BUMPER 21+/FORD BRONCO

REMOVAL

□ STEP 1

Remove the skid plate using a (15mm Socket). (Keep all of the OEM bolts for they will be used later in the install)



KRAWLER FRONT BUMPER 21+/FORD BRONCO

REMOVAL

□ STEP 2

Disconnect the main wiring harness located on the driver side of the Bronco (Found next to the headlight, up in the corner)



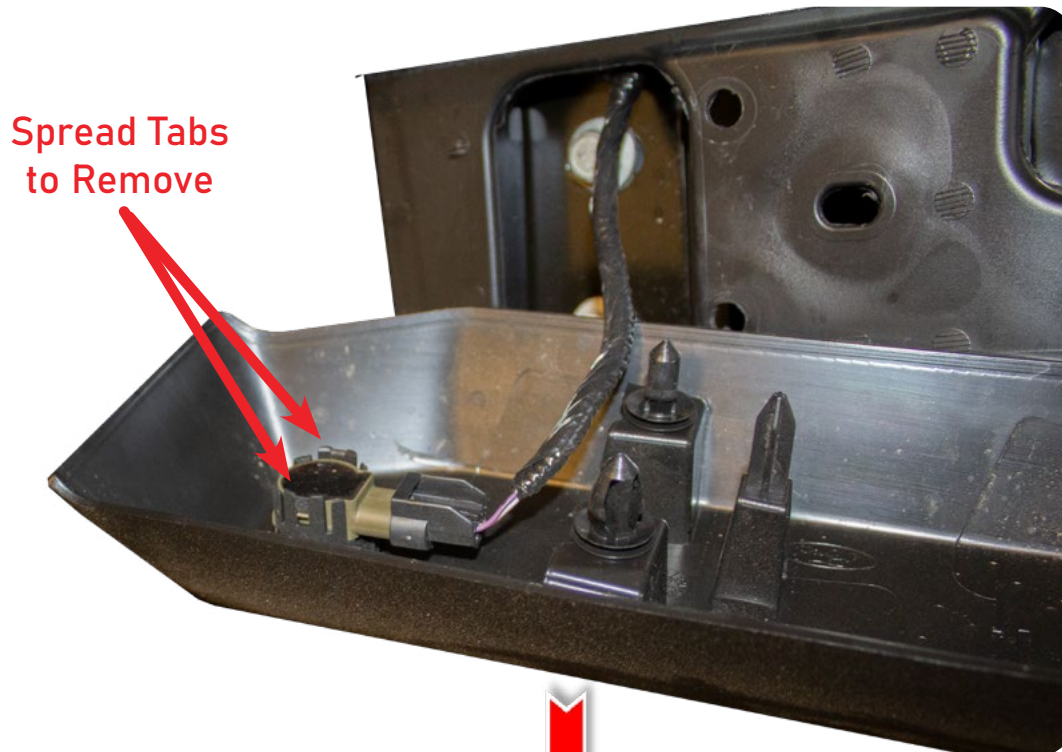
PLASTIC BUMPER

KRAWLER FRONT BUMPER
21+/FORD BRONCO

REMOVAL

□ STEP 3

Pull off the cover on each side of the bumper and unplug the sensors by spreading the sensor bezel tabs apart, which will release the tension and allow you to easily push back the sensors. (Make sure to keep track of the position/orientation of the parking sensors so that you can install them in the same position/orientation on your new bumper)



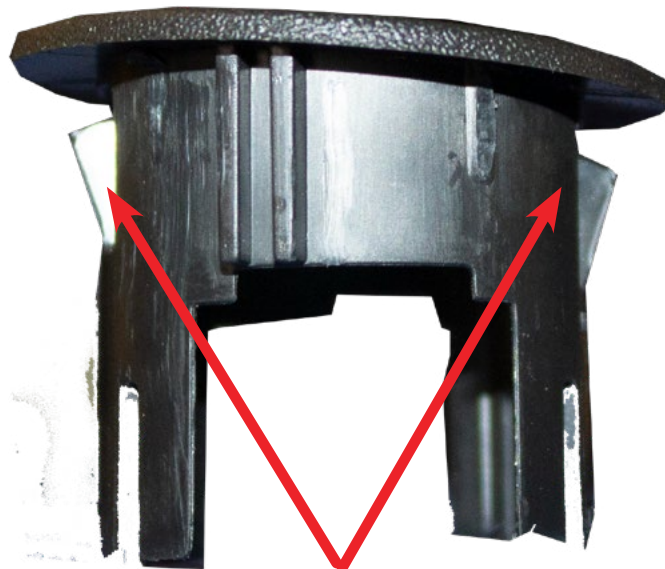
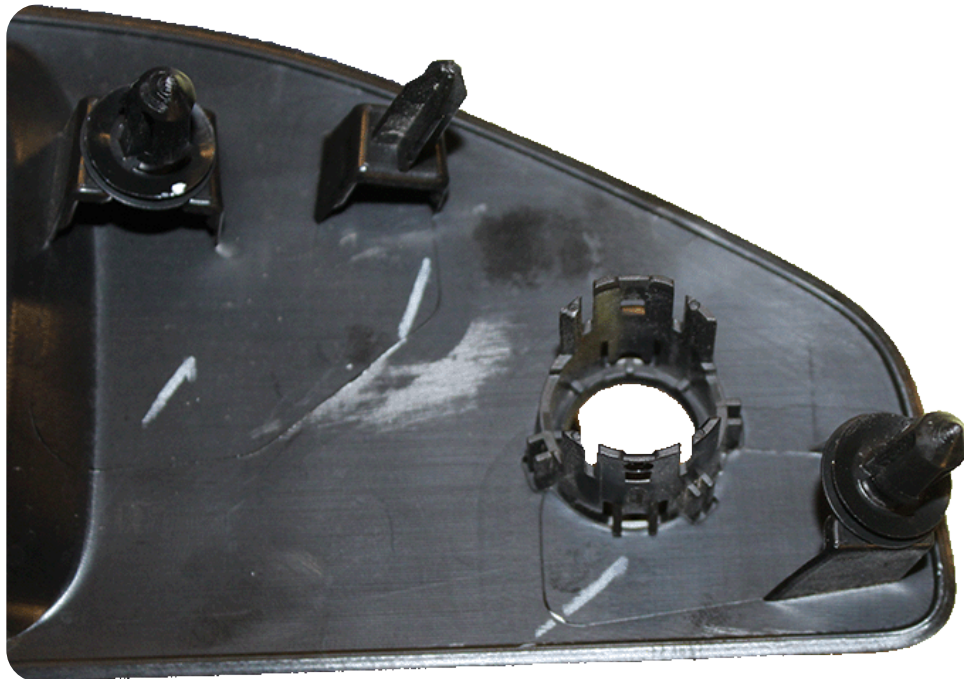
PLASTIC BUMPER

KRAWLER FRONT BUMPER
21+/FORD BRONCO

REMOVAL

□ STEP 4

After the sensor have been removed squeeze the black sensor bezel tabs together, which will allow them to pull forward off the bumper. Keep track of the position/orientation of each sensor bezel so that you can install them in the same position/orientation on your new bumper.



Squeeze Together

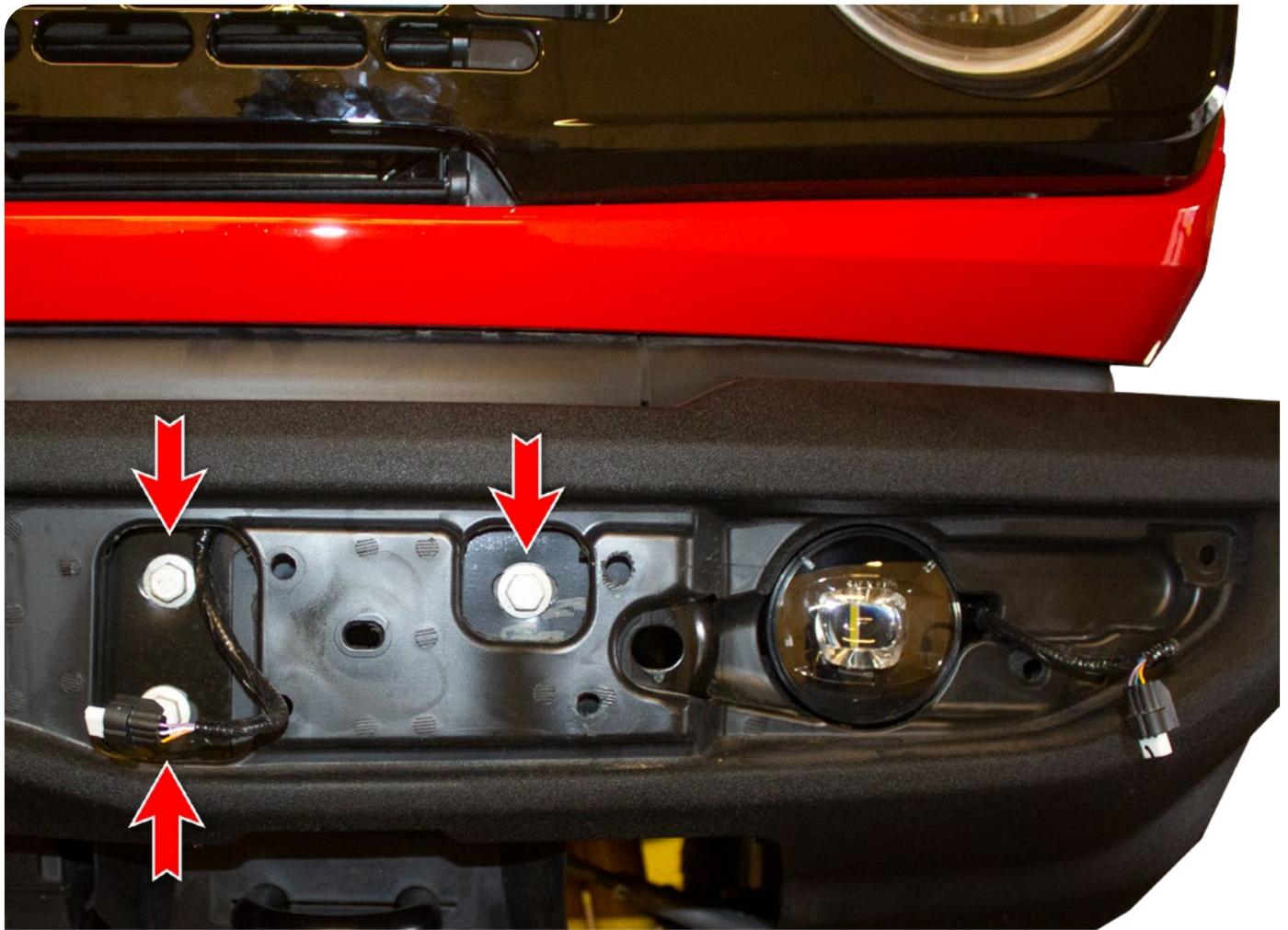
PLASTIC BUMPER

KRAWLER FRONT BUMPER
21+/FORD BRONCO

REMOVAL

□ STEP 5

Remove plastic cover then unbolt the three bolts that hold the OEM bumper in place with a (15mm socket).

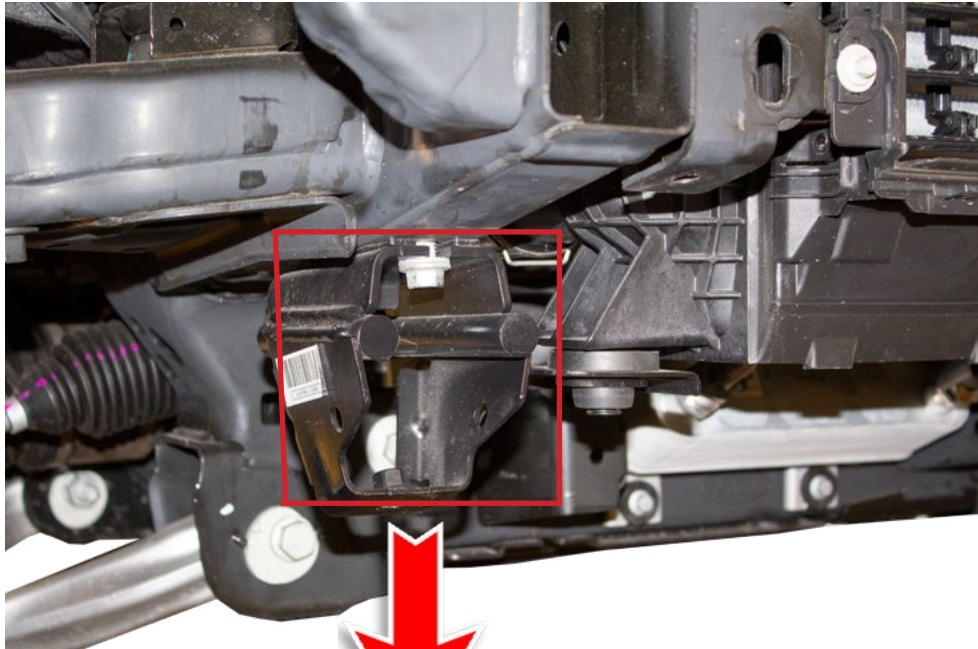


KRAWLER FRONT BUMPER 21+/FORD BRONCO

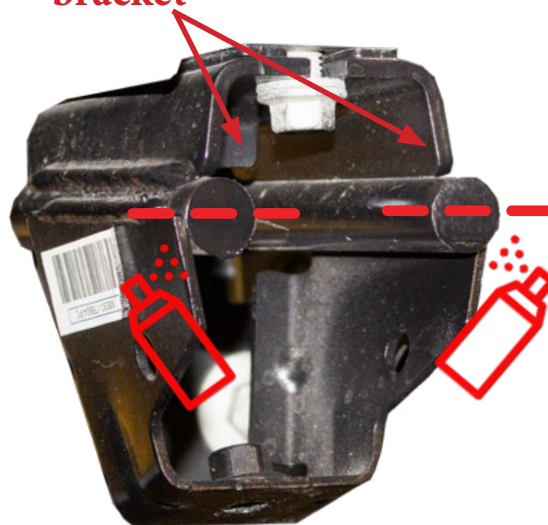
REMOVAL

□ STEP 6

After the OEM bumper has been removed cut the D-rings flush with the bracket to gain clearance for the ADD Krawler using a (grinder/cutoff wheel) and use (black spray paint) to prevent rust.



**Cut D-rings flush with
bracket**



PLASTIC BUMPER

KRAWLER FRONT BUMPER
21+/FORD BRONCO

REMOVAL

□ STEP 7

There is a metal plate held in place by eight bolts, four on each side. This plate needs to be removed to access the wiring harness, Then remove wiring harness from the OEM bumper by disconnecting the fog light, then pulling out all the tabs that secure the harness in place.



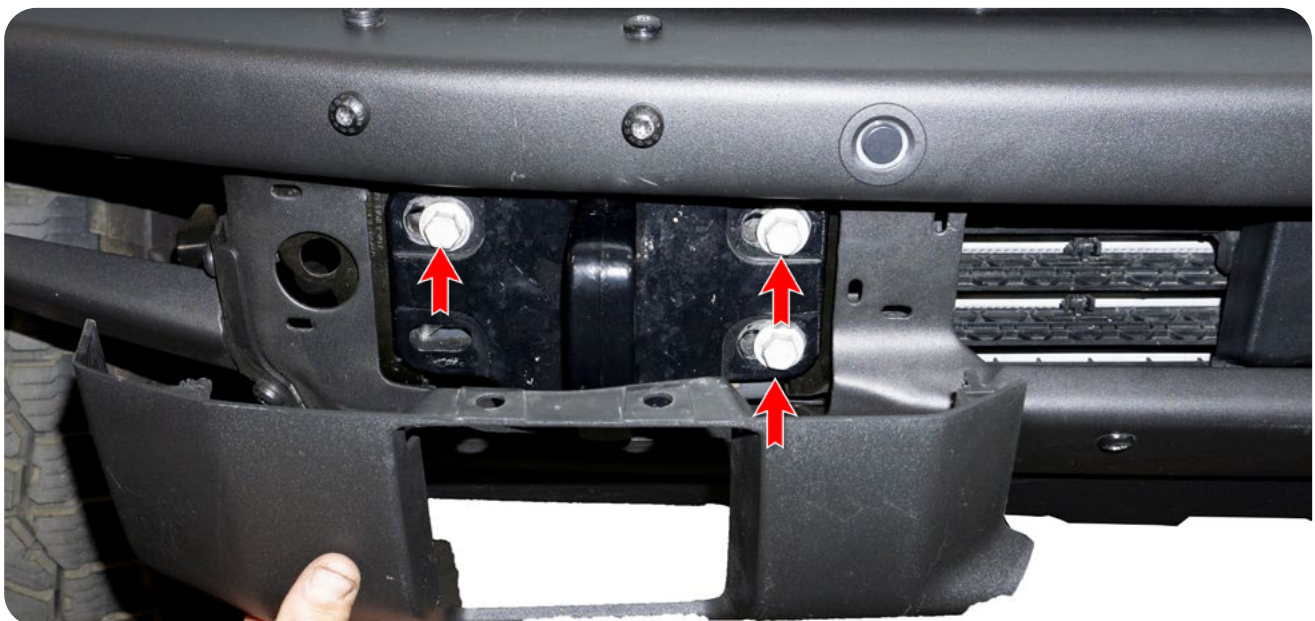
STEEL BUMPER

KRAWLER FRONT BUMPER 21+/FORD BRONCO

REMOVAL

□ STEP 8

Remove the four plastic clips shown below on each side using a (fastener removal tool). Next remove the six bolts, three on each side using a (15mm socket).

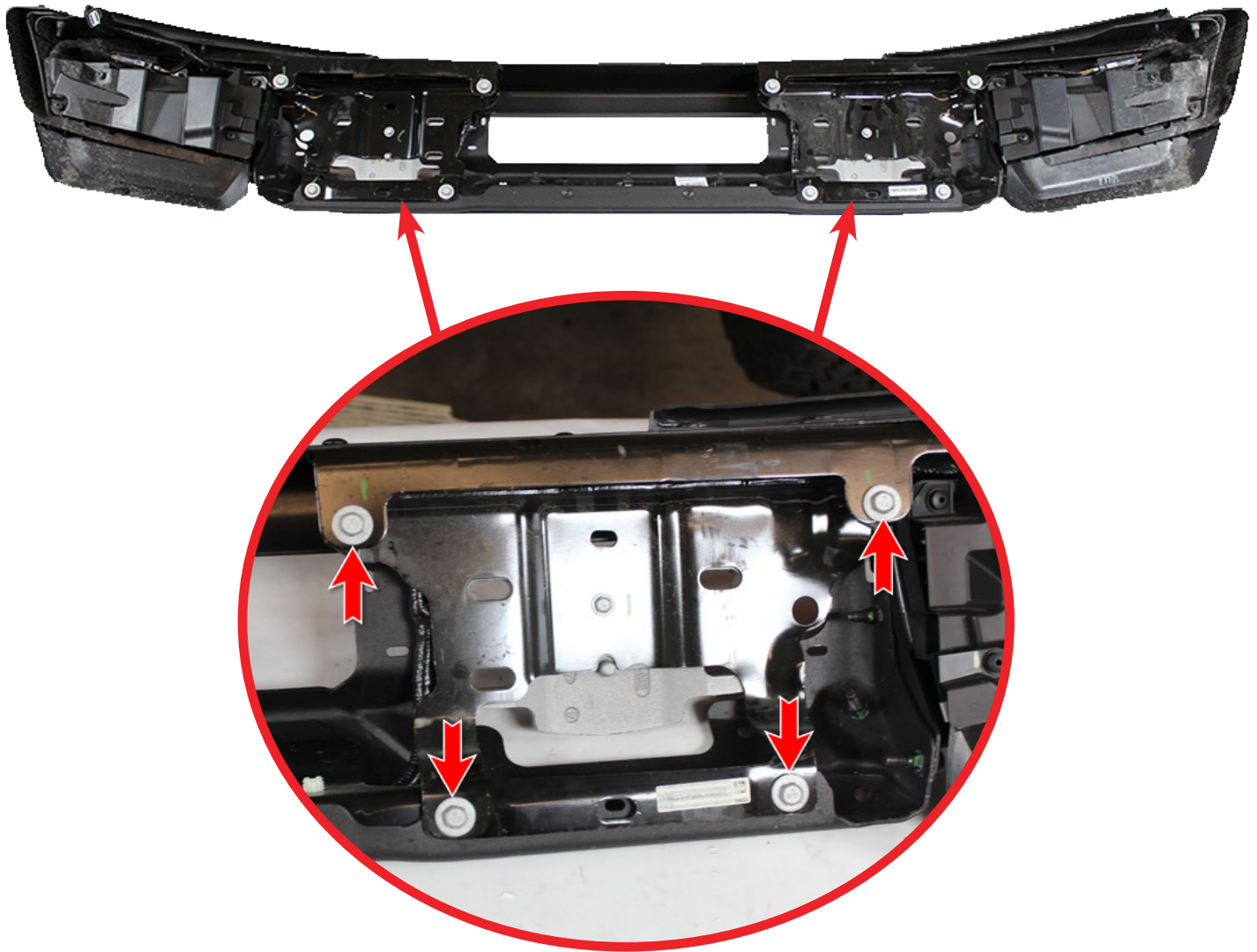


KRAWLER FRONT BUMPER 21+/FORD BRONCO

REMOVAL

□ STEP 9

Remove the tow hook brackets using a (13mm socket).



KRAWLER FRONT BUMPER 21+/FORD BRONCO

REMOVAL

□ STEP 10

Remove all of the front and top face bolts that are indicated below using a (T40).



KRAWLER FRONT BUMPER

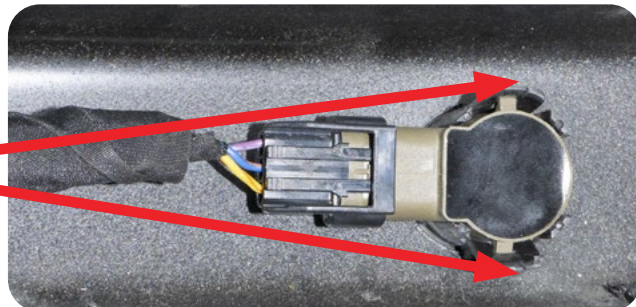
21+/FORD BRONCO

REMOVAL

□ STEP 11

You can now remove the wire harness by removing the sensors and sensor bezels by follow the images below. ****Remember the orientation for this will be important later in the install****

SPREAD THE TABS ON EACH SIDE OF THE SENSOR TO RELEASE IT AND PULL OUT



SQUEEZE TOGETHER ON THE INSIDE OF THE BUMPER THEN PUSH OUT



KRAWLER FRONT BUMPER 21+/FORD BRONCO

REMOVAL

□ STEP 12

Remove the mounting bracket plastic nuts located behind the frame horns. There are 2x on each side.

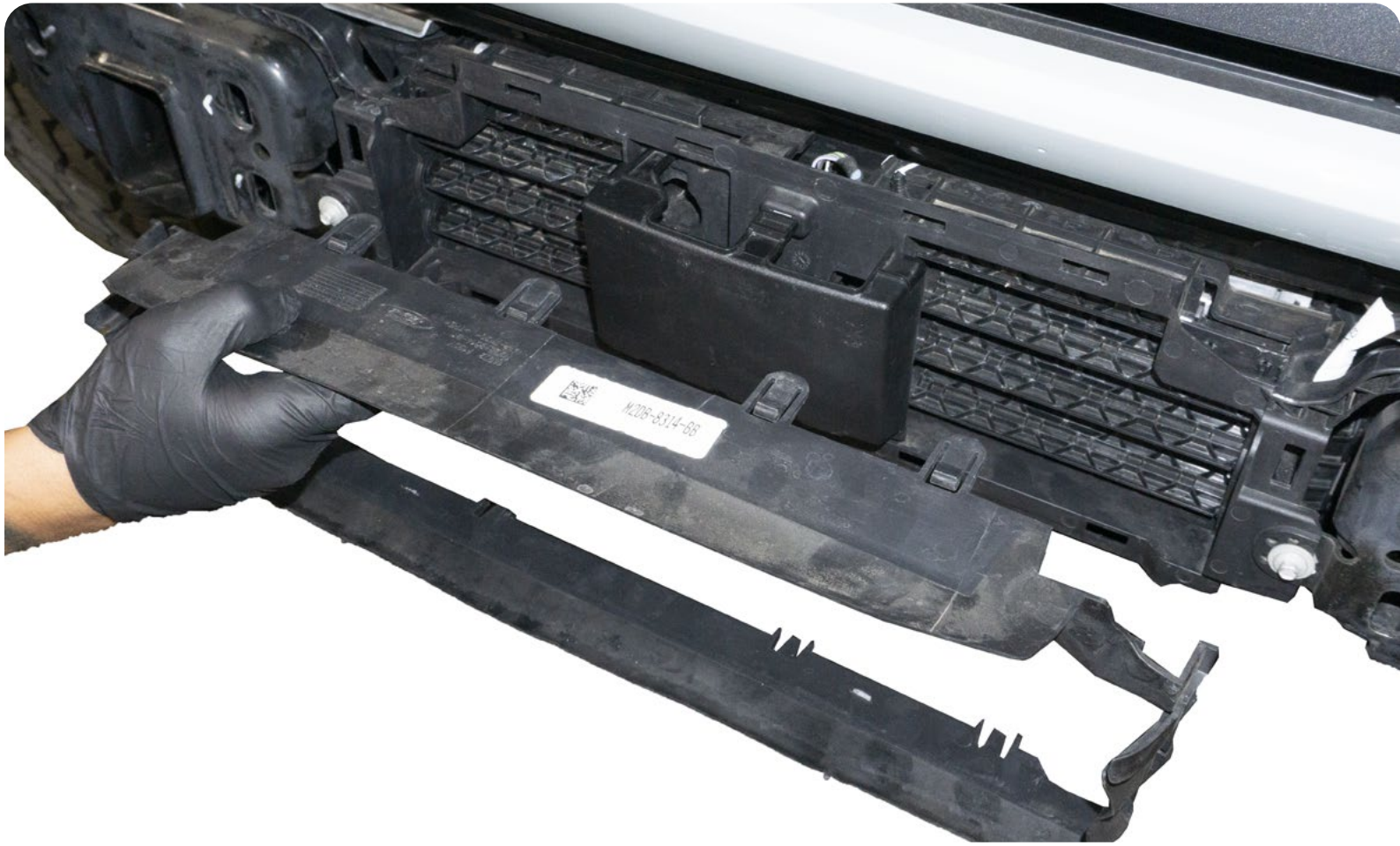


KRAWLER FRONT BUMPER 21+/FORD BRONCO

REMOVAL

STEP 13

Remove the intercooler shroud by pulling outward.



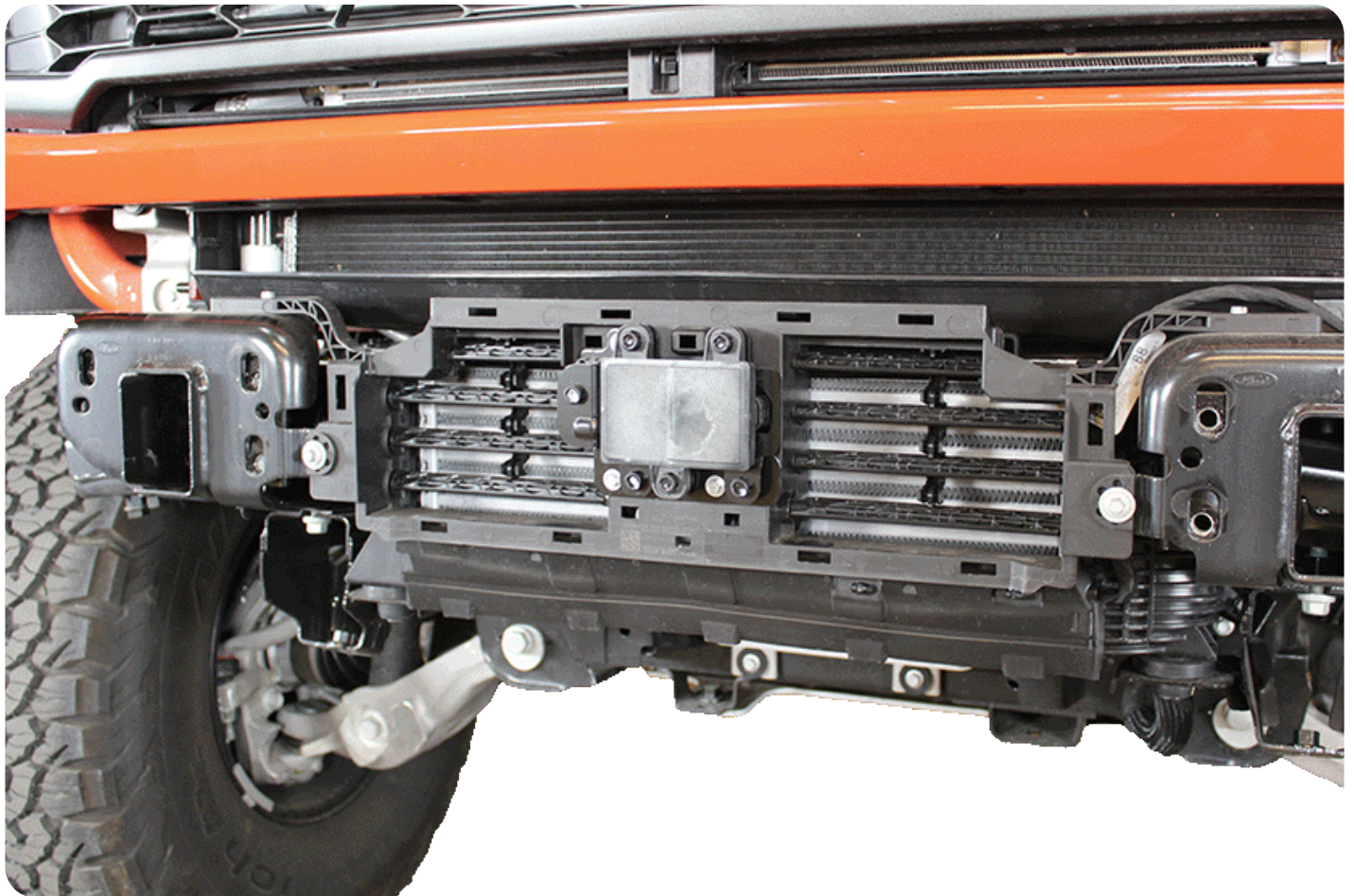
KRAWLER FRONT BUMPER 21+/FORD BRONCO

REMOVAL

□ STEP 14

Follow the ACC install guide before continuing with the install.

<https://cdn.shopify.com/s/files/1/0627/4508/4140/files/2021-ford-bronco-cruise-control-install.pdf?v=1654182892>

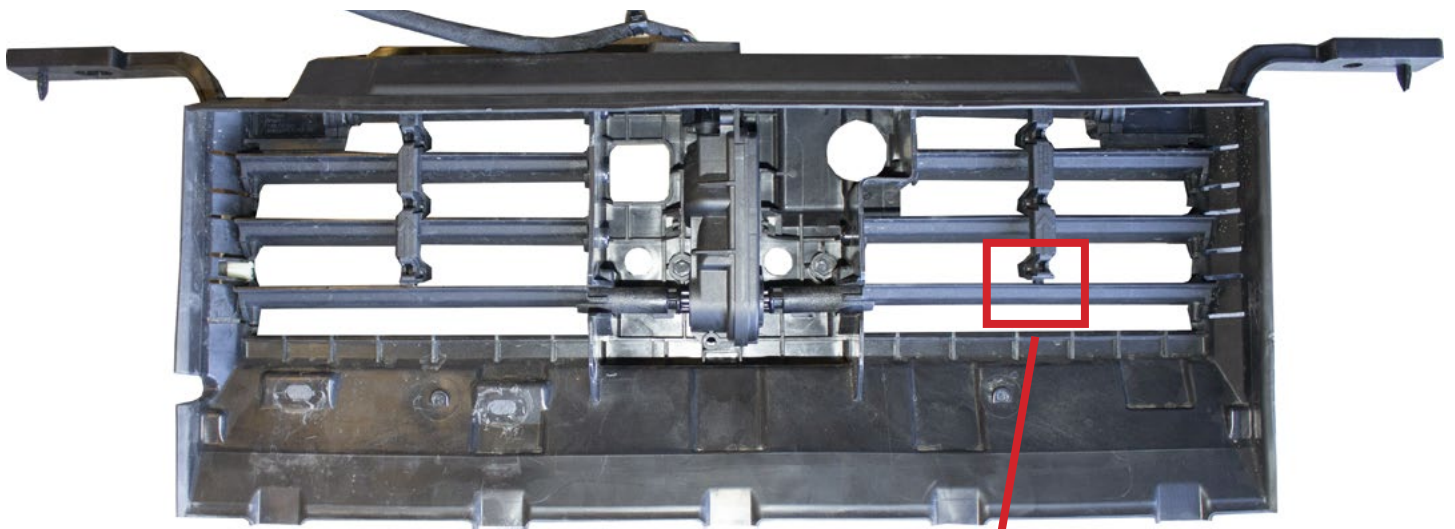


KRAWLER FRONT BUMPER 21+ / FORD BRONCO

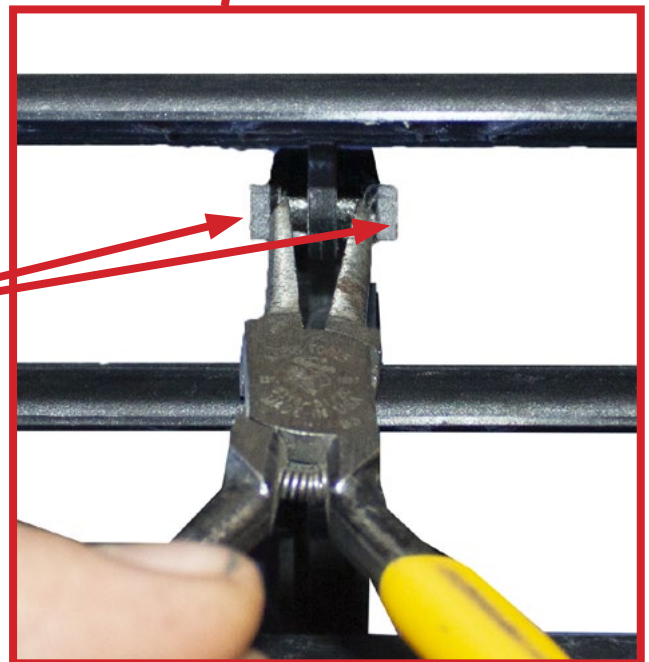
REMOVAL

□ STEP 15

Use a pair of needle nose pliers to spread open the tabs on each side to pop out the fin that is attached to the shutter motor.



**Spread The Tabs Open To
Push Out Fin**



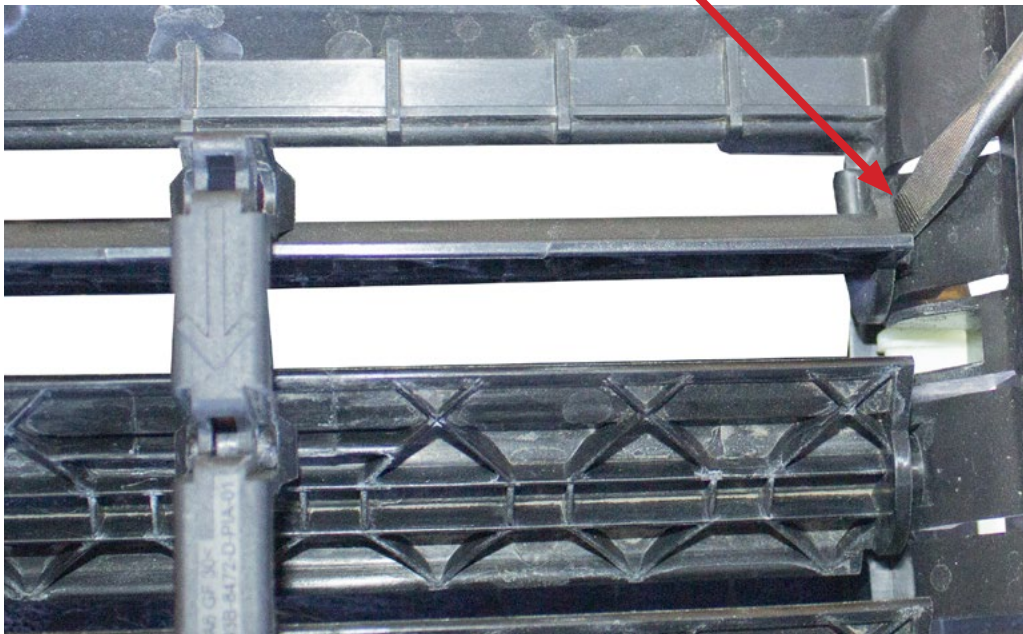
KRAWLER FRONT BUMPER 21+/FORD BRONCO

REMOVAL

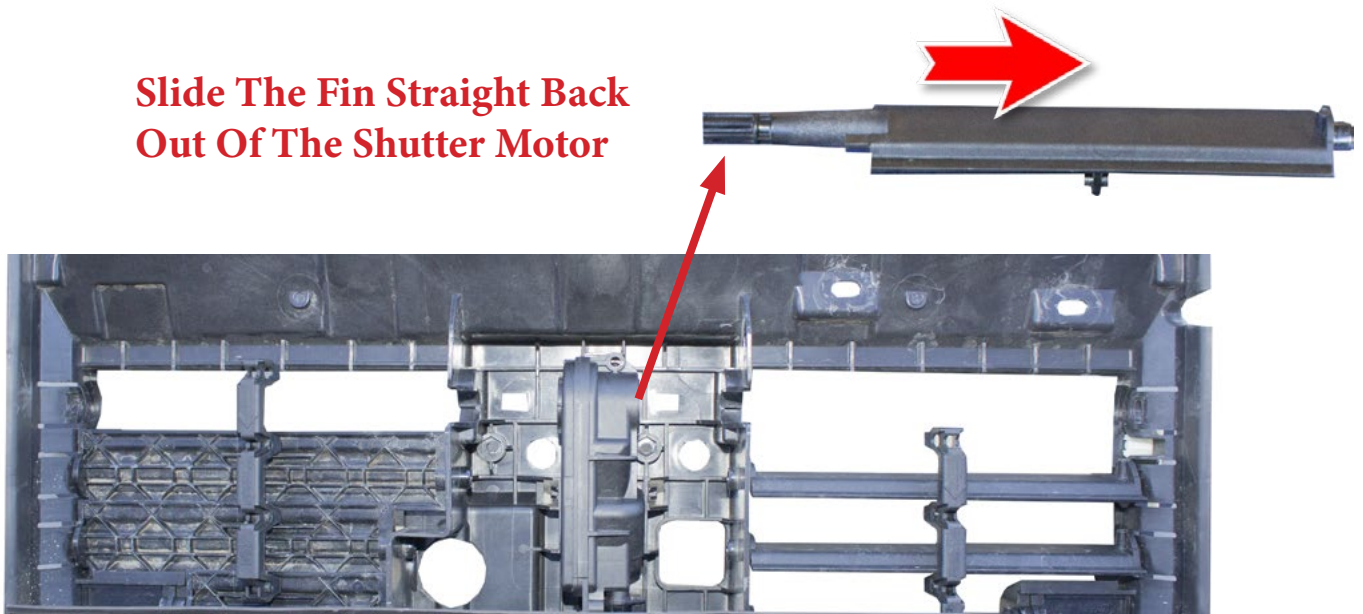
□ STEP 16

Use a flat head screw driver and pry out the fin from the plastic side piece that holds it in place. Then pull it directly out from the shutter motor.

Pry Out Of The Plastic Guard



**Slide The Fin Straight Back
Out Of The Shutter Motor**

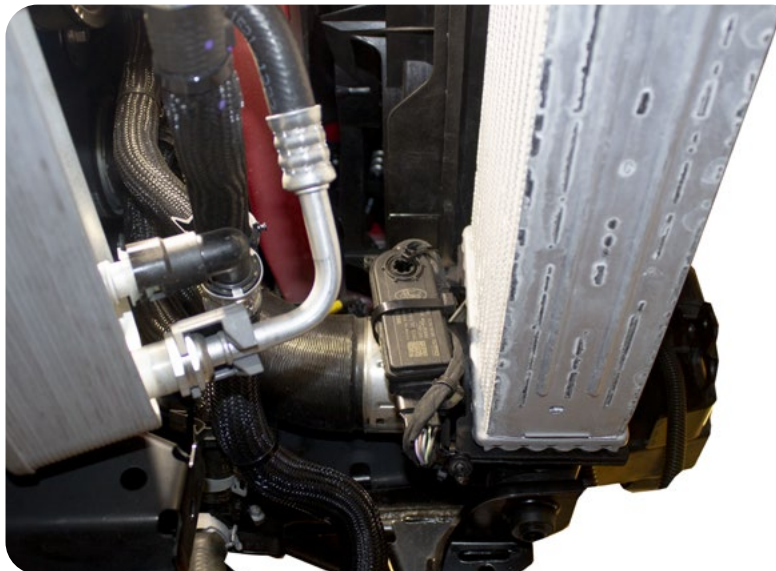
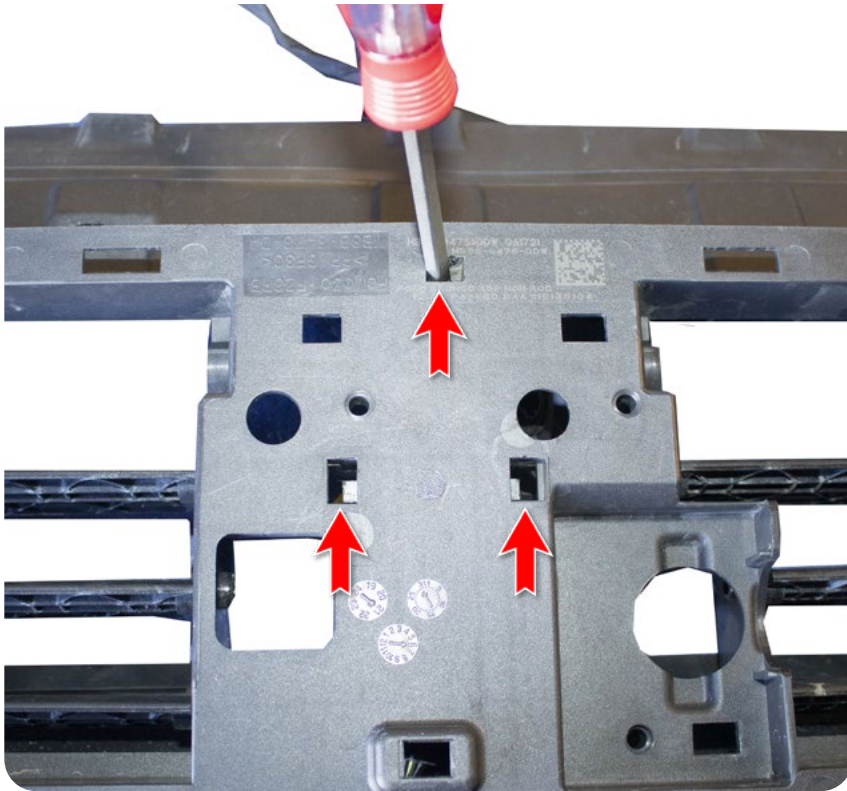


KRAWLER FRONT BUMPER 21+/**FORD BRONCO**

REMOVAL

□ STEP 17

Use a flat head screw driver and press into the tabs that hold the shutter motor into place. There are three spots that need to be pressed down with the flat head to break it loose. Start with the top then pry the bottom out last. After the shutter motor has been released disconnect the plug and pull the wiring through the opening. After the shutter motor has been taken out from the plastic guard, find a spot on the bronco to zip tie it in place.



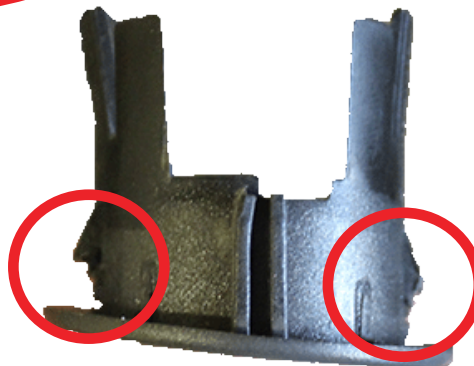
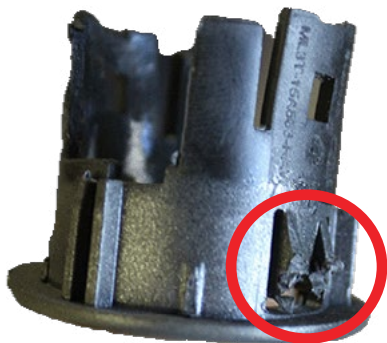
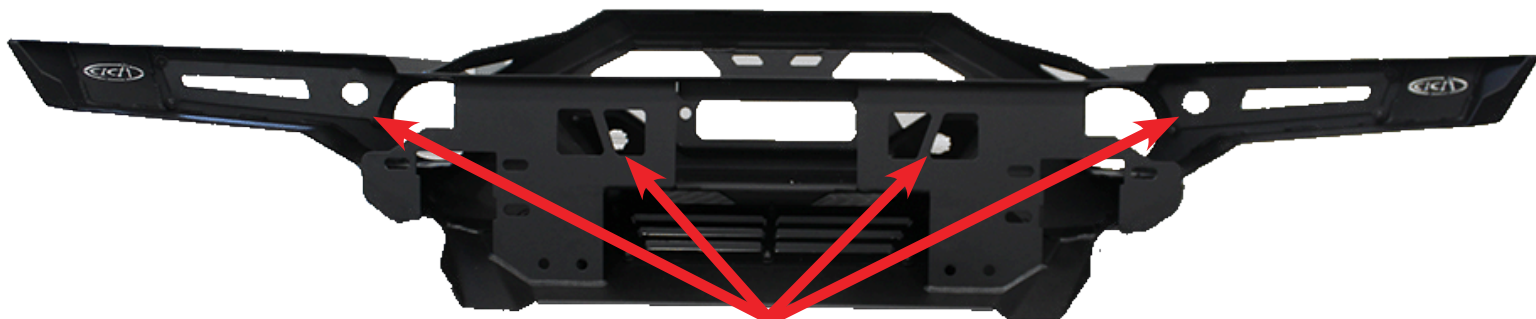
KRAWLER FRONT BUMPER

21+ / FORD BRONCO

INSTALL

□ STEP 18

Install the wiring harness and sensor bezels in the same orientation from which they were removed.
****If the bezels do not click into place you may have to trim the tabs to match the thickness of the bumper as shown below****



KRAWLER FRONT BUMPER 21+/FORD BRONCO

INSTALL

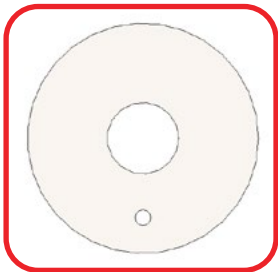
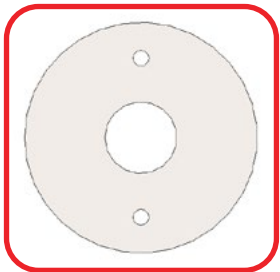
□ STEP 19

Use the provided spacers **B**, **C** to adjust the height of your lights to be centered with the light cut out on the front of the bumper.



B.

C.



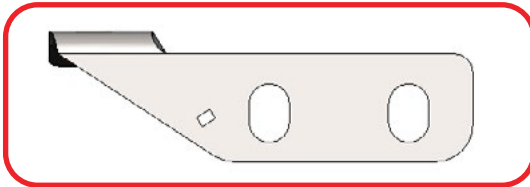
KRAWLER FRONT BUMPER 21+/FORD BRONCO

INSTALL

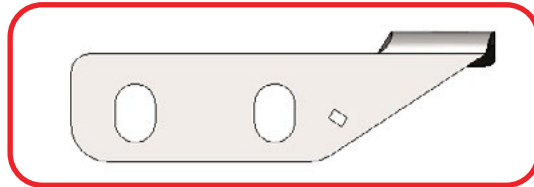
□ STEP 20

Install the bottom support brackets **D**, **E** with the stock bolts removed from **step 1** using a (15mm socket). (ensure that they are facing the direction as shown below and keep them loose enough to adjust until the end of the install)

D.



E.

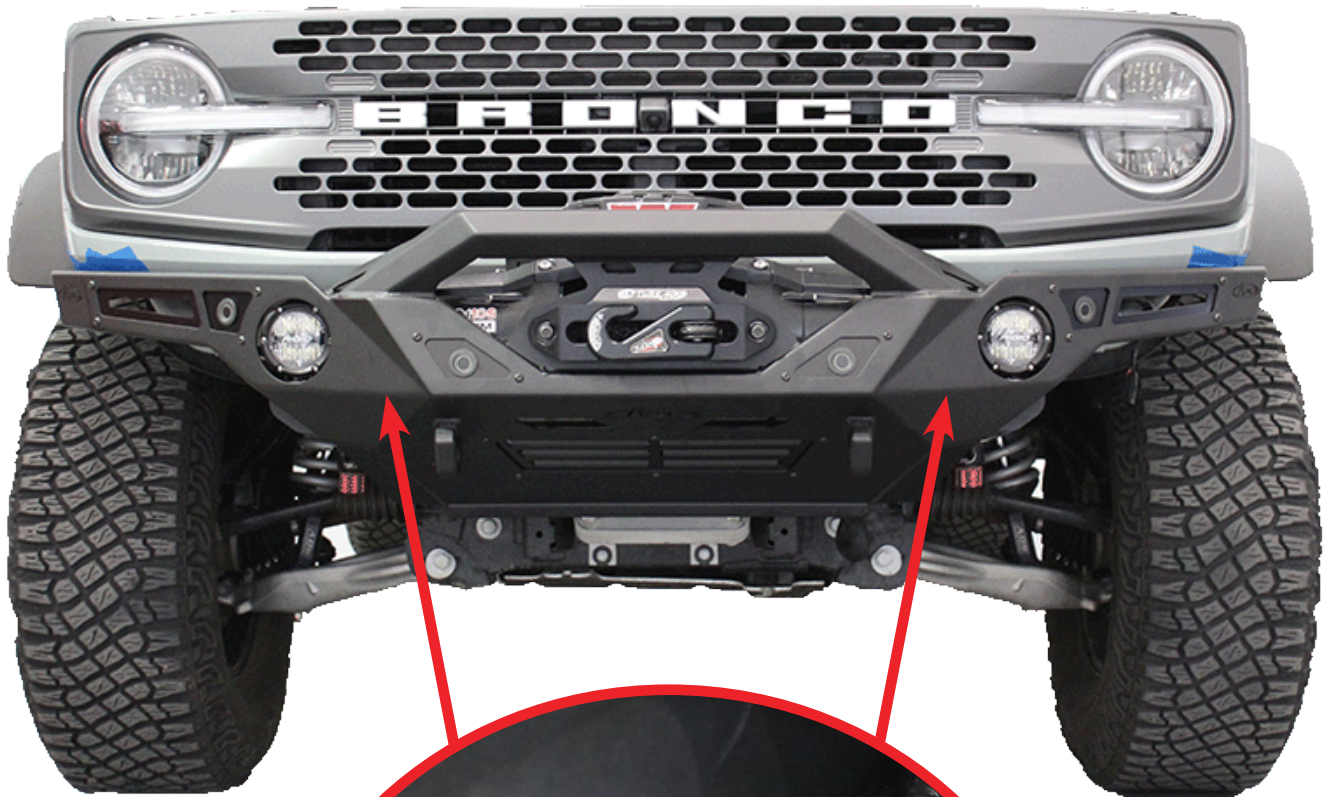


KRAWLER FRONT BUMPER 21+/FORD BRONCO

INSTALL

□ STEP 21

Install the bumper with the provided hardware **A**, **A1**, **A2** using a (3/4 wrench) and or a (3/4 socket).



A.

A1.

A2.

KRAWLER FRONT BUMPER 21+ / FORD BRONCO

INSTALL

□ STEP 22

Install your fair-lead before installing your winch. ****If you are installing a ADD fair-lead install the bolt with the nuts facing the outside as shown below using a (3/4 deep socket) and a (5/16 allen)****



KRAWLER FRONT BUMPER 21+/FORD BRONCO

INSTALL

□ STEP 23

Install your winch through the cutouts located to the left and right of the ADD logo underneath the fair-lead and reaching your hand behind the bumper.

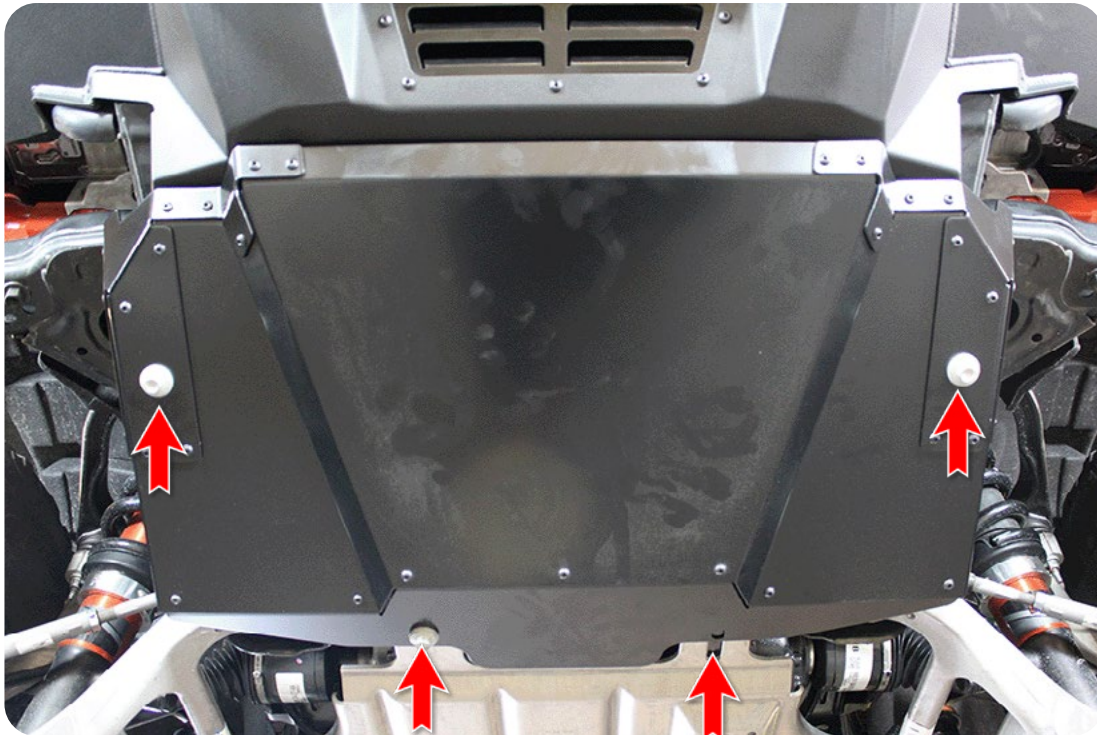


KRAWLER FRONT BUMPER 21+/FORD BRONCO

INSTALL

□ STEP 24

Install the skid plate with the same mounting bolts removed from **step 1** using a (15mm socket).



KRAWLER FRONT BUMPER 21+/FORD BRONCO

FINAL

STEP 25

Stand back and enjoy your new ADD Krawler™ Front Bumper.

Check and re-tighten, if needed, all mounting bolts after 100 miles and periodically thereafter.



THIS PRODUCT IS PROTECTED BY ONE OR MORE U.S. PATENTS
WWW.ADDICTIVEDESERTDESIGNS.COM/PATENTS

FOR ADDITIONAL SUPPORT OR TECHNICAL QUESTIONS,
PLEASE CALL 480-671-0820 OR
EMAIL INFO@ADDICTIVEDESERTDESIGNS.COM