

# INSTALLATION GUIDE



## SAFETY

**THE SAFETY OF YOU AND OTHERS IS VERY IMPORTANT TO US!**

In order to minimize this risk and make an informed decision about safety, it is important that you carefully read and follow the installation instructions we have provided.

We urge you to use your own good judgment and allow plenty of time for install.

## HAZARD CHECKLIST

- Always wear personal protective equipment (PPE) such as: protective eye wear, gloves, close toed shoes, etc.
- We recommend that you use a certified mechanic or shop for professional installation.
- Always set emergency brakes on vehicle and use tire blocks to ensure vehicle stabilization.
- Use caution when lifting, we recommend the use of equipment to help lift bumpers into place.
- Use caution when using power tools such as air ratchet, etc.
- Take caution when installing wiring.
- Perform regular inspections of hardware, bolts, brackets, etc.
- Rigid light brackets are specifically designed to fit Rigid lights, we do not guarantee off brand fitment.
- Our winch mount is designed for Warn and Superwinch products. We do not guarantee off brand fitment.

## USE & RISK

Bodyguard Products LLC is not responsible for damage to our products, or other subsequent damage that might occur, as a result of misuse or improper installation. While we do manufacture products that appear stronger than factory parts, our products should not be viewed or relied upon as life-saving devices in the event of a collision or rollover. We make no claims relating to airbag compatibility, crashworthiness, or sturdiness. It is the customer's responsibility to check with the vehicle manufacturer or auto dealer regarding airbag compatibility and automobile manufacturer's warranty before installing our products.

# PREPARATION

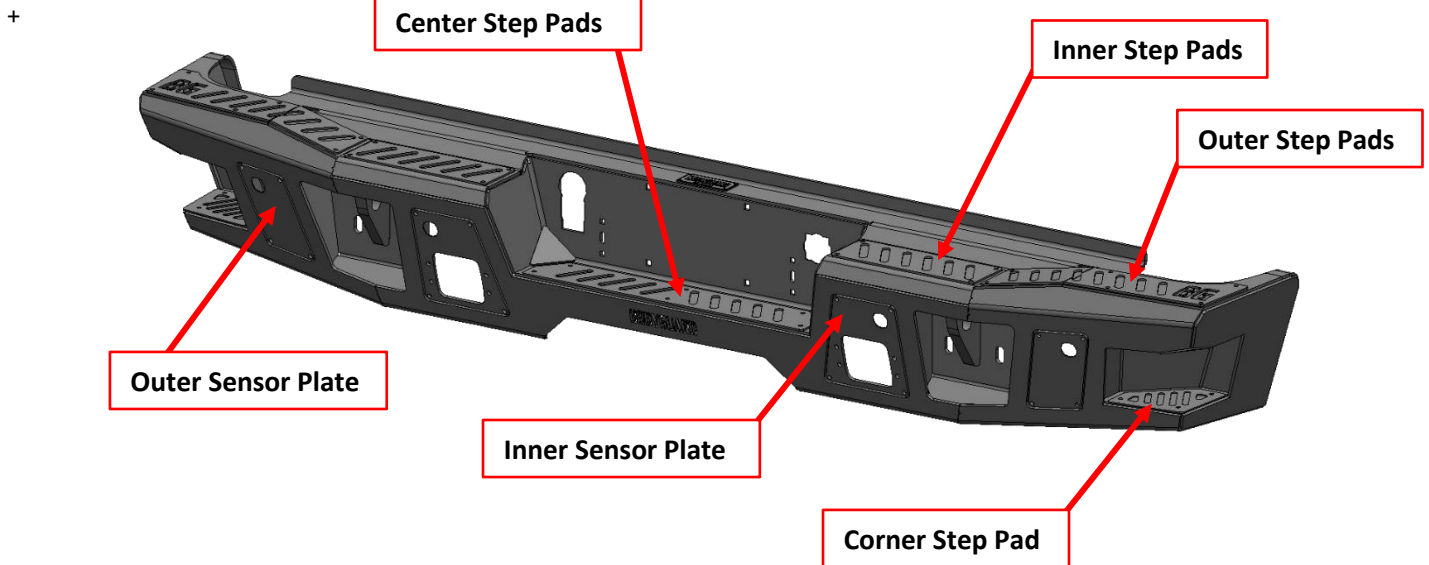
- Ensure personal safety by checking for hazards and identifying risks.
- Check for correct hardware.
- Check for tools needed.
- Use either foam or tape on fenders to prevent scratches to the truck when installing your bumper.
- Please allow approximately 3-4 hours for installation.
- Disconnect battery.

## TOOLS

- 1** - Jack
- 2** - Safety Stands
- 2** - Wheel Chocks
- 1** - Wire Cutters & Wire Crimpers
- 1** - Small Pry Tool
- 1** - Tape measure
- 1** - Pliers
- 1** - Metric Wrench/Sockets – 7mm, 13mm, 18mm, 19mm, and 21mm
- 1** - Level

## BUMPER COMPONENTS

- 1** - Main Bumper Section
- 4** - Parking Sensor Plates
- 7** - Bumper Step Plates
- 2** - Bumper Frame Mounts
- 1** - Control Module Bracket
- 2** - Blind Spot Monitor Bracket



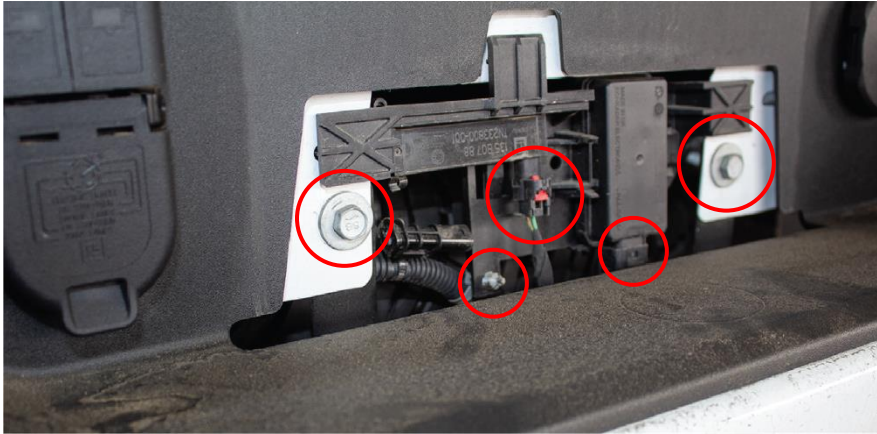
# HARDWARE

DO NOT SUBSTITUTE OR USE ANY OTHER  
HARDWARE OTHER THAN LISTED HERE.

<b>T1-HK-LPR</b>	<b>A2 Rear License Plate Kit</b>	<b>Qty</b>
	Plastic License Plate Nuts	4
	#14 x 5/8" Zinc License Plate Screw	4
	Plastic Wire Splices	4
	Tag Lights	2
	Tag Light Screws	4
	Plastic Clips For Tag Lights	4
<b>A2-HK-FRL19</b>	<b>A2 Rear Mount Kit 19+ Chevy 1500, 20+ H.D.</b>	<b>Qty</b>
	1/4-20 x 5/8 Long, Stainless Steel SBHCS	64
	1/4-20 Hex Grade 5 Serrated Flange Nut, Stainless Steel	50
	1/4-20 (.093-.126: Panel Range) Zinc Electroplate Spring Steel Cage Nut	14
	1/2"-13 x 1-1/2" Stainless Steel Hex Bolt	8
	1/2" Stainless Steel Flat Washer	8
	1/2-13 x 1-1/2 Long, Grade 8 HB Zinc-Yellow	4
	1/2" Washer, Grade 8 Zinc-Yellow	24
1/2"-13 Grade 8 Steel Serrated Flange Nut Zinc	12	

# BUMPER REMOVAL

1. Remove your license plate.
2. Disconnect the two connectors referenced in the picture below. Then, unclip the plastic clip pictured below
3. Use a 13mm socket to remove the two bolts that sit in the license plate area of the bumper



4. Disconnect the three connectors on the back side of the trailer plug. Then, remove the plug from the OEM bumper.

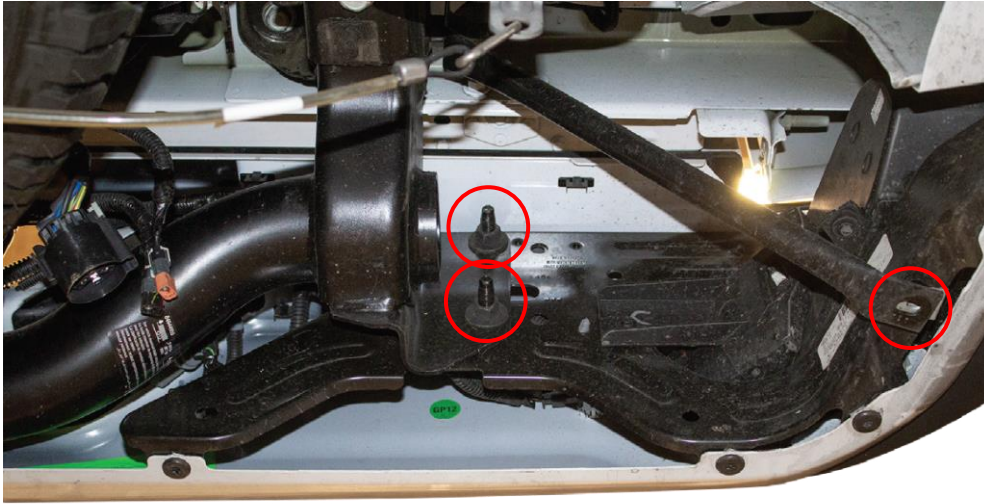


5. Unplug the main bumper connector. This connector is under the truck, on the passenger side, next to the spare tire.





- Using a 13mm socket, remove the bolt (1 per side) that holds the support bar to the bumper. Then, using an 18mm socket, remove the (x2) bumper mounting nuts (per side). Then, remove the bumper from the vehicle.



- Using a 21mm socket, remove the side support bar mounting nut. Then, remove this bar from the vehicle. Repeat this step on the other side of the vehicle.



## CONTROL MODULE BRACKET INSTALLATION *(If applicable)*



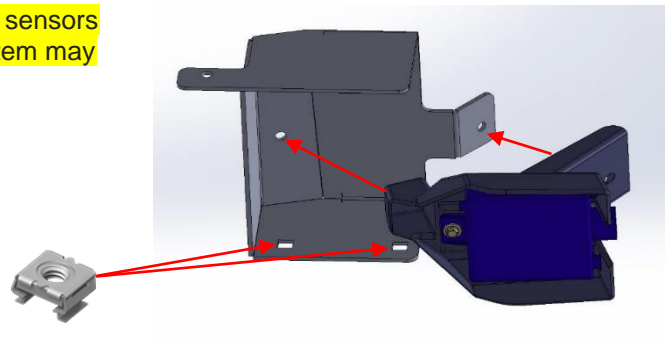
1. Some trucks will have a plastic bracket that is clipped to the factory bumper that holds two modules. We provide a bracket that allows these modules to be located in the same location after uninstalling the OEM bumper.
2. Install the two modules by clipping the one shown on the left in. Then bolting the one on the right down with 2x 1/4-20x5/8 long stainless-steel bolts and nuts.
3. Install the bracket to the factory receiver hitch by removing the clip nuts from the receiver hitch and installing the clip nuts to the new bracket. Then secure the bracket with factory hardware that was used to bolt the OEM bumper to the trailer hitch.

## FACTORY BUMPER REMOVAL NOTES

1. Remove factory harness from bumper and retain bumper harness, sensors, and sensor bezels. The factory sensor bezels will be reused in your Bodyguard bumper.

## BLIND SPOT MONITOR INSTALL

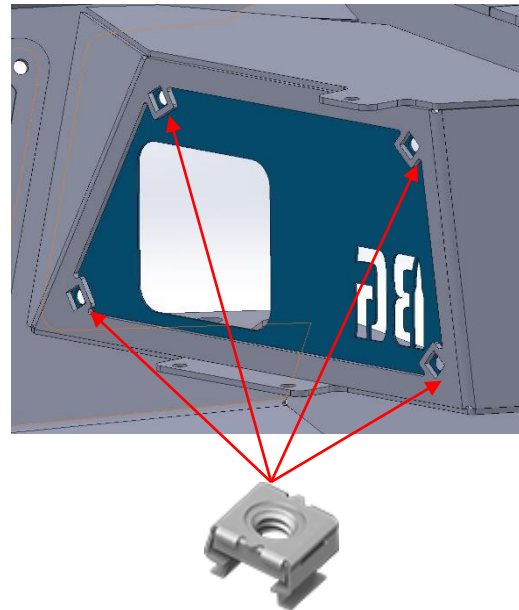
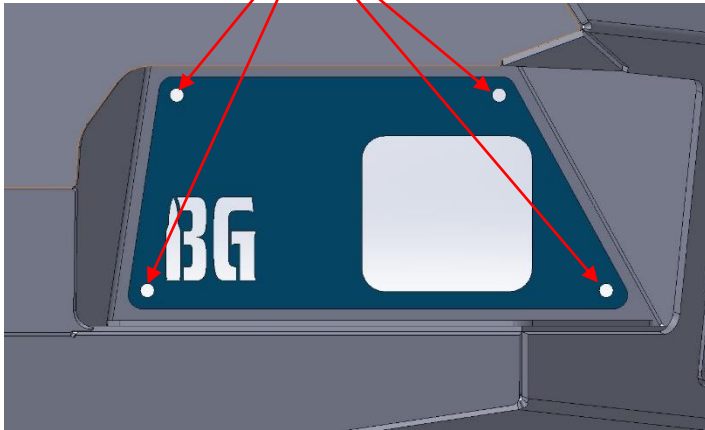
**Important:** This bumper accommodates the factory blind spot sensors however the side detection system / blind spot monitoring system may not operate properly.



1. Install provided Cage Nuts into square inserts on the BG Sensor Mounting Bracket. Then install the factory Blind Spot Sensor and Housing to the Mounting Bracket using 2x 1/4 - 20 X 5/16 Long screws and 2x 1/4 – 20 nuts.

Note: If your truck does not have the factory Blind Spot Monitor Sensor please skip to **step 3**.

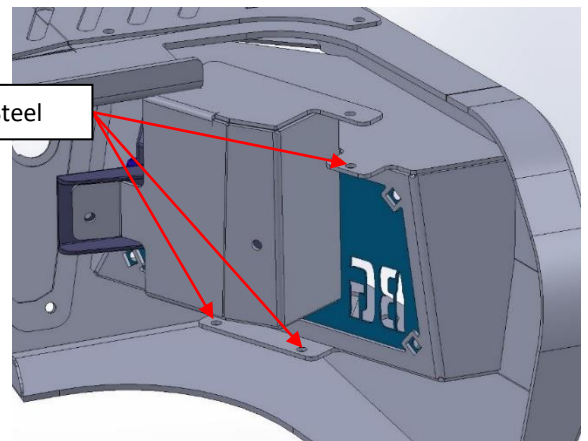
1/4-20 x 5/8 Long, Stainless Steel SBHCS



2. Install the Blind Spot Sensor assembly onto bumper using 3x 1/4-20x5/8 long stainless-steel bolt and 1x 1/4 – 20 nuts.

3. Install provided Cage Nuts into the 4 slots on the bumper.  
Then install the Sensor Cover Plate using 4x 1/4 – 20 x 5/16 long.

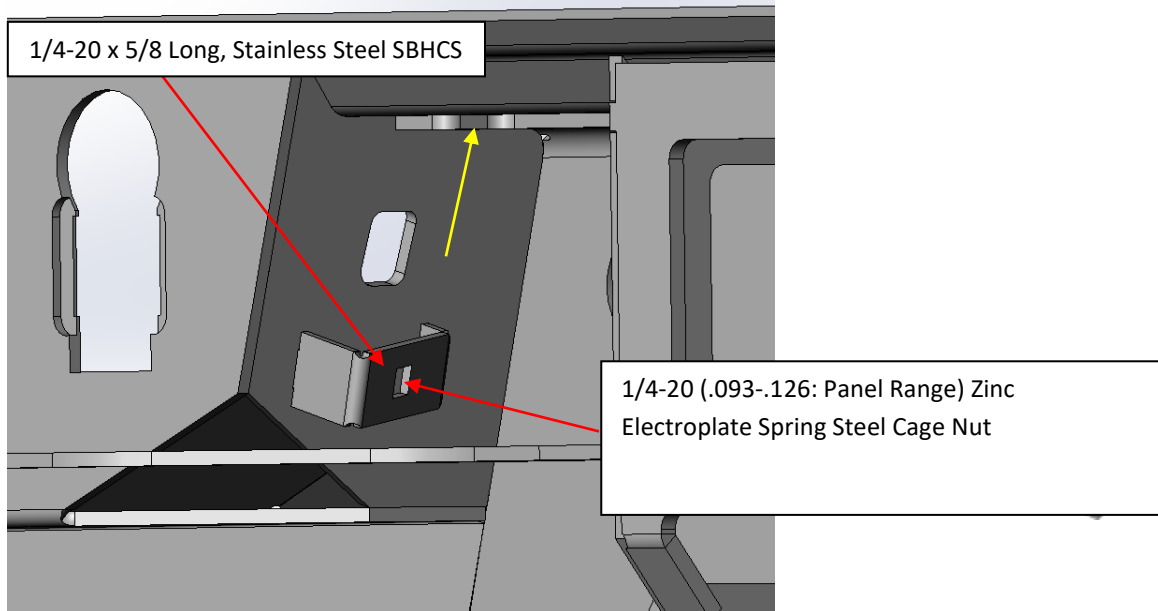
3X 1/4-20 x 5/8 Long, Stainless Steel



# BUMPER INSTALL

1. Install 1/4-20 (.093-.126: Panel Range) Zinc Electroplate Spring Steel Cage Nut in all square holes in the bumper and brackets. Next remove the factory tag lights from the factory bumper.

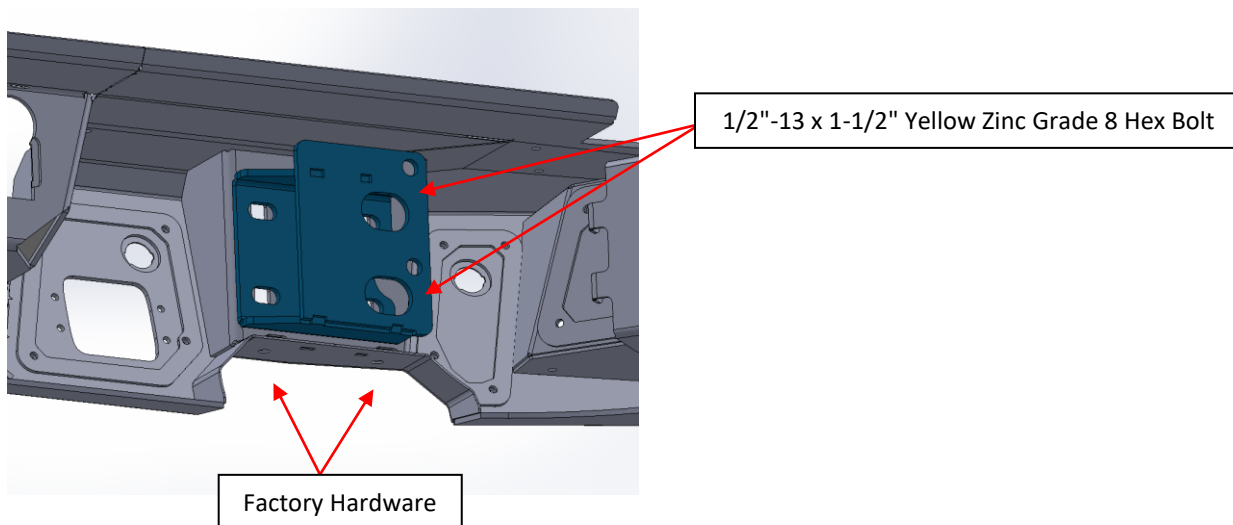
2. You will install the cage nut and secure the license plate light to the bumper using 1x 1/4-20x5/8 long stainless-steel bolt. The tag light will slide into a slot cutout on the top of the bumper shown by the yellow line



3. Next install the Exhaust piece to the bumper using factory hardware.

NOTE: 1500 Trucks Only

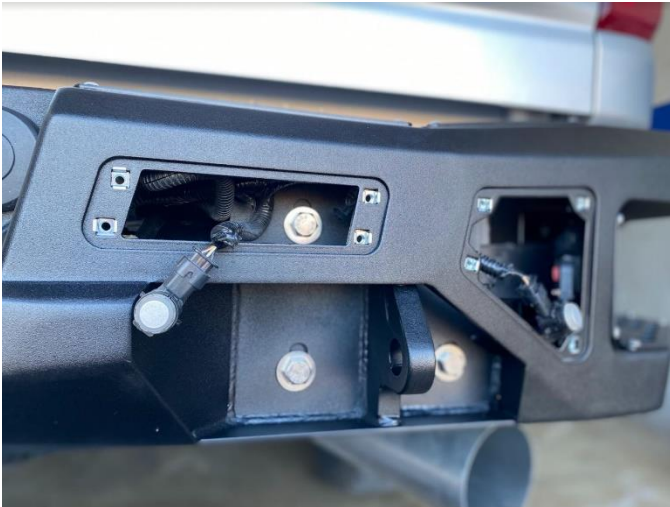
4. Install the bumper mounts to the frame using the supplied 1/2"-13 x 1-1/2" Yellow Zinc Grade 8 Hex Bolt (x4) and 1/2"-13 Grade 8 Steel Serrated Flange Nut Zinc (x4)



5. Bolt the bumper to the frame mounts using the supplied: 1/2"-13 x 1-1/2" Stainless Steel Hex Bolt (x8), 1/2" Stainless Steel Flat Washer(x8), and 1/2"-13 Grade 8 Steel Serrated Flange Nut Zinc (x8). Using a tape measure, adjust and level the bumper as necessary. Be sure to check tailgate clearance before tightening the bumper.



6. Loosely route the parking sensor harness through the bumper and make sure that the parking sensors plugs reach their designated locations. Unraveling the harness to gain extra length might be necessary.



7. Reuse factory sensor bezels in the Bodyguard sensor plates. Sensor plates are keyed accordingly to position your sensors in the correct orientation.



8. OPTIONAL: install rear reverse lights in their location using the light manufacturer hardware.

9. Clip in the parking sensors to the bezels and the sensor plates in their proper location, now install the sensor plates using the provided 1/4-20 x 5/8 Long, Stainless Steel SBHCS bolts (x16) hardware.

10. Now install the step pads using the provided 1/4-20 x 5/8 Long, Stainless Steel SBHCS bolts (x32) hardware.

11. Plug the 3 connectors into the back of the trailer plug. The plug will push in and clip into the Bodyguard bumper.

12. Reinstall the spare tire lock and tube, the tube will push in and clip into the Bodyguard bumper. Some extra force may be needed.

13. Reconnect the main harness on the passenger side and plug in the license plate, light connectors, blind spot monitor, and the 7way trailer connector.

14. OPTIONAL: Wire in the rear reverse lights as desired.

15. Secure all wiring and check for proper operation.

## FINISHING UP

- Be sure to check for tailgate clearance **BEFORE** tightening all hardware.
- Install shackles.
- Confirm that all hardware is tightened and everything is secure.
- Secure wiring harnesses for lights and sensors.
- Test all lighting and wiring before using vehicle (fog lights, sensors, etc.).
- Reconnect the battery.

## MAINTENANCE

- Periodically check that all hardware is tightened and that all wiring and connections are secure.
- Periodically check that all sensor plugs are secure.
- Routinely wash bumper to maintain the powder coat finish.

## FEEDBACK

We'd love to hear from you!

Please send your pictures, testimonials, comments, or suggestions to us by email at [info@bodyguardbumpers.com](mailto:info@bodyguardbumpers.com). We frequently use customer pictures for brochures and marketing materials, and we always welcome customer feedback to ensure quality improvements within our company. Thanks for your purchase; we appreciate your business very much!

Where **STRENGTH** Meets *Style!*™



@BodyguardBumpers