



Installation Instructions

Premium Front Sensor Bumper

Product Number: F3850, F3851, F3852
Application: 2016 CHEVY 1500

SAFETY

Your safety and the safety of others is very important.

- In order to help you make informed decisions about safety, we have provided installation instructions and other information.
 - These instructions alert you to potential hazards that could hurt you or others.
 - Please do a job safety analysis (JSA) before each task to identify potential hazards for your situation and remove/protect against them.
 - You must use your own good judgment, and take your time.
- Read and understand all safety precautions and instructions before installing this product.

THIS PRODUCT IS FOR OFFROAD USE ONLY. ALL LIABILITY FOR INSTALLATION AND USE RESTS WITH THE OWNER.

CARELESS INSTALLATION AND OPERATION CAN RESULT IN SERIOUS INJURY OR EQUIPMENT DAMAGE.

SENSORS FIELD OF VIEW WILL BE ALTERED WITH USE OF THE REPLACEMENT BUMPER.

Injury hazard

Failure to observe these instructions could lead to severe injury or death.

- Always remove jewelry and wear eye protection.
- Always use extreme caution when jacking up a vehicle for work. Set emergency brake and use tire blocks. Locate and use the vehicle manufacturers designated lifting points. Use jack stands.
- Always use appropriate and adequate care in lifting components into place.
- Always insure components will remain secure during installation and operation.
- Always wear safety glasses when installing this kit. A drilling operation will cause flying metal chips. Flying chips can cause serious eye injury.
- Always use extreme caution when drilling on a vehicle. Thoroughly inspect the area to be drilled (on both sides of material) prior to drilling, and relocate any objects that may be damaged.
- Always use extreme caution when cutting and trimming during fitting.
- Always tighten all nuts and bolts securely per installation instructions.
- Always route electrical cables carefully. Avoid moving parts, components that become hot and rough or sharp edges.
- Always insulate and protect all exposed wiring and electrical terminals.
- Always perform regular inspections and maintenance on mounts and related hardware.





Installation Instructions

Premium Front Sensor Bumper

Product Number: F3850, F3851, F3852

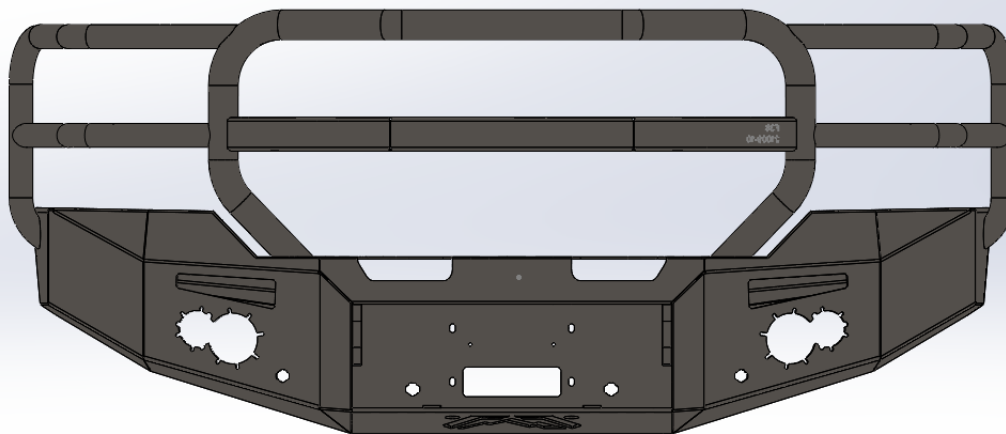
Application: 2016 CHEVY 1500

I. Overview

Congratulations on your new purchase of the industries' best and most stylish front bumper available for the 2014 Chevy 1500! This bumper has been engineered for strength while keeping the weight down.

Your front bumper designed in 3-D from digitized data, CNC laser cut, fabricated, and powder coated... all in the U.S.A.

Enjoy the fit and finish of a quality CHEVY 1500 Front Sensor Bumper from Fab Fours Inc.





Installation Instructions

Premium Front Sensor Bumper

Product Number: F3850, F3851, F3852
Application: 2016 CHEVY 1500

Parts List

- F385X replacement bumper
- H315X-HW fastener kit
- HDLA-HW
- 4 Stud Plates
- Light Kitting [i.e. 20090(2), 61349(2), 61350(2), 20318-08(1), 20318-09(1)]
- Instruction Manual

Tools Required

- Socket Wrench with Extension (Ratcheting wrenches may also be convenient)
- 7mm , 15mm , 18mm, 19mm, 3/4" Sockets and Box End Wrenches
- T15 torx
- Flat Head Screw Drivers
- Floor Jack and wood block.
- Panel clip removal tool ('Christmas tree fastener removal tool')

I. Removal of OEM Bumper

Note: Save all OEM parts until installation is complete!

- A. Open hood and locate push pins on radiator cover. Using a panel clip removal tool, pull the head of the push pins up, remove push pin and lift radiator cover off. This will allow access to top Grille bolts (Ref. Figure 1).





Installation Instructions

Premium Front Sensor Bumper

Product Number: F3850, F3851, F3852

Application: 2016 CHEVY 1500



Figure 1

- B.** Remove the fasteners connecting the grille to the frame. 4x15mm bolts, indicated by the red SQUARES, are located at the top of the grill. At this point 6 clips, indicated by red circles, are holding the grill in place. Starting around the center of grill carefully pull grill away from truck (Ref. Figure 2a-b).





Installation Instructions Premium Front Sensor Bumper

Product Number: F3850, F3851, F3852

Application: 2016 CHEVY 1500

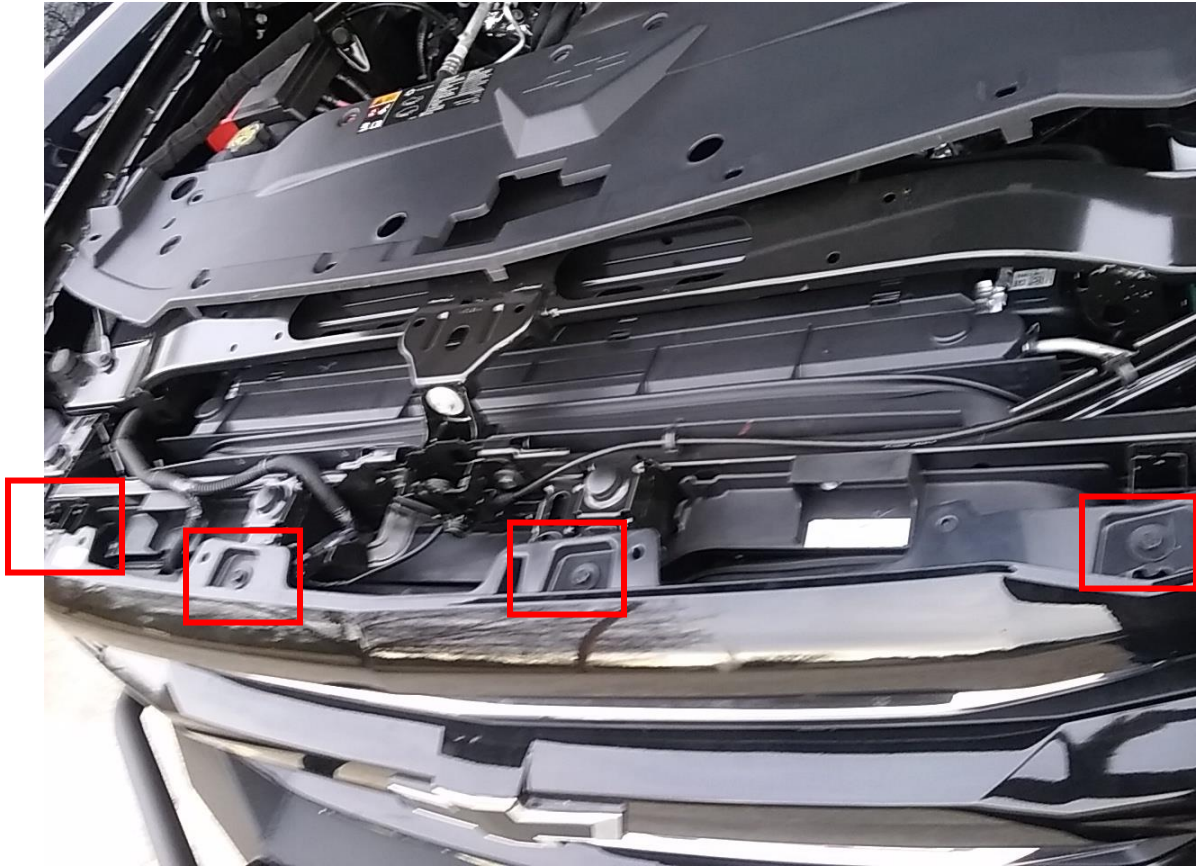


Figure 2a





Installation Instructions Premium Front Sensor Bumper

Product Number: F3850, F3851, F3852

Application: 2016 CHEVY 1500

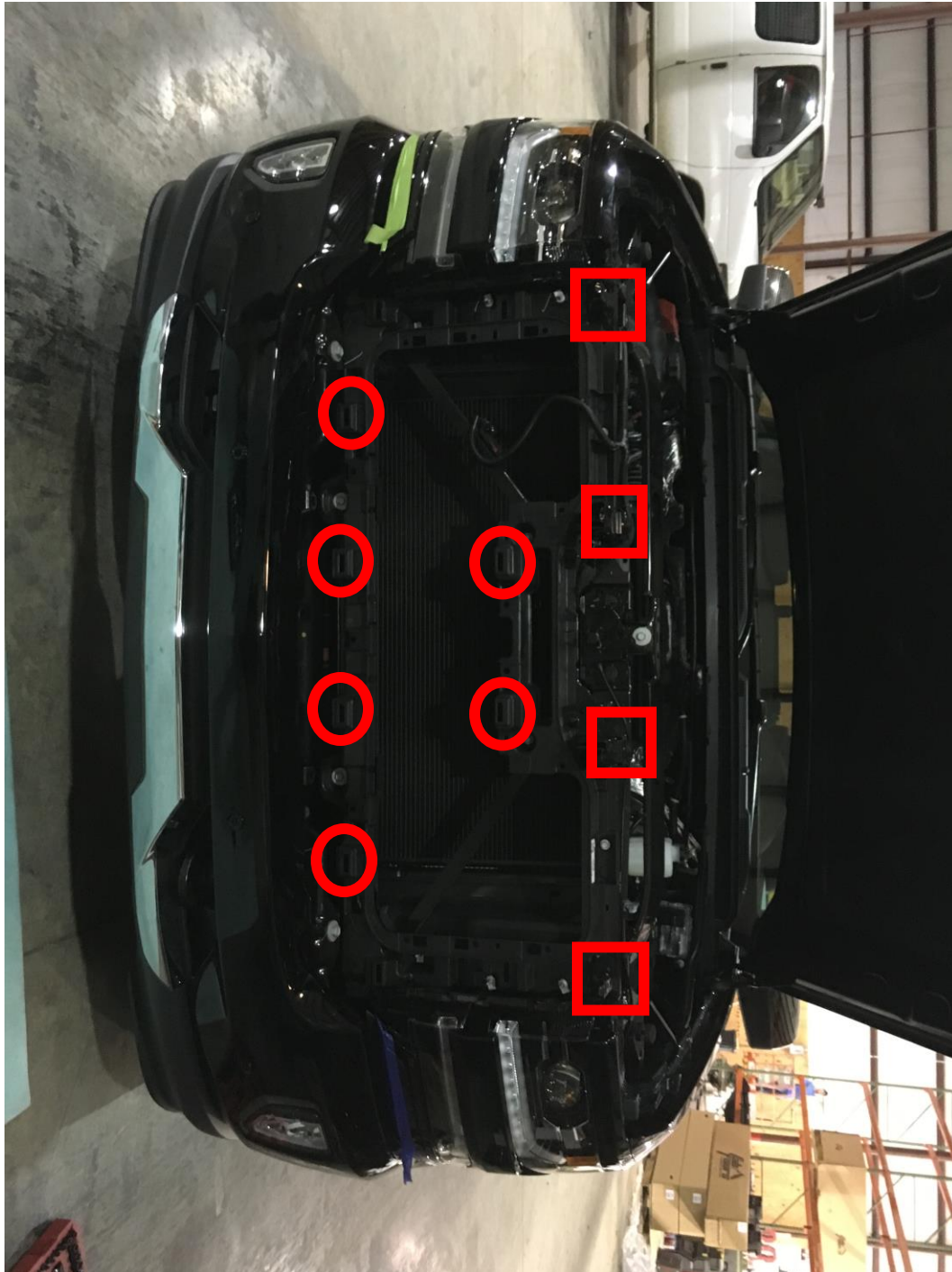


Figure 2b





Installation Instructions Premium Front Sensor Bumper

Product Number: F3850, F3851, F3852

Application: 2016 CHEVY 1500

- C. Remove bumper support bar (ref 3a-c). Using 18mm socket remove the single bolt connecting bar to bumper and 15mm socket to remove 2 bolts connecting bar to frame. Remove the fasteners connecting the bumper to the bracket. Using a 18mm socket/wrench remove bolts from the top and bottom of bracket connected to the bumper (ref 3c). Pull bumper away from vehicle. Using 22mm socket remove forward facing bolts holding bracket to frame. Repeat process on each side of vehicle.



Figure 3a





Installation Instructions Premium Front Sensor Bumper

Product Number: F3850, F3851, F3852

Application: 2016 CHEVY 1500



Figure 3b





Installation Instructions Premium Front Sensor Bumper

Product Number: F3850, F3851, F3852

Application: 2016 CHEVY 1500

Figure 3c

- D. Remove bolts securing tow hooks to frame. Location is indicated in image below by green rectangle (Ref. 4b).



Figure 4a

Figure 4b

- E. Remove OEM electrical harness from bumper. Disconnect harness from fog lights and sensors. Pop out plastic clips holding harness to bumper on both sides and carefully pull away.





Installation Instructions Premium Front Sensor Bumper

Product Number: F3850, F3851, F3852

Application: 2016 CHEVY 1500

II. Pre-Installation

NOTE: The Following Installation steps apply to the installation of the Front Bumper. PLEASE READ THE ENTIRE MANUAL BEFORE ATEMPTING INSTALLATION! Ignoring these steps will increase your probability of scratching the vehicle during product Installation!

- A. Remove the bumper from the shipping carton. Lay all items out on a blanket to prevent damage to the powder coating.
- B. Tap into OEM light harness using supplied tap connectors.
- C. Connect supplied wiring harness to tap connectors. **DO NOT CONNECT LIGHTS UNTIL BUMPER IS INSTALLED.**
- D. Install turn indicators into the plastic light insert using three self-tapping screws as shown below:

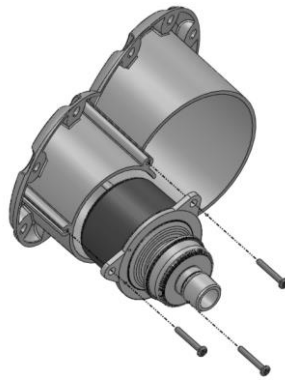


Figure 6

- E. Install the light inserts with turn indicators into the cutout in the bumper. Use the $\frac{3}{4}$ " length $\frac{1}{4}$ " stainless steel button head, $\frac{1}{4}$ " washers and hex nuts to fasten the insert through the *holes shown below:*





Installation Instructions Premium Front Sensor Bumper

Product Number: F3850, F3851, F3852

Application: 2016 CHEVY 1500

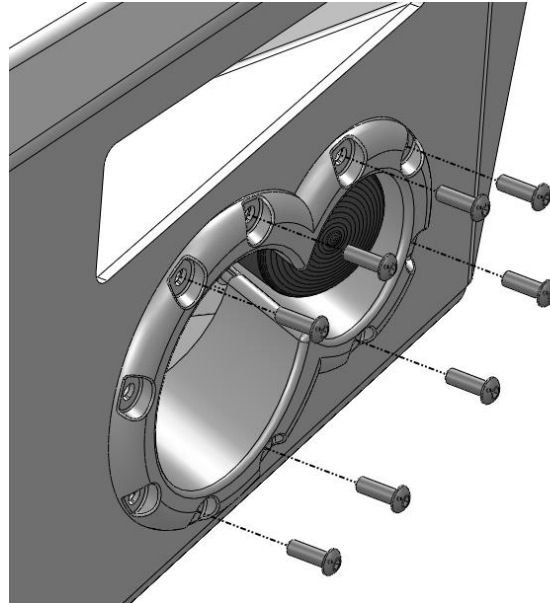


Figure 7

- F. Install the Fab Fours fog lights onto the mounting brackets as shown below using the #8 button head screws, washers, and hex nuts.

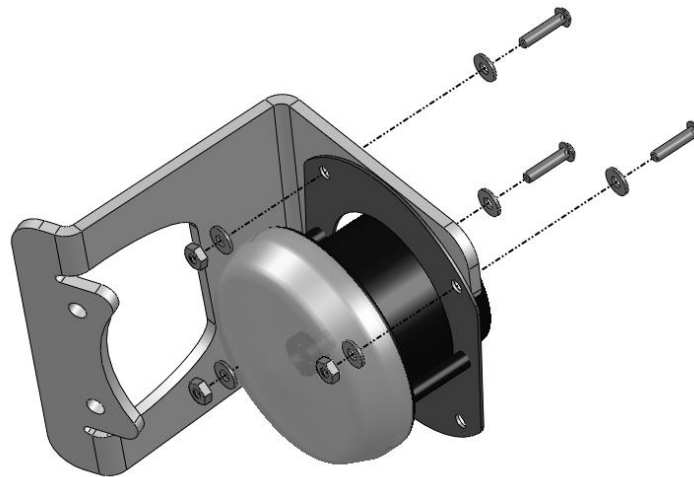


Figure 8

- G. Install the fog light and bracket into the bumper using the remaining two holes available in the light insert. Use the 1-1/2" length 1/4" stainless steel button heads with 1/4" washers and nuts.





Installation Instructions Premium Front Sensor Bumper

Product Number: F3850, F3851, F3852

Application: 2016 CHEVY 1500

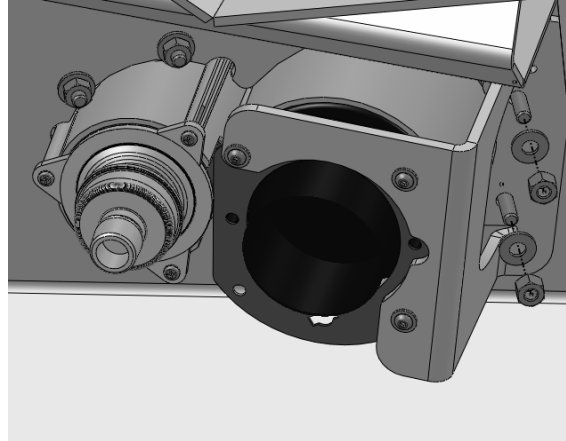


Figure 9

- H. Secure OEM electrical harness to the Fab Fours bumper.
- I. Repeat steps A through G for other side.
- J. Remove the sensors and sensor housings from your stock bumper. The sensors are removed by pressing outward on the tabs of the sensor housing (Figure 10, red arrows) and pulling away from the bumper. The sensor housing is then removed by pressing the four clips circled in red and pushing through the front of the bumper.



Figure 10





Installation Instructions

Premium Front Sensor Bumper

Product Number: F3850, F3851, F3852

Application: 2016 CHEVY 1500

- K. Insert your stock housings into your Fab Fours bumper. Each sensor retains its factory position (i.e. center stays in the center). The cutouts in the bumper are specially designed to accept the extrusions. Failure to insert these properly may result in errors with the parking assist features of your truck.**



Figure 6A Outer Sensor Orientation



Figure 6B Outer Sensor Orientation



Figure 6C Inner Sensor



Figure 6D Inner Sensor

- L. After assuring sensors work in current orientation, epoxy should be applied to the housing on inside of bumper and allowed to dry. Allow to dry before proceeding to step M.**
- M. Insert the sensors and sensor harness as shown in Figure 11.**





Installation Instructions Premium Front Sensor Bumper

Product Number: F3850, F3851, F3852

Application: 2016 CHEVY 1500



Figure 11

- **Optional:** If installing winch and roller fairlead into bumper, do it at this time. Follow the winch manufacturer's instructions for installation. If you are installing a winch with a pulling capacity of 12,000 lbs., the front face mounting holes must be used.

If not installing a winch, a license plate may be installed onto the front face of the bumper.





Installation Instructions Premium Front Sensor Bumper

Product Number: F3850, F3851, F3852

Application: 2016 CHEVY 1500

III. Front Bumper Installation

- A. Mount bracket to truck frame. Three bolts pass through the front of the frame and are indicated by the red boxes. One bolt passes through the side of the frame (i.e. cross bolt) and is indicated by the blue circles (Ref. 12a-b). All bolts should be hand tight to allow for adjustment.

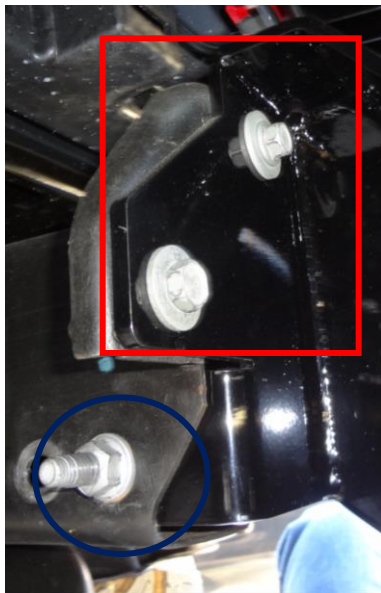


Figure 12

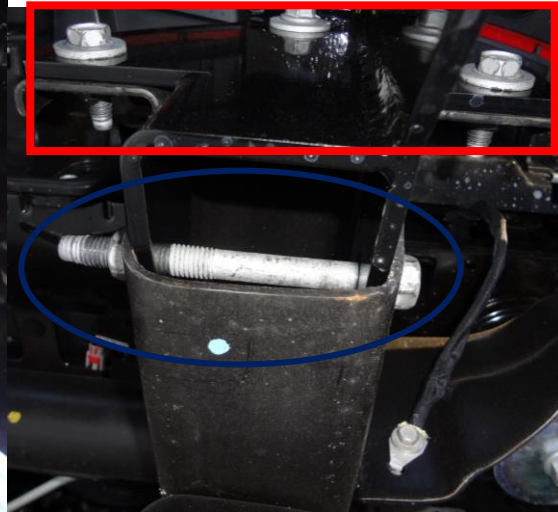


Figure 12b

- B. Mount bracket to bumper. With the help of at least two others, and possibly a floor jack, to support the center of the bumper, lift the Fab Fours bumper into place (Ref 13a). **Do Not Fully Tighten, Hand Tighten Only!**

Image of proper bracket placement





Installation Instructions Premium Front Sensor Bumper

Product Number: F3850, F3851, F3852

Application: 2016 CHEVY 1500



Figure 13a

Insert the set of stud plates from the inside facing out and tighten. Do Not Fully Tighten, Hand Tighten Only!

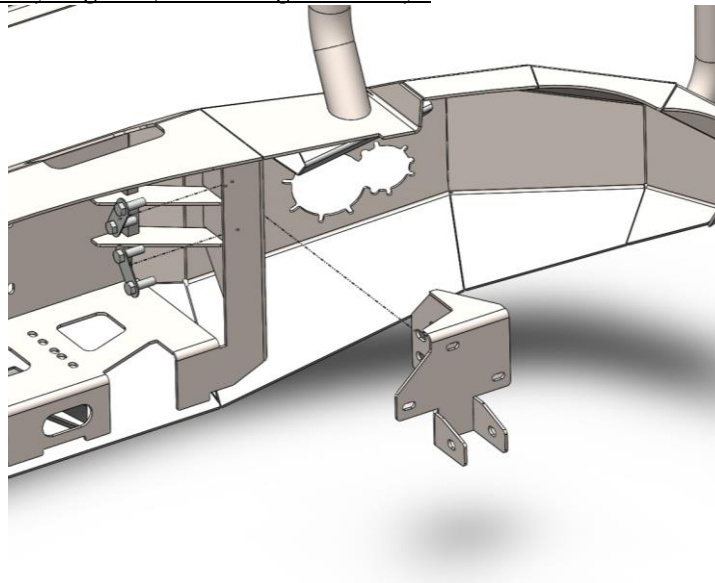


Figure 14

- C. Align the bumper side to side and top to bottom to ensure a perfect fit to the truck. Allow 0.375" of clearance to all painted surfaces if possible. This is to allow for frame flex!**





Installation Instructions Premium Front Sensor Bumper

Product Number: F3850, F3851, F3852

Application: 2016 CHEVY 1500

- D. Fully tighten all fasteners between bumper and brackets as well as brackets and frame.

Note: Do Not Over Tighten "Cross Bolt". Frame Should Not Compress!

- E. The fog light wiring may be installed at this time. To do so, connect wiring to fog light and tap into OEM fog light wiring using supplied tap connectors. Secure excess wiring to bumper.
- F. The turn indicator wiring may be installed at this time. To do so, connect wiring to turn indicator and tap into OEM turn indicator wiring using supplied tap connectors.
- G. Enjoy your New Replacement Bumper from Fab Fours!





Installation Instructions Premium Front Sensor Bumper

Product Number: F3850, F3851, F3852

Application: 2016 CHEVY 1500

Maintenance/Care

- Periodically check and tighten all fasteners.
- Stripped, fractured, or bent bolts or nuts need to be replaced.
- After washing of the vehicle make sure to fully dry all surfaces

IV. Contact Information

Fab Fours Inc.
1312 Camp Creek Rd
Lancaster, SC 29720

Phone (866)-385-1905
Fax (866)-574-1424
Email Support@fabfours.com



More than expected... Better than expected

