



# INSTALL INSTRUCTIONS

**Jeep JK Rear Stealth Bumper**

**Product : 508R0B, 508R0B-TC**

**Application : 2007+ Jeep Wrangler JK**

**( 2 Door and 4 Door )**

**⚠ WARNING**

Read the instructions completely before beginning installation. Before tightening bolts, drilling or cutting where required, check to make sure there are no obstructions such as brake, fuel or electrical lines which may be damaged. Also keep in mind this is an after-market product and MAY require minor shimming and/or trimming, reaming, etc. for proper fit. Road Armor is not responsible for any damages to vehicle.

**ⓘ IMPORTANT NOTICE**

- Be sure to inspect and test fit your product to ensure proper fitment before having it coated, painted, bed lined, etc.
- Road Armor will not be responsible for the cost of coating your unit if any problems with fit or finish are not noted and addressed beforehand.

**SAFETY FIRST!**

- FOLLOW ALL INSTRUCTIONS, YOUR SAFETY AND THE SAFETY OF OTHERS IS MOST IMPORTANT.
- WEAR APPROPRIATE EYE PROTECTION AND EXERCISE CAUTION WHEN DRILLING / CUTTING

**REQUIRED TOOLS**

Metric and SAE Socket Sets and Wrenches

5/16 Hex Bit Socket or Allen Wrench

5/8 Drill Bit or Step Bit

Small Pry Bar or Large Flathead Screwdriver

**INCLUDED HARDWARE**

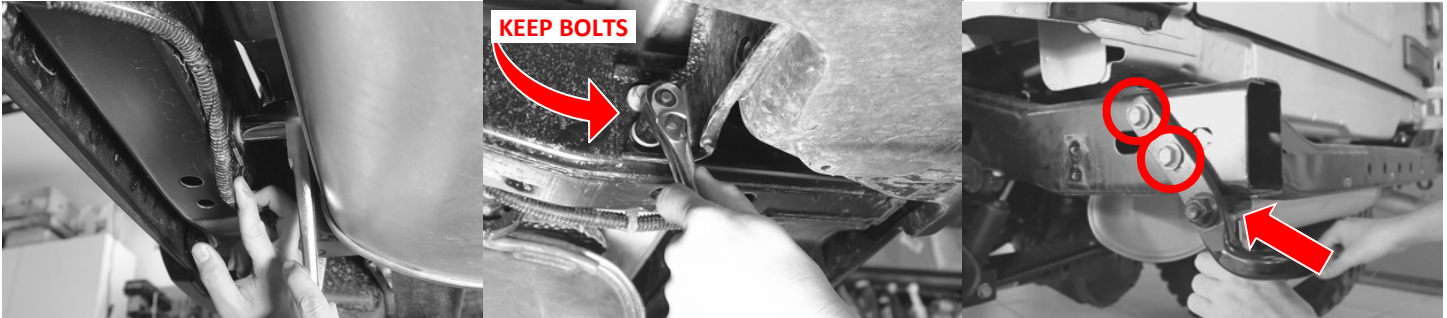
- (6) 1/2" x 1.5" Bolt Tabs
- (6) 1/2" Keeper Washers
- (10) 1/2" Grade 8 Washers
- (10) 1/2" Grade 8 Lock Washers
- (4) 1/2" x 1.5" Grade 8 Bolts
- (2) Double Nut Plates
- (1) Stain Steel Road Armor Logo Letters and Bolt Kit

**TIRE CARRIER PARTS**

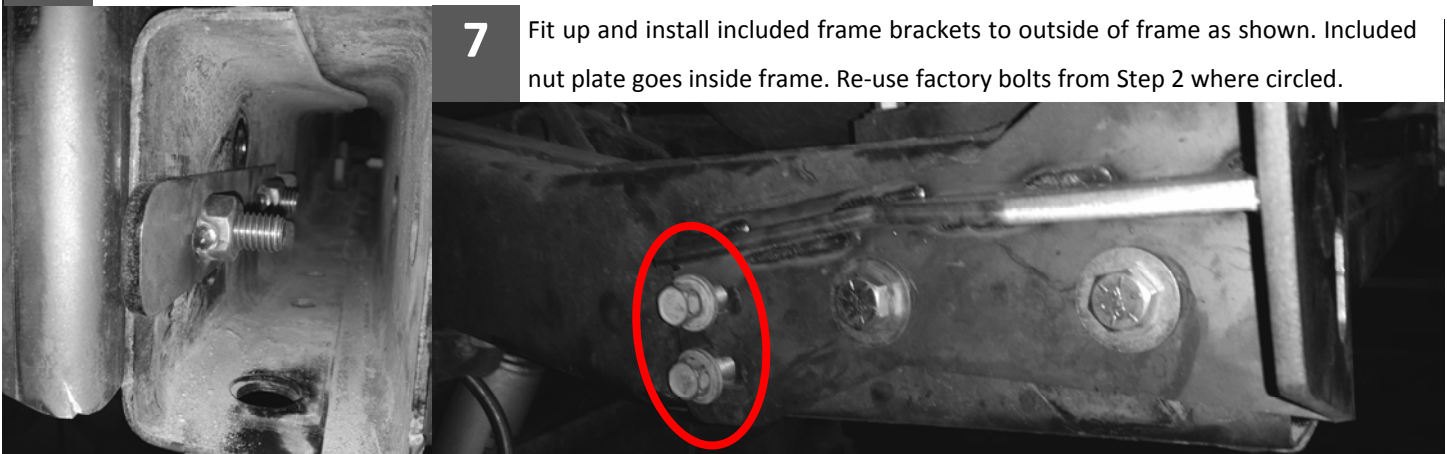
- (2) Brash Bushings
- (1) Latch
- (1) Striker Pad
- (6) 3/8-16 x 1.25" Stainless Button Head Bolts
- (6) 3/8" Stainless Washer / (6) 3/8" Stainless Nylocks
- (4) 5/16-18 x 1" Stainless Button Head Bolts
- (3) 1/2-13 x 1" Grade 8 Bolts
- (2) 1/4-20x1.25" Counter Sink Socket Head Cap Screws
- (2) 1/4-20 Nylocks / (2) 1/4" Washers
- (1) 1/2-20 x 1.25" Button Head with Nylon Patch
- (3) 1/2-20 Wheel Studs



- 1 Using a 16mm socket, remove the bolts securing the inner mounting brackets to the rear cross member.
- 2 Now remove the 2 bolts securing the rear bumper outer mounting brackets. Set aside these bolts as they will be reused.
- 3 Remove factory recovery hook if equipped. One bolt on the bottom and two through the frame. Discard the nut plate.



- 4 Pull off factory bumper and set aside.
- 5 Install Road Armor Logo with included #10 Stainless Button Head Bolts and Keps Nuts.
- 6 Install Lights as this is easier now than after Road Armor bumper has been installed.



**IF YOU DO NOT HAVE THE TIRE CARRIER ROAD ARMOR BUMPER SKIP TO STEP 17**

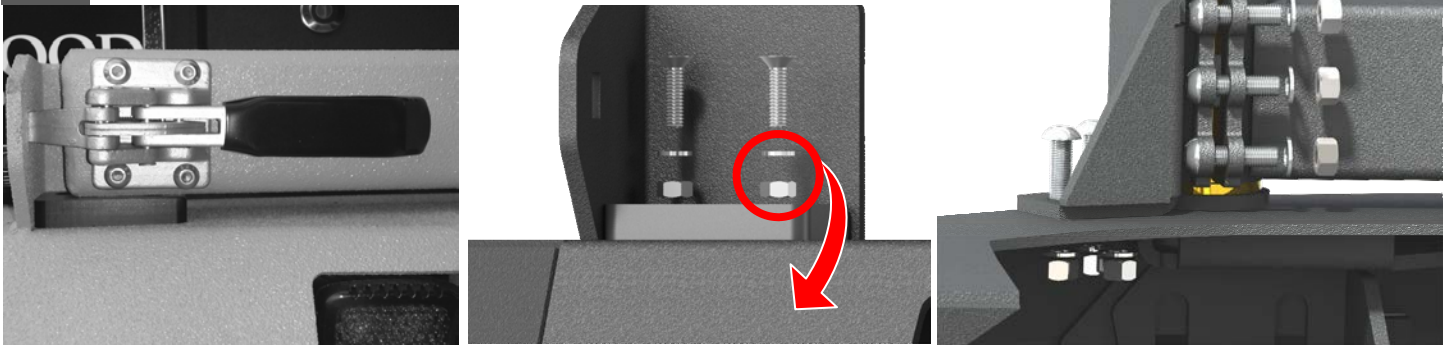
- 8 Remove the spare tire from tail gate and set it aside.
- 9 Using a 13mm socket, remove the 8 bolts securing the spare tire carrier mount to the tailgate and allow to hang.
- 10 On the inside of the tailgate near the latch, pop out the vented plastic piece to gain access to wiring.



- 11 Press down on the plastic clip and then unplug the 3rd brake light wiring harness and remove along with the pass



**12** Attach Latch to Tire Carrier arm using the four (4) 5/16" Stainless Steel Button Head Bolts.



**13** Attach Striker Pad with two (2) 1/4-20 Counter Sunk Screws with 1/4" washer and Nylock nuts on the inside of bumper .

**14** Attach Tire Carrier arm by first fitting one brass bushing (flange down) over the hinge pin. Then fit the open end of the tire carrier arm over the bushing and begin sliding the second brass bushing down over the hinge pin (flange up). Fit up the support bracket and thread the 1/2" Button Head through bracket into hinge pin, but do not tighten. Now, using the 3/8" hardware bolt on the support bracket. Be sure to get every bolt started before fully tightening.

**TIP** The three (3) 3/8" button head bolts that clamp the brass bushings over the hinge pin adjust the firmness of the swing. Do not over tighten these as you could damage the bushings, but tighten them until you are happy with the resistance.

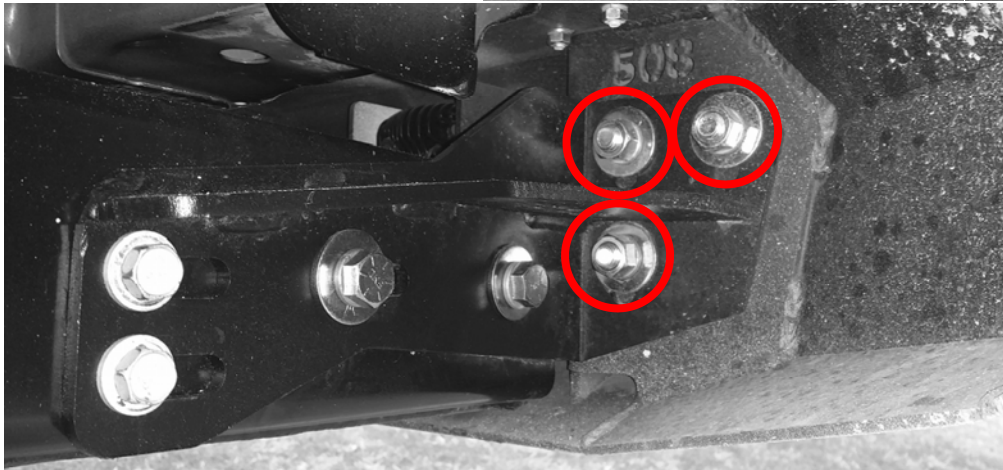
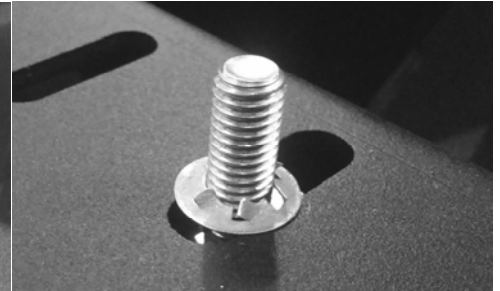
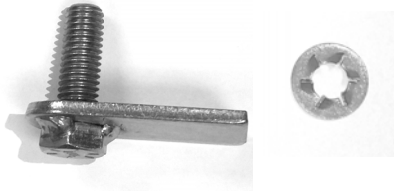
**15** The three 1/2" Grade 8 bolts triangulate over the wheel mount shaft. This shaft allows for some in and out adjustment. Be sure to crank these bolts down and check them periodically!

**16** Install the included wheel studs through the holes as marked if you have stock Jeep axles. These holes will need to be drilled out to 5/8" using a step bit if you have one.



**TIRE CARRIER ASSEMBLED—CONTINUE FROM HERE**

- 17** Install the Bolt Tabs through bumper using the included keeper washers. Use a 3/4" deep socket to push the washers over the threads.



- 18** Fit up your new Road Armor Bumper and start a washer, lock washer and nut over each bolt. Once all nuts are finger tight, check fitment and tighten them all down. Check that all the bracket bolts are fully tight as well.

**IF YOU HAVE ANY INTERFERENCE ISSUES WITH THE FACTORY TOW HITCH RECEIVER**

Pull the wiring harness straight down and out of it's mount and zip tie it out of the way.

Remove the 4 bolts securing the tow hitch receiver to the rear cross member using an 18mm socket.

If the tow hitch receiver is difficult to remove, use a pry bar to assist in removal.

Now install bumper as in STEP 18, then using a floor jack and a block of wood, re-install the tow hitch.

