



# INSTALL INSTRUCTIONS

**Spartan Front Bumper**

**Product : 4192XF**

**Application : 2019+ Dodge Ram 2500,3500**

## I WARNING

Read the instructions completely before beginning installation. Before tightening bolts, drilling or cutting where required, check to make sure there are no obstructions such as brake, fuel or electrical lines which may be damaged. Also keep in mind this is an after-market product and MAY require minor shimming and/or trimming, reaming, etc. for proper fit. Road Armor is not responsible for any damages to vehicle.

## ⓘ IMPORTANT NOTICE

- Be sure to inspect and test fit your product to ensure proper fitment before having it coated, painted, bed lined, etc.
- Road Armor will not be responsible for the cost of coating your unit if any problems with fit or finish are not noted and addressed beforehand.

## SAFETY FIRST!

- FOLLOW ALL INSTRUCTIONS, YOUR SAFETY AND THE SAFETY OF OTHERS IS MOST IMPORTANT.
- WEAR APPROPRIATE EYE PROTECTION AND EXERCISE CAUTION WHEN DRILLING / CUTTING

## REQUIRED TOOLS

SAE & METRIC Socket set and wrenches

Screw drivers, pry tool, pick tool, pliers

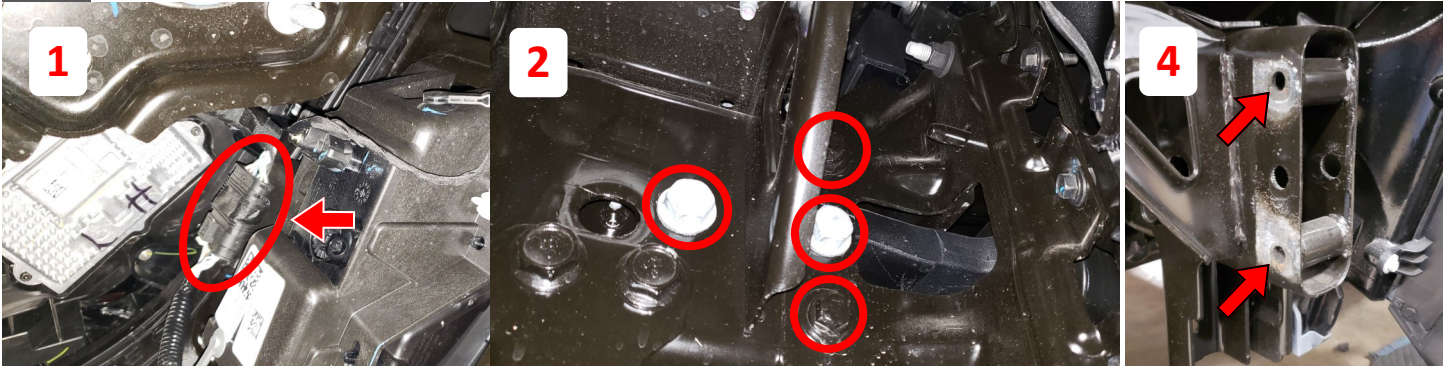
## RECOMMENDED TOOLS

## INCLUDED HARDWARE

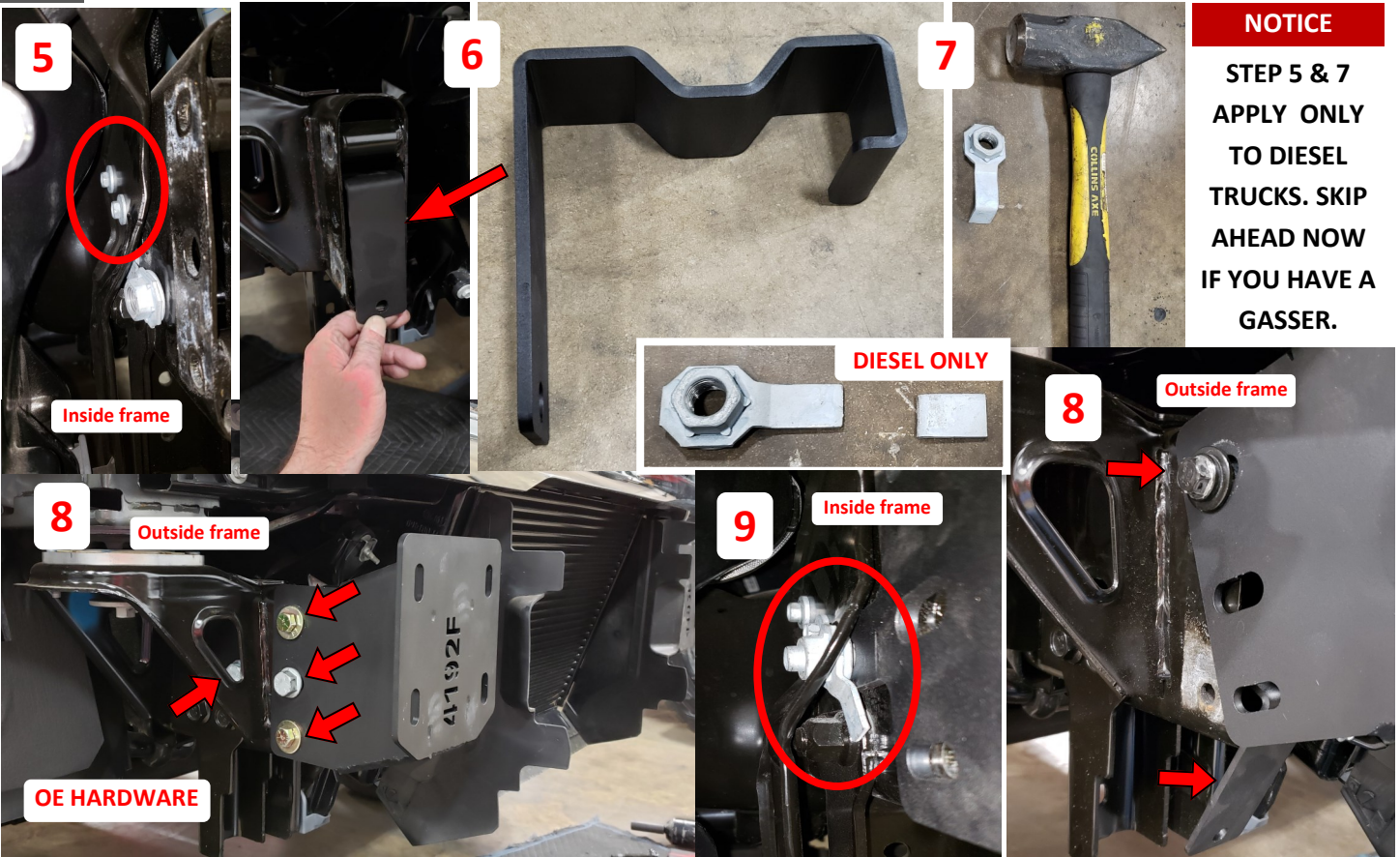
- 6 1/2" Bolt 15/16" O.D. Zinc Pushnut Bolt Retainer
- 6 Single Bolt Plates
- 6 1/2" Flat Washers
- 6 1/2" Split Lock Washers
- 6 1/2"-13 Grade 8 Hex Nuts
- 2 1/4"-20 x 3/4" ASTM A307 Grade A Zinc Finish Hex Bolt
- 4 1/4" x 0.625" OD Low Carbon Zinc Finish Steel SAE General Purpose Flat Washer
- 2 1/4" Zinc Finish Medium Split Lock Washer
- 2 1/4"-20 Zinc Finish Grade A Finished Hex Nut
- 4 3/8" Dome Plugs
- 6 1 1/8" Plugs



- 1 Disconnect bumper harness plug, located near driver side fog light housing.
- 2 Remove OE tow hook & bumper bracket bolts as shown.
- 3 Remove tow hooks followed by front bumper.
- 4 Drill top and bottom frame holes to 1/2" to accommodate new hardware.



- 5 Loosen two bolt securing each intercooler bracket to inside of frame. (Do not remove from frame)
- 6 Loosely install frame crush brackets followed by large tow hook bolts through frame end . (Hook end first)
- 7 Using large hammer, break off 90 deg. tab off of both rear tow hook bolt tabs.
- 8 Install each frame bracket using 4-OEM bolts & nuts; followed by remaining two hook bolts.
- 9 Install modified tow hook bolt tab on rear tow hook bolt (Between frame bracket and intercooler bracket.)



**NOTICE**

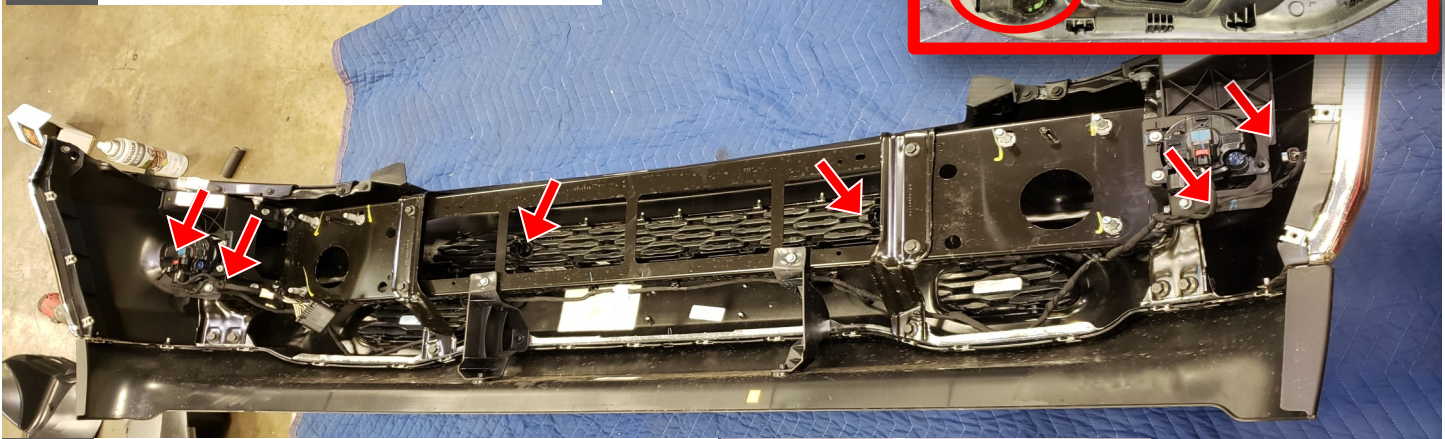
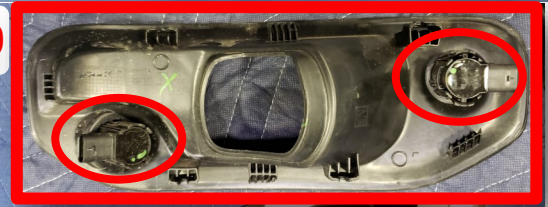
STEP 5 & 7  
APPLY ONLY  
TO DIESEL  
TRUCKS. SKIP  
AHEAD NOW  
IF YOU HAVE A  
GASSER.



10

**\*If equipped\* Remove all factory sensors, housings & harness from OE bumper. \*Track location for install\***

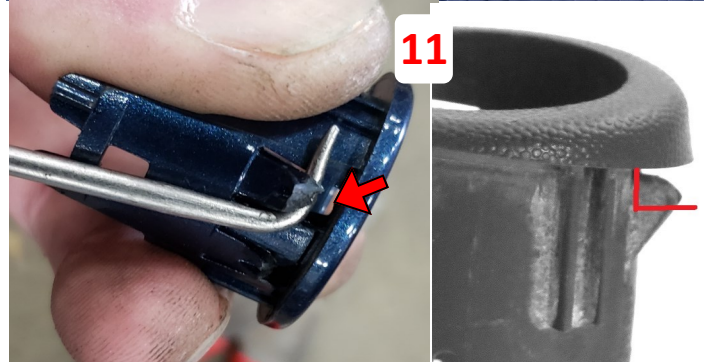
10



11

**Trim 1/16" off sensor housing for proper fit onto bumper. Zip tie can be used on backside to secure each sensor assembly to bumper for additional security.**

11



12

**\*DIESEL\* Must reinstall intercooler air dam (if equipped) (over heating may occur.)**

13

**Insert the Single Bolt Tab through outside top slot as indicated, then affix to the bumper side bracket using a retainer clip. Then do the same with the Single Bolt Tab on the opposite side.**

14

**\*\*Install/Secure all sensors & lighting at this time.\*\***

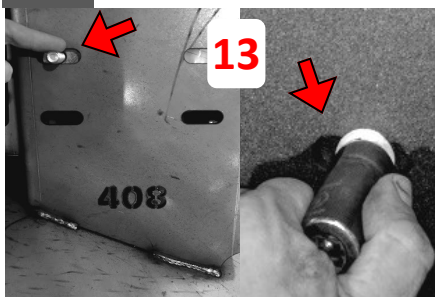
15

**Install bumper to frame brackets aligning the retained bolts with bracket slots; secure using supplied 1/2" washers, lock washers and nuts. \* 3/8" gap between bumper and grille recommended\***

16

**Once centered and satisfied with fitment tighten everything down, \*including frame & intercooler bracket.**

**\*Trim inner fender liner to fit bumper profile & Install Road Armor logo with hardware provided. \***



13



15



16

**FINISHED**

