

# **FITTING INSTRUCTIONS**

**ARB COMBINATION WINCH, NON-WINCH BULL BAR TO SUIT  
CHEVROLET SILVERADO 03 ON 1500 MODELS.**

**PRODUCT No. 3462020, WITH FITTING KIT 3562040**

## **WARNING**

### **FOR VEHICLES EQUIPPED WITH SRS AIRBAG**

**WHEN INSTALLED IN ACCORDANCE WITH THESE INSTRUCTIONS, THE FRONT  
PROTECTION BAR DOES NOT AFFECT OPERATION OF THE SRS AIRBAG.**

### **TAKE NOTE OF THE FOLLOWING:**

- **THIS PRODUCT MUST BE INSTALLED EXACTLY AS PER THESE INSTRUCTIONS USING ONLY THE HARDWARE SUPPLIED.**
- **IN THE EVENT OF DAMAGE TO ANY BULL BAR COMPONENT, CONTACT YOUR NEAREST AUTHORISED ARB STOCKIST. REPAIRS OR MODIFICATIONS TO THE IMPACT ABSORPTION SYSTEM MUST NOT BE ATTEMPTED.**
- **DO NOT USE THIS PRODUCT FOR ANY VEHICLE MAKE OR MODEL, OTHER THAN THOSE SPECIFIED BY ARB.**
- **DO NOT REMOVE LABELS FROM THIS BULL BAR.**
- **THIS PRODUCT OR ITS FIXING MUST NOT BE MODIFIED IN ANY WAY.**

### **Note :**

- **This bull bar is suitable for Warn 9,500-16,500lb winches.**
- **Fog light provisions are in lower pan area of bull bar. IPF840FYS lights are suitable for this location.**

### **Tools Required**

Metric Spanner and Socket set	Allen key set
Phillips head screwdriver	Dia 15/64", 10.0 and 12.0mm drill bits
Electric drill 13mm chuck	Sikaflex 227 adhesive, black color

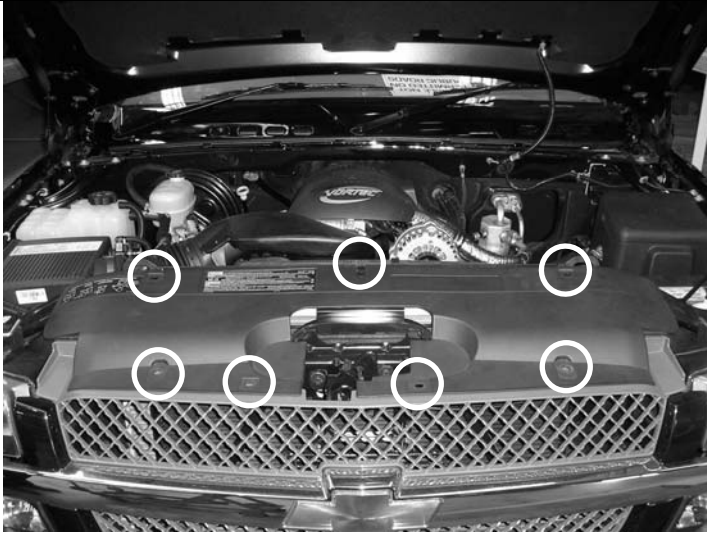
USE	PART No	QTY	DESCRIPTION
MOUNT BRACKETS TO VEHICLE	3756785L	1	BRACKET BAR MOUNT LHS
	3756785R	1	BRACKET BAR MOUNT RHS
	3199796	2	PLATE CAGE NUT
	4581049	10	M12 WASHER FLAT
	4581050	8	M12 WASHER SPRING
	6151255	6	BOLT M12 X 40
	6151244	2	BOLT M12X150
	6151189	2	NUT M12x1.75
	6151305	4	NUT M12 CAGE SUIT 4MM
	5811037	2	SLEEVE
WINCH	180302	8	CABLE TIE
TOW HOOK RELOCATION	6151365	2	EYEBOLT M24 2.5 SWL
	6151361	2	NUT M24 GR8 ZP
	3756765	2	BRACKET NUT RETAINING
	4581300	2	WASHER M24 EYEBOLT
	6151046	2	WASHER M6
	6151017	2	BOLT M6 X 16mm
	6151128	2	NUT FLANGE M6
	CONTROL BOX FITTMENT	4581291	2
	6151321	2	NUT FLANGED
	6151364	2	SCREW CAP M10X30 ZP
	3756775	1	BRACKET STD CONTROL BOX IN PAN
	3199790	1	TRIM PLATE FOR 16500LB CONTROL
	NUMBER PLATE FITTMENT	6151017	4
	6151128	4	NUT FLANGE M6
	6151046	4	WASHER M6
	3751384	1	BRACKET NO.PLATE
	WINCH COVER FITTMENT	6151128	2
	6151256	2	SCREW M6 S/STEEL BUTTON HEAD
	6151046	2	WASHER M6
	6191013	1	EXTRUSION WINCH COVER @ 1757
	6522048	1	PANEL WINCH COVER
WASHER BOTTLE PROTECTION	6131349	1	FRAME ASSY WASHR BOTTLE PROT
	6151303	2	NUT CAGED M8 SUIT 1.6-3.2
	6151022	2	BOLT M8X25
	4581044	2	WASHER FLAT M8
	4581046	2	WASHER SPR M8
	6151232	2	BOLT M10X30
	4581040	2	WASHER FLAT M10
	4581048	2	WASHER SPR M10

BAR TO MOUNT ASSEMBLY	6151255	6	BOLT M12 X 40mm
	4581050	6	WASHER SPRING M12
	4581049	12	WASHER FLAT M12
	4581048	2	WASHER SPRING M10
	6151321	2	NUT M10 FLANGED
	6151232	2	BOLT M10 X 30mm
	4581040	2	WASHER FLAT 3/8"
	6151189	6	NUT M12x1.75
INDICATOR ASSY	6821151R	1	INDICATOR ASSY RHS
	6821151L	1	INDICATOR ASSY LHS
	6151308	4	SCREW SELF TAPPING
	6821116	4	NUT NYLON PLUG
	6821152	2	LOOM
	180701	6	SCOTCH LOCKS
	180302	4	CABLE TIE
INNER GUARD RETAINER	3199787R	1	PLATE INNER GUARD
	3199787L	1	PLATE INNER GUARD
	6151128	4	NUT FLANGE M6
	6151213	4	SCREW M6X20 BZ
	4581082	4	WASHER M6X20 BZ

**NOTE: Shipping brackets connecting bull bar to pallet and associated fasteners are not intended to be reused in fitted bar assembly.**

## ASSEMBLY SEQUENCE FOR WINCH BUMPER.

### 1. FITTING MOUNTING BRACKETS



1.1 Remove the plastic shroud above the radiator as shown, by releasing plastic clips



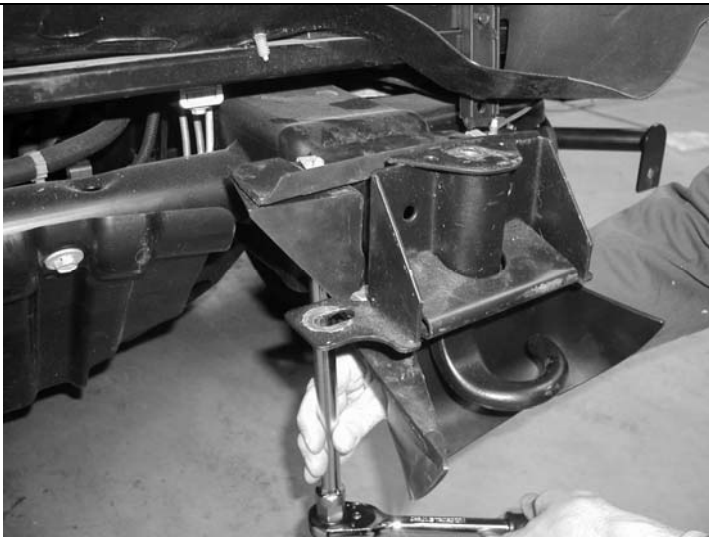
1.2 To remove the grille, carefully push the retainer spring clips back out in four places behind grille. Pull outer bar from between headlights forward to release from clip into end of guard. *NOTE: It may be necessary to remove top headlights to gain access to these clips if you cannot release them easily.*



1.3 Remove bumper by undoing four bolts from above and behind bumper then two bolts securing bumper to wing support braces from under and behind forward of wheel arch area.



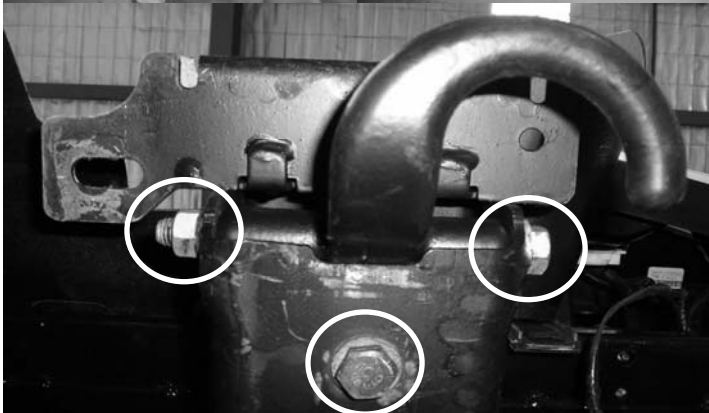
1.4 Remove stabilizer arms both sides



1.5 Remove plastic shrouds around chassis

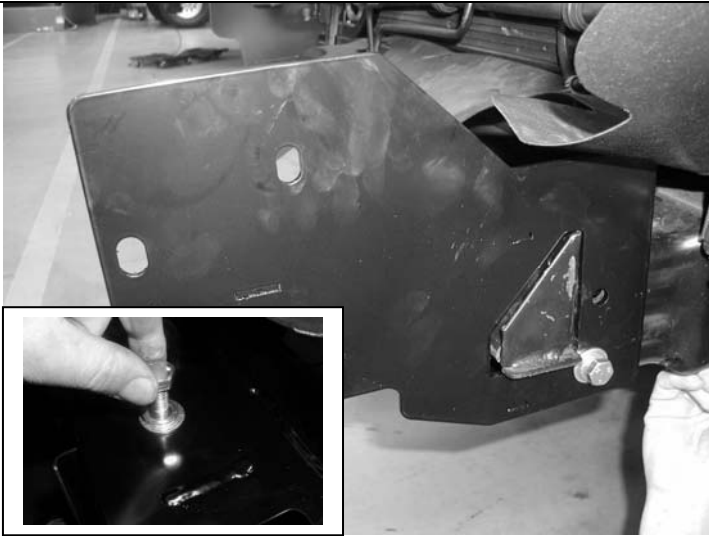


1.6 Remove tow hooks

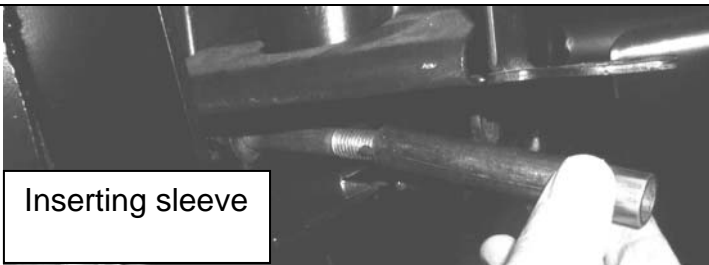




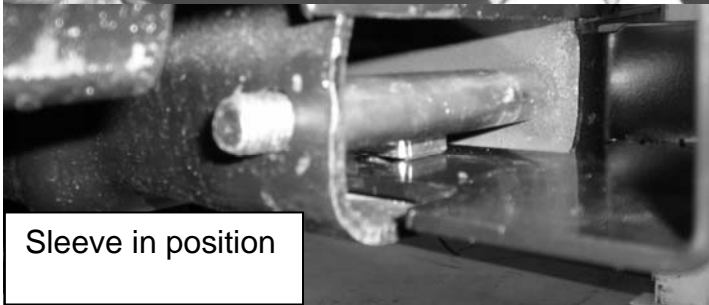
1.7 Fit cage nuts to bracket tangs as shown



1.8 Position the mount brackets as shown on the ends of the chassis rails (LHS shown). Loosely fit an M12 bolt and washer set to top bolt position and lower position as shown finger tight only.

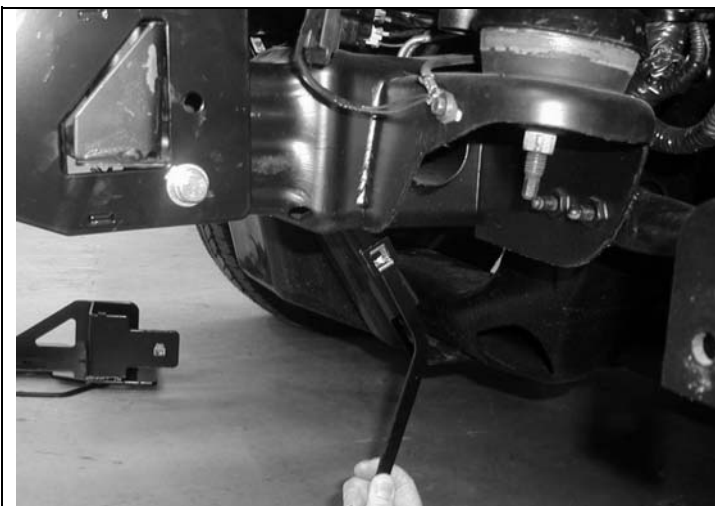


Inserting sleeve



Sleeve in position

1.9 Partly withdraw M12 x 150 bolt and fit crush sleeve over bolt body inside chassis as shown. Fit flat and spring washers, and nut. Do not tighten.



1.10 Fit M12 cage nuts to both bent plates, 1 x LH and 1 x RH as assemblies are opposite for each side of vehicle. Insert nut assembly through large hole in underside of chassis and up to meet vacant hole above long bolt. Insert M12 bolt and washer set, do up finger tight.



1.14 Check that brackets are parallel to each other, if not adjust. When parallel then tighten all bolts (nominal outside dimension across brackets is 898mm).  
Fit grille and shroud back into position.

## 2. PREPARING BULL BAR FOR FITTING



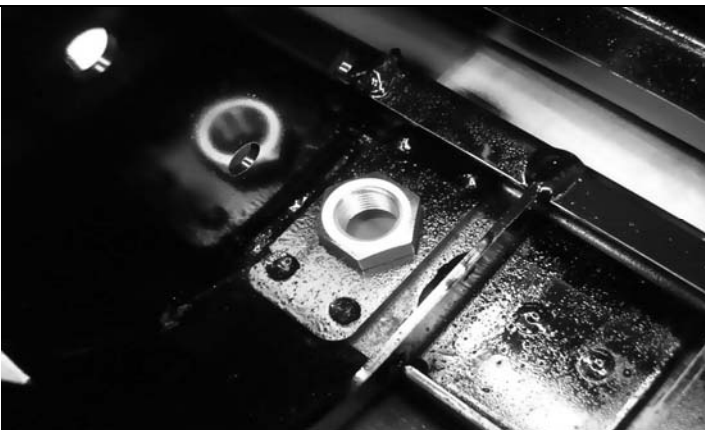
2.1 Remove lights from cartons and then remove screws and speed nuts from each light. These fasteners are not to be reused – new screws are supplied in the fitting kit.



2.2 Insert nylon nuts into square holes in light brackets inside wing area



2.3 Fit lights using screws supplied in fitting kit, taking note of RH and LH light bodies, they are different and must be placed on the correct side of bull bar.



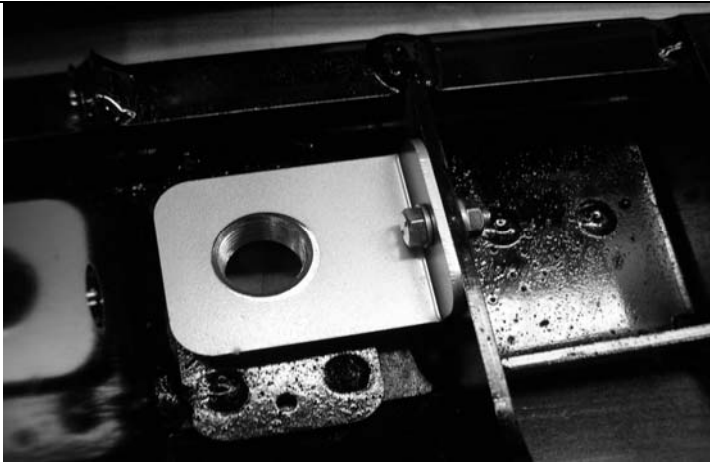
2.4 Fit large eyebolt nut into the plate on the inside of the bar.



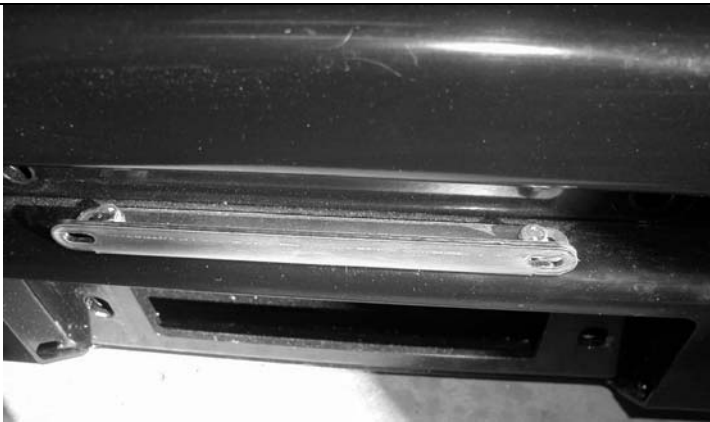


2.5 Screw in the eyebolt using the large washer. Eyebolt can be positioned to sit vertically by rotating the large nut to the correct position.

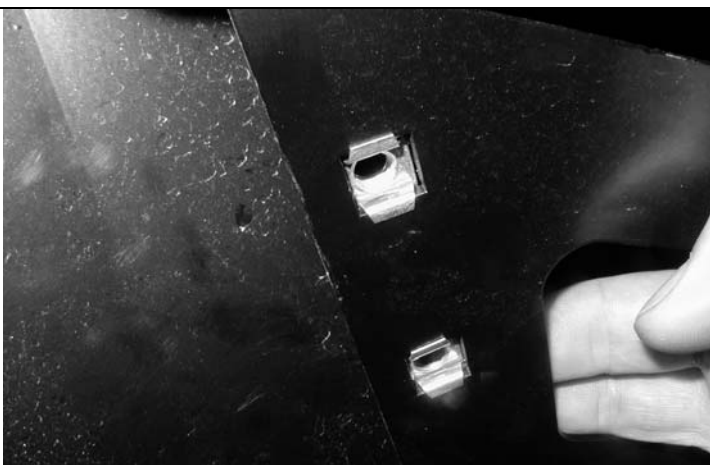
**NOTE: EYEBOLTS SHOULD BE REMOVED FOR SAFETY REASONS WHEN TRAVELLING ON PUBLIC ROADS.**



2.6 When the large nut is in its final position, secure with the nut retaining bracket using an M6 bolt, washer and flange nut.

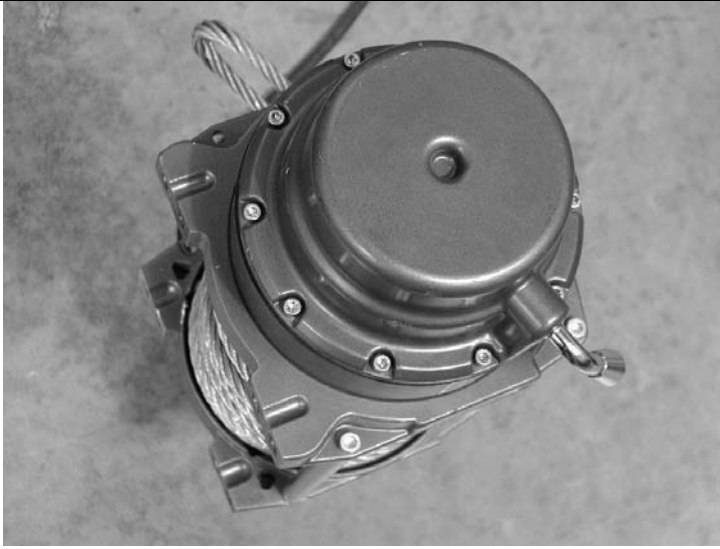


2.7 Secure the number plate bracket using M6 bolts, flat washers and flange nuts. Attach the longer flange to the bullbar and the shorter flange to the number plate.



2.8 Fit the M8 cage nuts to the square holes in the wing brace on the LHS (washer bottle side) of the bull bar. The body of the cage nuts are to be on the inside of the brace. These nuts are to be used to fasten the washer bottle protection arm to the bull bar.

### 3. IF FITTING WINCH



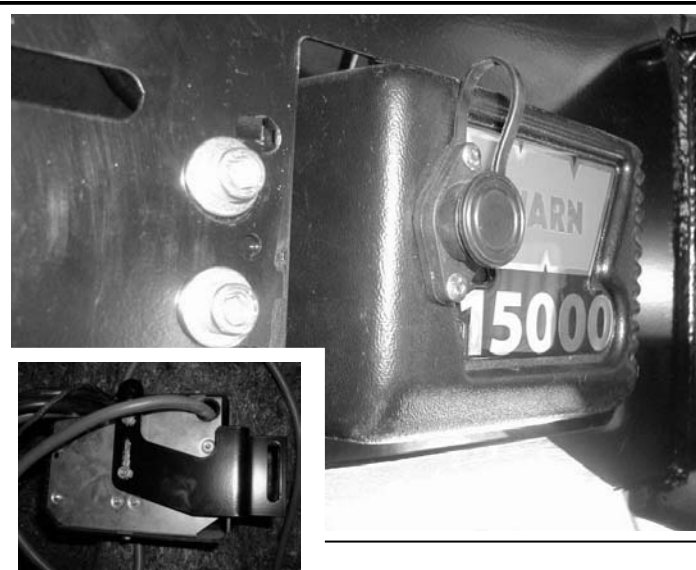
3.1 From the factory the winch handle should be in the position as shown.

Remove cable retaining band and position cable loop so it will go through roller fairlead when it is placed in bull bar.



#### 3.2 Fit control box to pan:

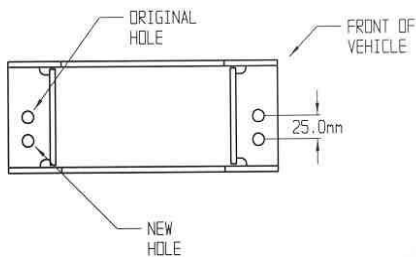
- For 9500-12000lb winches, use universal control box bracket supplied, attaching to rear of control box mount studs.
- Slide bracket flange under pan and align with mount slots.
- Fasten in position with 2 x M10 cap screws, black washers and flange nuts.



- For 15000lb winches, use Warn supplied control box bracket, attaching to rear of control box mount studs.
- Slide bracket flange under pan and align with mount slots.
- Fasten in position with 2 x M10 cap screws, black washers and flange nuts.

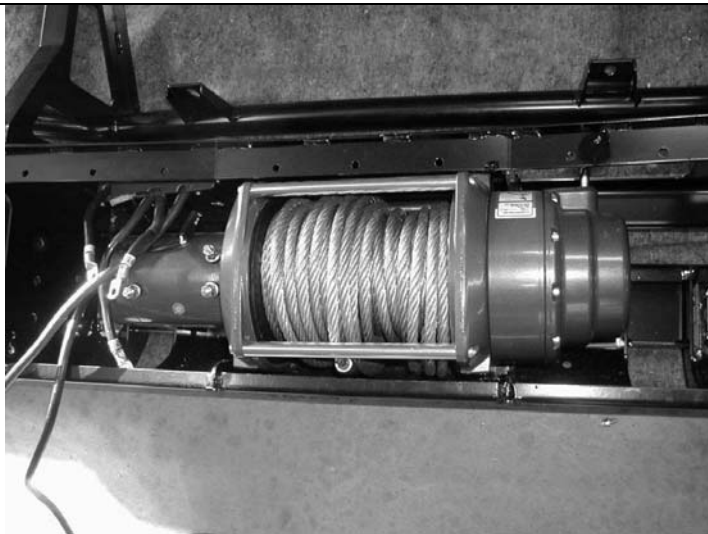


- For 16500lb winches, apply Sikaflex (or similar product) to rear of control box trim plate from fitting kit (note orientation critical to suit final position with control box profile in pan opening).
- Position trim plate on top of pan centrally about control box opening and line up with mount slots.
- Fasten in position with 2 x M10 cap screws and flange nuts from fitting kit.



3.3 On some models, the roller fair lead must be drilled prior to fitment.

Mark out as shown and using a 13.0 mm drill bit, drill two holes as shown in diagram.



3.4 Viewed from front of vehicle the winch clutch (handle) must be positioned on the LH side (same side as smaller square access hole in pan). Cable must spool from the bottom of winch. Draw off enough cable so cable crimp can be pulled through roller fairlead.

*Hint: If crimp is too large to fit through, remove a circlip from a horizontal roller, partially remove the shaft so roller gap is increased and feed cable and crimp through. Refit shaft and circlip.*

Bolt winch in position with the roller fair lead in place.

*Hint: To increase access to mount bolts in front of roller fairlead, remove circlips from bottom of each vertical roller shaft, push shaft up so roller can be dislodged sideways. Do up bolts in fairlead and winch, then refit circlip.*

Connect the winch control box cables to the winch motor. Refer to the Warn handbook for additional information. Connect the long winch + & - cables to the vehicle **after** the bar is installed. **Refer to the Warn winch manual for vehicle wiring instructions.**



**Fitting with winch, number plate above RFL**



**Fitting without winch, number plate covers RFL opening**

3.5

**Fitting number plate – with winch**

Bolt number plate to the bracket with the M6 X 16mm bolts and M6 flange nuts through the lower holes of the number plate.

**If not fitting winch.**

Bolt the number plate through the top holes using M6 X 16mm bolts and M6 flange nuts.



3.6 **If not fitting winch cont.**

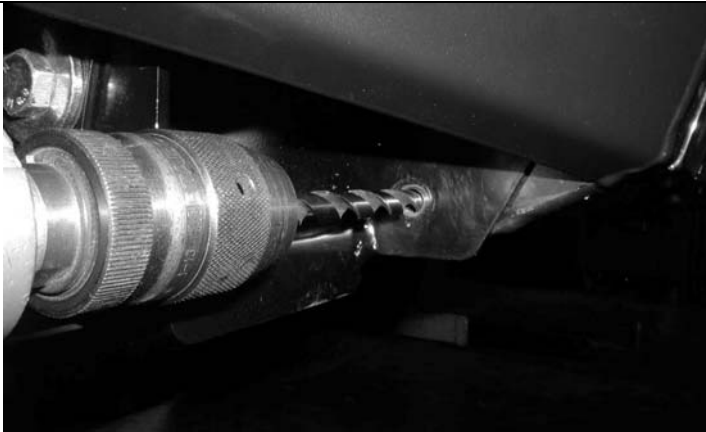
Wrap rubber extrusion around winch cover.

Place washers over the winch cover fixing holes located on the top middle face of the winch bumper.

Place the winch cover on top of the winch bumper inline with the mount holes.

Bolt together using the M6 button head stainless steel screws and M6 nuts.

## 4. FITTING BULL BAR TO VEHICLE



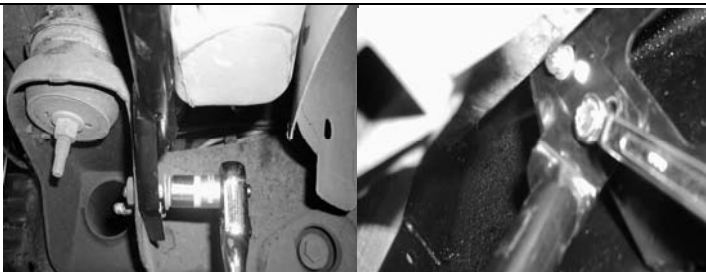
4.1 Using two people, three if winch fitted, position the bar assembly on the vehicle mounts.

Bolt the bar to the mounts using M12 bolts, large flat washers and spring washers. Align the bar to the profile of the guards, grille and light profile and tighten all bolts.

Using the M10 pilot holes in mount brackets, drill pinning hole through uprights on bull bar. Fit M10 screw, washer set and flange nut and do up tight.



4.2 Trim excess plastic inner guard molding to meet lower profile of bull bar wing. Note the position of water bottle on LHS of vehicle and trim neatly around it.



4.3 Fit washer bottle protection frame to lower mounts where original bumper stabiliser arms were located using 2 x M10 x 30 bolt and washer sets. Fit off the upper bracket to inner wing area of bull bar as shown using M8 x 25 bolts and washer sets.

NOTE: The 2 x M8 cage nuts should be in place from step 2.7.



4.4 Fit inner guard plates to ends of bull bar wings and fasten with M6 black screws and washers.



#### 4.5 ***If fitting with winch***

With the winch cable through the roller fair lead. Mount the hook to the end of the cable.



#### 4.6 Wire up the indicator and clearance lamp assemblies. Use scotch locks to splice cables to existing indicator and clearance lamp wiring and cable tie securely.

If fog lights are to be installed, mount positions are on lower pan area between winch opening and high lift jack position.

#### **Refer to the Warn winch manual for vehicle wiring instructions.**

Ensure that electrical cables are installed well clear of sharp, hot or moving objects. Secure the winch cables to the vehicle and winch bumper with the supplied cable ties.



# **FITTING INSTRUCTIONS**

**ARB COMBINATION WINCH, NON-WINCH BULL BAR TO SUIT  
CHEVROLET SILVERADO 03 ON 1500 MODELS.**

**PRODUCT No. 3462020, WITH FITTING KIT 3562040**

## **WARNING**

### **FOR VEHICLES EQUIPPED WITH SRS AIRBAG**

**WHEN INSTALLED IN ACCORDANCE WITH THESE INSTRUCTIONS, THE FRONT  
PROTECTION BAR DOES NOT AFFECT OPERATION OF THE SRS AIRBAG.**

### **TAKE NOTE OF THE FOLLOWING:**

- **THIS PRODUCT MUST BE INSTALLED EXACTLY AS PER THESE INSTRUCTIONS USING ONLY THE HARDWARE SUPPLIED.**
- **IN THE EVENT OF DAMAGE TO ANY BULL BAR COMPONENT, CONTACT YOUR NEAREST AUTHORISED ARB STOCKIST. REPAIRS OR MODIFICATIONS TO THE IMPACT ABSORPTION SYSTEM MUST NOT BE ATTEMPTED.**
- **DO NOT USE THIS PRODUCT FOR ANY VEHICLE MAKE OR MODEL, OTHER THAN THOSE SPECIFIED BY ARB.**
- **DO NOT REMOVE LABELS FROM THIS BULL BAR.**
- **THIS PRODUCT OR ITS FIXING MUST NOT BE MODIFIED IN ANY WAY.**

### **Note :**

- **This bull bar is suitable for Warn 9,500-16,500lb winches.**
- **Fog light provisions are in lower pan area of bull bar. IPF840FYS lights are suitable for this location.**

### **Tools Required**

Metric Spanner and Socket set	Allen key set
Phillips head screwdriver	Dia 15/64", 10.0 and 12.0mm drill bits
Electric drill 13mm chuck	Sikaflex 227 adhesive, black color

USE	PART No	QTY	DESCRIPTION
MOUNT BRACKETS TO VEHICLE	3756785L	1	BRACKET BAR MOUNT LHS
	3756785R	1	BRACKET BAR MOUNT RHS
	3199796	2	PLATE CAGE NUT
	4581049	10	M12 WASHER FLAT
	4581050	8	M12 WASHER SPRING
	6151255	6	BOLT M12 X 40
	6151244	2	BOLT M12X150
	6151189	2	NUT M12x1.75
	6151305	4	NUT M12 CAGE SUIT 4MM
	5811037	2	SLEEVE
WINCH	180302	8	CABLE TIE
TOW HOOK RELOCATION	6151365	2	EYEBOLT M24 2.5 SWL
	6151361	2	NUT M24 GR8 ZP
	3756765	2	BRACKET NUT RETAINING
	4581300	2	WASHER M24 EYEBOLT
	6151046	2	WASHER M6
	6151017	2	BOLT M6 X 16mm
	6151128	2	NUT FLANGE M6
	CONTROL BOX FITTMENT	4581291	2
	6151321	2	NUT FLANGED
	6151364	2	SCREW CAP M10X30 ZP
	3756775	1	BRACKET STD CONTROL BOX IN PAN
	3199790	1	TRIM PLATE FOR 16500LB CONTROL
	NUMBER PLATE FITTMENT	6151017	4
	6151128	4	NUT FLANGE M6
	6151046	4	WASHER M6
	3751384	1	BRACKET NO.PLATE
	WINCH COVER FITTMENT	6151128	2
	6151256	2	SCREW M6 S/STEEL BUTTON HEAD
	6151046	2	WASHER M6
	6191013	1	EXTRUSION WINCH COVER @ 1757
	6522048	1	PANEL WINCH COVER
WASHER BOTTLE PROTECTION	6131349	1	FRAME ASSY WASHR BOTTLE PROT
	6151303	2	NUT CAGED M8 SUIT 1.6-3.2
	6151022	2	BOLT M8X25
	4581044	2	WASHER FLAT M8
	4581046	2	WASHER SPR M8
	6151232	2	BOLT M10X30
	4581040	2	WASHER FLAT M10
	4581048	2	WASHER SPR M10

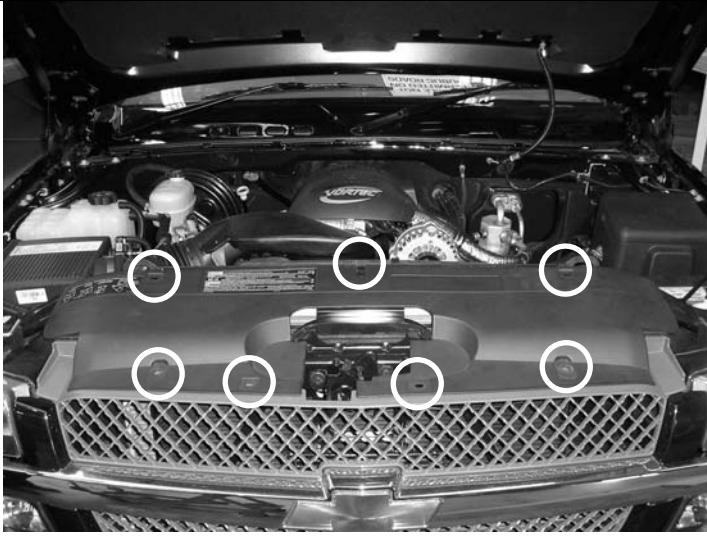


BAR TO MOUNT ASSEMBLY	6151255	6	BOLT M12 X 40mm
	4581050	6	WASHER SPRING M12
	4581049	12	WASHER FLAT M12
	4581048	2	WASHER SPRING M10
	6151321	2	NUT M10 FLANGED
	6151232	2	BOLT M10 X 30mm
	4581040	2	WASHER FLAT 3/8"
	6151189	6	NUT M12x1.75
INDICATOR ASSY	6821151R	1	INDICATOR ASSY RHS
	6821151L	1	INDICATOR ASSY LHS
	6151308	4	SCREW SELF TAPPING
	6821116	4	NUT NYLON PLUG
	6821152	2	LOOM
	180701	6	SCOTCH LOCKS
	180302	4	CABLE TIE
INNER GUARD RETAINER	3199787R	1	PLATE INNER GUARD
	3199787L	1	PLATE INNER GUARD
	6151128	4	NUT FLANGE M6
	6151213	4	SCREW M6X20 BZ
	4581082	4	WASHER M6X20 BZ

**NOTE: Shipping brackets connecting bull bar to pallet and associated fasteners are not intended to be reused in fitted bar assembly.**

## ASSEMBLY SEQUENCE FOR WINCH BUMPER.

### 1. FITTING MOUNTING BRACKETS



1.1 Remove the plastic shroud above the radiator as shown, by releasing plastic clips



1.2 To remove the grille, carefully push the retainer spring clips back out in four places behind grille. Pull outer bar from between headlights forward to release from clip into end of guard. *NOTE: It may be necessary to remove top headlights to gain access to these clips if you cannot release them easily.*



1.3 Remove bumper by undoing four bolts from above and behind bumper then two bolts securing bumper to wing support braces from under and behind forward of wheel arch area.



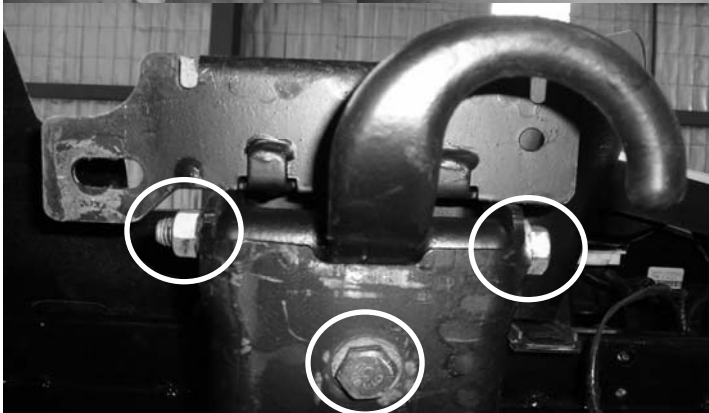
1.4 Remove stabilizer arms both sides



1.5 Remove plastic shrouds around chassis

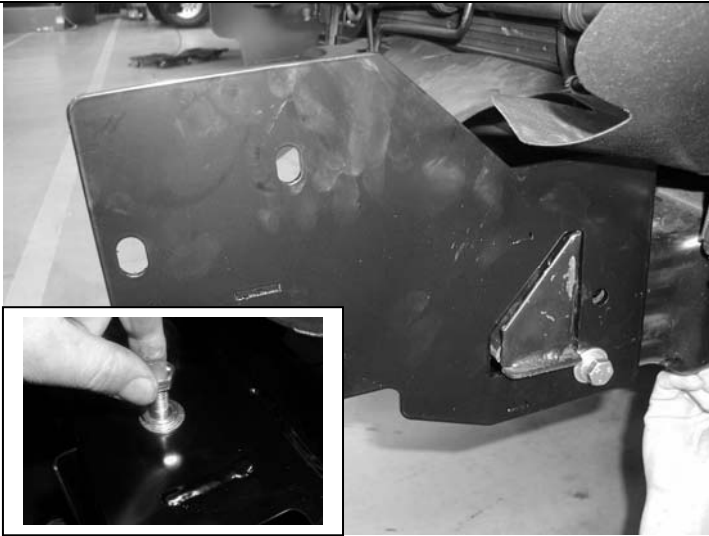


1.6 Remove tow hooks

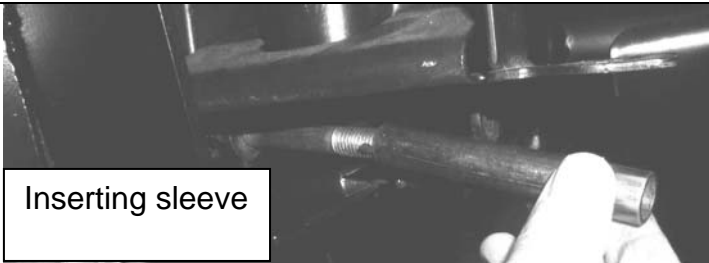




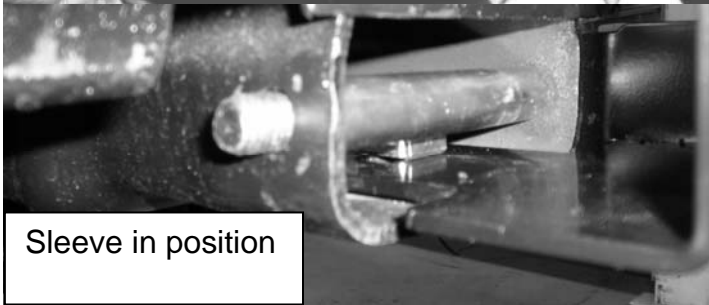
1.7 Fit cage nuts to bracket tangs as shown



1.8 Position the mount brackets as shown on the ends of the chassis rails (LHS shown). Loosely fit an M12 bolt and washer set to top bolt position and lower position as shown finger tight only.

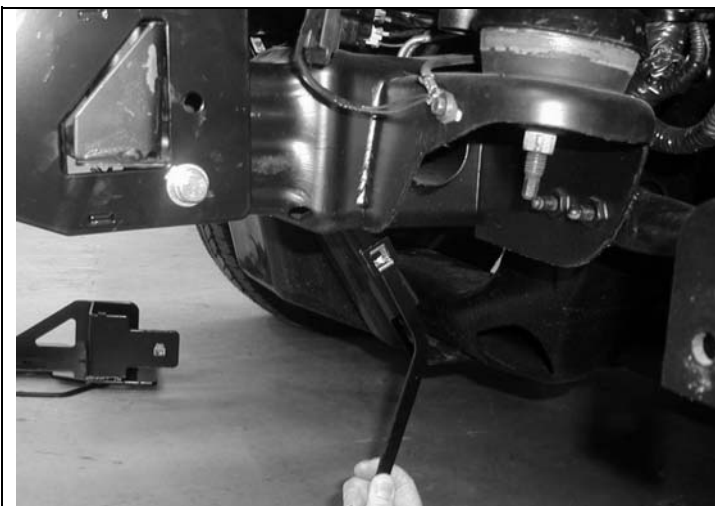


Inserting sleeve



Sleeve in position

1.9 Partly withdraw M12 x 150 bolt and fit crush sleeve over bolt body inside chassis as shown. Fit flat and spring washers, and nut. Do not tighten.



1.10 Fit M12 cage nuts to both bent plates, 1 x LH and 1 x RH as assemblies are opposite for each side of vehicle. Insert nut assembly through large hole in underside of chassis and up to meet vacant hole above long bolt. Insert M12 bolt and washer set, do up finger tight.



1.14 Check that brackets are parallel to each other, if not adjust. When parallel then tighten all bolts (nominal outside dimension across brackets is 898mm).  
Fit grille and shroud back into position.

## 2. PREPARING BULL BAR FOR FITTING



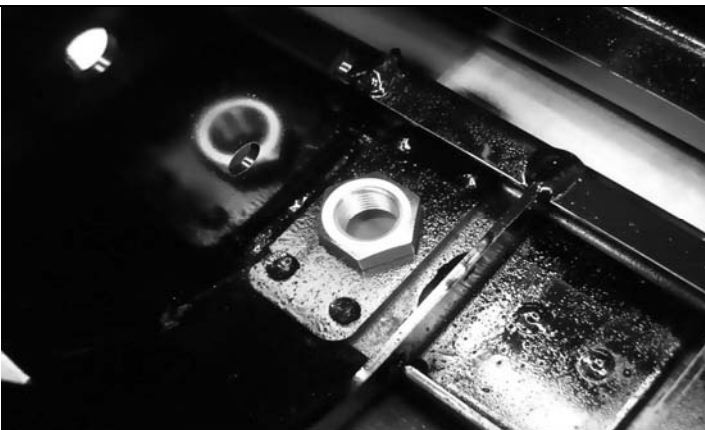
2.1 Remove lights from cartons and then remove screws and speed nuts from each light. These fasteners are not to be reused – new screws are supplied in the fitting kit.



2.2 Insert nylon nuts into square holes in light brackets inside wing area



2.3 Fit lights using screws supplied in fitting kit, taking note of RH and LH light bodies, they are different and must be placed on the correct side of bull bar.

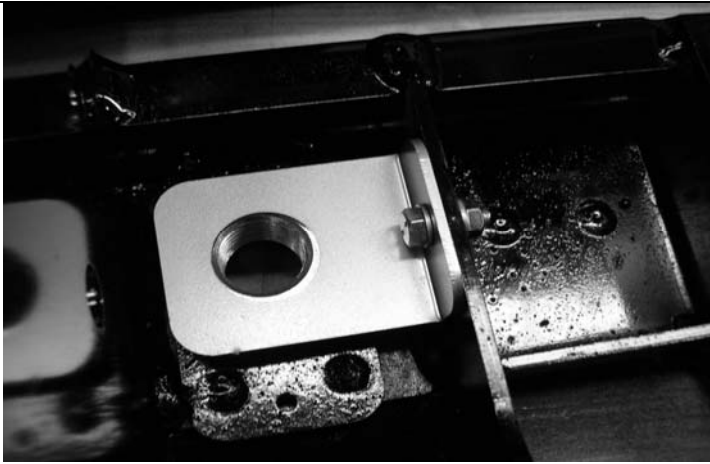


2.4 Fit large eyebolt nut into the plate on the inside of the bar.



2.5 Screw in the eyebolt using the large washer. Eyebolt can be positioned to sit vertically by rotating the large nut to the correct position.

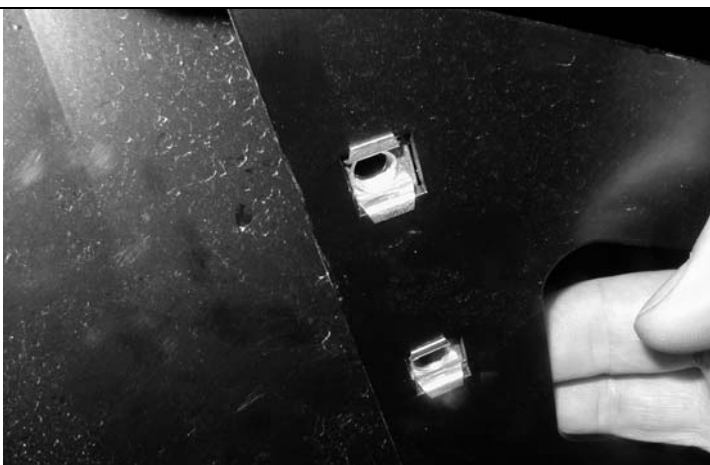
**NOTE: EYEBOLTS SHOULD BE REMOVED FOR SAFETY REASONS WHEN TRAVELLING ON PUBLIC ROADS.**



2.6 When the large nut is in its final position, secure with the nut retaining bracket using an M6 bolt, washer and flange nut.

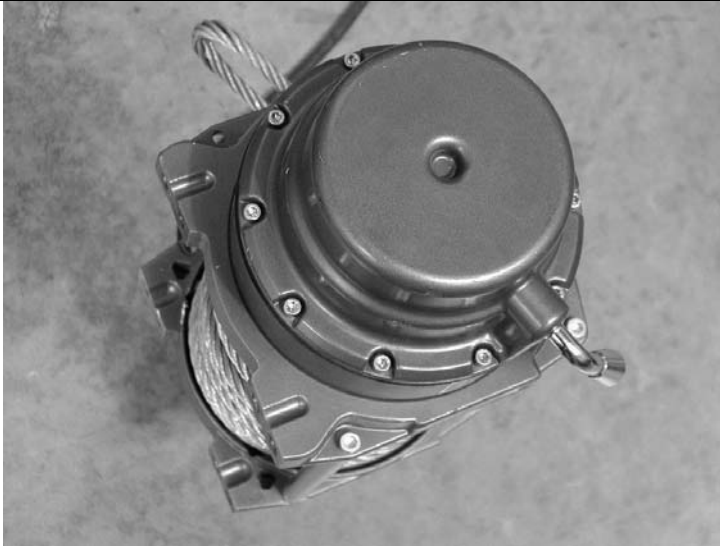


2.7 Secure the number plate bracket using M6 bolts, flat washers and flange nuts. Attach the longer flange to the bullbar and the shorter flange to the number plate.



2.8 Fit the M8 cage nuts to the square holes in the wing brace on the LHS (washer bottle side) of the bull bar. The body of the cage nuts are to be on the inside of the brace. These nuts are to be used to fasten the washer bottle protection arm to the bull bar.

### 3. IF FITTING WINCH



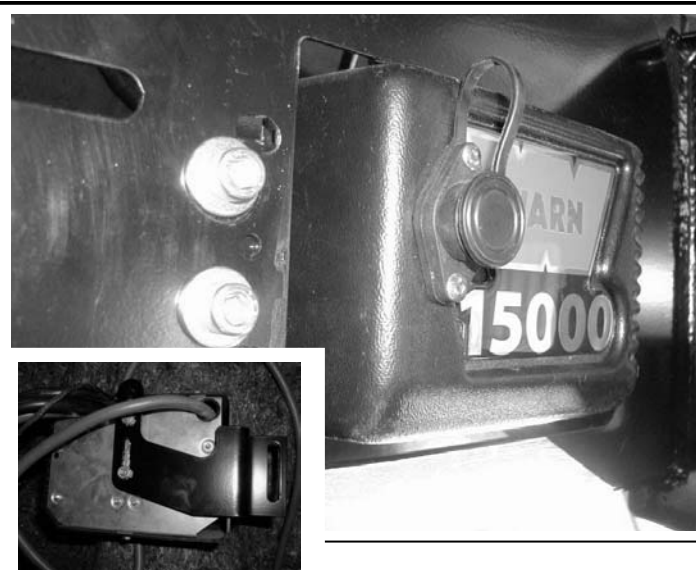
3.1 From the factory the winch handle should be in the position as shown.

Remove cable retaining band and position cable loop so it will go through roller fairlead when it is placed in bull bar.



#### 3.2 Fit control box to pan:

- For 9500-12000lb winches, use universal control box bracket supplied, attaching to rear of control box mount studs.
- Slide bracket flange under pan and align with mount slots.
- Fasten in position with 2 x M10 cap screws, black washers and flange nuts.

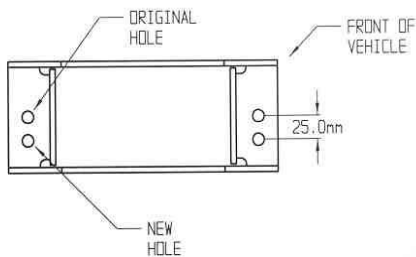


- For 15000lb winches, use Warn supplied control box bracket, attaching to rear of control box mount studs.
- Slide bracket flange under pan and align with mount slots.
- Fasten in position with 2 x M10 cap screws, black washers and flange nuts.



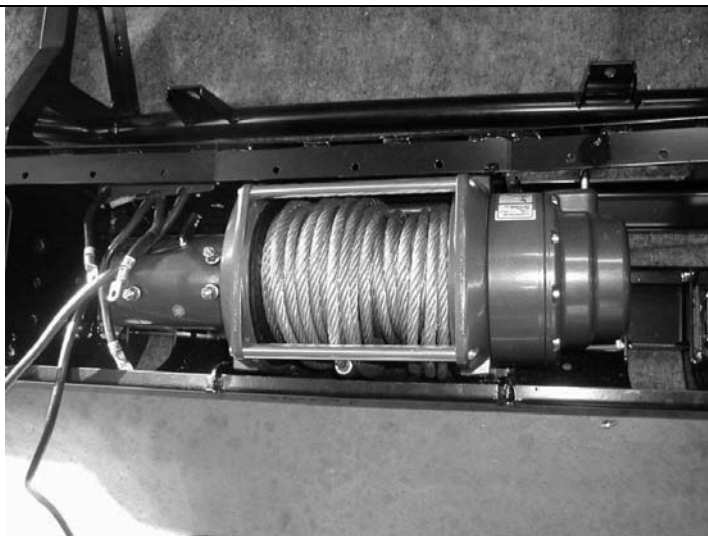


- For 16500lb winches, apply Sikaflex (or similar product) to rear of control box trim plate from fitting kit (note orientation critical to suit final position with control box profile in pan opening).
- Position trim plate on top of pan centrally about control box opening and line up with mount slots.
- Fasten in position with 2 x M10 cap screws and flange nuts from fitting kit.



3.3 On some models, the roller fair lead must be drilled prior to fitment.

Mark out as shown and using a 13.0 mm drill bit, drill two holes as shown in diagram.



3.4 Viewed from front of vehicle the winch clutch (handle) must be positioned on the LH side (same side as smaller square access hole in pan). Cable must spool from the bottom of winch. Draw off enough cable so cable crimp can be pulled through roller fairlead.

*Hint: If crimp is too large to fit through, remove a circlip from a horizontal roller, partially remove the shaft so roller gap is increased and feed cable and crimp through. Refit shaft and circlip.*

Bolt winch in position with the roller fair lead in place.

*Hint: To increase access to mount bolts in front of roller fairlead, remove circlips from bottom of each vertical roller shaft, push shaft up so roller can be dislodged sideways. Do up bolts in fairlead and winch, then refit circlip.*

Connect the winch control box cables to the winch motor. Refer to the Warn handbook for additional information. Connect the long winch + & - cables to the vehicle **after** the bar is installed. **Refer to the Warn winch manual for vehicle wiring instructions.**



**Fitting with winch, number plate above RFL**



**Fitting without winch, number plate covers RFL opening**

3.5

**Fitting number plate – with winch**

Bolt number plate to the bracket with the M6 X 16mm bolts and M6 flange nuts through the lower holes of the number plate.

**If not fitting winch.**

Bolt the number plate through the top holes using M6 X 16mm bolts and M6 flange nuts.



3.6 **If not fitting winch cont.**

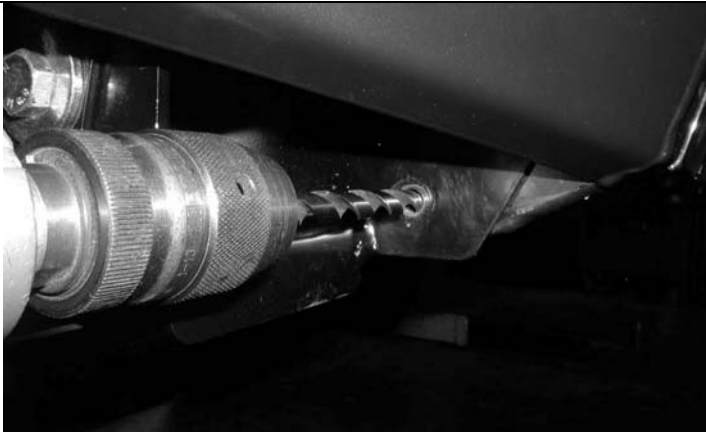
Wrap rubber extrusion around winch cover.

Place washers over the winch cover fixing holes located on the top middle face of the winch bumper.

Place the winch cover on top of the winch bumper inline with the mount holes.

Bolt together using the M6 button head stainless steel screws and M6 nuts.

## 4. FITTING BULL BAR TO VEHICLE



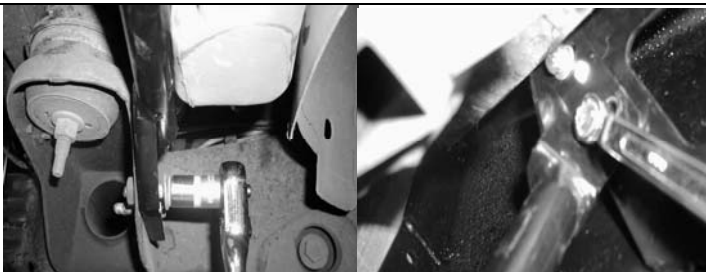
4.1 Using two people, three if winch fitted, position the bar assembly on the vehicle mounts.

Bolt the bar to the mounts using M12 bolts, large flat washers and spring washers. Align the bar to the profile of the guards, grille and light profile and tighten all bolts.

Using the M10 pilot holes in mount brackets, drill pinning hole through uprights on bull bar. Fit M10 screw, washer set and flange nut and do up tight.



4.2 Trim excess plastic inner guard molding to meet lower profile of bull bar wing. Note the position of water bottle on LHS of vehicle and trim neatly around it.



4.3 Fit washer bottle protection frame to lower mounts where original bumper stabiliser arms were located using 2 x M10 x 30 bolt and washer sets. Fit off the upper bracket to inner wing area of bull bar as shown using M8 x 25 bolts and washer sets.

NOTE: The 2 x M8 cage nuts should be in place from step 2.7.



4.4 Fit inner guard plates to ends of bull bar wings and fasten with M6 black screws and washers.



#### 4.5 ***If fitting with winch***

With the winch cable through the roller fair lead. Mount the hook to the end of the cable.



#### 4.6 Wire up the indicator and clearance lamp assemblies. Use scotch locks to splice cables to existing indicator and clearance lamp wiring and cable tie securely.

If fog lights are to be installed, mount positions are on lower pan area between winch opening and high lift jack position.

#### **Refer to the Warn winch manual for vehicle wiring instructions.**

Ensure that electrical cables are installed well clear of sharp, hot or moving objects. Secure the winch cables to the vehicle and winch bumper with the supplied cable ties.





# FITTING INSTRUCTIONS

**ARB COMBINATION WINCH, NON-WINCH BULL BAR TO SUIT  
CHEVROLET SILVERADO 03 ON 1500HD-2500 MODELS.**

**PRODUCT No. 3462020, WITH FITTING KIT 3562050**

## **WARNING**

### **FOR VEHICLES EQUIPPED WITH SRS AIRBAG**

**WHEN INSTALLED IN ACCORDANCE WITH THESE INSTRUCTIONS, THE FRONT  
PROTECTION BAR DOES NOT AFFECT OPERATION OF THE SRS AIRBAG.**

### **TAKE NOTE OF THE FOLLOWING:**

- **THIS PRODUCT MUST BE INSTALLED EXACTLY AS PER THESE INSTRUCTIONS USING ONLY THE HARDWARE SUPPLIED.**
- **IN THE EVENT OF DAMAGE TO ANY BULL BAR COMPONENT, CONTACT YOUR NEAREST AUTHORISED ARB STOCKIST. REPAIRS OR MODIFICATIONS TO THE IMPACT ABSORPTION SYSTEM MUST NOT BE ATTEMPTED.**
- **DO NOT USE THIS PRODUCT FOR ANY VEHICLE MAKE OR MODEL, OTHER THAN THOSE SPECIFIED BY ARB.**
- **DO NOT REMOVE LABELS FROM THIS BULL BAR.**
- **THIS PRODUCT OR ITS FIXING MUST NOT BE MODIFIED IN ANY WAY.**

### **Note :**

- **This bull bar is suitable for Warn 9,500-16,500lb winches.**
- **Fog light provisions are in lower pan area of bull bar. IPF840FYS lights are suitable for this location.**

### **Tools Required**

Metric Spanner and Socket set	Allen key set
Phillips head screwdriver	Dia 15/64", 10.0 and 12.0mm drill bits
Electric drill 13mm chuck	Sikaflex 227 adhesive, black color

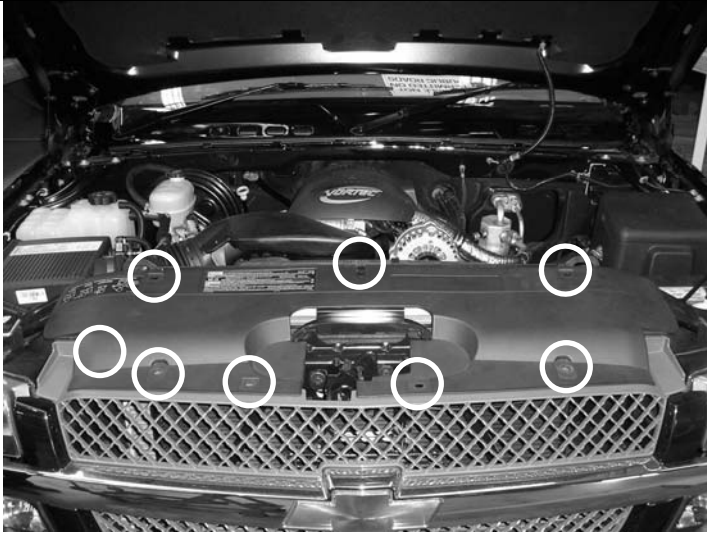
USE	PART No	QTY	DESCRIPTION
MOUNT BRACKETS TO VEHICLE	3756786L	1	BRACKET BAR MOUNT LHS
	3756786R	1	BRACKET BAR MOUNT RHS
	4581060	2	WASHER 13X30X3
	4581049	12	M12 WASHER FLAT
	4581050	8	M12 WASHER SPRING
	6151255	8	BOLT M12 X 40
	6151189	6	NUT M12x1.75
	5848316	2	PACKER
WINCH	180302	8	CABLE TIE
TOW HOOK RELOCATION	6151365	2	EYEBOLT M24 2.5 SWL
	6151361	2	NUT M24 GR8 ZP
	3756765	2	BRACKET NUT RETAINING
	4581300	2	WASHER M24 EYEBOLT
	6151046	2	WASHER M6
	6151017	2	BOLT M6 X 16mm
	6151128	2	NUT FLANGE M6
CONTROL BOX FITTMENT	4581291	2	WASHER M10 BZ
	6151321	2	NUT FLANGED
	6151364	2	SCREW CAP M10X30 ZP
	3756775	1	BRACKET STD CONTROL BOX IN PAN
	3199790	1	TRIM PLATE FOR 16500LB CONTROL
NUMBER PLATE FITTMENT	6151017	4	BOLT M6 X 16mm
	6151128	4	NUT FLANGE M6
	6151046	4	WASHER M6
	3751384	1	BRACKET NO.PLATE
WINCH COVER FITTMENT	6151128	2	NUT FLANGE M6
	6151256	2	SCREW M6 S/STEEL BUTTON HEAD
	6151046	2	WASHER M6
	6191013	1	EXTRUSION WINCH COVER @ 1757
	6522048	1	PANEL WINCH COVER
WASHER BOTTLE PROTECTION	6131349	1	FRAME ASSY WASHR BOTTLE PROT
	6151303	2	NUT CAGED M8 SUIT 1.6-3.2
	6151022	2	BOLT M8X25
	4581044	2	WASHER FLAT M8
	4581046	2	WASHER SPR M8
	6151232	2	BOLT M10X30
	4581040	2	WASHER FLAT M10
	4581048	2	WASHER SPR M10

BAR TO MOUNT ASSEMBLY	6151255	6	BOLT M12 X 40mm
	4581050	6	WASHER SPRING M12
	4581049	12	WASHER FLAT M12
	4581048	2	WASHER SPRING M10
	6151321	2	NUT M10 FLANGED
	6151232	2	BOLT M10 X 30mm
	4581040	2	WASHER FLAT 3/8"
	6151189	6	NUT M12x1.75
INDICATOR ASSY	6821151R	1	INDICATOR ASSY RHS
	6821151L	1	INDICATOR ASSY LHS
	6151308	4	SCREW SELF TAPPING
	6821116	4	NUT NYLON PLUG
	6821152	2	LOOM
	180701	6	SCOTCH LOCKS
	180302	4	CABLE TIE
INNER GUARD RETAINER	3199787R	1	PLATE INNER GUARD
	3199787L	1	PLATE INNER GUARD
	6151128	4	NUT FLANGE M6
	6151213	4	SCREW M6X20 BZ
	4581082	4	WASHER M6X20 BZ

**NOTE: Shipping brackets connecting bull bar to pallet and associated fasteners are not intended to be reused in fitted bar assembly.**

## ASSEMBLY SEQUENCE FOR WINCH BUMPER.

### 1. FITTING MOUNTING BRACKETS



1.1 Remove plastic shroud above radiator as shown, by releasing plastic clips



1.2 To remove the grille, carefully push the retainer spring clips back out in four places behind grille. Pull outer bar from between headlights forward to release from clip into end of guard. *NOTE: It may be necessary to remove top headlights to gain access to these clips if you cannot release them easily.*



1.3 Remove bumper by undoing four bolts from above and behind bumper then two bolts securing bumper to wing support braces from under and behind forward of wheel arch area.





1.4 Remove and replace tow hooks on opposite chassis sides. Note, the hole underneath the chassis may need to be elongated to allow the bolt to fit into the rear underside position. Leave the outer bolt off.



1.5 Fit the mount brackets as shown, to the end of the chassis rails, top M12 bolt and washer set as shown finger tight only.

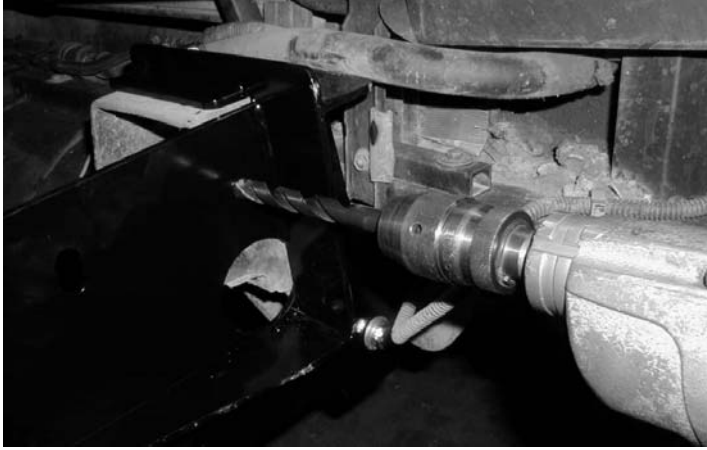


1.6 Slide in 'L' shaped packer oriented as shown



1.7 Fit M12 bolt, spring washer and Dia 13.0x30x3 large washer into tow hook thread, insert M12 bolt and washer set in pinning hole to line up packer hole. Tighten up lower bolt.

Remove loose bolt from pinning hole and drill through using Dia12.0 drill. Then insert and do up M12 bolt set.



1.8 Drill pinning hole in top position as shown then insert and do up M12 bolt set.



1.9 Tighten up all bolts



1.10 Check that tops of brackets are horizontal and that brackets are parallel to each other. If not release bolts and make necessary adjustments.

Refit grille and shroud.

## 2. PREPARING BULL BAR FOR FITTING



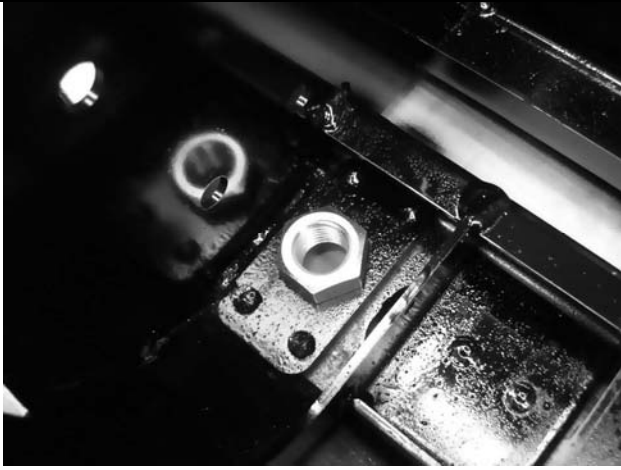
2.1 Remove lights from cartons and then remove screws and speed nuts from each light. These fasteners are not to be reused – new screws are supplied in the fitting kit.



2.2 Insert nylon nuts into square holes in light brackets inside wing area



2.3 Fit lights using screws supplied in fitting kit, taking note of RH and LH light bodies, they are different and must be placed on the correct side of bull bar.

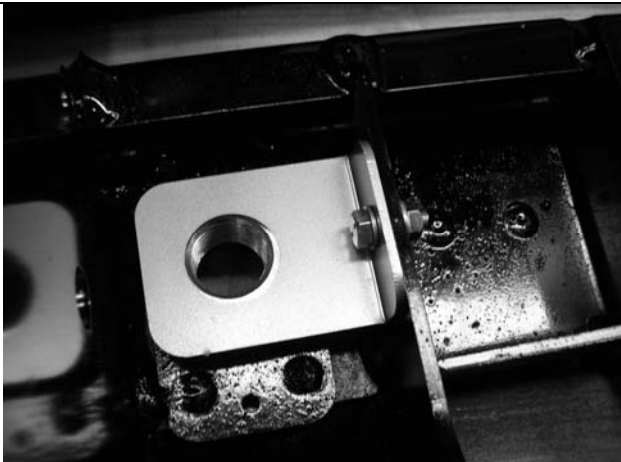


2.4 Fit large eye bolt nut into the plate on the inside of the bar.



2.5 Screw in the eye bolt using the large washer. Eye bolt can be positioned to sit vertically by rotating the large nut to the correct position.

***NOTE: EYEBOLTS SHOULD BE REMOVED FOR SAFETY REASONS WHEN TRAVELLING ON PUBLIC ROADS.***

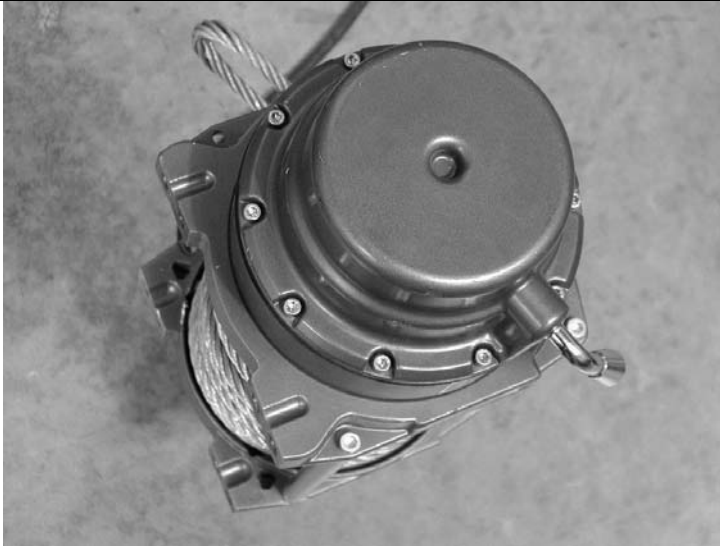


2.6 When the large nut is in its final position, secure with the nut retaining bracket using an M6 bolt, washer and flange nut.



2.7 Secure the number plate bracket using M6 bolts, flat washers and flange nuts. Attach the longer side to the bullbar and the shorter side to the number plate.

### 3. IF FITTING WINCH



3.1 From the factory the winch handle should be in the position as shown.

Remove cable retaining band and position cable loop so it will go through roller fairlead when it is placed in bull bar.



#### 3.2 Fit control box to pan:

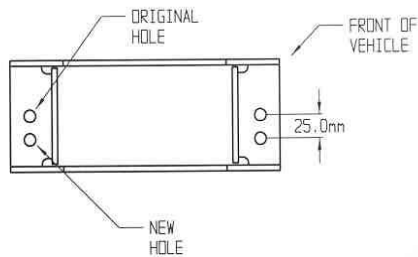
- For 9500-12000lb winches, use universal control box bracket supplied, attaching to rear of control box mount studs.
- Slide bracket flange under pan and align with mount slots.
- Fasten in position with 2 x M10 cap screws, black washers and flange nuts.



- For 15000lb winches, use Warn supplied control box bracket, attaching to rear of control box mount studs.
- Slide bracket flange under pan and align with mount slots.
- Fasten in position with 2 x M10 cap screws, black washers and flange nuts.

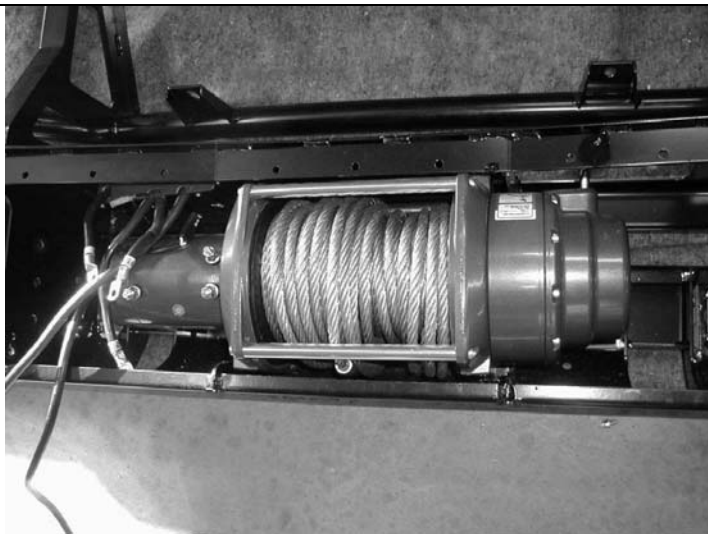


- For 16500lb winches, apply Sikaflex (or similar product) to rear of control box trim plate from fitting kit (note orientation critical to suit final position with control box profile in pan opening).
- Position trim plate on top of pan centrally about control box opening and line up with mount slots.
- Fasten in position with 2 x M10 cap screws and flange nuts from fitting kit.



3.3 On some models, the roller fair lead must be drilled prior to fitment.

Mark out as shown and using a 13.0 mm drill bit, drill two holes as shown in diagram.



3.4 Viewed from front of vehicle the winch clutch (handle) must be positioned on the LH side (same side as smaller square access hole in pan). Cable must spool from the bottom of winch. Draw off enough cable so cable crimp can be pulled through roller fairlead.

*Hint: If crimp is too large to fit through, remove a circlip from a horizontal roller, partially remove the shaft so roller gap is increased and feed cable and crimp through. Refit shaft and circlip.*

Bolt winch in position with the roller fair lead in place.

*Hint: To increase access to mount bolts in front of roller fairlead, remove circlips from bottom of each vertical roller shaft, push shaft up so roller can be dislodged sideways. Do up bolts in fairlead and winch, then refit circlip.*

Connect the winch control box cables to the winch motor. Refer to the Warn handbook for additional information. Connect the long winch + & - cables to the vehicle after the bar is installed. **Refer to the Warn winch manual for vehicle wiring instructions.**



Fitting with winch, number plate above RFL



Fitting without winch, number plate covers RFL opening

3.5

**Fitting number plate – with winch**

Bolt number plate to the bracket with the M6 X 16mm bolts and M6 flange nuts through the lower holes of the number plate.

**If not fitting winch.**

Bolt the number plate through the top holes using M6 X 16mm bolts and M6 flange nuts.



3.6 **If not fitting winch cont.**

Wrap rubber extrusion around winch cover.

Place washers over the winch cover fixing holes located on the top middle face of the winch bumper.

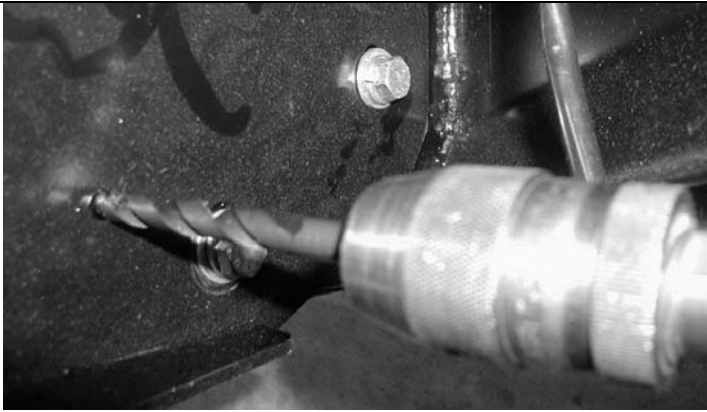
Place the winch cover on top of the winch bumper inline with the mount holes.

Bolt together using the M6 button head stainless steel screws and M6 nuts.



3.7 Fit the M8 cage nuts to the square holes in the wing brace on the LHS (washer bottle side) of the bull bar. The body of the cage nuts are to be on the inside of the brace. These nuts are to be used to fasten the washer bottle protection arm to the bull bar.

## 4. FITTING BULL BAR TO VEHICLE



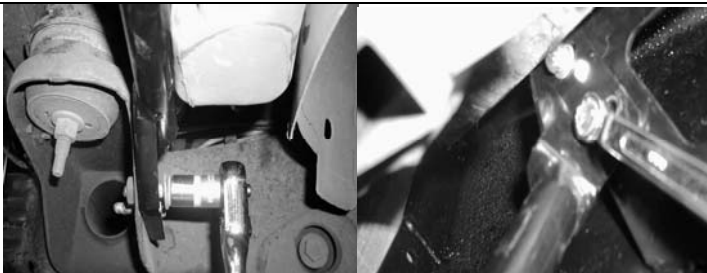
4.1 Using two people, three if winch fitted, position the bar assembly on the vehicle mounts.

Bolt the bar to the mounts using M12 bolts, large flat washers and spring washers. Align the bar to the profile of the guards, grille and light profile and tighten all bolts.

Using the M10 pilot holes in mount brackets, drill pinning hole through uprights on bull bar. Fit M10 screw, washer set and flange nut and do up tight.



4.2 Trim excess plastic inner guard molding to meet lower profile of bull bar wing. Note the position of water bottle on LHS of vehicle and trim neatly around it.



4.3 Fit washer bottle protection frame to lower mounts where original bumper stabiliser arms were located using 2 x M10 x 30 bolt and washer sets. Fit off the upper bracket to inner wing area of bull bar as shown using M8 x 25 bolts and washer sets.

NOTE: The 2 x M8 cage nuts should be in place from step 2.7.





4.4 Fit inner guard plates to ends of bull bar wings and fasten with M6 black screws and washers.



4.5 **If fitting with winch**

With the winch cable through the roller fair lead. Mount the hook to the end of the cable.



4.6 Wire up the indicator and clearance lamp assemblies. Use scotch locks to splice cables to existing indicator and clearance lamp wiring and cable tie securely.

If fog lights are to be installed, mount positions are on lower pan area between winch opening and high lift jack position.

**Refer to the Warn winch manual for vehicle wiring instructions.**

Ensure that electrical cables are installed well clear of sharp, hot or moving objects. Secure the winch cables to the vehicle and winch bumper with the supplied cable ties.





# **FITTING INSTRUCTIONS**

**ARB COMBINATION WINCH, NON-WINCH BULL BAR TO SUIT CHEVROLET SILVERADO 03 ON 2500HD-3500 MODELS.**

**PRODUCT No. 3462020, WITH FITTING KIT 3562060**

## **WARNING**

### **FOR VEHICLES EQUIPPED WITH SRS AIRBAG**

**WHEN INSTALLED IN ACCORDANCE WITH THESE INSTRUCTIONS, THE FRONT PROTECTION BAR DOES NOT AFFECT OPERATION OF THE SRS AIRBAG.**

### **TAKE NOTE OF THE FOLLOWING:**

- **THIS PRODUCT MUST BE INSTALLED EXACTLY AS PER THESE INSTRUCTIONS USING ONLY THE HARDWARE SUPPLIED.**
- **IN THE EVENT OF DAMAGE TO ANY BULL BAR COMPONENT, CONTACT YOUR NEAREST AUTHORISED ARB STOCKIST. REPAIRS OR MODIFICATIONS TO THE IMPACT ABSORPTION SYSTEM MUST NOT BE ATTEMPTED.**
- **DO NOT USE THIS PRODUCT FOR ANY VEHICLE MAKE OR MODEL, OTHER THAN THOSE SPECIFIED BY ARB.**
- **DO NOT REMOVE LABELS FROM THIS BULL BAR.**
- **THIS PRODUCT OR ITS FIXING MUST NOT BE MODIFIED IN ANY WAY.**

### **Note :**

- **This bull bar is suitable for Warn 9,500-16,500lb winches.**
- **Fog light provisions are in lower pan area of bull bar. IPF840FYS lights are suitable for this location.**

### **Tools Required**

Metric Spanner and Socket set	Allen key set
Phillips head screwdriver	Dia 5.5, 10.0 and 12.0mm drill bits
Electric drill 13mm chuck	Sikaflex 227 adhesive, black color

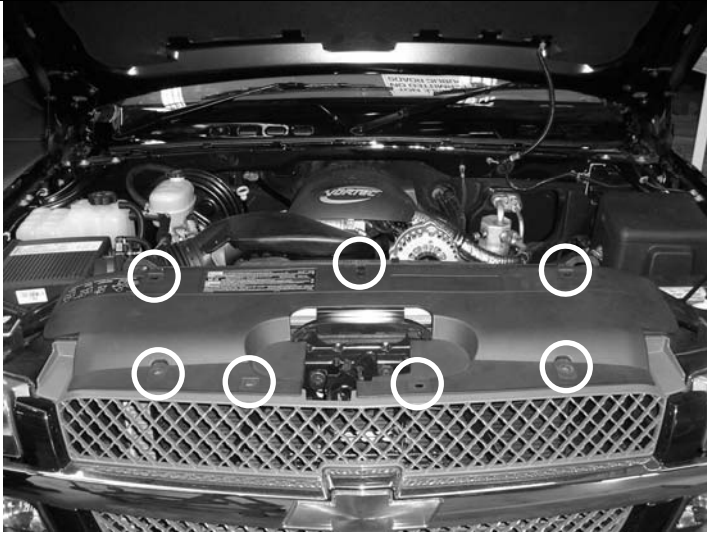
<b>USE</b>	<b>PART No</b>	<b>QTY</b>	<b>DESCRIPTION</b>
MOUNT BRACKETS TO VEHICLE	3756787L	1	BRACKET BAR MOUNT LHS
	3756787R	1	BRACKET BAR MOUNT RHS
	4581060	2	WASHER 13X30X3
	4581049	14	M12 WASHER FLAT
	4581050	8	M12 WASHER SPRING
	6151255	8	BOLT M12 X 40
	6151189	6	NUT M12x1.75
	5848316	2	PACKER
WINCH	180302	8	CABLE TIE
TOW HOOK RELOCATION	6151365	2	EYEBOLT M24 2.5 SWL
	6151361	2	NUT M24 GR8 ZP
	3756765	2	BRACKET NUT RETAINING
	4581300	2	WASHER M24 EYEBOLT
	6151046	2	WASHER M6
	6151017	2	BOLT M6 X 16mm
	6151128	2	NUT FLANGE M6
CONTROL BOX FITTMENT	4581291	2	WASHER M10 BZ
	6151321	2	NUT FLANGED
	6151364	2	SCREW CAP M10X30 ZP
	3756775	1	BRACKET STD CONTROL BOX IN PAN
	3199790	1	TRIM PLATE FOR 16500LB CONTROL
NUMBER PLATE FITTMENT	6151017	4	BOLT M6 X 16mm
	6151128	4	NUT FLANGE M6
	6151046	4	WASHER M6
	3751384	1	BRACKET NO.PLATE
WINCH COVER FITTMENT	6151128	2	NUT FLANGE M6
	6151256	2	SCREW M6 S/STEEL BUTTON HEAD
	6151046	2	WASHER M6
	6191013	1	EXTRUSION WINCH COVER @ 1757
	6522048	1	PANEL WINCH COVER

BAR TO MOUNT ASSEMBLY	6151255	6	BOLT M12 X 40mm
	4581050	6	WASHER SPRING M12
	4581049	12	WASHER FLAT M12
	4581048	2	WASHER SPRING M10
	6151321	2	NUT M10 FLANGED
	6151232	2	BOLT M10 X 30mm
	4581040	2	WASHER FLAT 3/8"
	6151189	4	NUT M12x1.75
INDICATOR ASSY	6821151R	1	INDICATOR ASSY RHS
	6821151L	1	INDICATOR ASSY LHS
	6151308	4	SCREW SELF TAPPING
	6821116	4	NUT NYLON PLUG
	6821152	2	LOOM
	180701	6	SCOTCH LOCKS
	180302	4	CABLE TIE
	INNER GUARD RETAINER	3199787R	1
3199787L		1	PLATE INNER GUARD
6151128		4	NUT FLANGE M6
6151213		4	SCREW M6X20 BZ
4581082		4	WASHER M6X20 BZ

**NOTE: Shipping brackets connecting bull bar to pallet and associated fasteners are not intended to be reused in fitted bar assembly.**

## ASSEMBLY SEQUENCE FOR WINCH BUMPER.

### 1. FITTING MOUNTING BRACKETS



1.1 Remove plastic shroud above radiator as shown, by releasing plastic clips



1.2 To remove the grille, carefully push the retainer spring clips back out in four places behind grille. Pull outer bar from between headlights forward to release from clip into end of guard. *NOTE: It may be necessary to remove top headlights to gain access to these clips if you cannot release them easily*



1.3 Remove bumper by undoing four bolts from above and behind bumper then two bolts securing bumper to wing support braces from under and behind forward of wheel arch area.



1.4 Remove and replace tow hooks on opposite chassis sides. Note, the hole underneath the chassis may need to be elongated to allow the bolt to fit into the rear underside position. Leave the outer bolt off.



1.5 Fit the mount brackets as shown, to the end of the chassis rails, top M12 bolt and washer set as shown finger tight only.



1.6 Slide in 'L' shaped packer oriented as shown

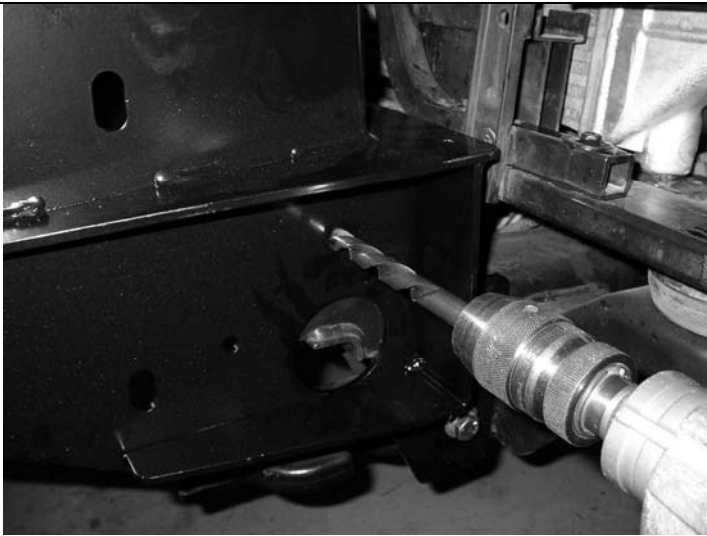


1.7 Fit M12 bolt, spring washer and Dia 13.0x30x3 large washer into tow hook thread, insert M12 bolt and washer set in pinning hole to line up packer hole. Tighten up lower bolt.

Remove loose bolt from pinning hole and drill through using Dia12.0 drill. Then insert and do up M12 bolt set.



1.8 Remove loose bolt from pinning hole and drill through using Dia12.0 drill. Then insert and do up M12 bolt set.



1.9 Drill pinning hole in top position as shown then insert and do up M12 bolt set.



1.10 Tighten up all bolts



## 2. PREPARING BULL BAR FOR FITTING



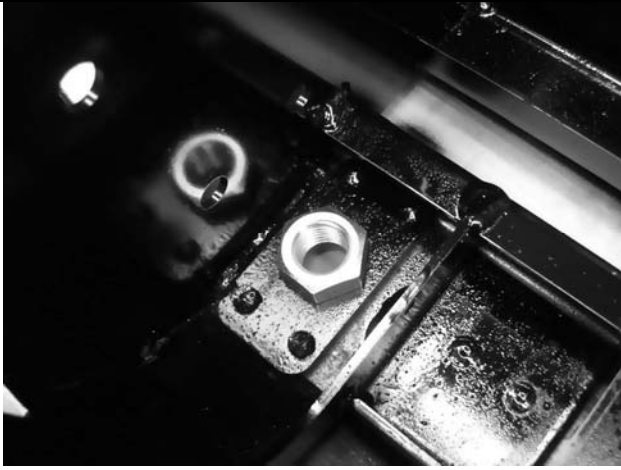
2.1 Remove lights from cartons and then remove screws and speed nuts from each light. These fasteners are not to be reused – new screws are supplied in the fitting kit.



2.2 Insert nylon nuts into square holes in light brackets inside wing area



2.3 Fit lights using screws supplied in fitting kit, taking note of RH and LH light bodies, they are different and must be placed on the correct side of bull bar.

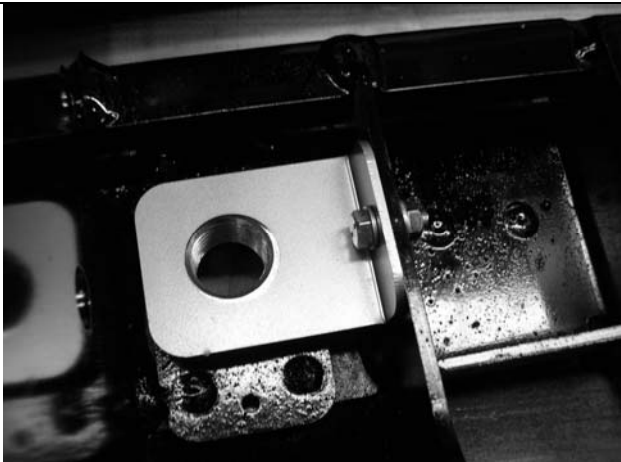


2.4 Fit large eye bolt nut into the plate on the inside of the bar.



2.5 Screw in the eye bolt using the large washer. Eye bolt can be positioned to sit vertically by rotating the large nut to the correct position.

**NOTE: EYEBOLTS SHOULD BE REMOVED FOR SAFETY REASONS WHEN TRAVELLING ON PUBLIC ROADS.**

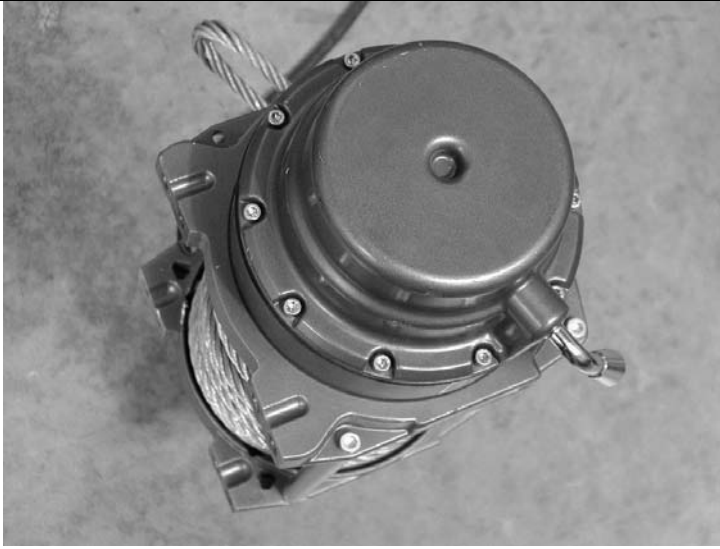


2.6 When the large nut is in its final position, secure with the nut retaining bracket using an M6 bolt, washer and flange nut.



2.7 Secure the number plate bracket using M6 bolts, flat washers and flange nuts. Attach the longer side to the bullbar and the shorter side to the number plate.

### 3. IF FITTING WINCH



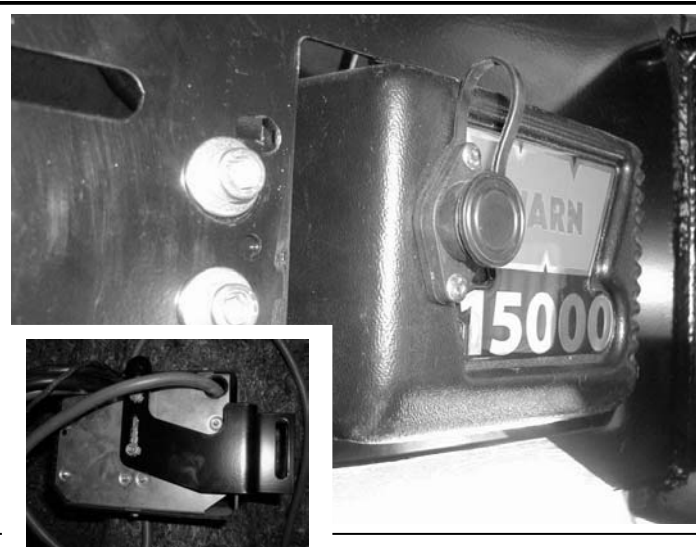
3.1 As supplied the winch handle should be in the position as shown.

Remove cable retaining band and position cable loop so it will go through roller fairlead when it is placed in bull bar.



#### 3.2 Fit control box to pan:

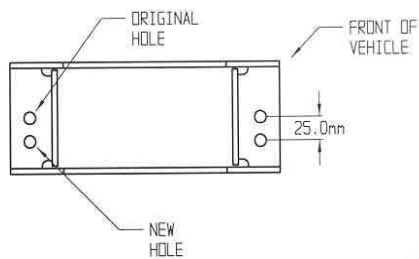
- For 9500-12000lb winches, use universal control box bracket supplied, attaching to rear of control box mount studs.
- Slide bracket flange under pan and align with mount slots.
- Fasten in position with 2 x M10 cap screws, black washers and flange nuts.



- For 15000lb winches, use Warn supplied control box bracket, attaching to rear of control box mount studs.
- Slide bracket flange under pan and align with mount slots.
- Fasten in position with 2 x M10 cap screws, black washers and flange nuts.

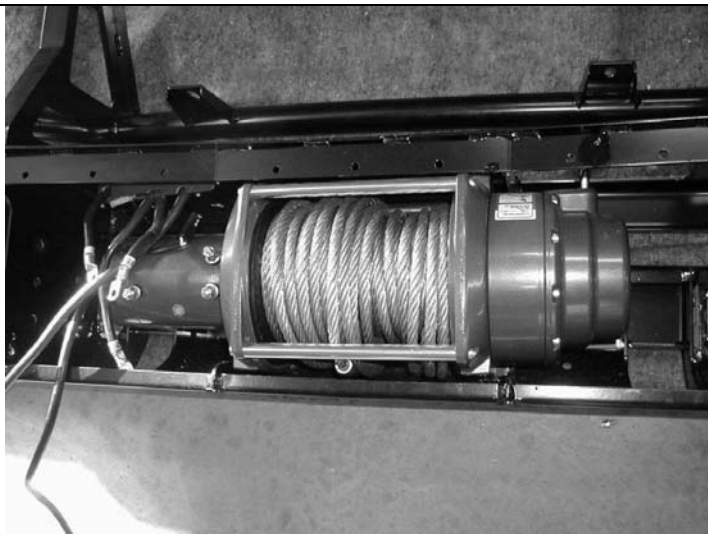


- For 16500lb winches, apply Sikaflex (or similar product) to rear of control box trim plate from fitting kit (note orientation critical to suit final position with control box profile in pan opening).
- Position trim plate on top of pan centrally about control box opening and line up with mount slots.
- Fasten in position with 2 x M10 cap screws and flange nuts from fitting kit.



3.3 On some models, the roller fair lead must be drilled prior to fitment.

Mark out as shown and using a 13.0 mm drill bit, drill two holes as shown in diagram.



3.4 Viewed from front of vehicle the winch clutch (handle) must be positioned on the LH side (same side as smaller square access hole in pan). Cable must spool from the bottom of winch. Draw off enough cable so cable crimp can be pulled through roller fairlead.

*Hint: If crimp is too large to fit through, remove a circlip from a horizontal roller, partially remove the shaft so roller gap is increased and feed cable and crimp through. Refit shaft and circlip.*

Bolt winch in position with the roller fair lead in place.

*Hint: To increase access to mount bolts in front of roller fairlead, remove circlips from bottom of each vertical roller shaft, push shaft up so roller can be dislodged sideways. Do up bolts in fairlead and winch, then refit circlip.*

Connect the winch control box cables to the winch motor. Refer to the Warn handbook for additional information. Connect the long winch + & - cables to the vehicle after the bar is installed. **Refer to the Warn winch manual for vehicle wiring instructions.**



**Fitting with winch, number plate above RFL**



**Fitting without winch, number plate covers RFL opening**

### 3.5 **Fitting number plate – with winch**

Bolt number plate to the bracket with the M6 X 16mm bolts and M6 flange nuts through the lower holes of the number plate.

#### **If not fitting winch.**

Bolt the number plate through the top holes using M6 X 16mm bolts and M6 flange nuts.



### 3.6 **If not fitting winch cont.**

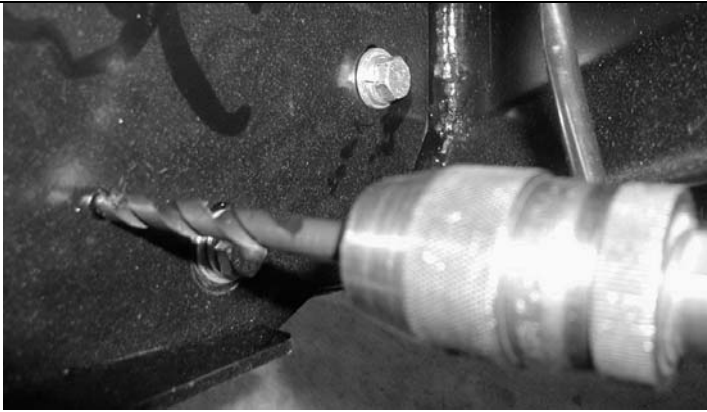
Wrap rubber extrusion around winch cover.

Place washers over the winch cover fixing holes located on the top middle face of the winch bumper.

Place the winch cover on top of the winch bumper inline with the mount holes.

Bolt together using the M6 button head stainless steel screws and M6 nuts.

## 4. FITTING BULL BAR TO VEHICLE



4.1 Using two people, three if winch fitted, position the bar assembly on the vehicle mounts.

Bolt the bar to the mounts using M12 bolts, large flat washers and spring washers. Align the bar to the profile of the guards, grille and light profile and tighten all bolts.

Using the M10 pilot holes in mount brackets, drill pinning hole through uprights on bull bar. Fit M10 screw, washer set and flange nut and do up tight.



4.2 Trim excess plastic inner guard molding to meet lower profile of bull bar wing. Note the position of water bottle on LHS of vehicle and trim neatly around it.

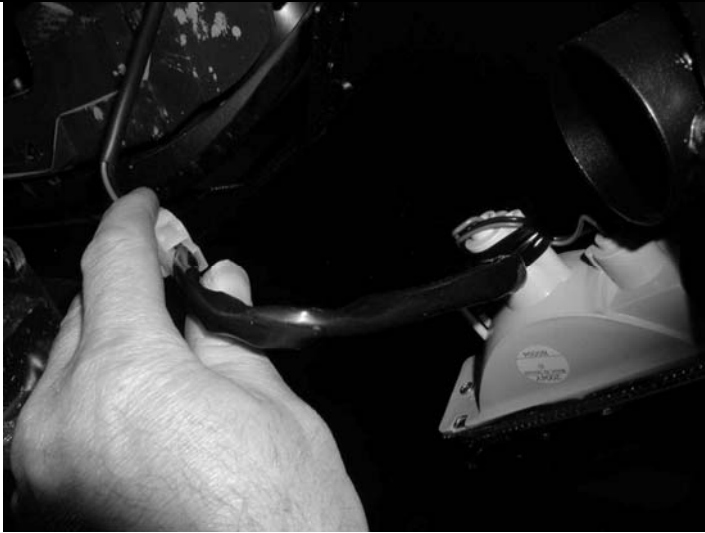


4.3 Fit inner guard plates to ends of bull bar wings and fasten with M6 black screws and washers.



4.4 ***If fitting with winch***

With the winch cable through the roller fair lead. Mount the hook to the end of the cable.



4.5 Wire up the indicator and clearance lamp assemblies. Use scotch locks to splice cables to existing indicator and clearance lamp wiring and cable tie securely.

If fog lights are to be installed, mount positions are on lower pan area between winch opening and high lift jack position.

**Refer to the Warn winch manual for vehicle wiring instructions.**

Ensure that electrical cables are installed well clear of sharp, hot or moving objects. Secure the winch cables to the vehicle and winch bumper with the supplied cable ties.

