



INSTALLATION INSTRUCTIONS

ASCENT FRONT BUMPER

Part Number: 105969 AND 107545

Application: 2020+ Chevy Silverado 25/3500 AND 2020+ GMC Sierra 25/3500

GENERAL SAFETY PRECAUTIONS

Your safety, and the safety of others, is very important. To help you make informed decisions about safety, we have provided installation and operating instructions and other information on labels and in this guide. This information alerts you to potential hazards that could hurt you or others. It is not possible to warn you about all potential hazards associated with this product, you must use your own good judgment.

CARELESS INSTALLATION AND OPERATION CAN RESULT IN SERIOUS INJURY OR EQUIPMENT DAMAGE. READ AND UNDERSTAND ALL SAFETY PRECAUTIONS AND OPERATING INSTRUCTIONS BEFORE INSTALLING AND OPERATING THIS PRODUCT.

This guide identifies potential hazards and has important safety messages that help you and others avoid personal injury or death. WARNING and CAUTION are signal words that identify the level of hazard. These signal words mean:

▲WARNING signals a hazard that could cause serious injury or death, if you do not follow recommendations. ▲CAUTION signals a hazard that may cause minor to moderate injury, if you do not follow recommendations.

This guide uses NOTICE to call attention to important mechanical information, and Note: to emphasize general information worthy of special attention.

▲ WARNING

IMPACT AND MOVING PARTS ENTANGLEMENT HAZARD

Failure to observe these instructions could lead to severe injury or death

- **Always** take time to fully read the Instructions and/or Operations Guide, and/or Basic Guide to Winching Techniques, in order to understand your winch and its operations.
- **Always** use extreme caution when drilling on any vehicle. Make sure that all fuel lines, brake lines, electrical wires, and other objects are not punctured or damaged when/if drilling on the vehicle. Thoroughly inspect the area to be drilled (on both sides of material) prior to drilling, and relocate any objects that may be damaged. Failure to inspect the area to be drilled may result in vehicle damage, electrical shock, fire or personal injury.
- **Always** wear safety glasses when installing this kit. A drilling operation will cause flying metal chips. Flying chips can cause eye injury.
- **Always** use extreme caution when cutting and trimming during fitting.
- **Always** remove jewelry and wear eye protection.
- **Never** lean over battery while making connections.
- **Never** route electrical cables:
 - o Across any sharp edges.
 - o Through or near moving parts.
 - o Near parts that become hot.
- **Always** insulate and protect all exposed wiring and electrical terminals.
- **Always** install terminal boots as directed in installation instructions.
- **Always** use appropriate and adequate care in lifting components into place.
- **Always** insure components will remain secure during installation and operation.
- **Always** tighten all nuts and bolts securely, per the installation instructions.
- **Always** perform regular inspections and maintenance on the plow mechanism, fasteners, cable and related hardware.
- **Always** replace all worn or damaged parts before operating.
- **Never** operate this WARN product with damaged or missing parts.

Read installation and operating instructions thoroughly.

WARN INDUSTRIES, INC. 12900 S.E. Capps Road,
Clackamas, OR USA 97015-8903, 1-503-722-1200, FAX: 1-503-722-3000
Customer Service: 1-800-543-9276
Dealer Locator Service: 1-800-910-1122
International Fax: 1-503-722-3005

⚠ CAUTION

MOVING PARTS ENTANGLEMENT HAZARD

Failure to observe these instructions could lead to minor or moderate injury

- **Always** take time to fully read and understand the installation and Operations Guide included with this product.
- **Never** operate this product if you are under 16 years of age.
- **Never** operate this product when under the influence of drugs, alcohol or medications.

Read installation and operating instructions thoroughly.

NOTICE

EQUIPMENT DAMAGE

- **Always** refer to the Installation and Specification Guide, supplied in the winch kit, for all wiring schematics and specific details on how to wire this WARN product to your vehicle.

Read installation and operating instructions thoroughly.

NOTICE



This product may interfere with driver assist systems such as adaptive cruise control and parking assist systems that have sensors or cameras installed in the bumpers or front grill area. If your vehicle is equipped with any of these systems or features, consult your vehicle owner's manual before installing this product. These systems may need to be disabled as a result of installing this product.

TABLE OF CONTENTS

Tools Required.....	page 2
Torque Specifications.....	page 2
Parts List.....	page 3
Installation.....	page 4-11
Maintenance/Care.....	page 11

TOOLS REQUIRED

- Standard wrenches
- Standard sockets

TORQUE SPECIFICATIONS

Please use the recommended torque specifications when assembling this product unless otherwise specified in the instructions.

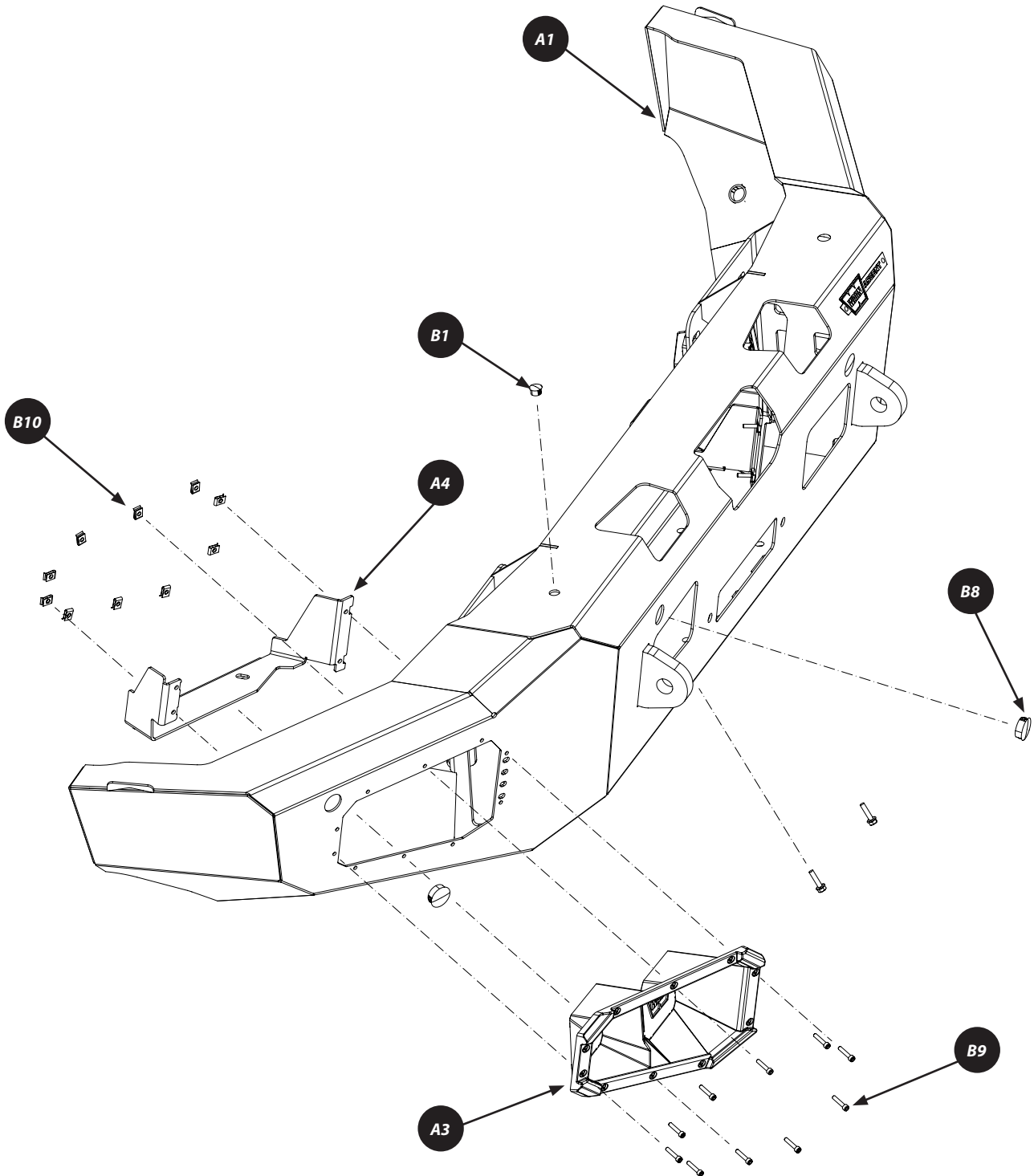
FASTENER SIZE	FASTENER TORQUE		FASTENER SIZE	FASTENER TORQUE	
	lb-ft	(N.m)		lb-ft	(N.m)
1/4"	8	(11)	M4	(2)	3
5/16"	17	(23)	M5	(4.5)	6
3/8"	30	(40)	M6	(7.5)	10
7/16"	48	(66)	M8	(18)	25
1/2"	74	(100)	M10	(37)	50
9/16"	106	(144)			
5/8"	148	(200)			
3/4"	269	(364)			

BEFORE YOU BEGIN

This instruction is for 2020+ Chevy Silverado and GMC Sierra 2500 and 3500 series pickups. Please note that images may not directly reflect your exact model and series.

PARTS LIST

ITEM	Chevy NO. / GMC NO.	DESCRIPTION	QTY	ITEM	PART NO.	DESCRIPTION	QTY
A1	106069 / 107546	BUMPER WELDMENT	1	B1	100661	9/16_LOCKING PLUG	2
A2	94888	RH LIGHT PORT	1	B2	64108	M6-1.0 x 25 HEX HEAD FLANGE BOLT	2
A3	94889	LH LIGHT PORT	1	B3	83125	M6 X 1.0 FLANGED HEX NUT	2
A4	100903	LH LIGHT BRACKET	1	B4	105967	CABLE TIE MOUNT ADHESIVE	6
A5	100904	RH LIGHT BRACKET	1	B5	68380	CABLE TIE	8
				B6	93278	MOLDING EDGE	1
				B7	102248	1-3/32 BLACK PLUG	4
				B8	90846	LOCKING PLUG	1
				B9	91541	10-24 SOCKET HEAD CAP SCREW	20
				B10	96329	10-24 PANEL NUT	20



INSTALLATION INSTRUCTIONS

1. Starting at the front, carefully pull the front fender flares out half way to expose fender hardware. **NOTE: Be careful not to break the clips or retaining tabs.**
2. Using a 7mm socket, remove the small screw underneath the fender flare.
3. Using a T-10 bit, remove the four screws holding the wheel well liner to the fender and bumper (*each side*).

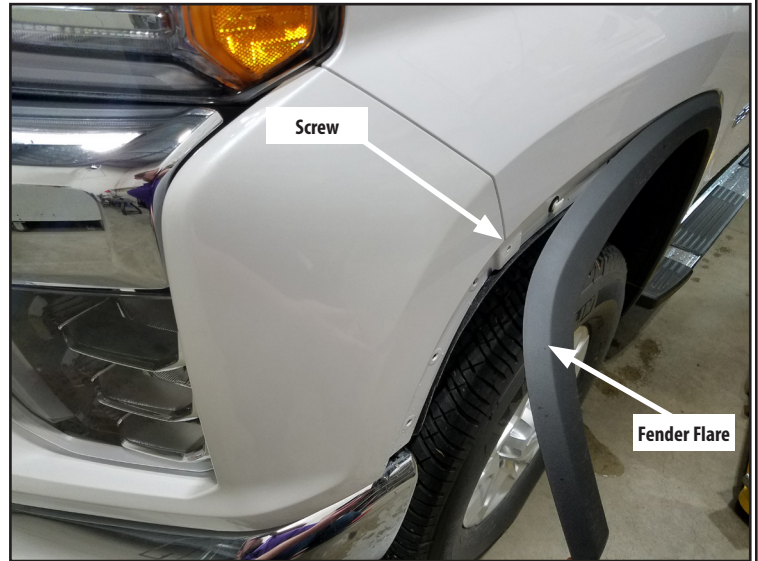


Figure 1

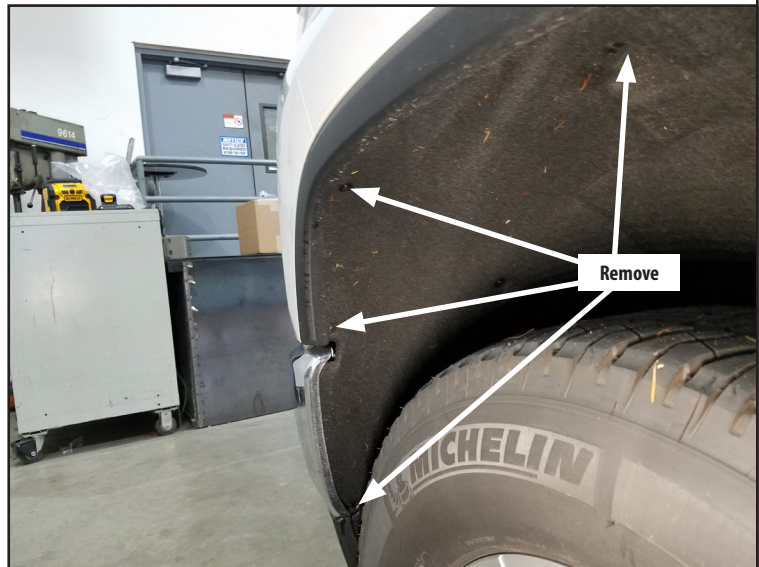


Figure 2

4. Carefully pull headlight trim panel forward (away from vehicle) and remove completely (*each side*). See figures 3 and 4.



Figure 3

INSTALLATION INSTRUCTIONS

5. With the hood up, remove the two screws on the hood release and the nine push clips around the edge of the radiator cover.

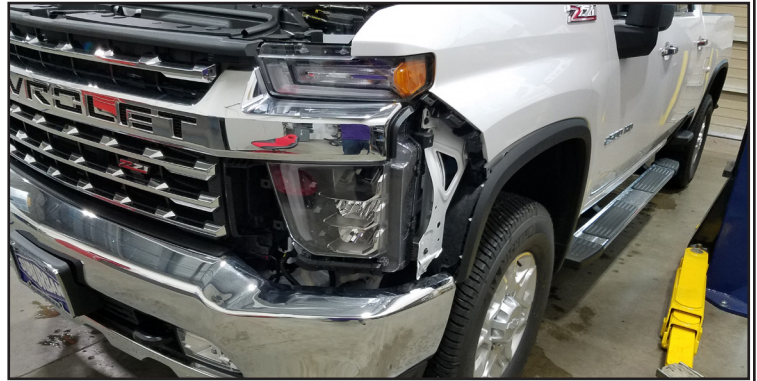


Figure 4

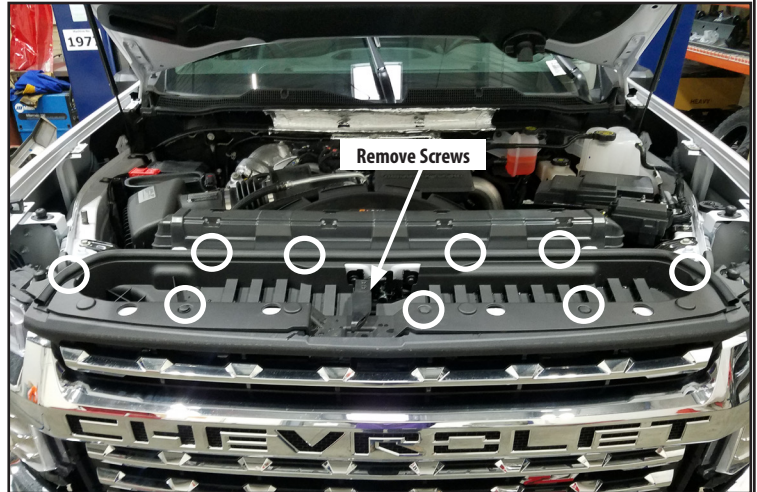


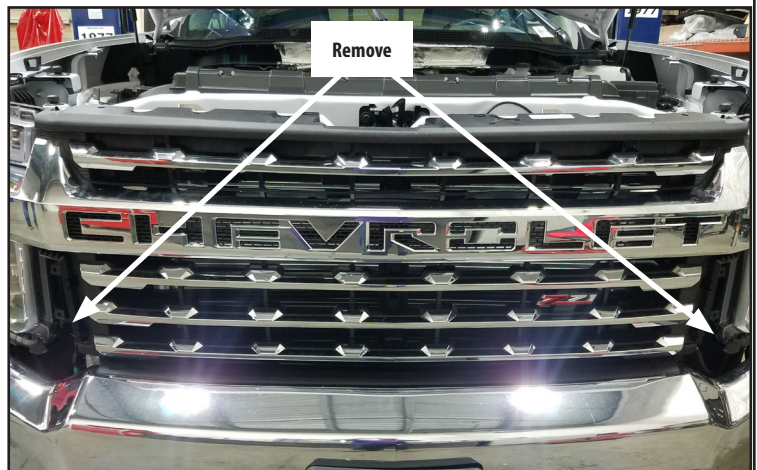
Figure 5

6. With the radiator cover removed, use a 10mm socket to remove the four bolts along the top of the grille.



Figure 6

7. *For Chevy pickups*, use a 10mm socket, remove the remaining two bolts retaining the grille at the bottom corners.
8. Remove the grille by carefully pulling it forward, away from the vehicle.



INSTALLATION INSTRUCTIONS

9. With the grille removed, unplug any wiring harnesses (front camera, fog lamp, etc.) connecting the bumper to vehicle. Repeat for other side. See Figure 7 and 8.



Figure 7

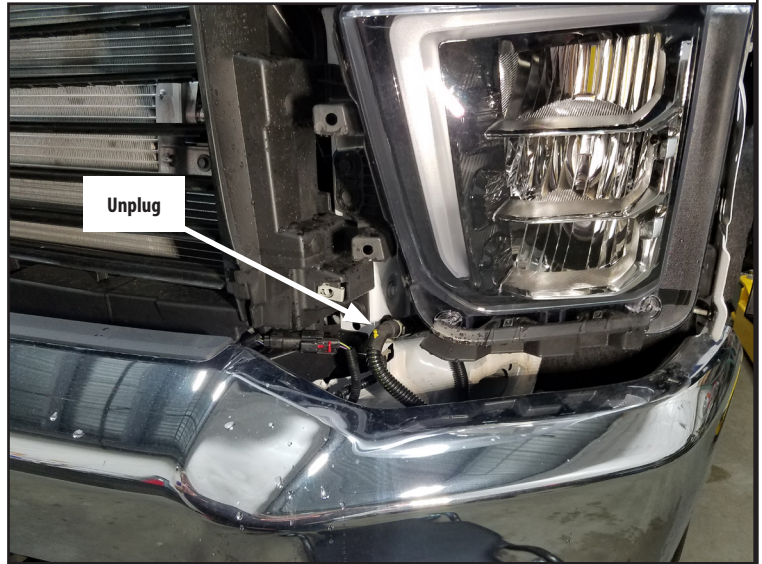


Figure 8

10. From underneath the truck, remove the two lower bumper support bracket bolts (each side) using a 15mm socket.

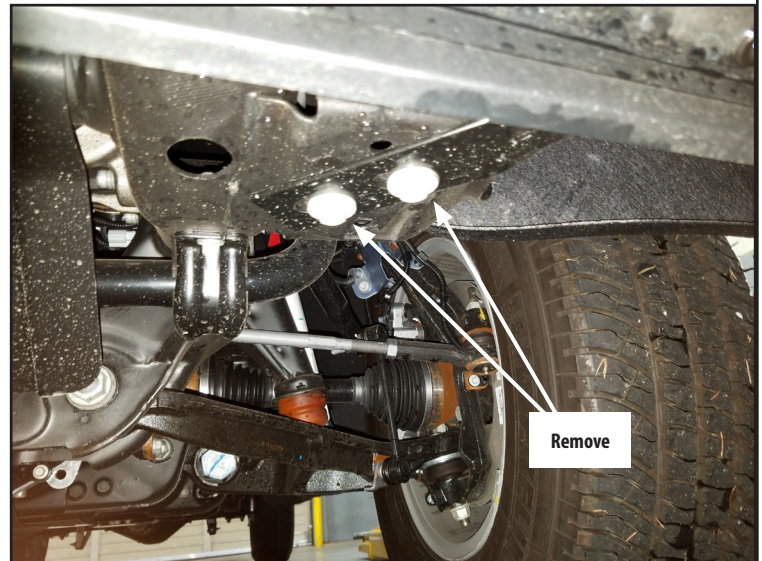


Figure 9

INSTALLATION INSTRUCTIONS

CAUTION

- Always use assistance when moving or lifting heavy parts.

11. With assistance to help support the bumper, use an 18mm socket and extension, to remove the two bumper bolts (each side).

12. Carefully remove bumper.

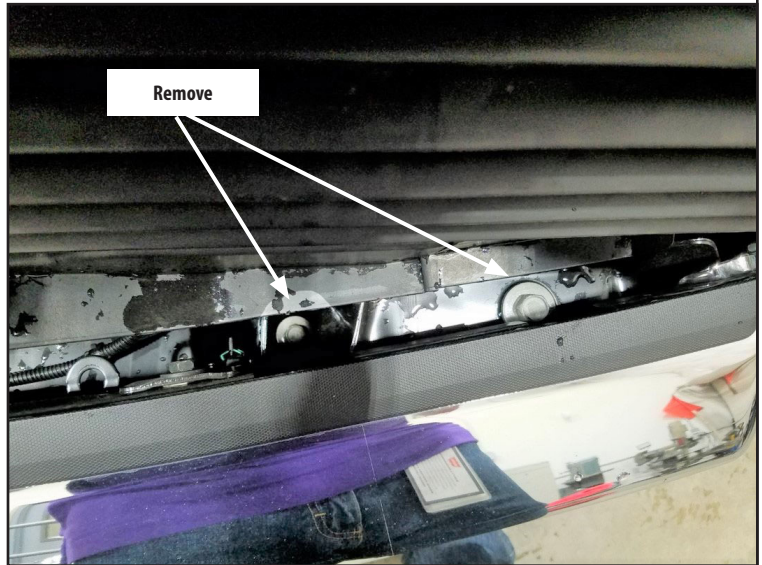


Figure 10

13. If equipped, use a 7mm socket to remove the four screws (two each side) from the grille shutter assembly, separating it from the bumper pads.

14. Unplug and remove grill shutter assembly from vehicle.

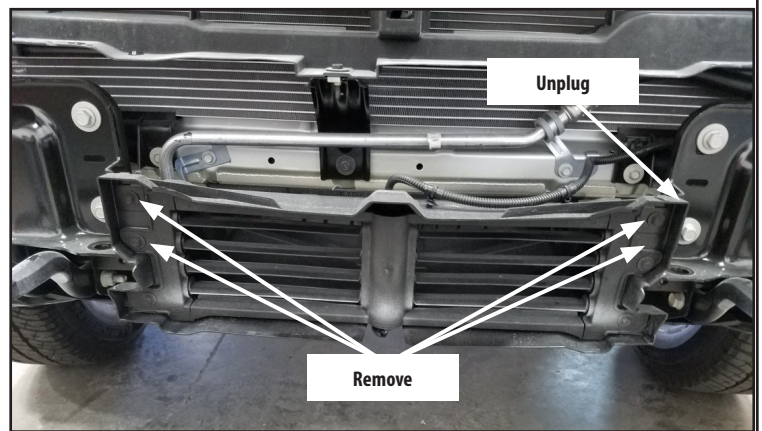


Figure 11

15. Remove remaining two screws to separate grille shutter from shroud.

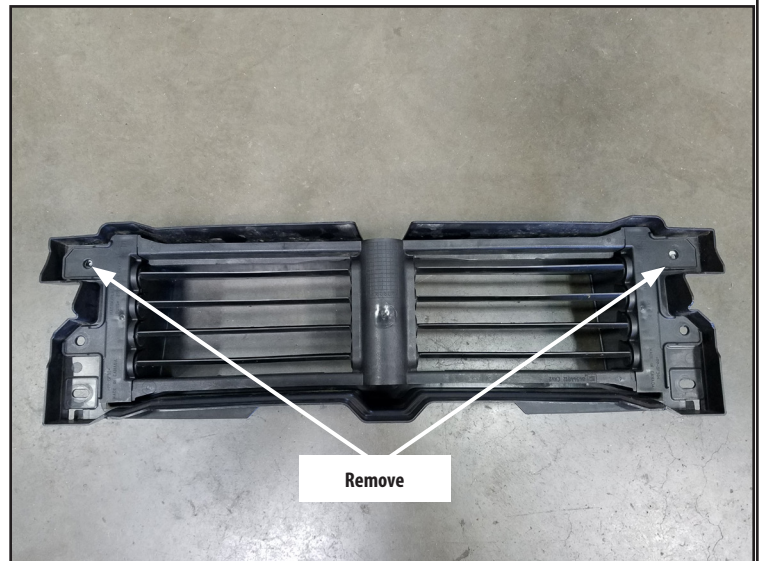


Figure 12

INSTALLATION INSTRUCTIONS

16. Using a 15mm socket, remove the eight bumper pad bolts and remove pads. **NOTE: Retain hardware, these bolts will be reused**



Figure 13

17. Using a 15mm wrench and socket, remove the two nuts and bolts retaining the tow hooks to the frame (each side). **NOTE: Retain hardware, these nuts and bolts will be reused**

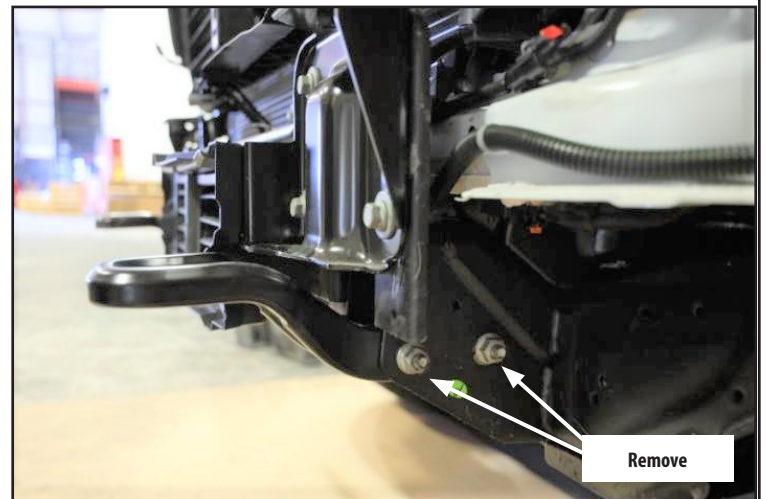


Figure 14

18. Remove sensors from sensor carriages (if equipped).

NOTICE Be sure to mark the location and orientation of each sensor plug.

TIP: Numbering each sensor with tape and marking the top with a paint pen works well.

19. Remove the carriages from stock bumper.
20. Release the plastic clips holding the wire harness in place and remove completely.
21. From the front of the bumper, carefully insert each sensor carriage into the correct mounting hole and snap into place. **NOTE: Be sure sensors match the orientation of the stock bumper.**
NOTE: If vehicle is not equipped with sensors, use provided sensor hole plugs (B7) to install in new Warn bumper.

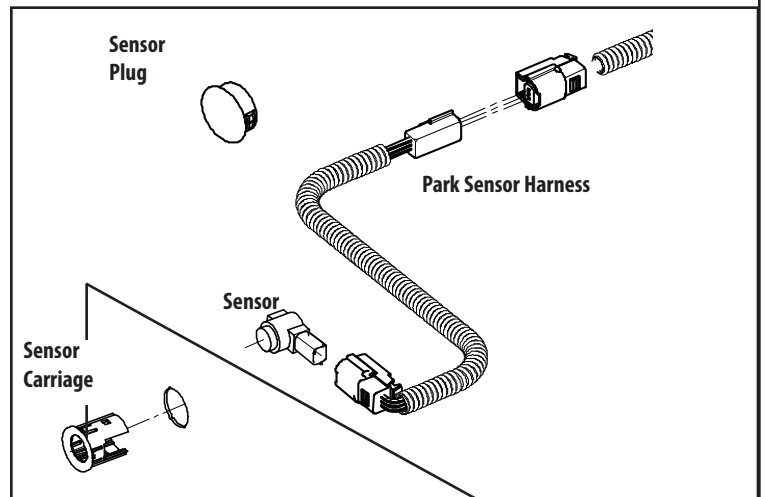


Figure 15

INSTALLATION INSTRUCTIONS

22. Mount fairlead and winch to new bumper according to your winch mounting instructions.
23. Route the factory wiring harness to new bumper. Use the included cable ties and adhesive anchors to route the wire harness away from any moving parts or the winch cable.
NOTE: Be sure that the wiring harness will not interfere with winch operation. It may be necessary to extend portions of the wiring harness.
24. Install sensors into the correct sensor carriage in the new bumper. **NOTE:** Be sure sensors match the orientation of the stock bumper.
25. If equipped, remove the block heater socket and wiring harness from the stock bumper and reinstall it into the new bumper. The socket is retained by a “push and twist” collar on the inside of the bumper. **NOTE:** Use included plug (B8) if vehicle is not equipped with block heater.

CAUTION Always use assistance when moving or lifting heavy parts.

26. With assistance, lift the bumper and winch assembly into place. **TIP:** A floor jack placed underneath each bumper corner can be helpful in leveling the bumper.
27. Route the power cables up and behind the driver side headlight and into the engine bay and up towards the battery. Use the included rubber edging along the top of the core support seam to protect the power cables.

WARNING Never route electrical cables across sharp edges, over battery terminals, through or near moving parts, near parts that get hot.

28. Carefully slide bumper towards vehicle, aligning brackets inside the vehicle frame rails. **NOTE:** One or two floor jacks placed under the bumper can be helpful in accurately aligning the bumper to the truck.
29. Loosely secure bumper using the original bumper mounting hardware in the original locations. **NOTE:** The hardware will be easiest to reach from the top gap of the bumper and through the light cutouts. The tow hook bolts will pass through the inner brackets in the same fashion as the stock tow hooks.
30. With the bumper loosely held in place, center it left and right.
31. With the bumper centered and level tighten all hardware to specifications on page 2.
32. Plug in **ALL** wiring harnesses to their respective locations. **NOTE:** Be sure that the two grill shutter connections are plugged in to the vehicle. If malfunction codes or lights appear, you will need to have cleared or disabled by dealership.



Figure 16



Figure 17



Figure 18

INSTALLATION INSTRUCTIONS

33. With the bumper mounted, place the grille shutter in between the cooling duct and the winch tray.
34. Secure shutter with the included zip ties. **NOTE: Ensure that the shutters will have free range of motion when activated.**
35. Plug shutter harness back into the vehicle harness. **NOTE: The truck may need to have the batteries disconnected and reconnected if it was started while the shutters were unplugged.**

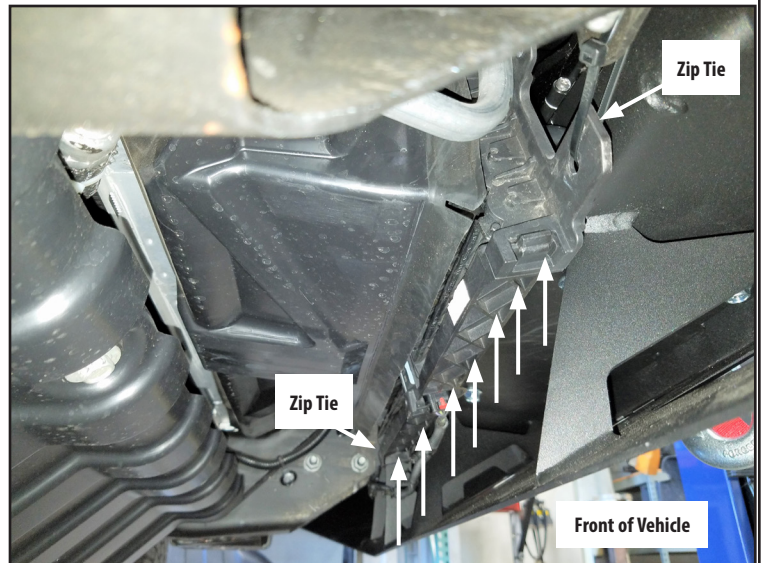


Figure 19

36. Trim fender liners.
 - a. Mark along the fender liner with masking tape.
 - b. Carefully cut liner with a reciprocating saw or other cutting tool. **NOTICE** Avoid cutting into any wiring harnesses on the back side of the fender liner.

⚠ WARNING Always use extreme caution when cutting and trimming during fitting.



Figure 20

37. While holding light bracket (A4 & A5) in place (from under and behind bumper), line up light bezel (A2 & A3) through front bumper light port to bracket. Secure pieces together with ten stainless screws (B9). Review exploded view on page 3.

38. Repeat for other side.

NOTE: Light bezels are equipped with removable panels for lights. Lights shown installed sold separately.

39. Reinstall the remaining body pieces, (grille, trim, etc.) in the reverse order of removal.
40. If not installing sensors and ascent bumper accessories, plug unused holes with provided hole plugs (B7 and B4). Refer to exploded view on page 3.

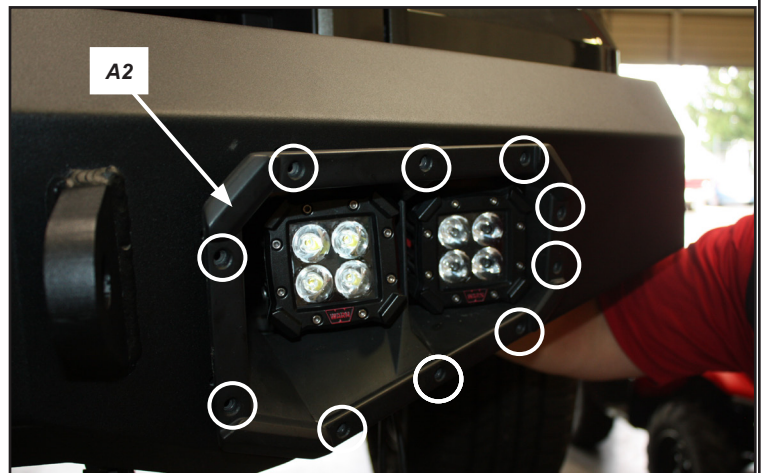


Figure 21

INSTALLATION INSTRUCTIONS

41. The remaining hardware (B2 and B3) are to used to install license plate to new bumper.

42. Connect cables to the battery terminals.

⚠ WARNING Always connect red (+) power cable **ONLY** to the positive (+) terminal of the battery.

⚠ WARNING Always connect black ground (-) power cable **ONLY** to the negative (-) terminal of the battery.

43. Your installation is now complete.



Figure 22



Figure 23

MAINTENANCE / CARE

1. Inspect all parts on the winch, winch mount, and related hardware prior to each use. Replace all hardware that appears rusted or deformed.
2. Inspect all nuts and bolts on the winch, winch mount, and related hardware prior to each use. Tighten all nuts that appear to be loose. Stripped, fractured, or bent bolts or nuts need to be replaced.
3. Check all cables prior to use. Replace cables that look worn or frayed.
4. Check all moving or rotating parts. Remove debris that may inhibit the part from moving freely.

CARELESS INSTALLATION AND OPERATION CAN RESULT IN SERIOUS INJURY OR EQUIPMENT DAMAGE. READ AND UNDERSTAND ALL SAFETY PRECAUTIONS AND OPERATING INSTRUCTIONS BEFORE INSTALLING AND OPERATING THIS PRODUCT.

