



INSTALLATION INSTRUCTIONS

Ascent-S Front Bumper

Part Number: 105785

Application: Chevy Silverado

GENERAL SAFETY PRECAUTIONS

Your safety, and the safety of others, is very important. To help you make informed decisions about safety, we have provided installation and operating instructions and other information on labels and in this guide. This information alerts you to potential hazards that could hurt you or others. It is not possible to warn you about all potential hazards associated with this product, you must use your own good judgment.

CARELESS INSTALLATION AND OPERATION CAN RESULT IN SERIOUS INJURY OR EQUIPMENT DAMAGE. READ AND UNDERSTAND ALL SAFETY PRECAUTIONS AND OPERATING INSTRUCTIONS BEFORE INSTALLING AND OPERATING THIS PRODUCT.

This guide identifies potential hazards and has important safety messages that help you and others avoid personal injury or death. WARNING and CAUTION are signal words that identify the level of hazard. These signal words mean:

▲WARNING signals a hazard that could cause serious injury or death, if you do not follow recommendations. ▲CAUTION signals a hazard that may cause minor to moderate injury, if you do not follow recommendations.

This guide uses NOTICE to call attention to important mechanical information, and Note: to emphasize general information worthy of special attention.

▲ WARNING

IMPACT AND MOVING PARTS ENTANGLEMENT HAZARD

Failure to observe these instructions could lead to severe injury or death

- **Always** Know Your Winch. Take time to fully read the Instructions and/or Operations Guide, and/or Basic Guide to Winching Techniques, in order to understand your winch and its operations.
- **Never** work under vehicle before properly securing vehicle.
- **Always** use appropriate and adequate care in lifting components into place.
- **Never** work under vehicle before properly securing vehicle.
- **Always** use appropriate and adequate care in lifting components into place.
- **Never** use a jack to support the vehicle.
- **Always** use jack stands in pairs to support the vehicle.
- **Always** use jacks or jack stands only on a hard, stable, and level surface.
- **Never** exceed the rated capacity of a jack or jack stands.
- **Always** verify that the parking brake is set, the transmission is in park (automatic) or reverse (manual) and the rear wheels are blocked before working on vehicle.
- **Never** work under vehicle before properly securing vehicle.
- **Always** use appropriate and adequate care in lifting components into place.
- **Always** insure components will remain secure during installation and operation.
- **Always** tighten all nuts and bolts securely, per the installation and operation.
- **Always** perform regular inspections and maintenance on the winch, winch mount and related hardware.
- **Always** replace all worn or damaged parts before operating.
- **Never** operate this WARN product with damaged or missing parts.
- **Always** use extreme caution when drilling on any vehicle. Make sure that all fuel lines, brake lines, electrical wires, and other objects are not punctured or damaged when / if drilling on the vehicle. Thoroughly inspect the area to be drilled (on both sides of material) prior to drilling, and relocate any objects that may be damaged. Failure to inspect the area to be drilled may result in vehicle damage, electrical shock, fire or personal injury.
- **Always** use extreme caution when cutting and trimming during fitting.
- **Always** wear safety glasses when installing this kit. A drilling operation will cause flying metal chips. Flying chips can cause eye injury.
- **Always** remove jewelry and wear eye protection.
- **Never** lean over battery while making connections.
- **Never** route electrical cables across any sharp edge, through or near moving parts, near parts that become hot.

Read installation and operating instructions thoroughly.

WARN INDUSTRIES, INC. 12900 S.E. Capps Road,
Clackamas, OR USA 97015-8903, 1-503-722-1200, FAX: 1-503-722-3000
Customer Service: 1-800-543-9276
Dealer Locator Service: 1-800-910-1122
International Fax: 1-503-722-3005

⚠ CAUTION

MOVING PARTS ENTANGLEMENT HAZARD

Failure to observe these instructions could lead to minor or moderate injury

- Part edges may be sharp!
- Always use proper posture / lifting technique or get lifting assistance while handling and installing product.

Read installation and operating instructions thoroughly.

NOTICE

EQUIPMENT DAMAGE

- **Never** tow vehicle by attaching a tow bar to the eyelets on the bumper.
- Do not attach tow bars directly to the bumper. Damage to bumper may occur. WARN bumpers are not designed to be used for flat towing. Consult with the manufacturer of your tow bar system for the proper vehicle tow bar brackets..

Read installation and operating instructions thoroughly.

BEFORE YOU BEGIN

NOTICE



This product may interfere with driver assist systems such as adaptive cruise control and parking assist systems that have sensors or cameras installed in the bumpers or front grill area. If your vehicle is equipped with any of these systems or features, consult your vehicle owner's manual before installing this product. These systems may need to be disabled as a result of installing this product.

TABLE OF CONTENTS

Tools Required.....	page 2
Torque Specifications.....	page 2
Parts List.....	page 3
Installation.....	page 4-10
Maintenance/Care.....	page 10

TOOLS REQUIRED

- Standard wrenches
- Standard sockets

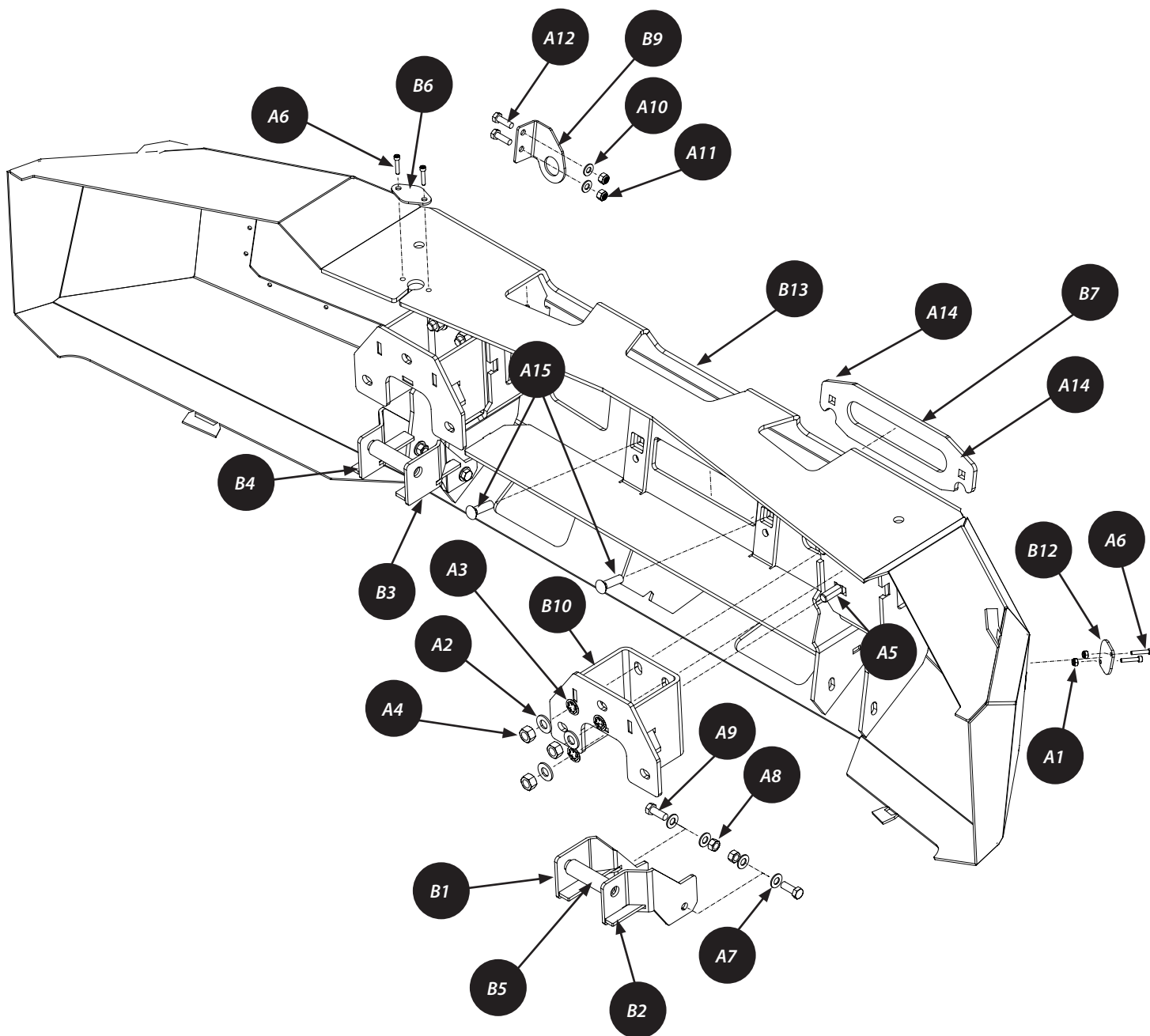
TORQUE SPECIFICATIONS

Please use the recommended torque specifications when assembling this product unless otherwise specified in the instructions.

FASTENER SIZE	FASTENER TORQUE		FASTENER SIZE	FASTENER TORQUE	
	lb-ft	(N.m)		lb-ft	(N.m)
1/4"	8	(11)	M4	(2)	3
5/16"	17	(23)	M5	(4.5)	6
3/8"	30	(40)	M6	(7.5)	10
7/16"	48	(66)	M8	(18)	25
1/2"	74	(100)	M10	(37)	50
9/16"	106	(144)			
5/8"	148	(200)			
3/4"	269	(364)			

PARTS LIST

ITEM	PART NO.	DESCRIPTION	QTY	ITEM	PART NO.	DESCRIPTION	QTY
A1	63241	#10-24-LOCKING NUT	6	B1	105767	RH - B ANTINOD BRACKET	1
A2	9213	1/2 WASHER	6	B2	105766	RH - A ANTINOD BRACKET	1
A3	101259	1/2" PUSHNUT BOLT RETAINER	6	B3	105765	LH - B ANTINOD BRACKET	1
A4	29060	1/2-13-LOCKING NUT	6	B4	105764	LH - A ANTINOD BRACKET	1
A5	102491	1/2-13X1.25 CARRIAGE HEAD BOLT	6	B5	99788	CRUSH TUBE	2
A6	91541	10-24X1 STAINLESS CAPSCREWS (not all shown)	26	B6	105721	TRIM PLATE	1
A7	11524	3/8 WASHER	8	B7	103621	SPACER PLATE	1
A8	6779	3/8-16 LOCKING NUT	4	B8	104068	RH SENSOR BRACKET	1
A9	1827	3/8-16 x 1 BOLT	4	B9	104069	LH SENSOR BRACKET	1
A10	1324	5/16 WASHER	4	B10	104206	MOUNTING BRACKET	2
A11	2002	5/16-18 LOCKING NUT	4	B11	105871	SENSOR PLATE	2
A12	21331	5/16-18 X 1 BOLT	4	B12	103715	SOLID TRIM PLATE	2
A13	2146	7/16 WASHER	2	B13	104200	BUMPER	1
A14	73849	7/16-14 ACORN NUT	2	B14	100903	LH LIGHT BRACKET (not shown)	1
A15	11124	7/16-14x1.5 CARRIAGE HEAD BOLT	2	B15	100904	RH LIGHT BRACKET (not shown)	1
A16	96329	10-24 PANEL NUT	20	B16	94889	LH LIGHT PORT (not shown)	1
				B17	94888	RH LIGHT PORT (not shown)	1



INSTALLATION INSTRUCTIONS

1. Remove the hood latch by removing the two top screws.



Figure 1

2. Using a pry tool, carefully remove the 12 clips that are holding the radiator cover in place.

NOTICE Use care when removing clips as to not damage the clip or cover. You will be reinstalling later.



3. Remove radiator cover completely and carefully set aside.
NOTE: Your cover may look different than in image.

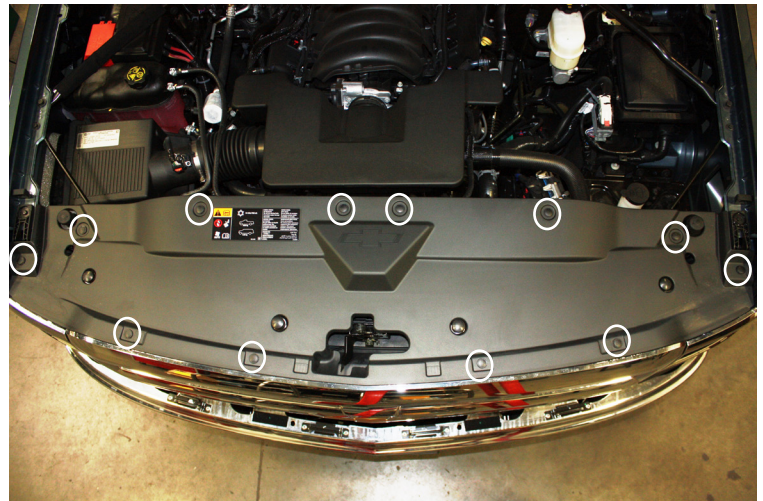


Figure 2

4. Remove the (4) bolts located on top of grill.

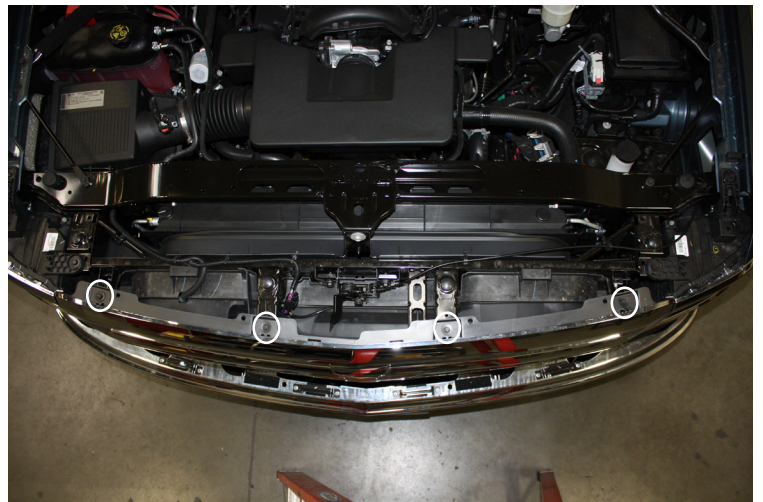


Figure 3

INSTALLATION INSTRUCTIONS

5. Remove the grill by unclipping it from the support clips surrounding the grill. *Be careful, as it will still be attached with the wire harness.*

Carefully work your way around, starting with the top and moving towards the corners and then finally making your way to the bottom. You may need to use a tool to gently pry away completely.

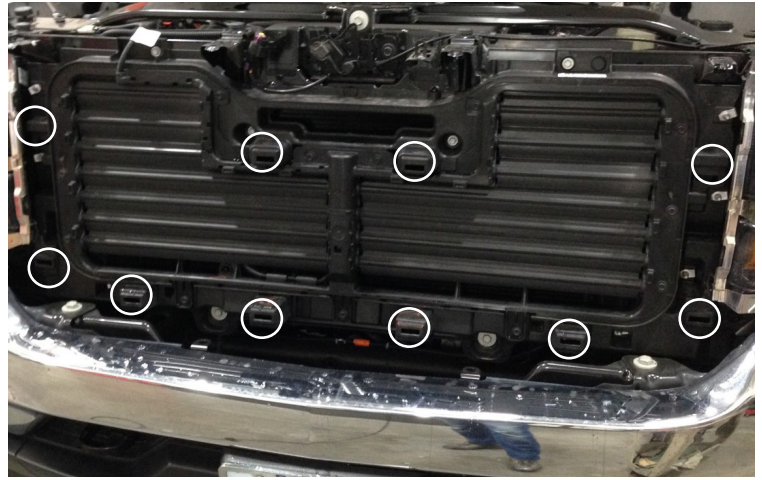


Figure 4

6. If equipped, unplug the wire harness connector located on the passenger side frame rail.

You can now remove grille completely.



Figure 5

7. Carefully remove three screws (each side) from fender liner to release from bumper, be sure to take special care as to not tear the liner.

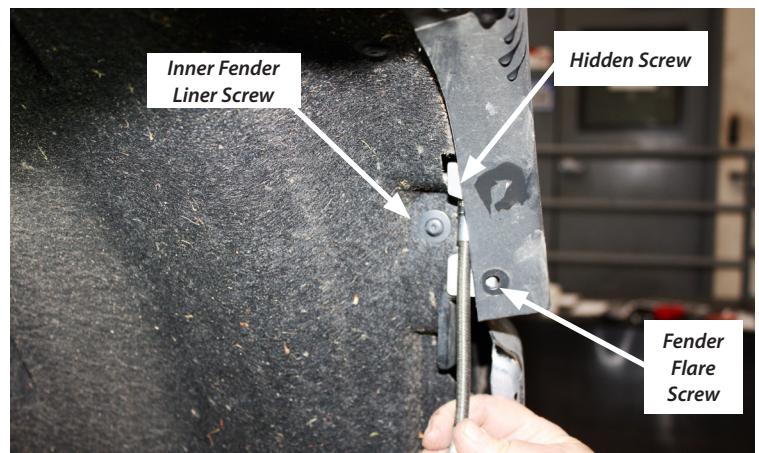


Figure 6

INSTALLATION INSTRUCTIONS

- From underneath vehicle, remove the two bolts on lower valance (each side).

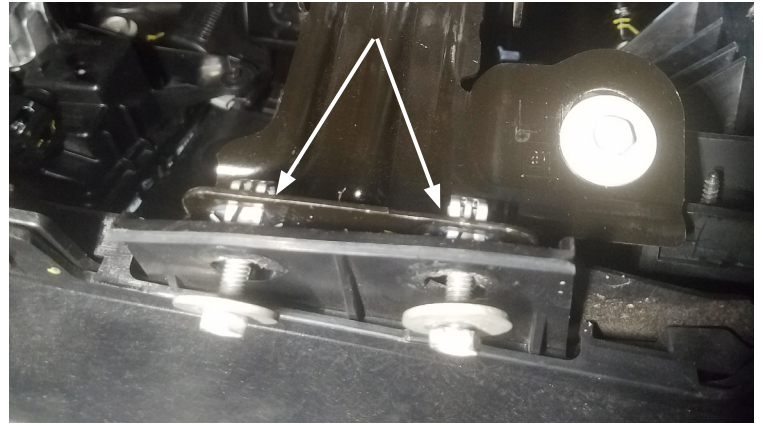


Figure 7

- Remove the three bolts holding bumper support brace (each side).
- If equipped, disconnect fog lamp wiring harness.

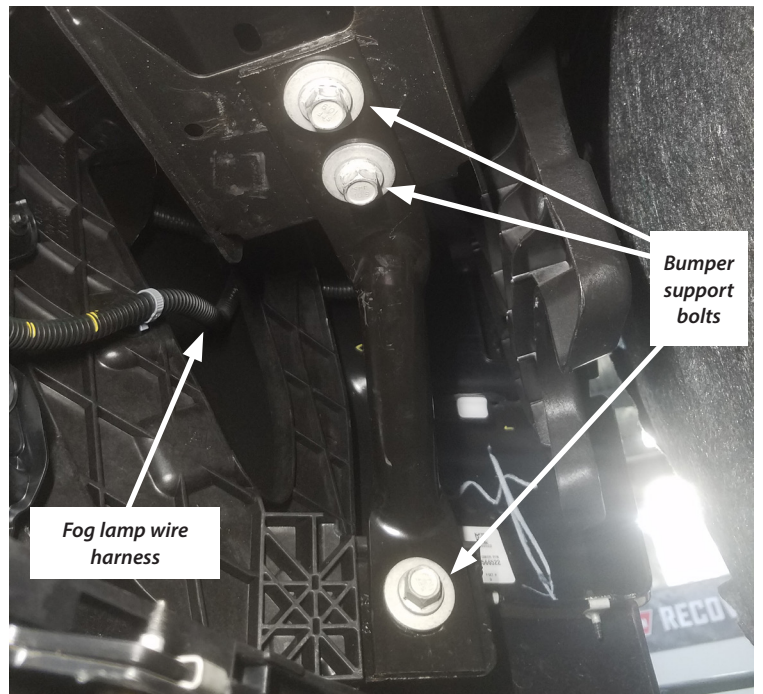


Figure 8

- Push back the rubber cover to expose the bumper mounting bolts.
- Remove the two bolts securing bumper to vehicle (both sides).



Figure 9

INSTALLATION INSTRUCTIONS

⚠ WARNING Always use assistance when moving or lifting heavy parts.

13. With assistance, remove bumper.
14. Remove the two bolts that secure the tow hooks. **NOTE: Retain the long bolt and nut for later use.**
15. Remove tow hooks (both sides). **NOTE: You will not be reinstalling.**

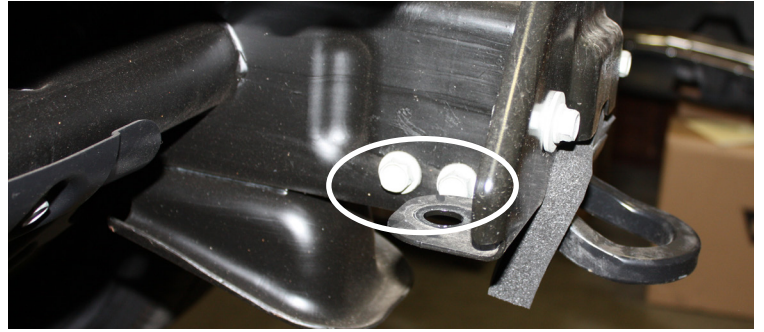


Figure 10

16. If equipped, remove the air dam (two screws per side). **NOTE: You will not reuse hardware.**
17. Remove frame pads (three bolts each side). **Retain hardware.**

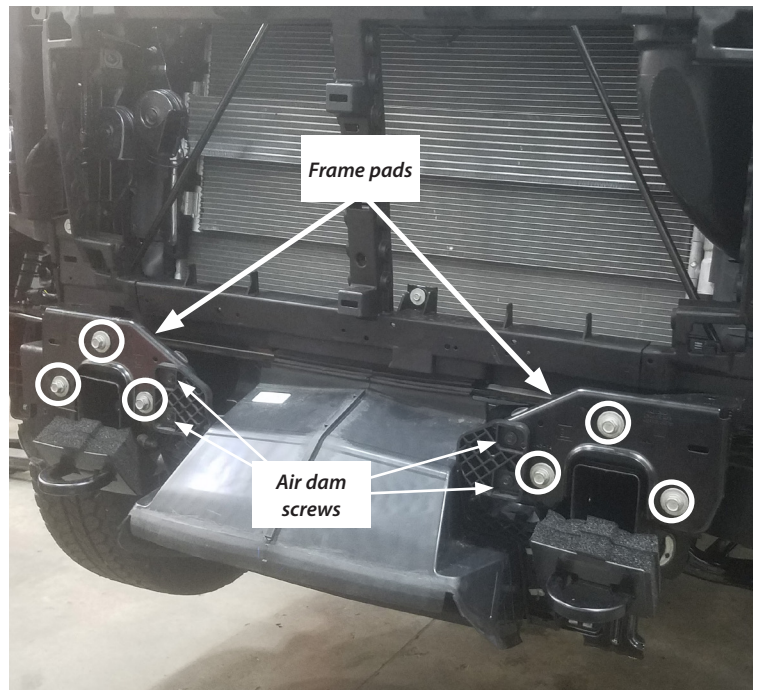


Figure 11

18. Remove front bumper pads from the frame (retain hardware).
19. Install mounting brackets (B10) using stock hardware.



Figure 12

INSTALLATION INSTRUCTIONS

20. Prepare the new bumper by inserting three carriage bolts (A5) into the bumper and secure with a retaining pushnut (A3). *TIP: Use a socket to secure pushnut on each bolt.*
21. Repeat for other side.

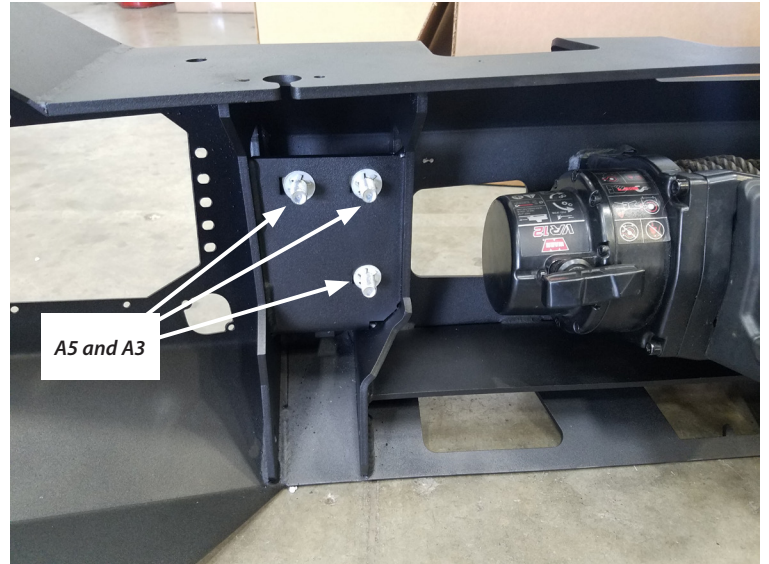


Figure 13

22. Install two black carriage bolts (A15) into the center of the bumper. **NOTE: Make sure the square neck of the bolt is seated properly into the front face of the bumper.**

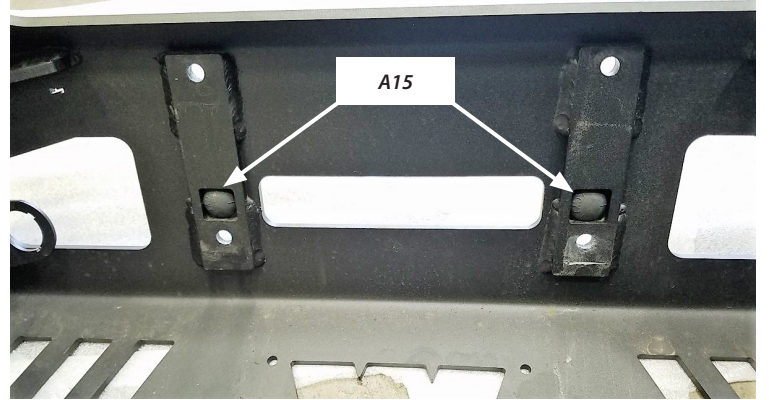


Figure 14

23. If your vehicle is equipped with parking sensors, install the two parking sensor brackets (B8 and B9) into the center section of the bumper using the 5/16" hardware (A12, A10 and A11).

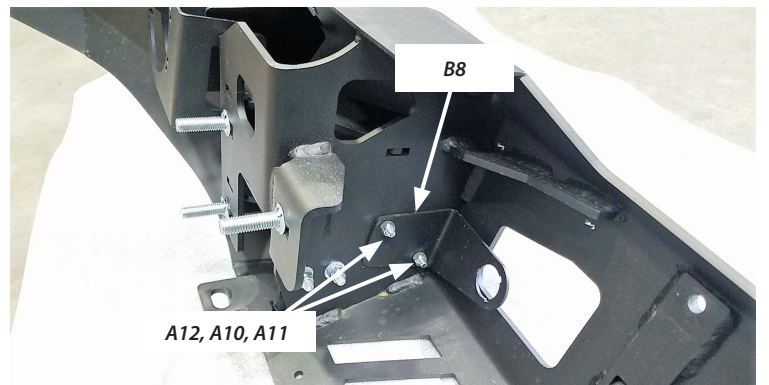


Figure 15

24. Install rope on the winch and install the winch to the bumper per your winch installation instructions. **NOTE: Use the two longer shoulder bolts in the upper winch mount holes and the two traditional non-shoulder winch mounting bolts in the lower winch mount holes.**

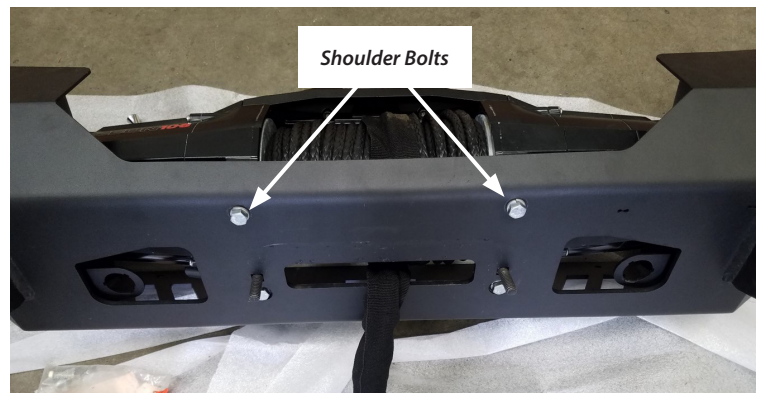


Figure 16

INSTALLATION INSTRUCTIONS

25. Install the fairlead spacer plate (B7) on the front face of the bumper (threading holes in plate over the two previously installed black carriage bolts).

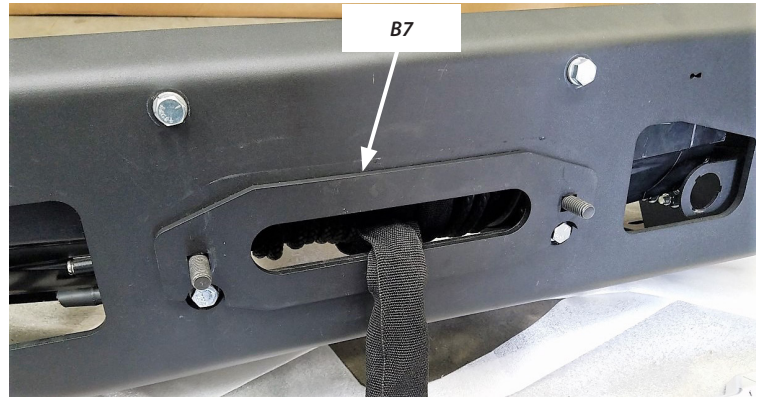


Figure 17

26. Install your fairlead onto the top of the fairlead spacer plate and secure with acorn nuts (A14).



Figure 18

27. If your vehicle is equipped with parking sensors:
- Install the outer sensor plates (B11) using two screws (A11) and nuts (A5). **NOTE: if your vehicle is not equipped with parking sensors, install solid sensor plates (B12).**
 - Install sensor carriages into sensor plates. **NOTE: Be sure to install in the same orientation as it was removed from stock bumper.**



Figure 19

WARNING Always use assistance when moving or lifting heavy parts.

28. With assistance, install bumper, making sure to align the carriage bolts from bumper with the slots in the mounting brackets on the vehicle.
NOTE: Prior to fully tightening, be sure your bumper has a gap space of roughly one inch between itself and the body of the vehicle.
29. Once the gap is spaced evenly along the bumper, fully tighten using the six washers (A2) and nuts (A4). Refer to the torque specifications on page 2.



Figure 20

INSTALLATION INSTRUCTIONS

- Place the anti-nod bracket A (B2 or B4) to the outer side of the frame rail and anti-nod bracket (B2 or B3) to the inner side of the frame rail and secure using the rear side with the crush tube (B5) and stock tow hook bolt.
- Secure the front of the anti-nod brackets using one bolt (A9), washer (A7) and nut (A8). Refer to exploded view on page 3. Tighten all fasteners.

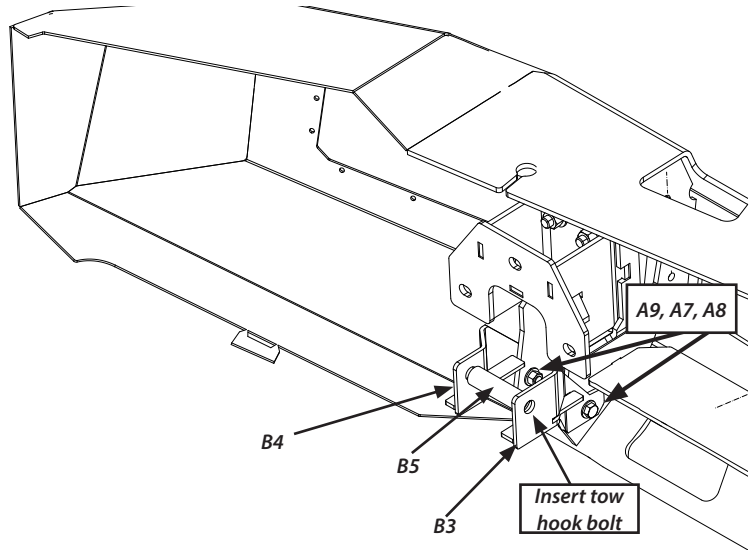


Figure 21

- From behind bumper, hold light bracket (B14 or B15) in place (behind each light port cut out).
- From the front of the bumper, line up light port (B16 or B17) to bracket. Secure pieces together with ten stainless steel socket head screws (A6) and secure with panel nuts (A16).
- Repeat for other side.

NOTE: Light bezels are equipped with removable panels for lights. Lights shown installed - sold separately.

- Tighten all hardware per torque specifications.

Installation is now complete.

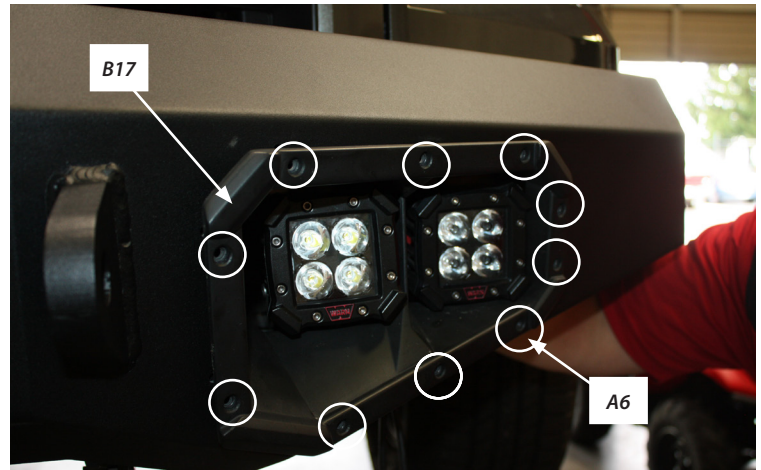


Figure 22

MAINTENANCE / CARE

- Inspect all parts on the winch, winch mount, and related hardware prior to each use. Replace all hardware that appears rusted or deformed.
- Inspect all nuts and bolts on the winch, winch mount,, and related hardware prior to each use. Tighten all nuts that appear to be loose. Stripped, fractured, or bent bolts or nuts need to be replaced.
- Check all cables prior to use. Replace cables that look worn or frayed.
- Check all moving or rotating parts. Remove debris that may inhibit the part from moving freely.

CARELESS INSTALLATION AND OPERATION CAN RESULT IN SERIOUS INJURY OR EQUIPMENT DAMAGE. READ AND UNDERSTAND ALL SAFETY PRECAUTIONS AND OPERATING INSTRUCTIONS BEFORE INSTALLING AND OPERATING THIS PRODUCT.

