



INSTALLATION INSTRUCTIONS ASCENT FRONT BUMPER KIT

Part Number: 104256

Application: 2019 Dodge Ram 2500/3500

GENERAL SAFETY PRECAUTIONS

Your safety, and the safety of others, is very important. To help you make informed decisions about safety, we have provided installation and operating instructions and other information on labels and in this guide. This information alerts you to potential hazards that could hurt you or others. It is not possible to warn you about all potential hazards associated with this product, you must use your own good judgment.

CARELESS INSTALLATION AND OPERATION CAN RESULT IN SERIOUS INJURY OR EQUIPMENT DAMAGE. READ AND UNDERSTAND ALL SAFETY PRECAUTIONS AND OPERATING INSTRUCTIONS BEFORE INSTALLING AND OPERATING THIS PRODUCT.

This guide identifies potential hazards and has important safety messages that help you and others avoid personal injury or death. WARNING and CAUTION are signal words that identify the level of hazard. These signal words mean:

▲WARNING signals a hazard that could cause serious injury or death, if you do not follow recommendations. **▲CAUTION** signals a hazard that may cause minor to moderate injury, if you do not follow recommendations.

This guide uses **NOTICE** to call attention to important mechanical information, and Note: to emphasize general information worthy of special attention.

▲ WARNING

IMPACT AND MOVING PARTS ENTANGLEMENT HAZARD

Failure to observe these instructions could lead to severe injury or death

- **Always** Know Your Winch. Take time to fully read the Instructions and/or Operations Guide, and/or Basic Guide to Winching Techniques, in order to understand your winch and its operations.
- **Never** work under vehicle before properly securing vehicle.
- **Always** use appropriate and adequate care in lifting components into place.
- **Never** work under vehicle before properly securing vehicle.
- **Always** use appropriate and adequate care in lifting components into place.
- **Never** use a jack to support the vehicle.
- **Always** use jack stands in pairs to support the vehicle.
- **Always** use jacks or jack stands only on a hard, stable, and level surface.
- **Never** exceed the rated capacity of a jack or jack stands.
- **Always** verify that the parking brake is set, the transmission is in park (automatic) or reverse (manual) and the rear wheels are blocked before working on vehicle.
- **Never** work under vehicle before properly securing vehicle.
- **Always** use appropriate and adequate care in lifting components into place.
- **Always** insure components will remain secure during installation and operation.
- **Always** tighten all nuts and bolts securely, per the installation and operation.
- **Always** perform regular inspections and maintenance on the winch, winch mount and related hardware.
- **Always** replace all worn or damaged parts before operating.
- **Never** operate this WARN product with damaged or missing parts.
- **Always** use extreme caution when drilling on any vehicle. Make sure that all fuel lines, brake lines, electrical wires, and other objects are not punctured or damaged when / if drilling on the vehicle. Thoroughly inspect the area to be drilled (on both sides of material) prior to drilling, and relocate any objects that may be damaged. Failure to inspect the area to be drilled may result in vehicle damage, electrical shock, fire or personal injury.
- **Always** use extreme caution when cutting and trimming during fitting.
- **Always** wear safety glasses when installing this kit. A drilling operation will cause flying metal chips. Flying chips can cause eye injury.
- **Always** remove jewelry and wear eye protection.
- **Never** lean over battery while making connections.
- **Never** route electrical cables across any sharp edge, through or near moving parts, near parts that become hot.

Read installation and operating instructions thoroughly.

WARN INDUSTRIES, INC. 12900 S.E. Capps Road,
Clackamas, OR USA 97015-8903, 1-503-722-1200, FAX: 1-503-722-3000
Customer Service: 1-800-543-9276
Dealer Locator Service: 1-800-910-1122
International Sales/Customer Service: 1-503-722-3008
International Fax: 1-503-722-3005

⚠ CAUTION

MOVING PARTS ENTANGLEMENT HAZARD

Failure to observe these instructions could lead to minor or moderate injury

- Part edges may be sharp!
- Always use proper posture / lifting technique or get lifting assistance while handling and installing product.

Read installation and operating instructions thoroughly.

NOTICE

EQUIPMENT DAMAGE

- **Never** tow vehicle by attaching a tow bar to the eyelets on the bumper.
- Do not attach tow bars directly to the bumper. Damage to bumper may occur. WARN bumpers are not designed to be used for flat towing. Consult with the manufacturer of your tow bar system for the proper vehicle tow bar brackets..

Read installation and operating instructions thoroughly.

NOTES

BEFORE YOU BEGIN



This product may interfere with driver assist systems such as adaptive cruise control and parking assist systems that have sensors or cameras installed in the bumpers or front grill area. If your vehicle is equipped with any of these systems or features, consult your vehicle owner's manual before installing this product. These systems may need to be disabled as a result of installing this product.

TABLE OF CONTENTS

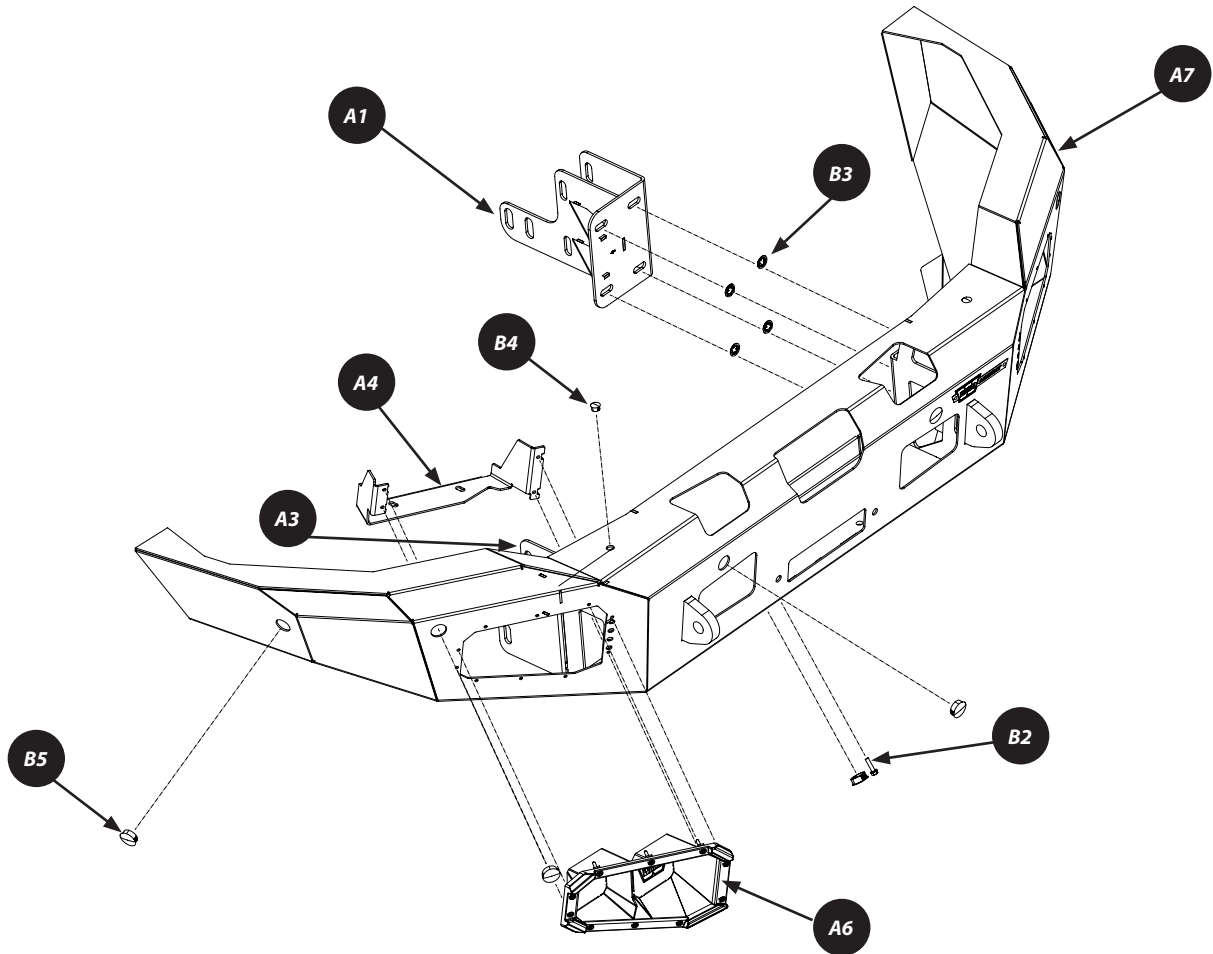
Tools Required.....	page 2
Parts List.....	page 3
Torque Specifications.....	page 3
Installation.....	page 4
Maintenance/Care.....	page x

TOOLS REQUIRED

- Standard Wrench and Socket Set
- Metric Wrench and Socket Set
- Reciprocating saw or other cutting tool
- Masking tape

PARTS LIST

Item	PN	Description	Qty.	Item	PN	Description	Qty.
A1	105811	LH FRAME BRACKET	1	B1	83125	M6 FLANGED NUT (<i>not shown</i>)	2
A2	104261	RH FRAME BRACKET	1	B2	64108	M6 FLANGE BOLT	2
A3	100903	LH LIGHT BRACKET	1	B3	101259	1/2" PUSHNUT BOLT RETAINER	8
A4	100904	RH LIGHT BRACKET	1	B4	100661	9/16 LOCKING PLUG	2
A5	94889	LH LIGHT PORT	1	B5	102248	1-3/32 PLUG	8
A6	94888	RH LIGHT PORT	1	B6	91541	STAINLESS SCREWS	20
A7	104257	BUMPER	1	B7	105967	ZIP TIE ADHESIVE ANCHORS (<i>not shown</i>)	6
				B8	68380	ZIP TIE (<i>not shown</i>)	8



TORQUE SPECIFICATIONS

Please use the recommended torque specifications when assembling this product unless otherwise specified in the instructions.

FASTENER SIZE	FASTENER TORQUE		FASTENER SIZE	FASTENER TORQUE	
	lb-ft	(N.m)		lb-ft	(N.m)
1/4"	8	(11)	M4	(2)	3
5/16"	17	(23)	M5	(4.5)	6
3/8"	30	(40)	M6	(7.5)	10
7/16"	48	(66)	M8	(18)	25
1/2"	74	(100)	M10	(37)	50
9/16"	106	(144)			
5/8"	148	(200)			
3/4"	269	(364)			

INSTALLATION INSTRUCTIONS

Disconnect the vehicle battery cables, negative terminal first. All work with electrical wires and cables must be completed with the battery completely disconnected from the vehicle wiring.

1. Using a 10mm socket, remove screw in fender well securing the fender liner to the bumper. Repeat for other side.
2. If vehicle is equipped with front sensors or fog lights, unplug the bumper wiring harness from the main vehicle harness. **NOTE: Be sure to note the location and orientation of the sensors prior to removal, this is important for the reinstall.**
3. From underneath the vehicle, at the front corner of the frame rails, remove the nuts and bolts securing the bumper and tow hooks. Retain hardware for re-installation.
 - a. The light colored tow hook bolts require a 24mm socket, the nut on the inboard side of the frame is captive.
 - b. The dark colored bumper mount bolts require an 18mm socket and wrench as the nut is free to rotate.
 - c. Repeat for other side.

CAUTION Always use assistance when moving or lifting heavy parts.

4. Carefully remove bumper and set on a clean and stable surface.
5. Using a 24mm socket and wrench, remove the two bolts and nuts and the blocker bar (each side) from the vehicle.

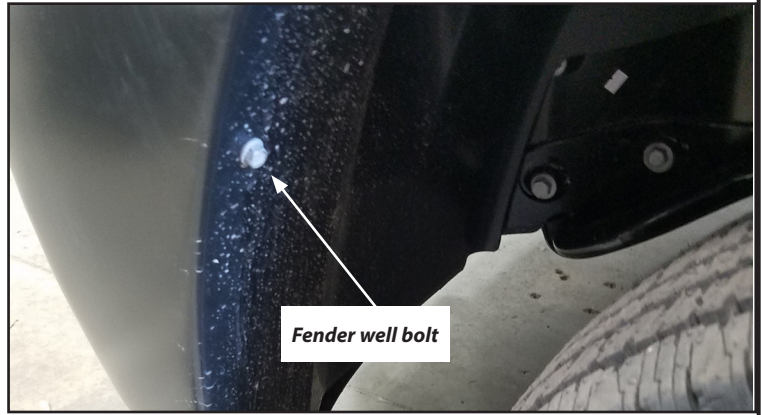


Figure 1

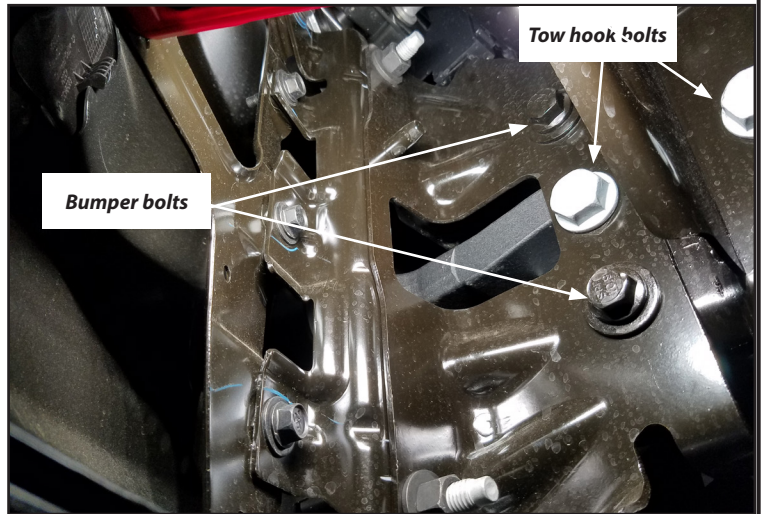


Figure 2



Figure 3

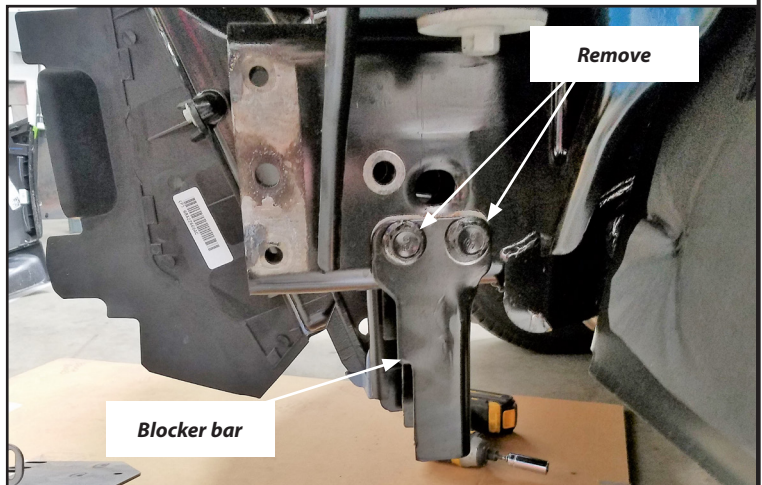


Figure 4

INSTALLATION INSTRUCTIONS

6. From the inside of the bumper, remove the eight nuts and carriage bolts securing the stock frame brackets. Retain hardware for re-installation.



Figure 5

7. Remove the sensors from their carriages.
 - a. Spread the top and bottom tabs of the sensor carriage outward.
 - b. From the outside of the bumper, push sensor towards the inside of the bumper. **NOTICE** Be sure to mark the location and orientation of each sensor plug.

TIP: Numbering each sensor with tape and marking the top with a paint pen works well.

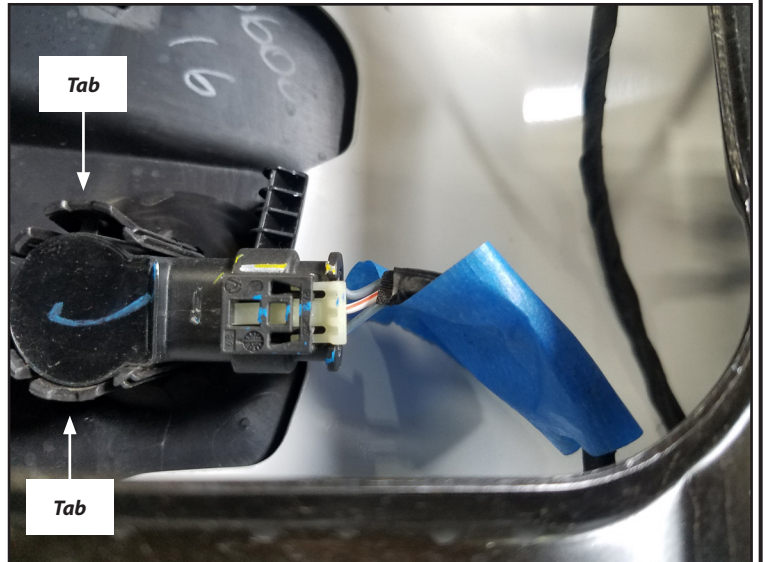


Figure 6

8. Remove the carriages from stock bumper.
 - a. Squeeze in the two tabs on the side of the carriages.
 - b. Push each carriage out the front of the bumper.

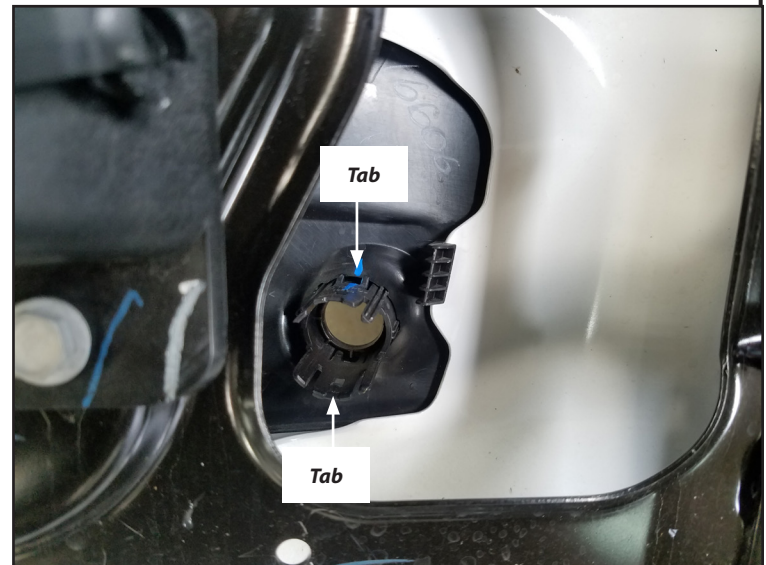


Figure 7

9. Release the plastic clips holding the wire harness in place and remove completely.



Figure 8

INSTALLATION INSTRUCTIONS

10. Install the eight stock carriage bolts into the new bumper and secure loosely using the included push nuts (B3). *TIP: It is helpful to secure push nut to bumper and bolt with a socket.*

NOTE: Do not tighten push nut down to allow for adjustment.



Figure 9

11. From the front of the bumper, carefully each sensor carriage into the correct mounting hole and snap into place. **NOTE: Be sure sensors match the orientation of the stock bumper.**



Figure 10

12. Route the factory wiring harness and sensors into the new bumper.
 - a. Thread harness through the upper holes of the internal structure.

NOTE: Be sure sensors match the orientation of the stock bumper.

- b. Install sensors into coordinating sensor carriage.
- c. Secure wire harness up and away from potential moving parts (i.e. winch rope) using supplied zip ties (B8) and zip tie adhesive anchors (B7) at the locations marked in Figure 10.

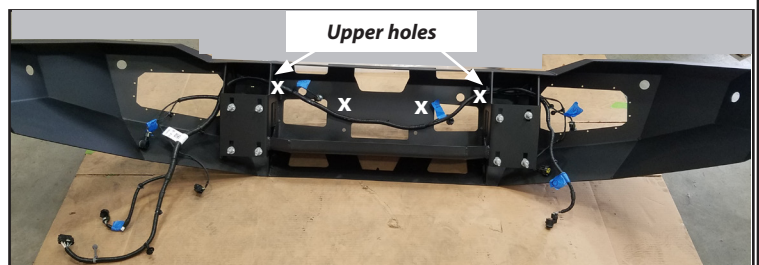


Figure 11

13. Install the fairlead to bumper per your winch installation instructions.



Figure 12

INSTALLATION INSTRUCTIONS

14. Mount winch to bumper per winch installation instructions.



Figure 13

15. Using the stock tow hook and bumper bolts, install the left (A1) and right (A2) frame brackets to vehicle frame. Do not tighten to allow for adjustments.

TIP: The small arrows on the face of the brackets will point in towards each other.

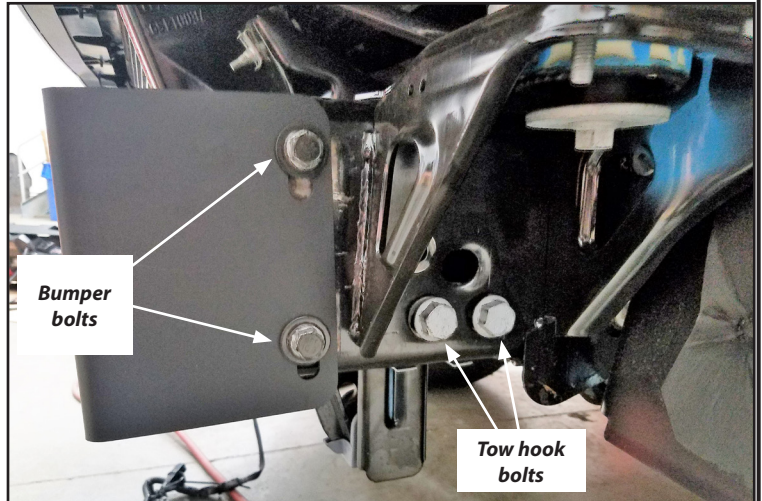
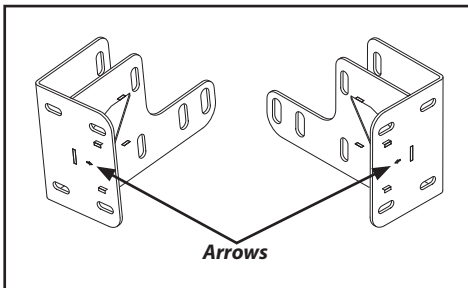


Figure 14

16. Route winch power cables up along frame rail and toward battery.

NOTE: Make sure to route wires/cables away from sharp edges, heat and moving parts.

NOTE: Zip tie in regular intervals to keep cables/wiring in place.



Figure 15

17. With assistance, lift the new bumper in position and slide the carriage bolts into the mounting holes on each frame bracket.

18. Loosely secure the bumper with the eight factory nuts removed in step 1. **TIP:** The upper nuts may be easier to access through the cutouts in the bumper.

19. With the bumper loosely held in place, center it left and right.

20. With the bumper centered, level it and set the height (we recommend a gap of approximately $\frac{1}{2}$ inch between the bumper and fenders). **TIP:** A floor jack placed underneath each bumper corner can be helpful in leveling the bumper.

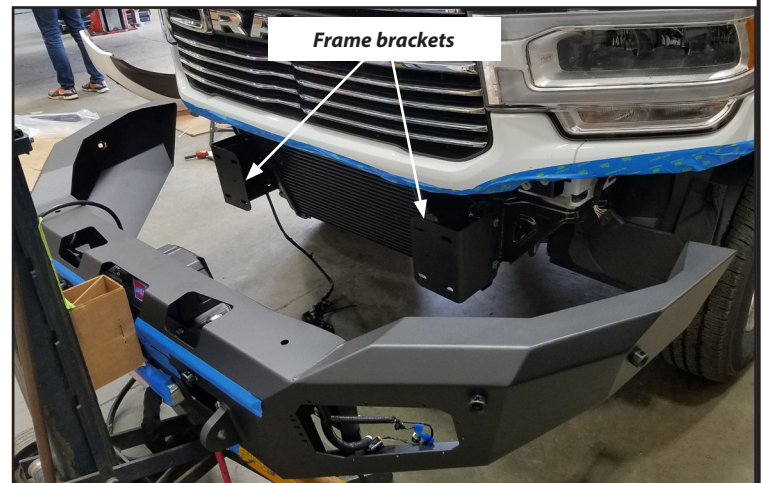


Figure 16

CAUTION Always use assistance when moving or lifting heavy parts.

INSTALLATION INSTRUCTIONS

21. Once bumper is centered and level, tighten hardware to recommended torque on page 3.
22. Trim fender liners.
 - a. Mark along the fender liner with masking tape.
 - b. Carefully cut liner with a reciprocating saw or other cutting tool. **NOTICE** Avoid cutting into the washer fluid reservoir or any wiring harnesses on the back side of the fender liner.

WARNING Always use extreme caution when cutting and trimming during fitting.

23. While holding light bracket (A4) in place (from under and behind bumper), line up light port (A6) through front bumper light port to bracket. Secure pieces together with ten stainless steel socket head screws (B6).

NOTE: Light ports are equipped with removable panels for lights. Lights shown installed sold separately.

24. Repeat for other side.
25. If not installing sensors and ascent bumper accessories, plug unused holes with provided hole plugs (B5 and B4). Refer to exploded view on page 3.
26. The remaining hardware (B1 and B2) are to be used to install license plate to new bumper.
27. Tighten **ALL** hardware now, refer to torque specifications on page 3.
28. Reconnect battery connections.



Figure 17

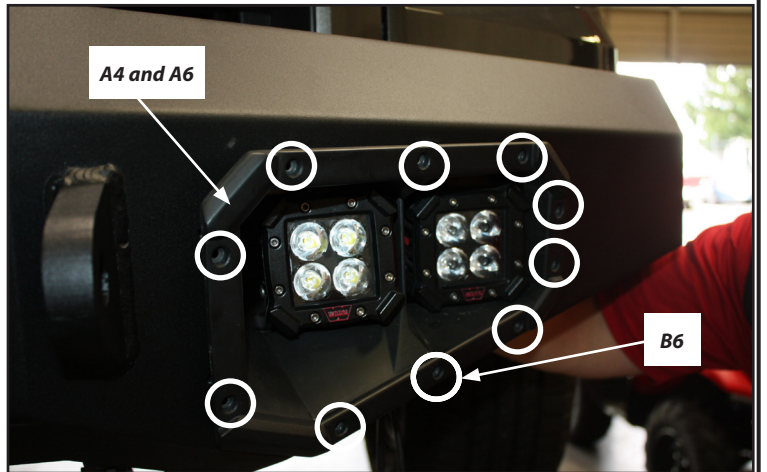


Figure 18

MAINTENANCE / CARE

1. Inspect all parts on the winch, winch mount, and related hardware prior to each use. Replace all hardware that appears rusted or deformed.
2. Inspect all nuts and bolts on the winch, winch mount, and related hardware prior to each use. Tighten all nuts that appear to be loose. Stripped, fractured, or bent bolts or nuts need to be replaced.
3. Check all cables prior to use. Replace cables that look worn or frayed.
4. Check all moving or rotating parts. Remove debris that may inhibit the part from moving freely.

CARELESS INSTALLATION AND OPERATION CAN RESULT IN SERIOUS INJURY OR EQUIPMENT DAMAGE. READ AND UNDERSTAND ALL SAFETY PRECAUTIONS AND OPERATING INSTRUCTIONS BEFORE INSTALLING AND OPERATING THIS PRODUCT.

