



INSTALLATION INSTRUCTIONS

MID-FRAME BUMPER

Part Number: 95870

Application: 2015 Chevy 2500/3500

GENERAL SAFETY PRECAUTIONS

Your safety, and the safety of others, is very important. To help you make informed decisions about safety, we have provided installation and operating instructions and other information on labels and in this guide. This information alerts you to potential hazards that could hurt you or others. It is not possible to warn you about all potential hazards associated with this product, you must use your own good judgment.

CARELESS INSTALLATION AND OPERATION CAN RESULT IN SERIOUS INJURY OR EQUIPMENT DAMAGE. READ AND UNDERSTAND ALL SAFETY PRECAUTIONS AND OPERATING INSTRUCTIONS BEFORE INSTALLING AND OPERATING THIS PRODUCT.

This guide identifies potential hazards and has important safety messages that help you and others avoid personal injury or death. **WARNING** and **CAUTION** are signal words that identify the level of hazard. These signal words mean:

▲WARNING signals a hazard that could cause serious injury or death, if you do not follow recommendations. **▲CAUTION** signals a hazard that may cause minor to moderate injury, if you do not follow recommendations.

This guide uses **NOTICE** to call attention to important mechanical information, and **Note:** to emphasize general information worthy of special attention.

▲ WARNING

IMPACT AND MOVING PARTS ENTANGLEMENT HAZARD

Failure to observe these instructions could lead to severe injury or death

- **Always** take time to fully read the Instructions and/or Operations Guide, and/or Basic Guide to Winching Techniques, in order to understand your winch and its operations.
- **Always** use extreme caution when drilling on any vehicle. Make sure that all fuel lines, brake lines, electrical wires, and other objects are not punctured or damaged when/if drilling on the vehicle. Thoroughly inspect the area to be drilled (on both sides of material) prior to drilling, and relocate any objects that may be damaged. Failure to inspect the area to be drilled may result in vehicle damage, electrical shock, fire or personal injury.
- **Always** wear safety glasses when installing this kit. A drilling operation will cause flying metal chips. Flying chips can cause eye injury.
- **Always** use extreme caution when cutting and trimming during fitting.
- **Always** remove jewelry and wear eye protection.
- **Never** lean over battery while making connections.
- **Never** route electrical cables:
 - o Across any sharp edges.
 - o Through or near moving parts.
 - o Near parts that become hot.
- **Always** insulate and protect all exposed wiring and electrical terminals.
- **Always** install terminal boots as directed in installation instructions.
- **Always** use appropriate and adequate care in lifting components into place.
- **Always** insure components will remain secure during installation and operation.
- **Always** tighten all nuts and bolts securely, per the installation instructions.
- **Always** perform regular inspections and maintenance on the plow mechanism, fasteners, cable and related hardware.
- **Always** replace all worn or damaged parts before operating.
- **Never** operate this WARN product with damaged or missing parts.

Read installation and operating instructions thoroughly.

WARN INDUSTRIES, INC. 12900 S.E. Capps Road,
Clackamas, OR USA 97015-8903, 1-503-722-1200, FAX: 1-503-722-3000
Customer Service: 1-800-543-9276
Dealer Locator Service: 1-800-910-1122
International Fax: 1-503-722-3005

⚠ CAUTION

MOVING PARTS ENTANGLEMENT HAZARD

Failure to observe these instructions could lead to minor or moderate injury

- **Always** take time to fully read and understand the installation and Operations Guide included with this product.
- **Never** operate this product if you are under 16 years of age.
- **Never** operate this product when under the influence of drugs, alcohol or medications.

Read installation and operating instructions thoroughly.

NOTICE

EQUIPMENT DAMAGE

- **Always** refer to the Installation and Specification Guide, supplied in the winch kit, for all wiring schematics and specific details on how to wire this WARN product to your vehicle.

Read installation and operating instructions thoroughly.

BEFORE YOU BEGIN

NOTICE



This product may interfere with driver assist systems such as adaptive cruise control and parking assist systems that have sensors or cameras installed in the bumpers or front grill area. If your vehicle is equipped with any of these systems or features, consult your vehicle owner's manual before installing this product. These systems may need to be disabled as a result of installing this product.

TABLE OF CONTENTS

Tools Required.....	page 2
Torque Specifications.....	page 2
Parts List.....	page 3
Installation.....	page 4-9
Maintenance/Care.....	page 10

TOOLS REQUIRED

- Standard wrenches
- Standard sockets

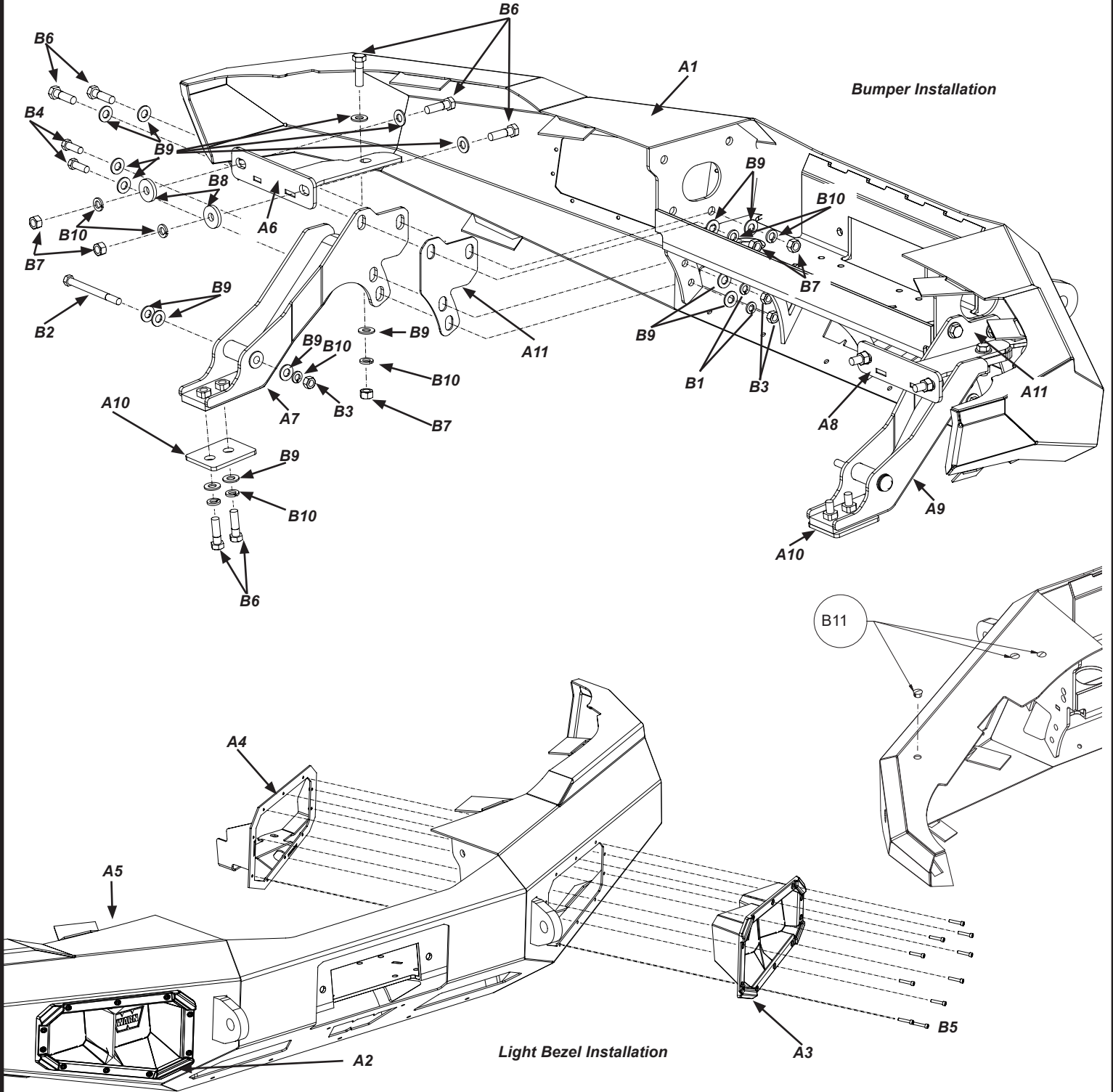
TORQUE SPECIFICATIONS

Please use the recommended torque specifications when assembling this product unless otherwise specified in the instructions.

FASTENER SIZE	FASTENER TORQUE		FASTENER SIZE	FASTENER TORQUE	
	lb-ft	(N.m)		lb-ft	(N.m)
1/4"	8	(11)	M4	(2)	3
5/16"	17	(23)	M5	(4.5)	6
3/8"	30	(40)	M6	(7.5)	10
7/16"	48	(66)	M8	(18)	25
1/2"	74	(100)	M10	(37)	50
9/16"	106	(144)			
5/8"	148	(200)			
3/4"	269	(364)			

PARTS LIST

ITEM	PART NO.	DESCRIPTION	QTY	ITEM	PART NO.	DESCRIPTION	QTY
A1	95995	BUMPER WELDMENT	1	B1	2146	7/16 FLAT WASHER	6
A2	94888	RH LIGHT PORT	1	B2	31808	7/16 X 5 IN HEX HEAD CAP SCREW	2
A3	94889	LH LIGHT PORT	1	B3	2583	7/16 IN NUT	6
A4	95438	LH LIGHT BRACKET	1	B4	1824	7/16 X 1 1/4 HEX HEAD CAP SCREW	4
A5	95458	RH LIGHT BRACKET	1	B5	91541	10-24 SOCKET HEAD CAP SCREW	20
A6	96111	LH UPPER FRAME BRACKET	1	B6	22535	1/2 X 1 3/4 IN HEX HEAD CAP SCREW	14
A7	96112	LH LOWER FRAME EXTENSION BRACKET	1	B7	1323	1/2 IN NUT	10
A8	96114	RH UPPER FRAME BRACKET	1	B8	3693	SPACER	4
A9	96113	RH LOWER FRAME EXTENSION BRACKET	1	B9	9213	1/2 IN FLAT WASHER	34
A10	96208	BOLT PLATES	2	B10	2596	1/2 IN LOCK WASHER	14
A11	96209	SHIM PLATES	4	B11	100661	9/16 LOCKING PLUG	6
				B12	90846	SENSOR HOLE PLUG	4



INSTALLATION INSTRUCTIONS



Figure 1

1. Carefully remove the plastic shroud covering the radiator by removing the 12 plastic push/pull pins. You will be reinstalling later.

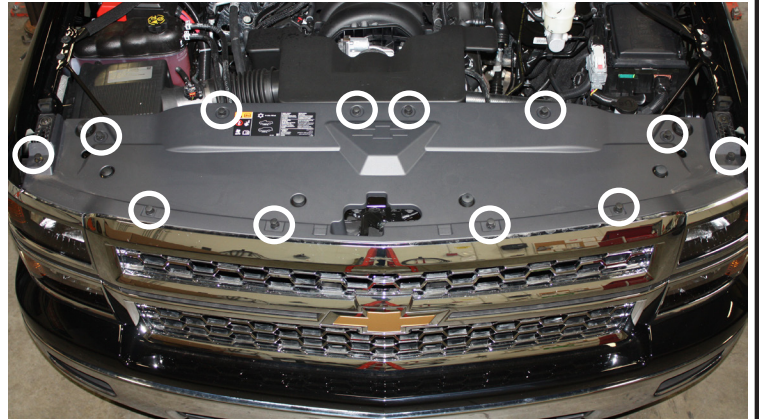


Figure 2

2. Remove the four screws that hold the top of the grille in position. Remove grille completely.



Figure 3

3. From underneath the vehicle, remove the three bolts holding side braces to vehicle frame.
4. Repeat for other side.

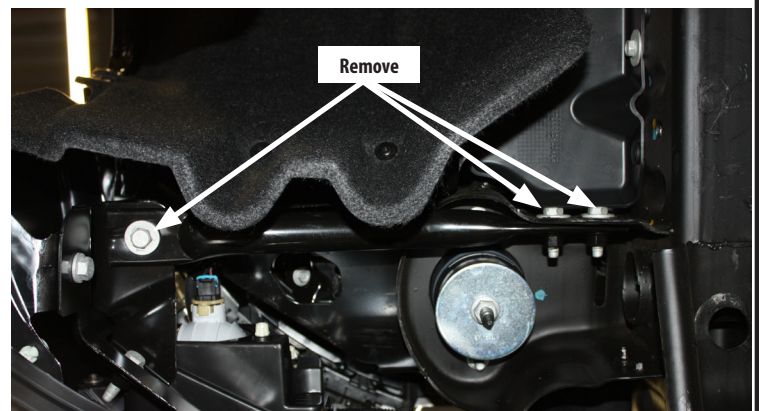


Figure 4

INSTALLATION INSTRUCTIONS

5. Unplug/detach the fog lamp harness located behind the center of the bumper.

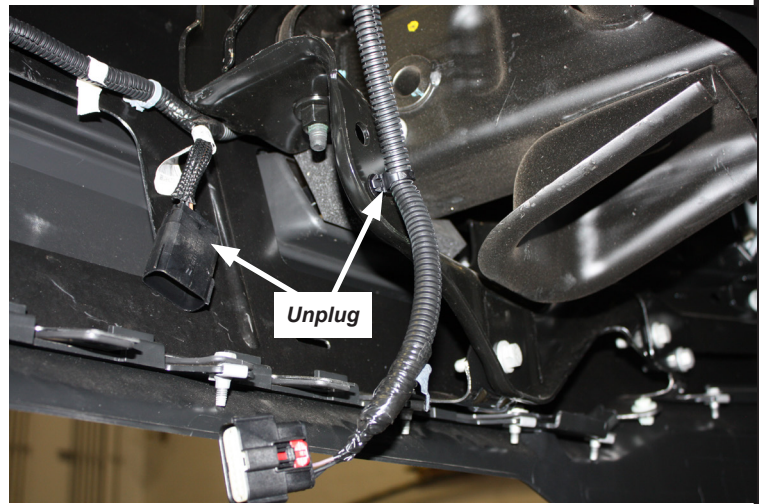


Figure 5

6. Remove the upper and lower bolts (four in total) that attach the bumper to the vehicle frame.

CAUTION

- Always use assistance when moving or lifting heavy parts.

7. Remove bumper.

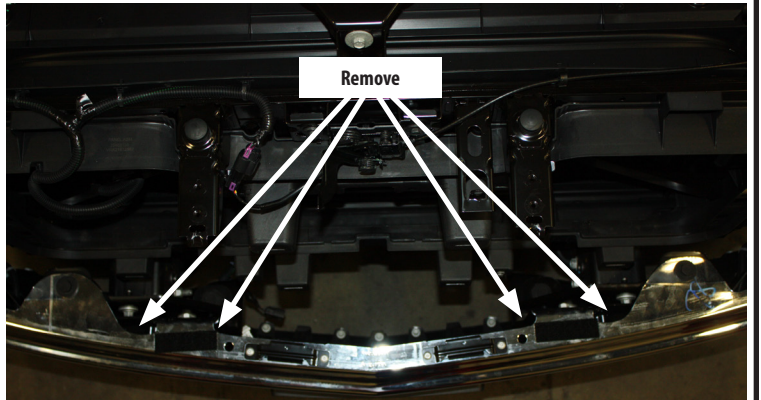


Figure 6

8. Remove the mounting flange caps from frame, by removing the four bolts (from each side).

9. Remove the two bolts (each side) that secure the tow hooks to vehicle frame.

10. Remove tow hooks completely. You will not be reusing.

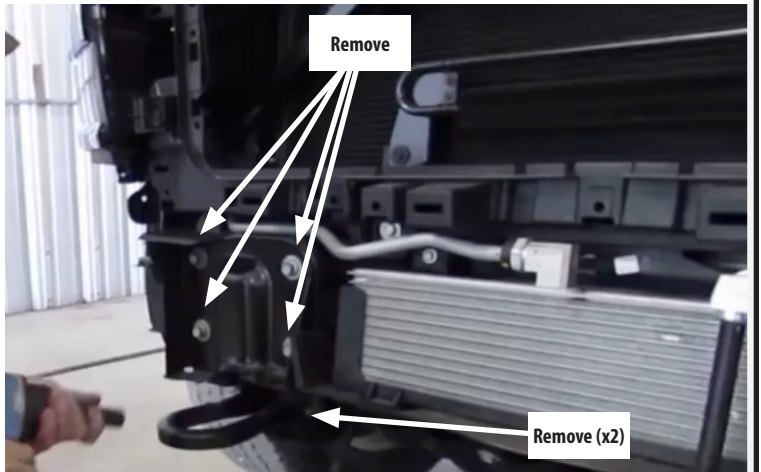


Figure 7

11. Place the grille back into place.

12. Install the four screws that hold the top of the grille in position.

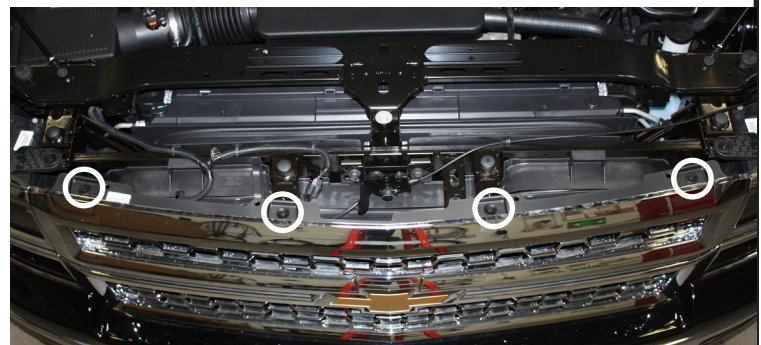


Figure 8

13. Install the plastic shroud covering the radiator by reinstalling the 12 plastic push/pull pins.

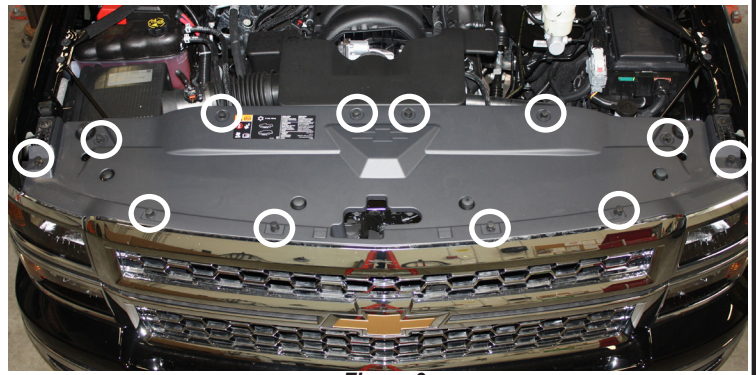


Figure 9

14. Install lower frame extension brackets (A7 & A9) using bolts (B6), lock washers (B10), washers (B9) and bolt plates (A10) on bottom and one bolt (B2), two washers (B9), lock washer (B10) and nut (B3) on top.

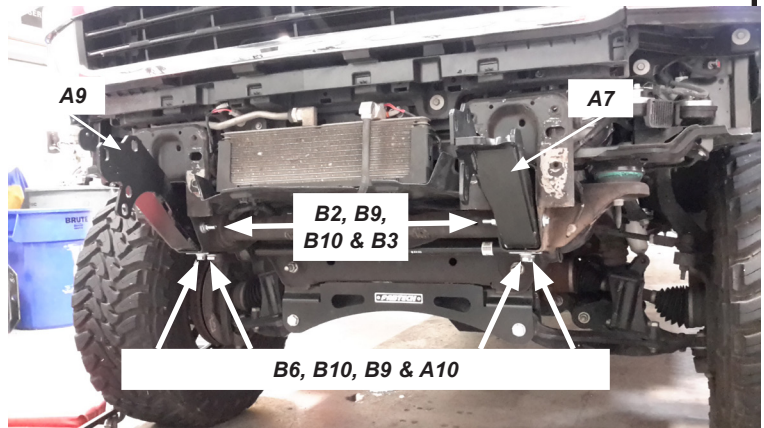


Figure 10

15. Refer to exploded view on page 3.

16. Install upper frame extension brackets (A6 & A8).
- For upper mounting holes: use two bolts (B6), washer (B9), spacer (B8), lock washer (B10) and nut (B7).
 - For lower mounting hole: use one bolt (B6), two washers (B9), lock washer (B10) and nut (B7).



Figure 11

17. Refer to parts list exploded view on page 3.

18. Place bumper (A1) on to brackets. Install the bolts (B6) with washers (B9), lock washer (B10) and nut (B7) - along with two 7/16" bolts (B4), four washers (B9), two lock washers (B1) and two nuts (B7) supplied in your hardware kit. See Figures 12 and 13. Hand tighten only at this time.

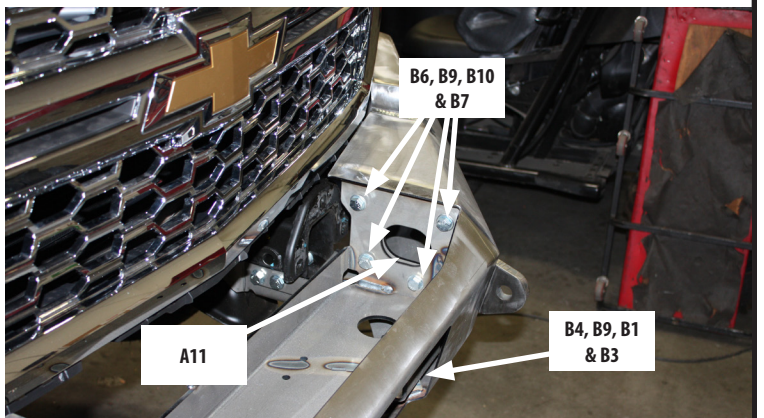


Figure 12

19. Refer to exploded view on page 3.

NOTE: The bumper may require shims (A11) to take up the space between the bumper and the frame bracket. Refer to exploded view on page 3.

20. Repeat for other side.

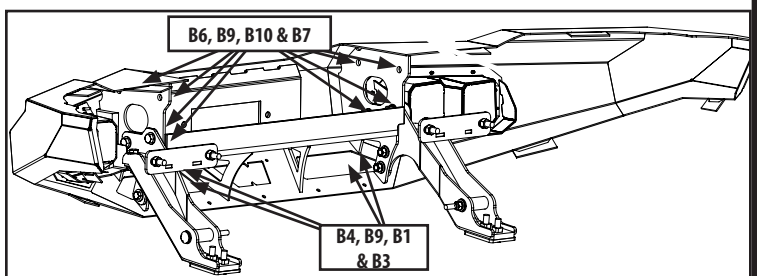


Figure 13

21. Install fairlead (using hardware found in winch kit). Tighten to recommended torque.

22. Tighten lower frame brackets at this time.

23. Position bumper in final desired place and tighten all hardware at this time.



Figure 14

24. While holding light bracket (A5) in place (from under and behind bumper), line up light bezel (A6) through front bumper light port to bracket. Secure pieces together with ten stainless steel socket head screws (B8). Review exploded view on page 3.

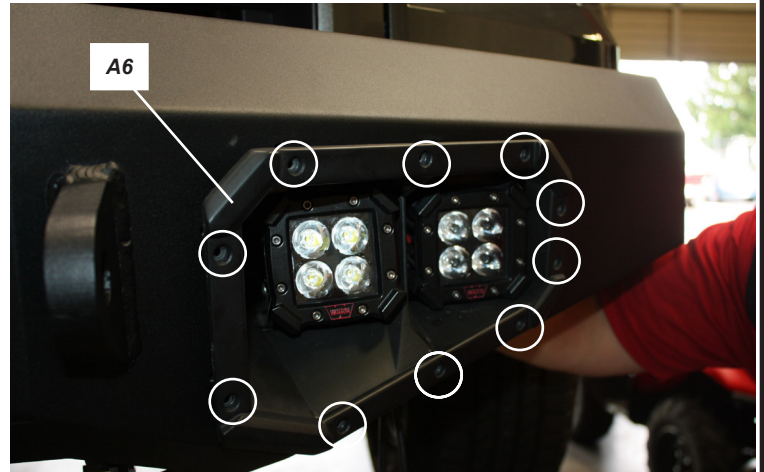


Figure 15

24. Repeat for other side.

NOTE: Light bezels are equipped with removable panels for lights. Lights show installed sold separately.



Figure 16

25. Mark inner fender skirt with tape to locate desired amount of excess to trim off. Carefully trim.

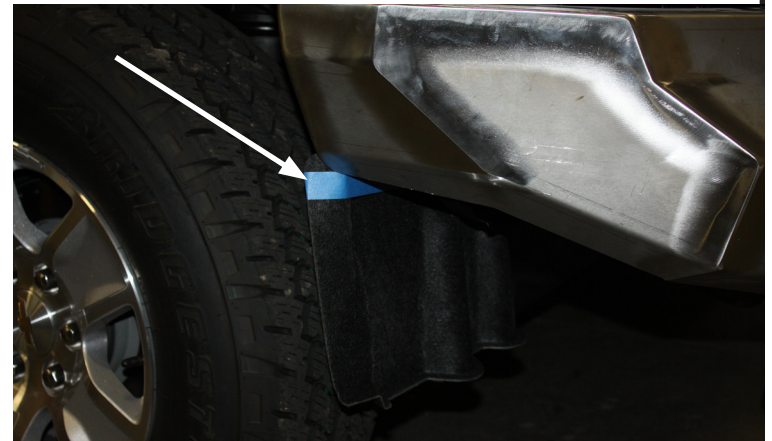


Figure 17

26. If equipped, remove bumper support backing plate off stock bumper to expose park sensor harness, sensors and sensor carriage.

27. Remove park sensor harness.

28. Remove sensors from sensor carriage.

29. Remove the carriage from stock bumper.

NOTE: *Stock bumper is not equipped with carriages in inner positions. Two additional OEM outer sensor carriages must be purchased from vehicle dealer to be used in Warn Bumper.*

30. Install sensor carriage into new Warn bumper in the same orientation as it was removed from stock bumper.

NOTE: *If vehicle is not equipped with sensors, use provided sensor hole plug to install in new Warn bumper.*

31. Install sensor into carriage and park sensor harness into new Warn bumper.

NOTE: *You may have to lengthen your harness in some applications.*

32. If not installing optional Ascent bar accessories, plug unused holes with provided hole plugs (B11). Refer to exploded view on page 3.

33. Your installation is now complete.

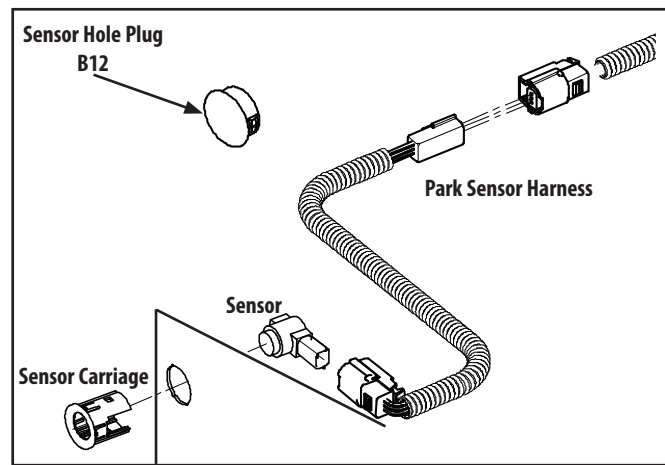


Figure 18

MAINTENANCE / CARE

1. Inspect all parts on the winch, winch mount, and related hardware prior to each use. Replace all hardware that appears rusted or deformed.
2. Inspect all nuts and bolts on the winch, winch mount, and related hardware prior to each use. Tighten all nuts that appear to be loose. Stripped, fractured, or bent bolts or nuts need to be replaced.
3. Check all cables prior to use. Replace cables that look worn or frayed.
4. Check all moving or rotating parts. Remove debris that may inhibit the part from moving freely.

CARELESS INSTALLATION AND OPERATION CAN RESULT IN SERIOUS INJURY OR EQUIPMENT DAMAGE. READ AND UNDERSTAND ALL SAFETY PRECAUTIONS AND OPERATING INSTRUCTIONS BEFORE INSTALLING AND OPERATING THIS PRODUCT.

