



INSTALLATION INSTRUCTIONS

MID-FRAME BUMPER

Part Number: 95568

Application: 2015 Super Duty Ford F-250 and F350

GENERAL SAFETY PRECAUTIONS

Your safety, and the safety of others, is very important. To help you make informed decisions about safety, we have provided installation and operating instructions and other information on labels and in this guide. This information alerts you to potential hazards that could hurt you or others. It is not possible to warn you about all potential hazards associated with this product, you must use your own good judgment.

CARELESS INSTALLATION AND OPERATION CAN RESULT IN SERIOUS INJURY OR EQUIPMENT DAMAGE. READ AND UNDERSTAND ALL SAFETY PRECAUTIONS AND OPERATING INSTRUCTIONS BEFORE INSTALLING AND OPERATING THIS PRODUCT.

This guide identifies potential hazards and has important safety messages that help you and others avoid personal injury or death. **WARNING** and **CAUTION** are signal words that identify the level of hazard. These signal words mean:

▲WARNING signals a hazard that could cause serious injury or death, if you do not follow recommendations. **▲CAUTION** signals a hazard that may cause minor to moderate injury, if you do not follow recommendations.

This guide uses **NOTICE** to call attention to important mechanical information, and **Note:** to emphasize general information worthy of special attention.

▲ WARNING

IMPACT AND MOVING PARTS ENTANGLEMENT HAZARD

Failure to observe these instructions could lead to severe injury or death

- **Always** take time to fully read the Instructions and/or Operations Guide, and/or Basic Guide to Winching Techniques, in order to understand your winch and its operations.
- **Always** use extreme caution when drilling on any vehicle. Make sure that all fuel lines, brake lines, electrical wires, and other objects are not punctured or damaged when/if drilling on the vehicle. Thoroughly inspect the area to be drilled (on both sides of material) prior to drilling, and relocate any objects that may be damaged. Failure to inspect the area to be drilled may result in vehicle damage, electrical shock, fire or personal injury.
- **Always** wear safety glasses when installing this kit. A drilling operation will cause flying metal chips. Flying chips can cause eye injury.
- **Always** use extreme caution when cutting and trimming during fitting.
- **Always** remove jewelry and wear eye protection.
- **Never** lean over battery while making connections.
- **Never** route electrical cables:
 - o Across any sharp edges.
 - o Through or near moving parts.
 - o Near parts that become hot.
- **Always** insulate and protect all exposed wiring and electrical terminals.
- **Always** install terminal boots as directed in installation instructions.
- **Always** use appropriate and adequate care in lifting components into place.
- **Always** insure components will remain secure during installation and operation.
- **Always** tighten all nuts and bolts securely, per the installation instructions.
- **Always** perform regular inspections and maintenance on the plow mechanism, fasteners, cable and related hardware.
- **Always** replace all worn or damaged parts before operating.
- **Never** operate this WARN product with damaged or missing parts.

Read installation and operating instructions thoroughly.

WARN INDUSTRIES, INC. 12900 S.E. Capps Road,
Clackamas, OR USA 97015-8903, 1-503-722-1200, FAX: 1-503-722-3000
Customer Service: 1-800-543-9276
Dealer Locator Service: 1-800-910-1122
International Fax: 1-503-722-3005

⚠ CAUTION

MOVING PARTS ENTANGLEMENT HAZARD

Failure to observe these instructions could lead to minor or moderate injury

- **Always** take time to fully read and understand the installation and Operations Guide included with this product.
- **Never** operate this product if you are under 16 years of age.
- **Never** operate this product when under the influence of drugs, alcohol or medications.

Read installation and operating instructions thoroughly.

NOTICE

EQUIPMENT DAMAGE

- **Always** refer to the Installation and Specification Guide, supplied in the winch kit, for all wiring schematics and specific details on how to wire this WARN product to your vehicle.

Read installation and operating instructions thoroughly.

BEFORE YOU BEGIN

NOTICE



This product may interfere with driver assist systems such as adaptive cruise control and parking assist systems that have sensors or cameras installed in the bumpers or front grill area. If your vehicle is equipped with any of these systems or features, consult your vehicle owner's manual before installing this product. These systems may need to be disabled as a result of installing this product.

TABLE OF CONTENTS

Tools Required.....	page 2
Torque Specifications.....	page 2
Parts List.....	page 3
Installation.....	page 4-8
Maintenance/Care.....	page 8

TOOLS REQUIRED

- Standard wrenches
- Standard sockets

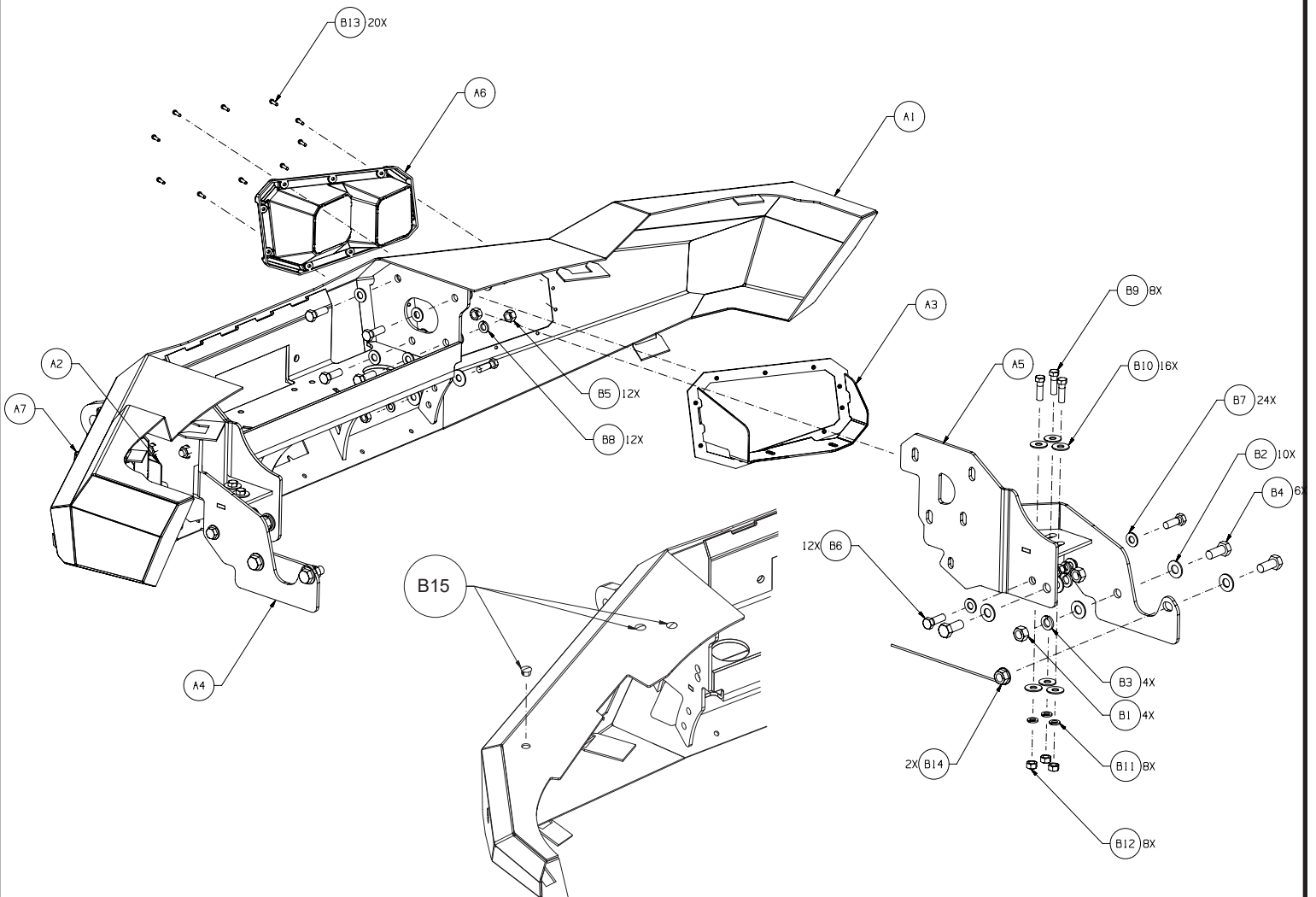
TORQUE SPECIFICATIONS

Please use the recommended torque specifications when assembling this product unless otherwise specified in the instructions.

FASTENER SIZE	FASTENER TORQUE		FASTENER SIZE	FASTENER TORQUE	
	lb-ft	(N.m)		lb-ft	(N.m)
1/4"	8	(11)	M4	(2)	3
5/16"	17	(23)	M5	(4.5)	6
3/8"	30	(40)	M6	(7.5)	10
7/16"	48	(66)	M8	(18)	25
1/2"	74	(100)	M10	(37)	50
9/16"	106	(144)			
5/8"	148	(200)			
3/4"	269	(364)			

PARTS LIST

ITEM	PART NO.	DESCRIPTION	QTY	ITEM	PART NO.	DESCRIPTION	QTY
A1	95575	WLDMNT BMPR FRT	1	B1	6821	5/8-11 FIN.HX.NUT, ZN.KB	6
A2	95438	WLDMNT LIGHT BRKT LH	1	B2	68959	WSHR-5/8-TYPE A PLAIN NARROWKB	12
A3	95458	WLDMNT LIGHT BRKT RH	1	B3	6820	5/8 MED. LK.WASHER ZN	6
A4	95584	WLDMNT FRM BRKT LH	1	B4	6819	5/8-11X1 1/2 HX.CPSCR	6
A5	95586	WLDMNT FRM BRKT RH	1	B5	1323	NUT, HEX, 1/2-13, ZINC	12
A6	94888	LIGHT PORT RH	1	B6	6818	CPSCR, HEX, 1/2-13X1-1/2	12
A7	94889	LIGHT PORT LH	1	B7	9213	1/2 SAE FLAT WASHER ZINC	24
				B8	2596	WSHR, LOCK, 1/2, ZINC	12
				B9	7165	CPSCR, HEX, 7/16-14X1 1/2, GRD 5	8
				B10	7676	7/16 USS FLAT WASHER	16
				B11	2146	WASHER, LOCK, 7/16, SPRNG	8
				B12	2583	NUT, HEX, 7/16-14, GR2	8
				B13	91541	CPSCR SOCKET HD 10-24 X X1.25 SS	20
				B14	38065	NUT STICK ASSY	2
				B15	100661	9/16 LOCKING PLUG	6



INSTALLATION INSTRUCTIONS



Figure 1

1. From behind fog lights, remove the two bumper brace bracket fasteners. *NOTE: You will not be reinstalling.*
2. Repeat for other side.



Figure 2

3. From under the center of bumper, attached to the core support, unplug fog light wire harness.
4. Unclip wire harness from core support.

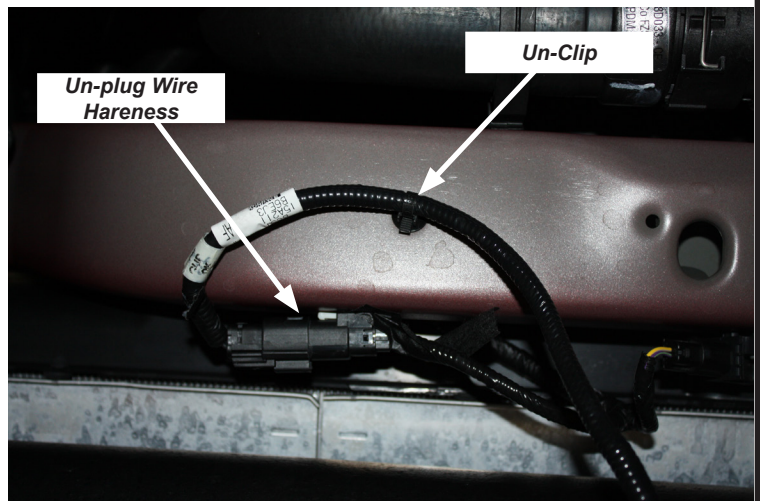


Figure 3

INSTALLATION INSTRUCTIONS

- Remove the three push pull clips from plastic air dam flap.
NOTE: You will not be reinstalling later.

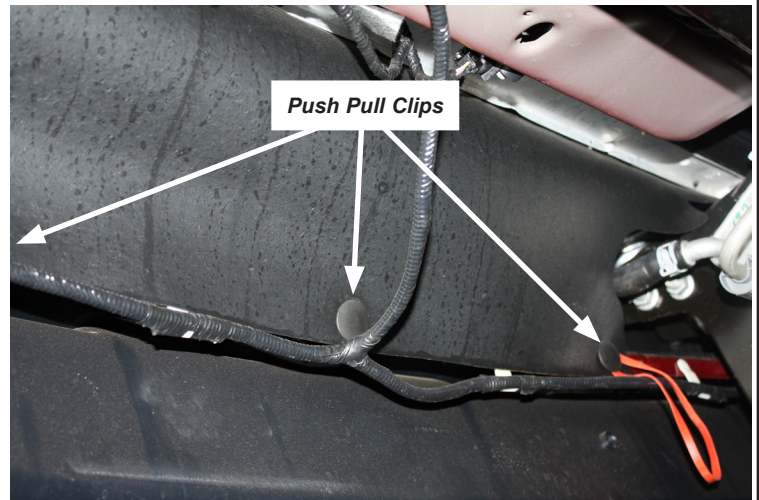


Figure 4

- Remove the six bumper mounting bolts (three on each side). *NOTE: Two of the bolts (one on each side) will need to be reached from behind the bumper.*
- For Diesel Models Only:** Detach the block heater plug from under inside of bumper.

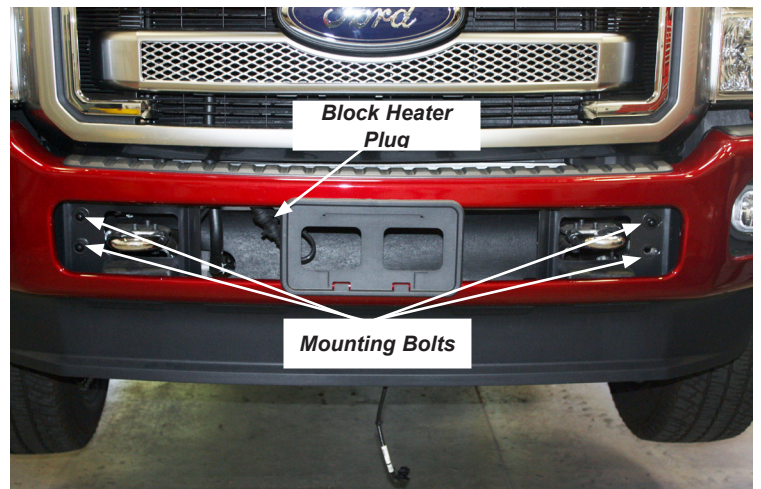


Figure 5

- Remove the three tow hook bolts.
- Remove four nuts from collision bracket.
- Remove collision bracket. *NOTE: You will not be reinstalling.*
- Repeat steps 8 through 10 for other side.

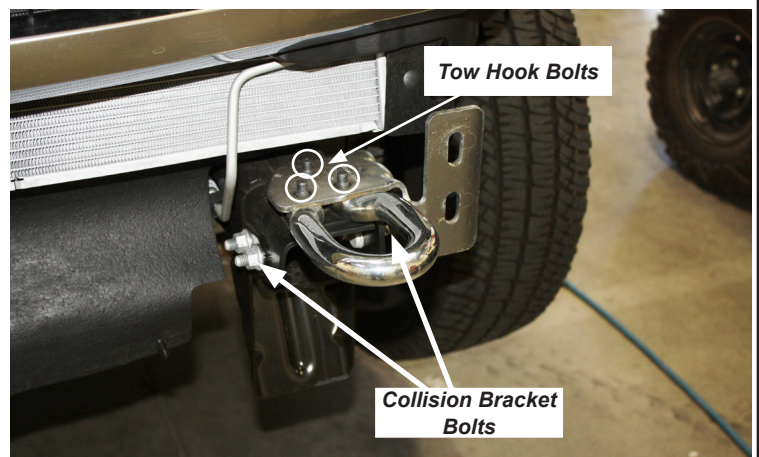


Figure 6

12. **For Diesel Models Only:** Unclip the block heater harness from frame rail.

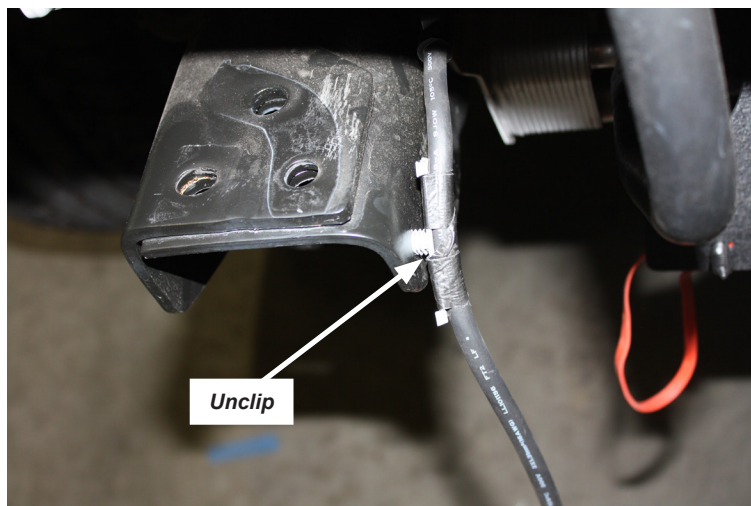


Figure 7

13. Place frame bracket in position and fasten using hardware (B1, B2, B3, B4, B5, B6, B7, B8, B9, B10, B11, B12 and B14). Refer to exploded view on page 3.

14. Repeat step 13 for other side.

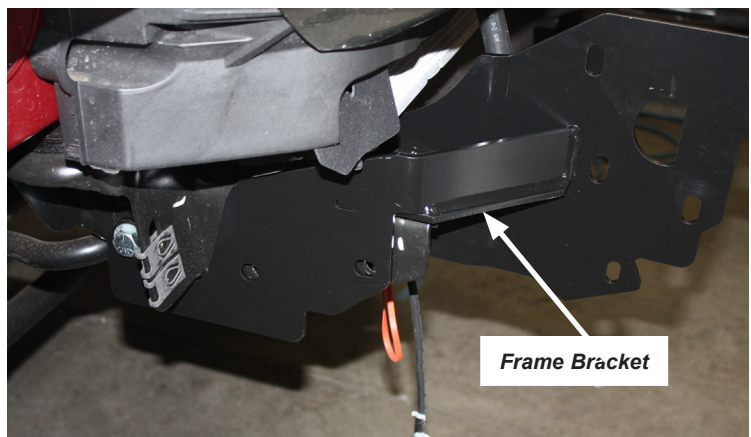


Figure 8

CAUTION

- **Always** use assistance when moving or lifting heavy parts.

15. With assistance, place bumper in position and secure to frame bracket with four B5, B6, B7 and B8 hardware. Review exploded view on page 3.

16. Repeat for other side.



Figure 9

17. Install one (B9, B10, B11 and B12) through bumper support brace to frame bracket.

18. Repeat for other side.

19. Tighten ALL hardware at this time.

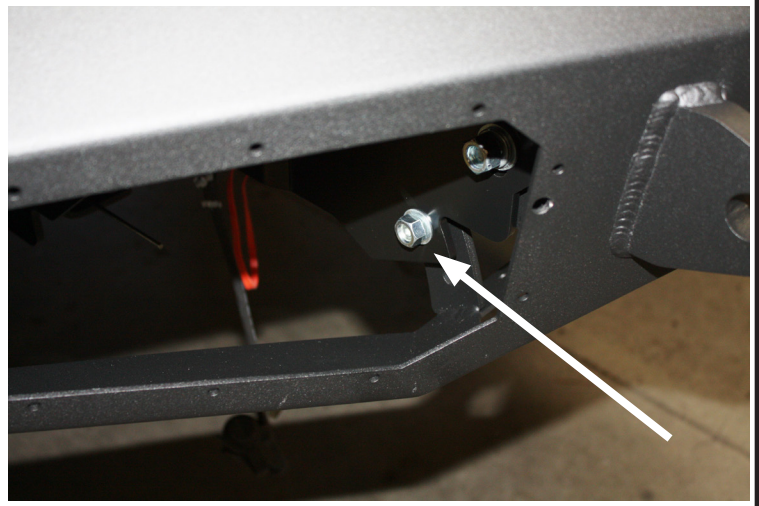


Figure 10

20. While holding light bracket (A3) in place (from under and behind bumper), line up light bezel (A6) through front bumper light port to bracket. Secure pieces together with ten stainless steel socket head screws (B13). Review exploded view on page 3.

21. Repeat for other side.

NOTE: Light bezels are equipped with removable panels for lights. Lights show installed sold separately.

22. If not installing optional Ascent bar accessories, plug unused holes with provided hole plugs (B15). Refer to exploded view on page 3.



Figure 11

23. Installation is now complete.



Figure 12

MAINTENANCE / CARE

1. Inspect all parts on the winch, winch mount, and related hardware prior to each use. Replace all hardware that appears rusted or deformed.
2. Inspect all nuts and bolts on the winch, winch mount, and related hardware prior to each use. Tighten all nuts that appear to be loose. Stripped, fractured, or bent bolts or nuts need to be replaced.
3. Check all cables prior to use. Replace cables that look worn or frayed.
4. Check all moving or rotating parts. Remove debris that may inhibit the part from moving freely.

CARELESS INSTALLATION AND OPERATION CAN RESULT IN SERIOUS INJURY OR EQUIPMENT DAMAGE. READ AND UNDERSTAND ALL SAFETY PRECAUTIONS AND OPERATING INSTRUCTIONS BEFORE INSTALLING AND OPERATING THIS PRODUCT.

