

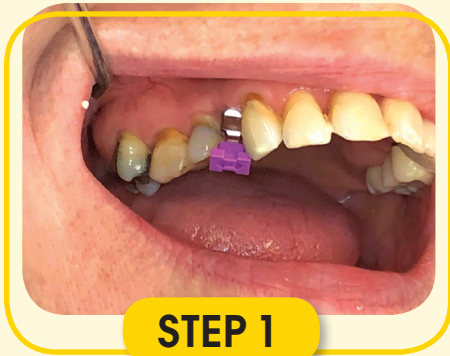
IMPRESSION VPS
for Implants

- Stiffest (Highest Durometer) VPS
- Most Hydrophilic VPS
- Most Accurate VPS
- European Made
- Vacuum Packaged VPS
- Fully Scannable VPS
- Economical VPS



USE YOUR TRAY AND YOUR METHOD WITH MITITM VPS TO ACHIEVE EXCELLENT IMPLANT IMPRESSIONS.

FOR SUPERIOR RESULTS
follow our 6 easy to use instruction steps below



STEP 1

Place impression coping into mouth and verify proper seating (with x-ray if necessary).



STEP 2

Have assistant load MITI Heavy-Body into tray. Apply MITI Light-Body VPS to impression coping with intra-oral tip. Leave some of the coronal portion of coping uncovered.



STEP 3

After tray is filled with MITI Heavy-Body VPS and MITI Light-body VPS is applied to coping, apply MITI Heavy-body VPS around the coping and the applied MITI Light-body VPS.



STEP 4

Seat tray (loaded with MITI Heavy-Body VPS) around coping. Wait 2.5 min until set.



STEP 5

Remove tray from mouth. Unscrew impression coping from implant.



STEP 6

Insert impression coping into impression. Ensure correct seating and no gaps at margin.