

HEARTLAND USA®

Heart Breaker 240 Conversion

Fits Breakout® Model Softails®

(Instruction)

We recommend that you mock up bike before you paint parts.
We also recommend that you lower the bike to achieve the desired look.



PARTS LIST

Heartbreaker 240 Conversion Includes:

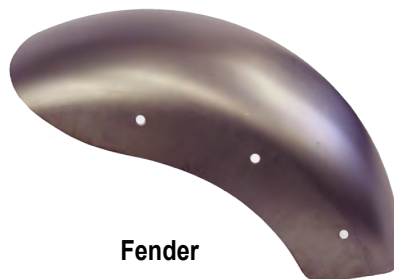
Solo Seat
Struts
Fender
Steel Rock Guard
Light Brackets
Hardware



Solo Seat



Struts



Fender



Left Rock Guard



Right Rock Guard



Light Brackets



Rock Guard Bolts

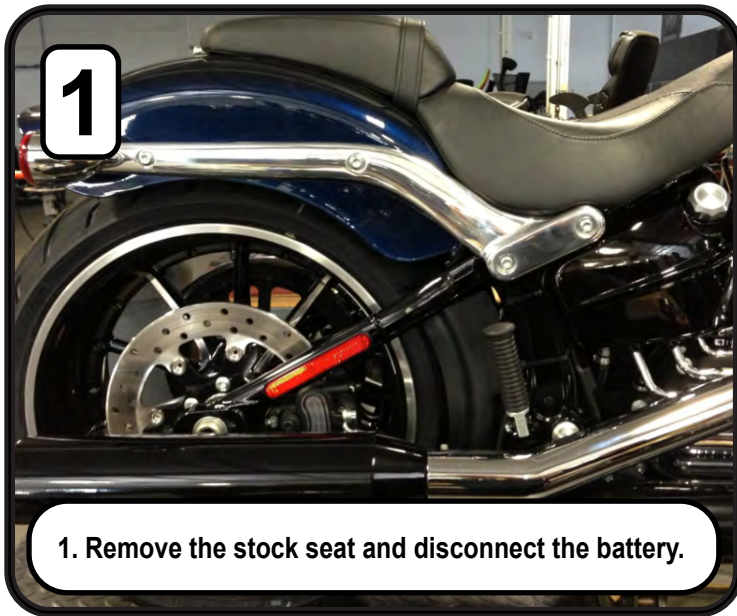


Strut and Fender Bolts

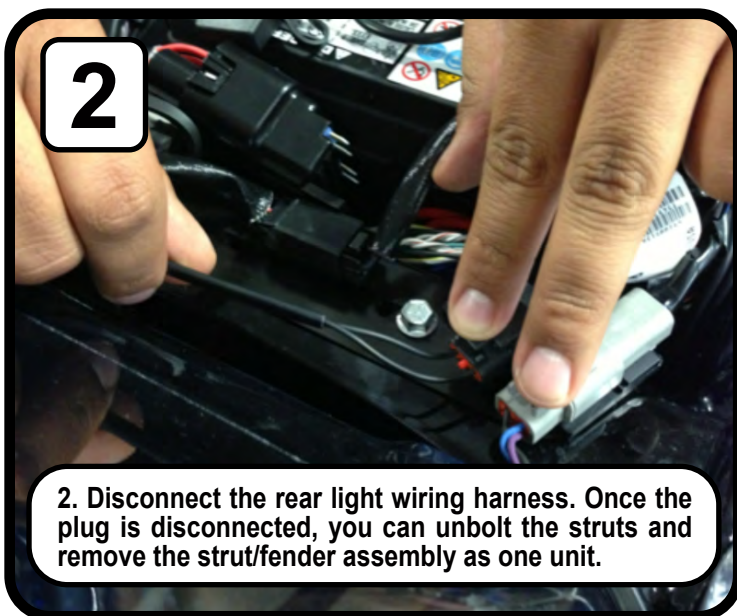
2466 E. Fender Ave. Suite B Fullerton CA. 92831 Ph: 310-822-2697 Fax: 310-634-1271

www.heartlandbiker.com

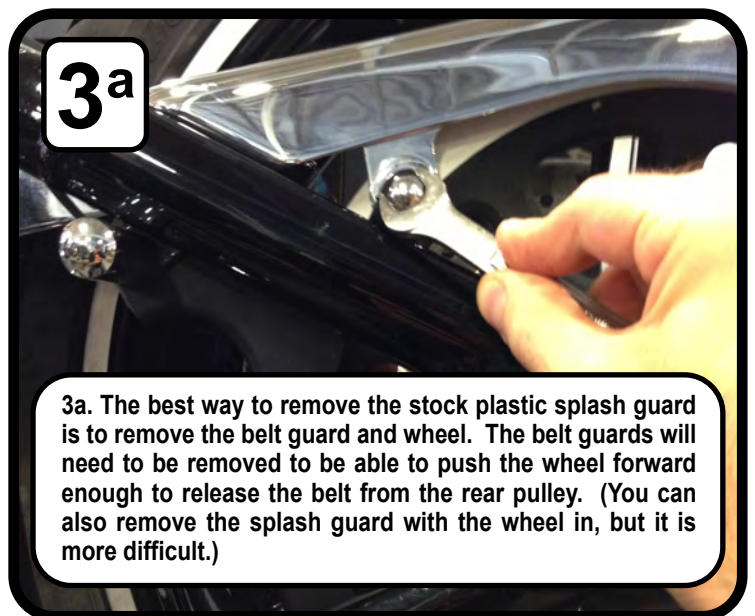
We recommend reading through the entire install process before beginning.



1. Remove the stock seat and disconnect the battery.



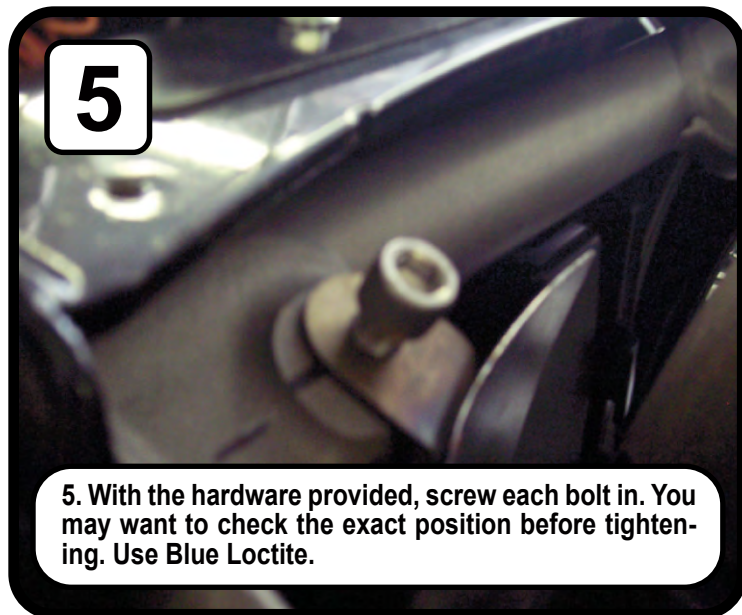
2. Disconnect the rear light wiring harness. Once the plug is disconnected, you can unbolt the struts and remove the strut/fender assembly as one unit.



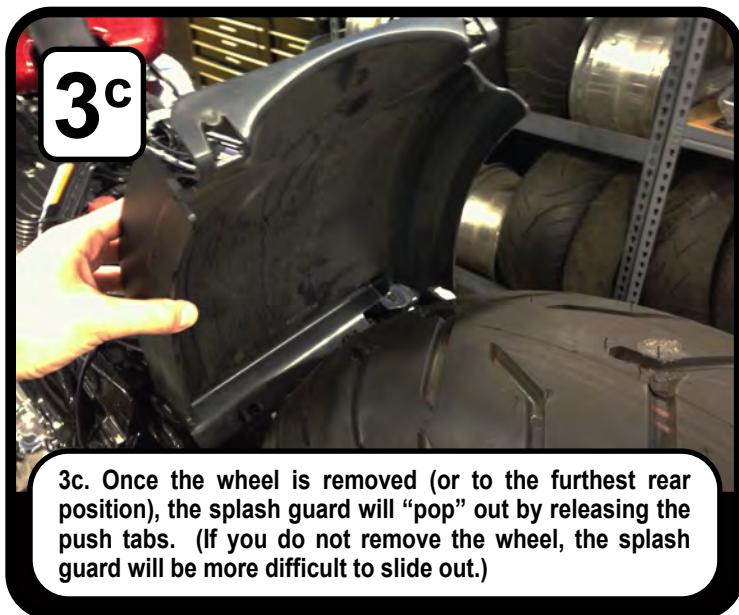
3a. The best way to remove the stock plastic splash guard is to remove the belt guard and wheel. The belt guards will need to be removed to be able to push the wheel forward enough to release the belt from the rear pulley. (You can also remove the splash guard with the wheel in, but it is more difficult.)



3b. Make sure to mark the axle and axle adjuster position for reference.



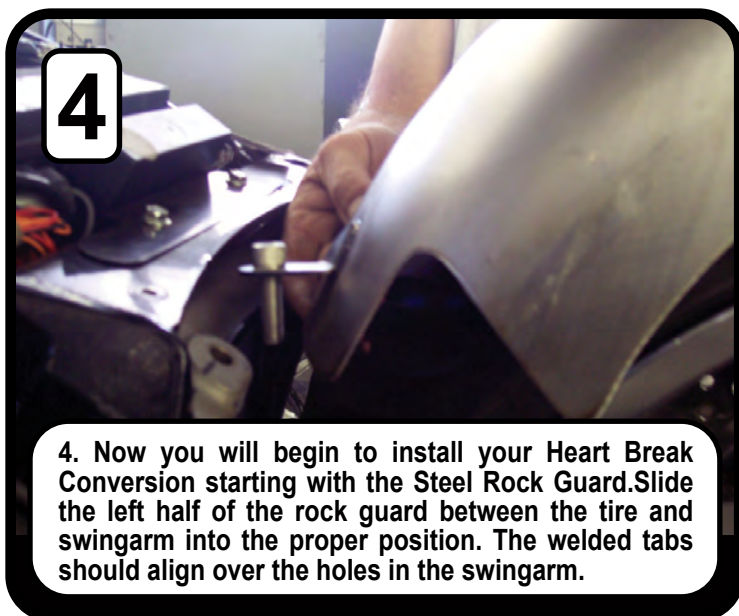
5. With the hardware provided, screw each bolt in. You may want to check the exact position before tightening. Use Blue Loctite.



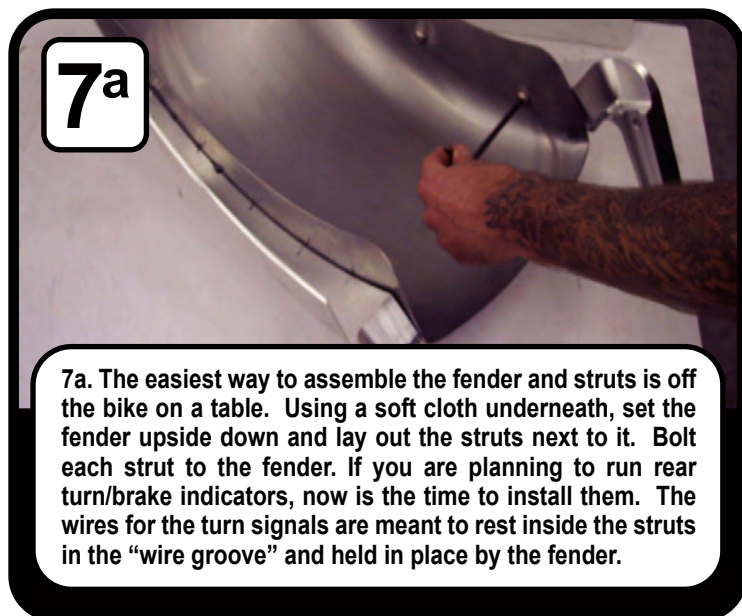
3c. Once the wheel is removed (or to the furthest rear position), the splash guard will “pop” out by releasing the push tabs. (If you do not remove the wheel, the splash guard will be more difficult to slide out.)



6. Repeat step 5 & 6 to install right half of rock guard.



4. Now you will begin to install your Heart Break Conversion starting with the Steel Rock Guard. Slide the left half of the rock guard between the tire and swingarm into the proper position. The welded tabs should align over the holes in the swingarm.



7a. The easiest way to assemble the fender and struts is off the bike on a table. Using a soft cloth underneath, set the fender upside down and lay out the struts next to it. Bolt each strut to the fender. If you are planning to run rear turn/brake indicators, now is the time to install them. The wires for the turn signals are meant to rest inside the struts in the “wire groove” and held in place by the fender.

7b



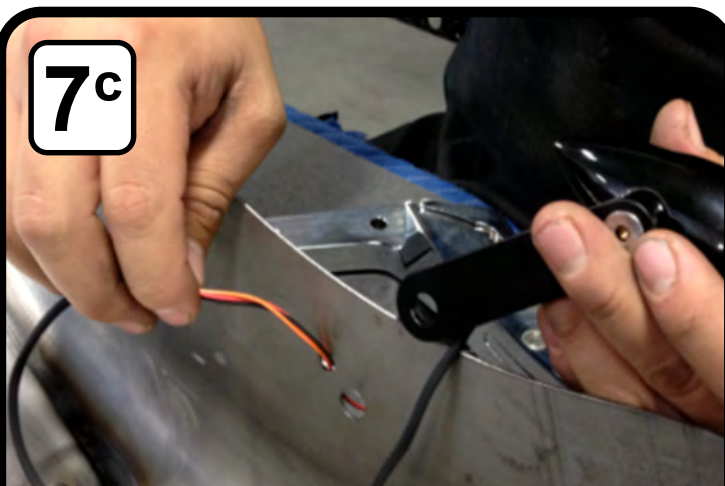
7b. First bolt the light to the light bracket.
(Always test lights before installation.)

8



8. Now that the struts are mounted to the fender, you will bolt them to the frame. Using the hardware provided, screw each bolt in to the frame loosely. When tightening the bolts start by snugging them down and then torque the rear bolts first, followed by the front bolts.

7c



7c. Feed the wires through the small hole from the inside out.

9

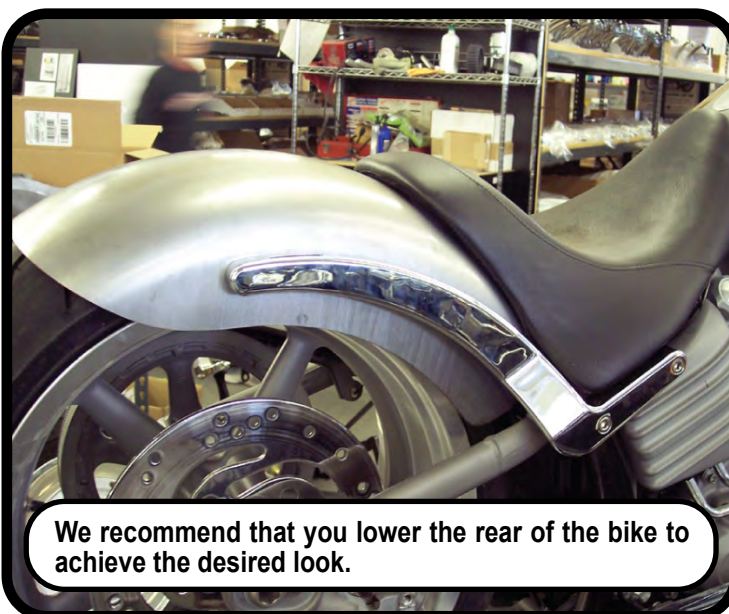


9. Install new supplied seat by starting at the nose and making sure the tongue is fitting in the frame. Then slowly bring the seat down while checking clearance. The seat should not interfere with anything in the battery box. Push back of seat to activate the suction cup. Make sure the suction cup release tab is pointing upwards for easy removal."

7d



7d. Push the wires into the channel on the inside of the strut. You may want to use tape to hold wires in place while bolting the strut to the fender. Make sure there is no slack in the wire and that it is not pinched.



We recommend that you lower the rear of the bike to achieve the desired look.

For BREAKOUT®

BILLET TEAR WIRING

3 – FUNCTION (RUN, TURN, BRAKE)

NEED – Contact Pins 20-01 gauge (Harley Part # 74191-98) 6 pcs.

TURN SIGNALS

Left Side:

- Black – Black
- Red – Blue/Purple
- Orange – Blue

Right Side Side:

- Black – Black
- Red – Blue/Black
- Orange – Blue

PLATE HOLDER W/ BRAKE WIRING

2 - FUNCTION (RUN, BRAKE)

NEED - Deutsch 6 way socket Housing (Harley Part # 72116-94BK) 1pc.

- Locking cap (Harley Part # 72156-94) 1pc.

- Contact pins 16-18 gauge (Harley Part # 72191-94) 3pcs.

- Black – Black
- Red – Blue/Red
- Orange – Red/Yellow

