

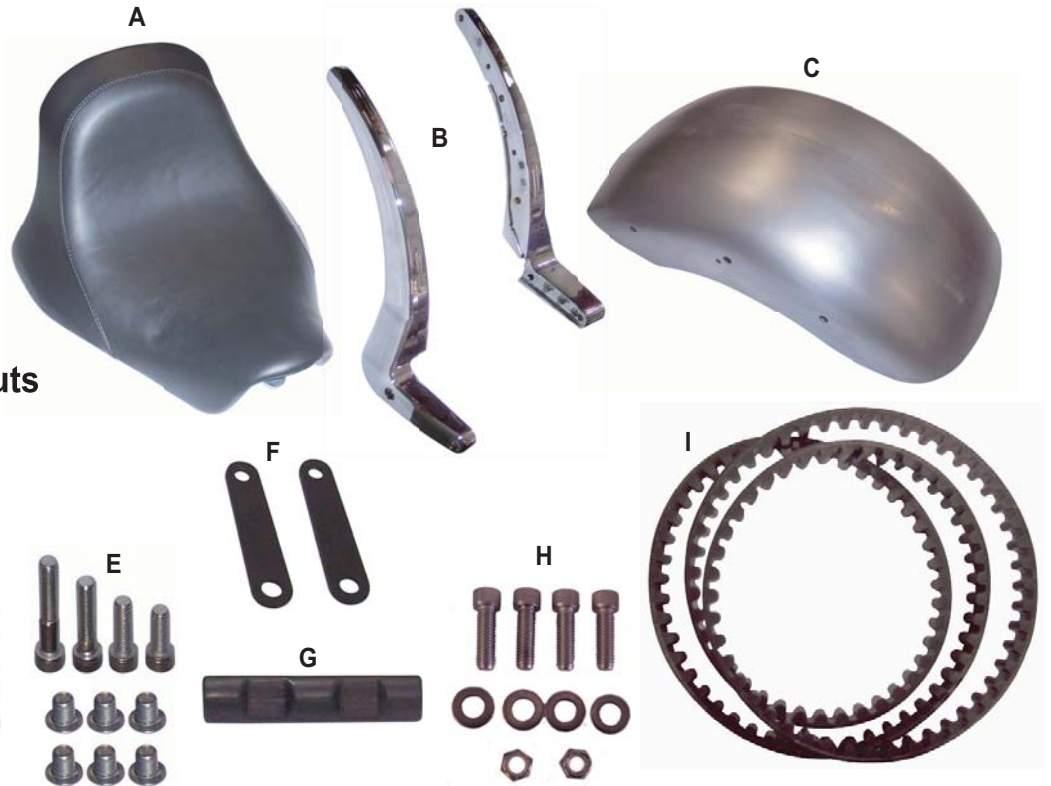
HEARTLAND USA[®]

E-ZRR 280 ROCKER CONVERSION (Instruction)



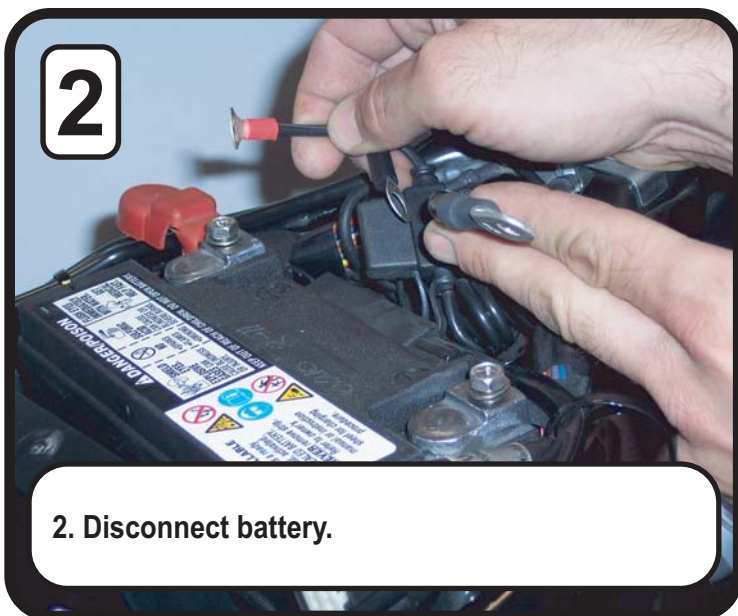
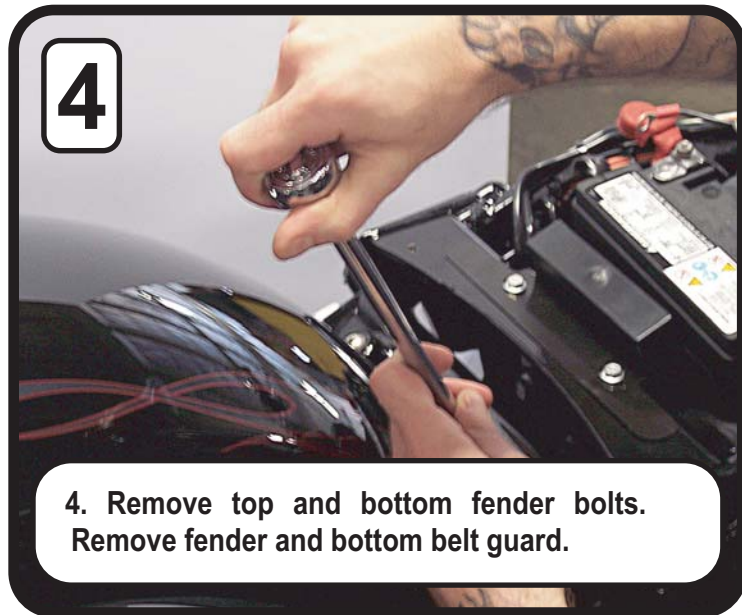
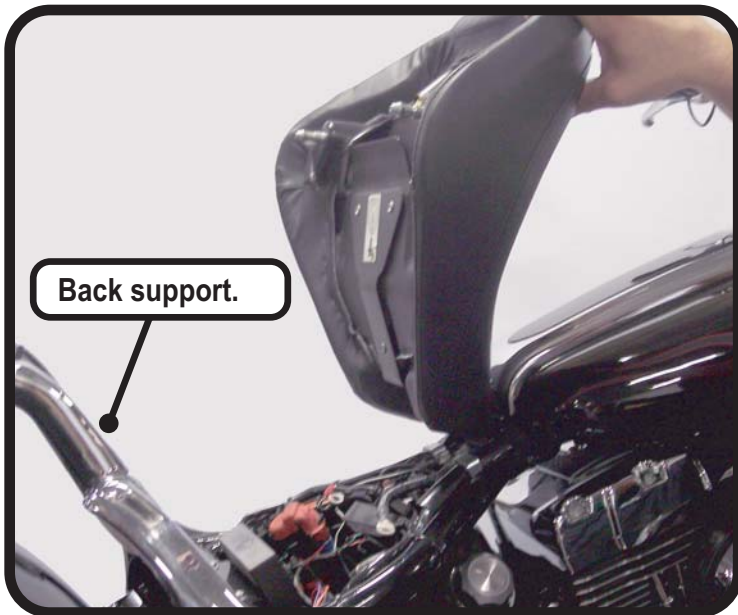
PARTS LIST

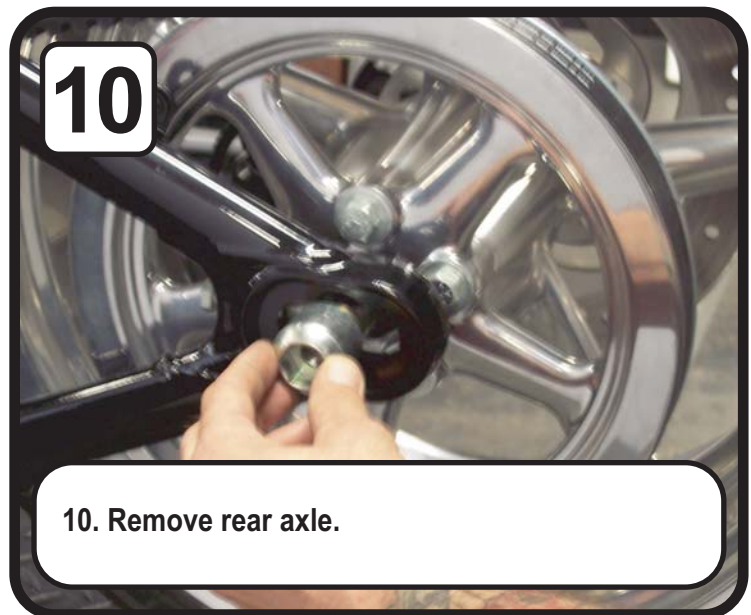
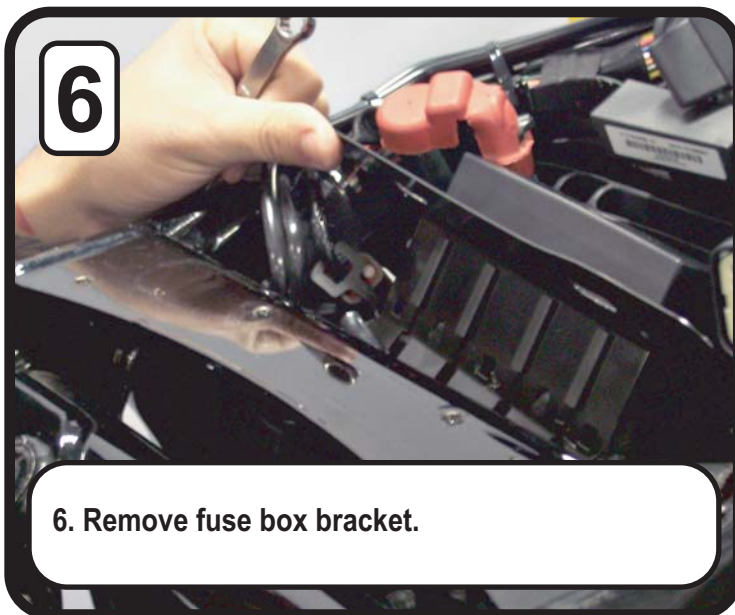
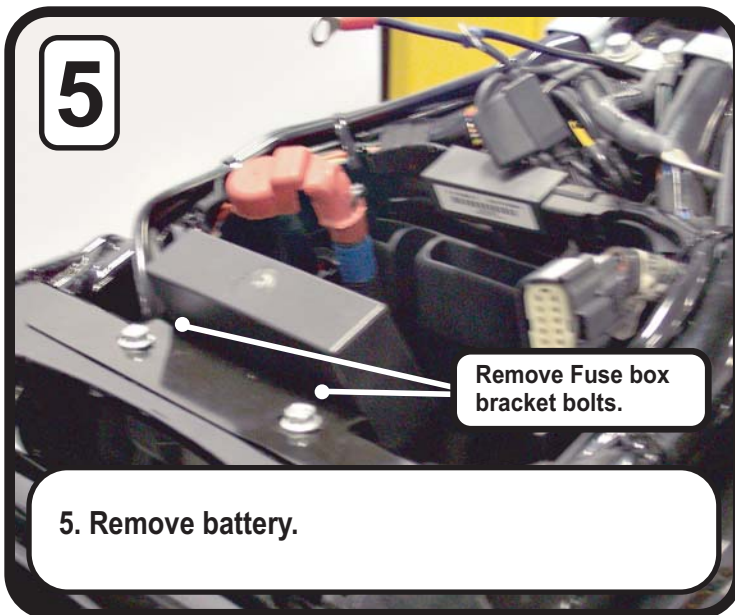
- (A) Solo Seat
- (B) HL Struts
- (C) Pre Drilled Fender
- (D) Steel Rock Guard
- (E) Strut & Fender Bolts
- (F) Light Brackets
- (G) Rubber Bump Stop
- (H) Rock Guard Bolts & Nuts
- (I) 20mm Belt



2466 E. Fender Ave. Suite B Fullerton CA. 92831 Ph: 310-822-2697 Fax: 310-634-1271

www.heartlandbiker.com





11



11. Remove wheel.

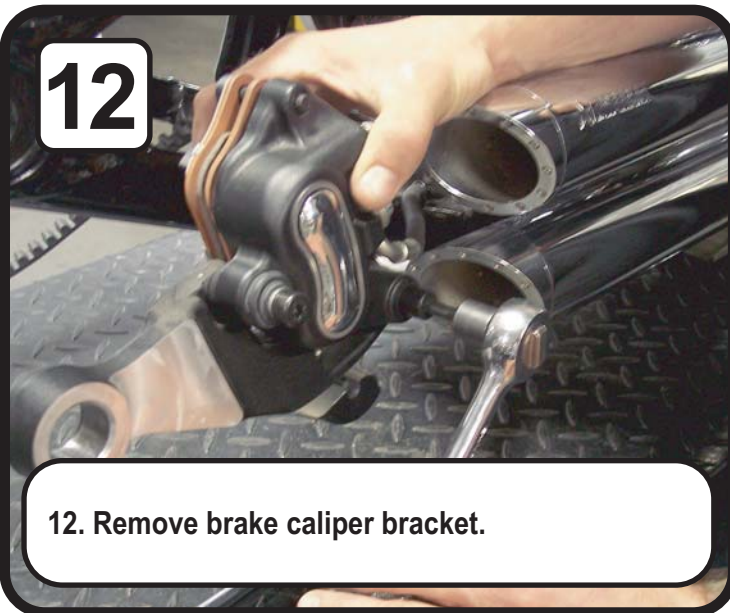
13



13. Grind down caliper perch.

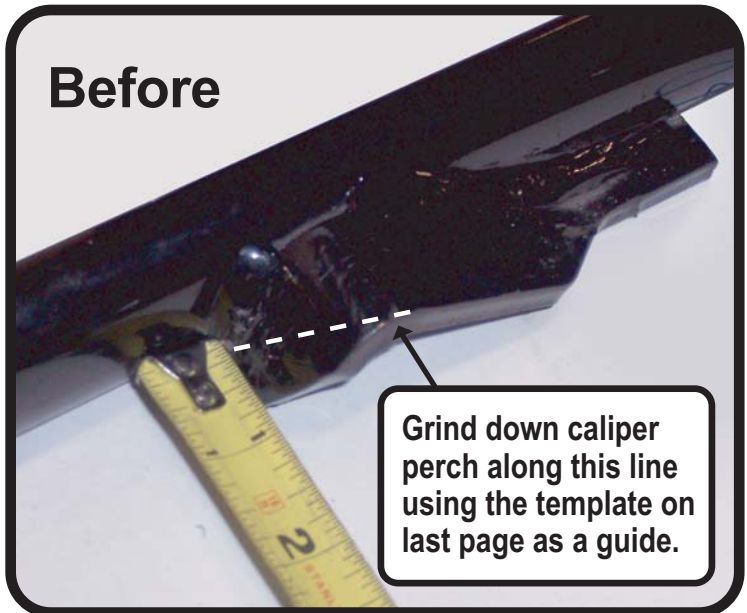
** Use the template on last page as a guide.*

12



12. Remove brake caliper bracket.

Before



Grind down caliper perch along this line using the template on last page as a guide.

After



12. Leave only 1/4" at this point to ensure rim clearance.

14

14. Remove Outer and Inner Primary Covers to install supplied 20mm belt. *Refer to Harley Davidson Factory Service Manual.

16

16. Install brake caliper bracket with supplied wheel spacers. Spacers come with wheel.

15

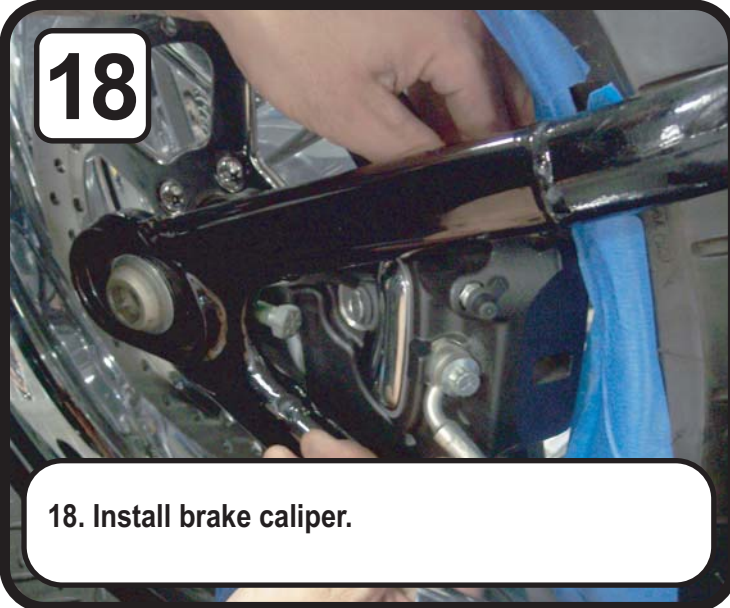
15. Install wheel at a slight angle to clear caliper perch.

17

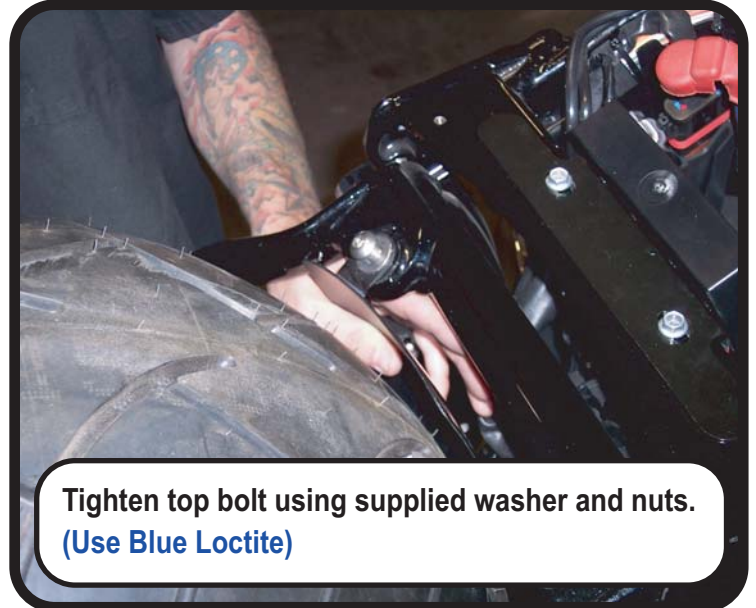
17. Install rear wheel axle.

Tape wheel to protect from scratching.

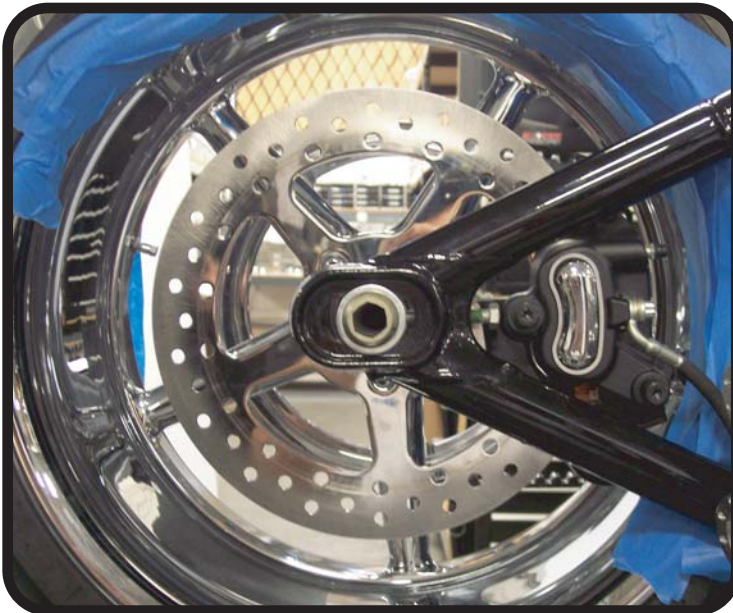
18



18. Install brake caliper.

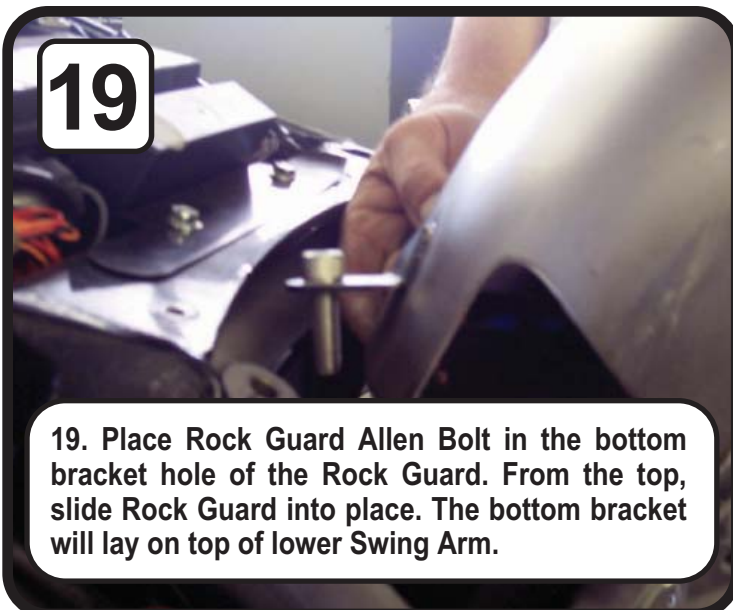


Tighten top bolt using supplied washer and nuts.
(Use Blue Loctite)



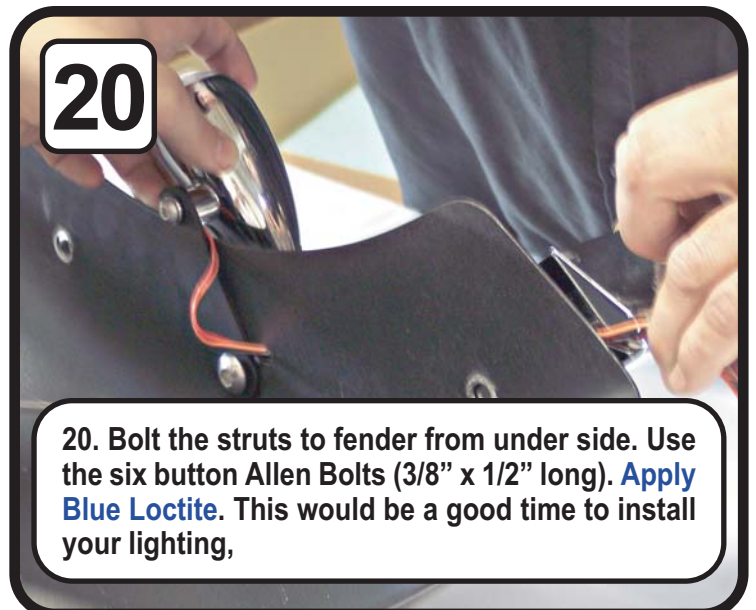
Tighten bottom bolt using supplied washer and nuts. (Use Blue Loctite)

19



19. Place Rock Guard Allen Bolt in the bottom bracket hole of the Rock Guard. From the top, slide Rock Guard into place. The bottom bracket will lay on top of lower Swing Arm.

20



20. Bolt the struts to fender from under side. Use the six button Allen Bolts (3/8" x 1/2" long). Apply Blue Loctite. This would be a good time to install your lighting,

21



21. Install turn indicators with light brackets provided while running the wiring through the hole provided in the fender. Make sure to use the wiring grooves on the back side of the strut to prevent pinching.

23



23. Install New Supplied Seat.

22

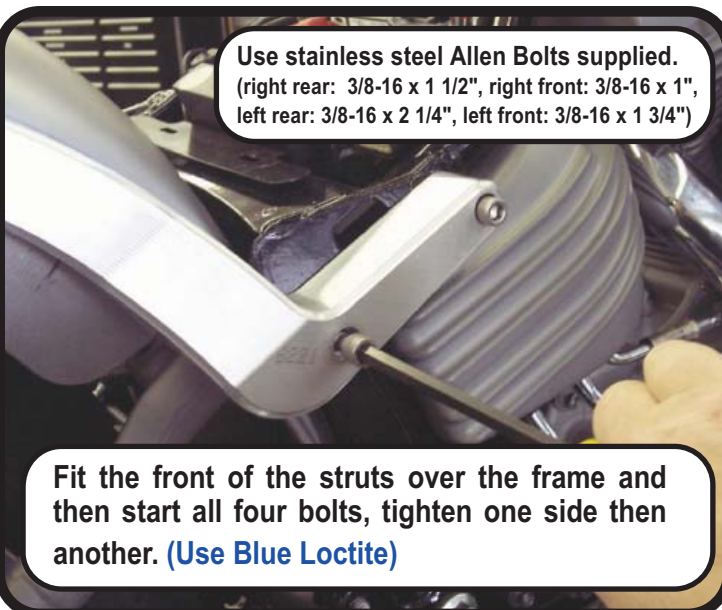


22. Mount Strut and Fender to bike.



We recommend that you lower the rear of the bike to achieve desired look. Lowering kit required.

Use stainless steel Allen Bolts supplied.
(right rear: 3/8-16 x 1 1/2", right front: 3/8-16 x 1",
left rear: 3/8-16 x 2 1/4", left front: 3/8-16 x 1 3/4")



Fit the front of the struts over the frame and then start all four bolts, tighten one side then another. (Use Blue Loctite)

Template for Step 13 on next page.

Template for Step 13

