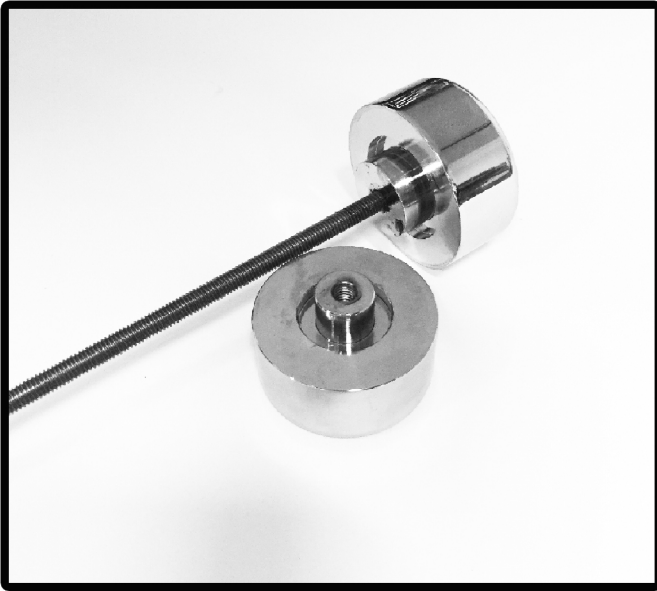


HEARTLAND USA[®]

Fender Conversions - Motorcycle Accessories

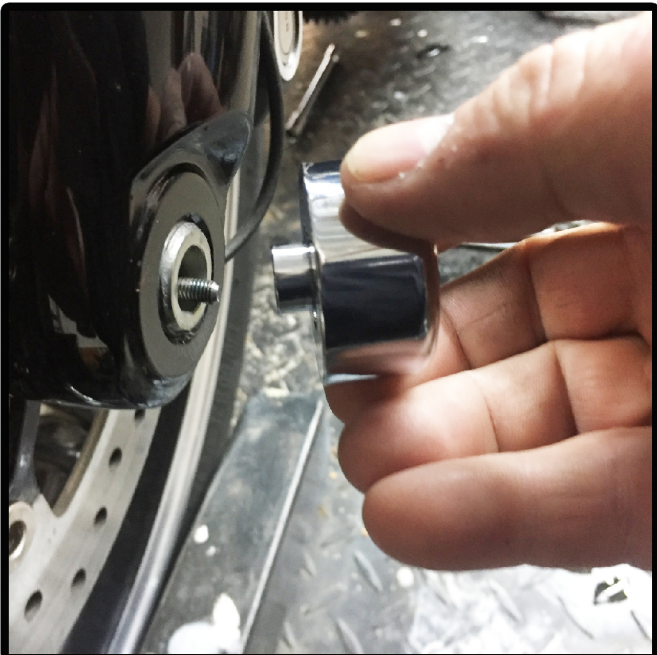
Front Axle Covers for 2018 to Present H-D[®] Softail[®]



Front Axle Mount



1. Slide threaded rod with cover, in from the right side of the bike.



2. From the left side add Blue Thread Locker to the end of the threaded Rod. Thread the Cover in to the Rod and Tighten as thight as you can by hand.

