

# HEARTLAND USA<sup>®</sup>

---

## 200 OEM Tire Fender Conversion 2000-2007 & E-Z 200 2008-Present (Instruction)



---

### HARDWARE LIST

---

#### 00-07:

**Strut hardware:**

3/8-16 x 1 s/s socket head x 4

**Fender hardware:**

3/8-16 x 1/2 s/s button head x 6

**Rockguard hardware:**

5/16-18 x 1/2 s/s button head x 4

5/16-18 x 1/2 zinc hex head w/ serrated flange x 2

**ECM hardware:**

1/4-20 x 1 1/4 s/s button head x 4

#### 08 +:

**Strut hardware:**

3/8-16 x 1 1/4 s/s socket head x 4

**Fender hardware:**

3/8-16 x 1/2 s/s button head x 6

**Rockguard hardware:**

5/16-18 x 1/2 s/s button head x 2

5/16-18 x 1/2 zinc hex head w/ serrated flange x 4

**BCM hardware:**

1/4-20 x 3/4 s/s button head x 2



2466 E. Fender Ave. Suite B Fullerton CA. 92831 Ph: 310-822-2697 Fax: 310-634-1271

[www.heartlandbiker.com](http://www.heartlandbiker.com)

We recommend reading through the entire install process before beginning.

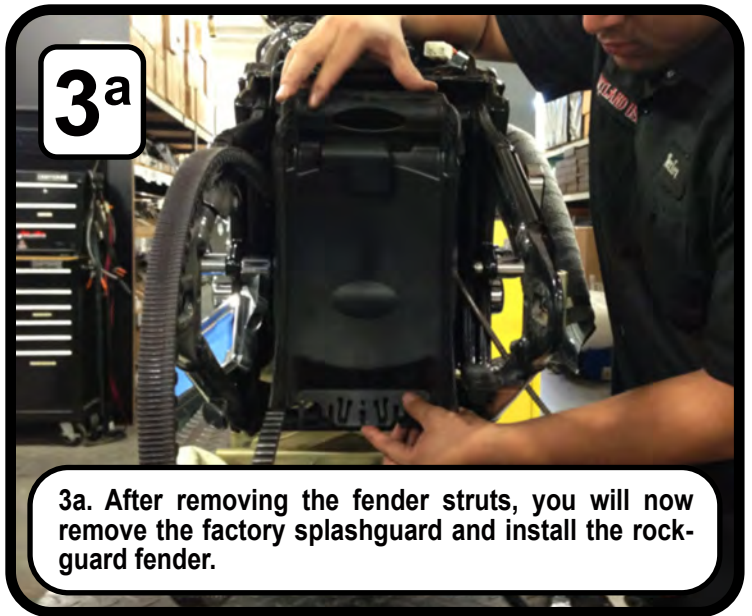
1



1. Disassemble the factory seat, strut covers and rear fender. If the factory tire is not 200mm, you will also remove the wheel.

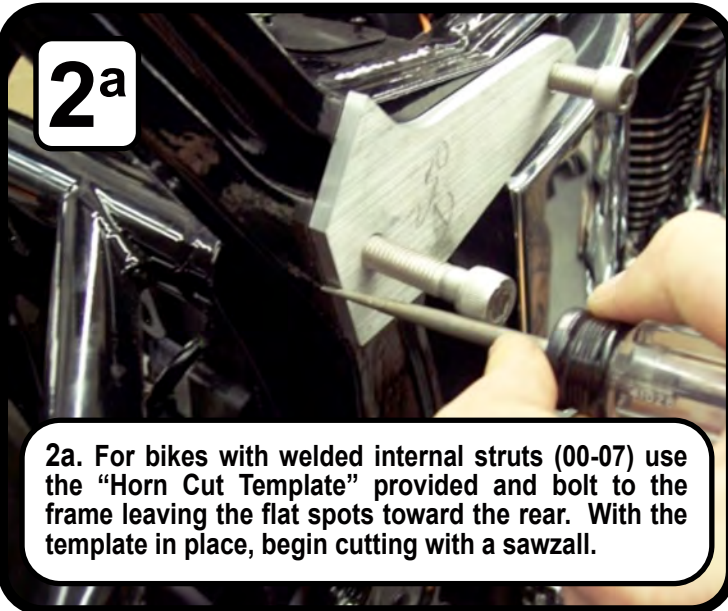
If the bike is 08+ you will now unbolt the steel fender struts.

3a



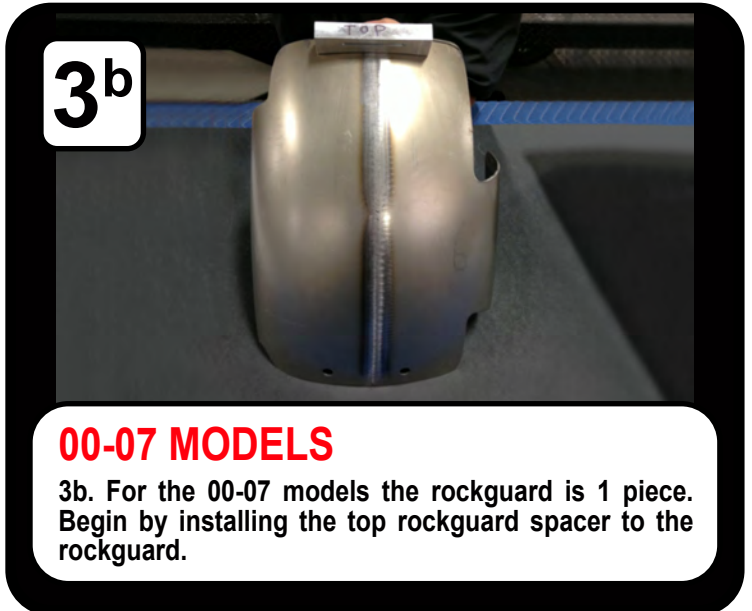
3a. After removing the fender struts, you will now remove the factory splashguard and install the rockguard fender.

2a



2a. For bikes with welded internal struts (00-07) use the "Horn Cut Template" provided and bolt to the frame leaving the flat spots toward the rear. With the template in place, begin cutting with a sawzall.

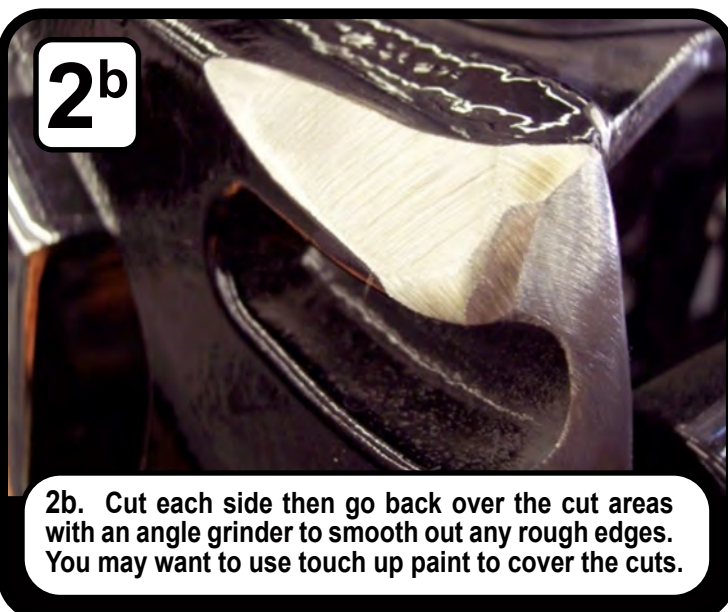
3b



### 00-07 MODELS

3b. For the 00-07 models the rockguard is 1 piece. Begin by installing the top rockguard spacer to the rockguard.

2b



2b. Cut each side then go back over the cut areas with an angle grinder to smooth out any rough edges. You may want to use touch up paint to cover the cuts.

3c



3c. Then mount the bottom rockguard spacer to the lower tabs on the swingarm.

**3d**



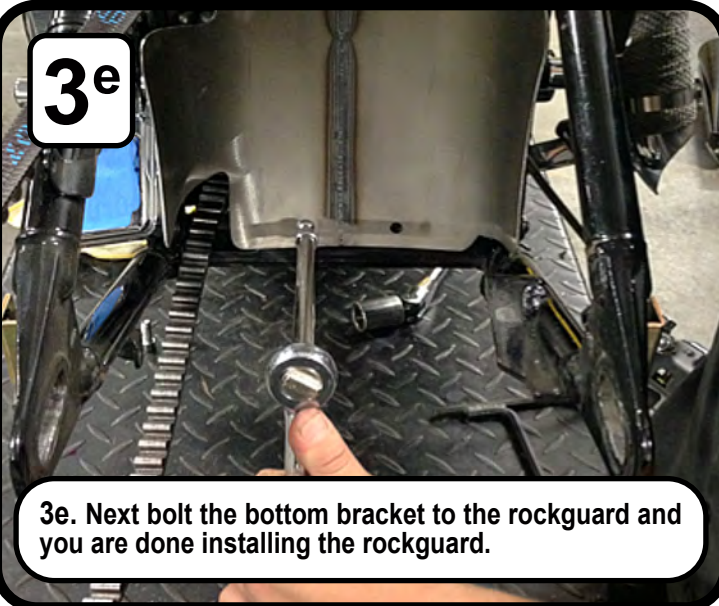
3d. Once that has been done, place the top rockguard spacer over the steel tab on the swingarm and push down to secure.

**3b**



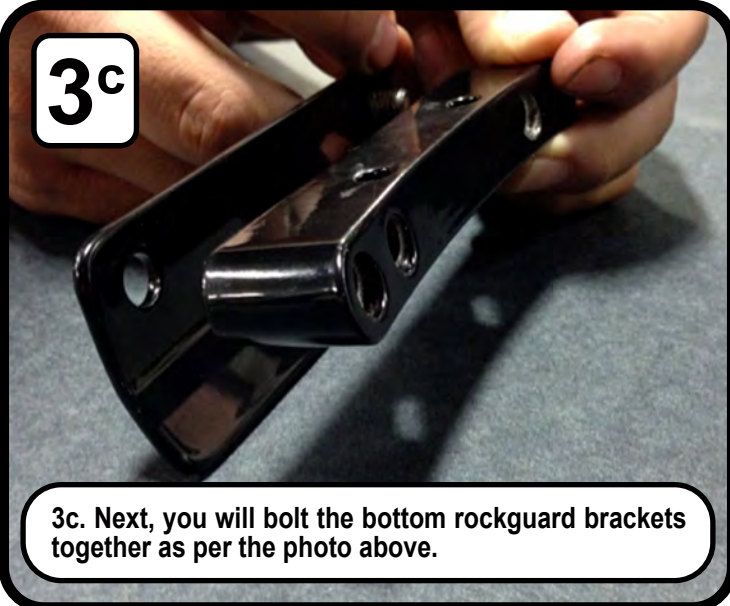
3b. Start by mounting the "J" hooks to the top of each rockguard half.

**3e**



3e. Next bolt the bottom bracket to the rockguard and you are done installing the rockguard.

**3c**



3c. Next, you will bolt the bottom rockguard brackets together as per the photo above.

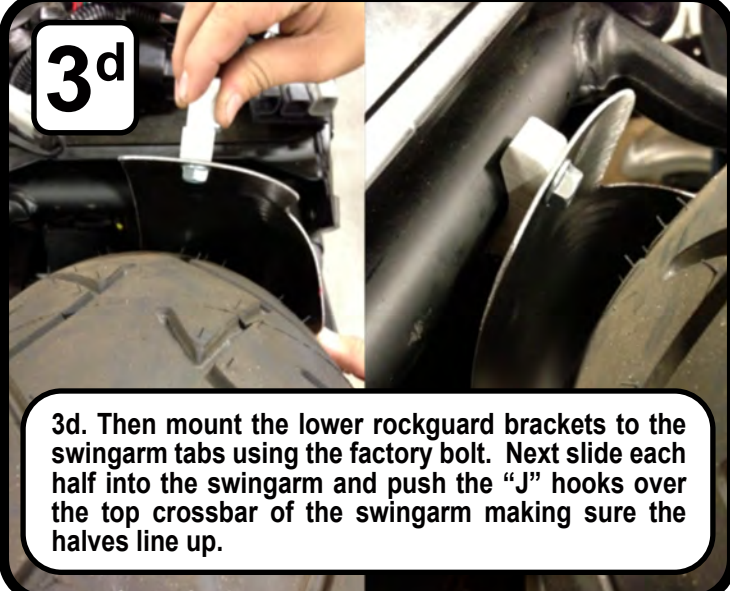
**3a**



### **08+ MODELS**

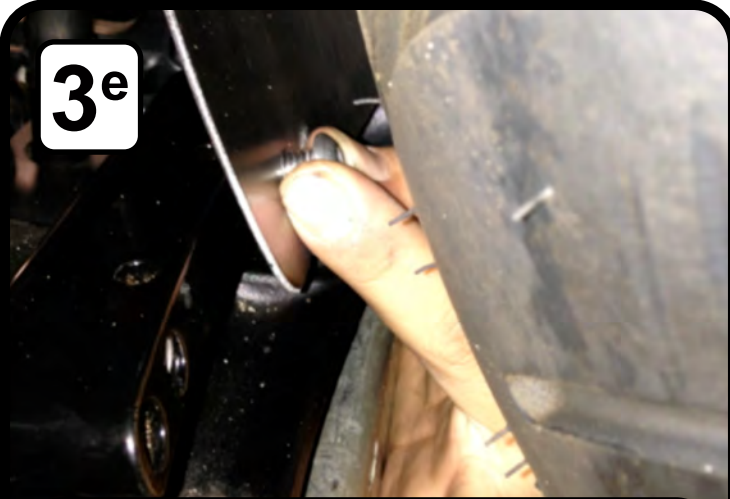
3a. For the 08+ models the rockguard is in 2 pieces for convenience when installing with a factory 200mm tire, so you do not have to remove the wheel.

**3d**



3d. Then mount the lower rockguard brackets to the swingarm tabs using the factory bolt. Next slide each half into the swingarm and push the "J" hooks over the top crossbar of the swingarm making sure the halves line up.

**3<sup>e</sup>**



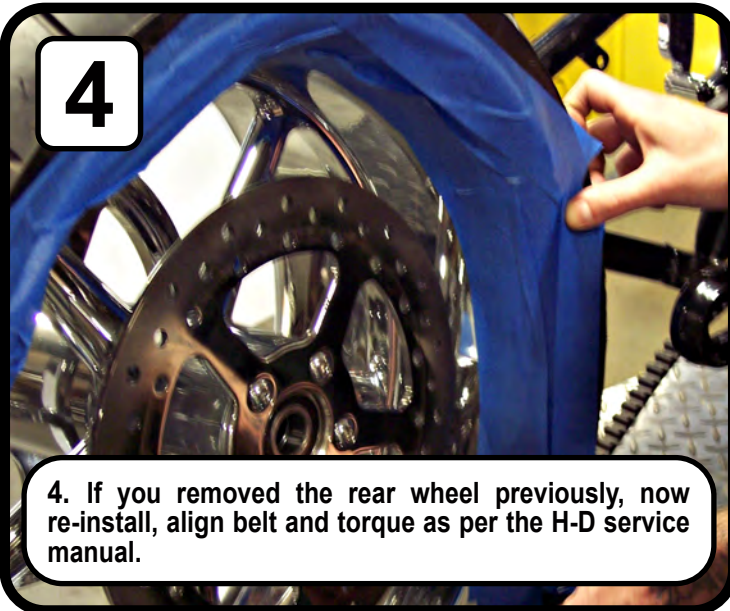
3e. Lastly, bolt the bottom rockguard brackets to the rockguard and you are done installing the rockguard.

**5<sup>b</sup>**



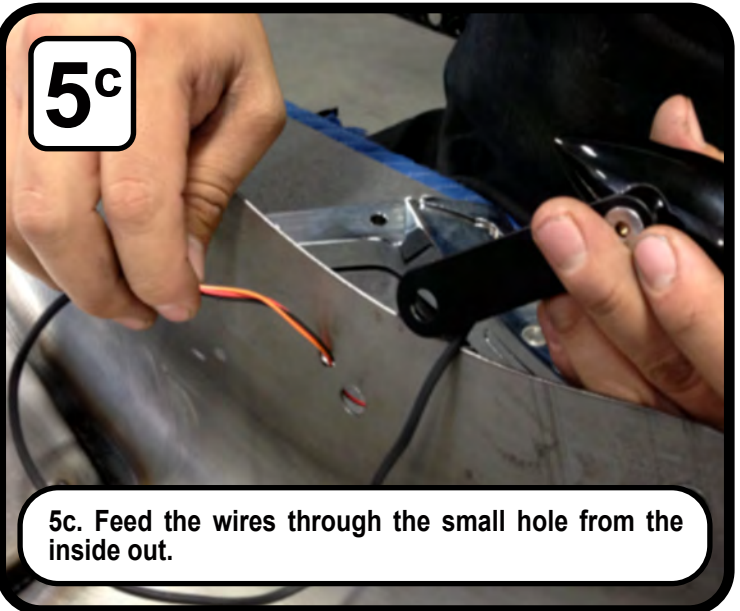
5b. First bolt the light to the light bracket. (Always test lights before installation.)

**4**



4. If you removed the rear wheel previously, now re-install, align belt and torque as per the H-D service manual.

**5<sup>c</sup>**



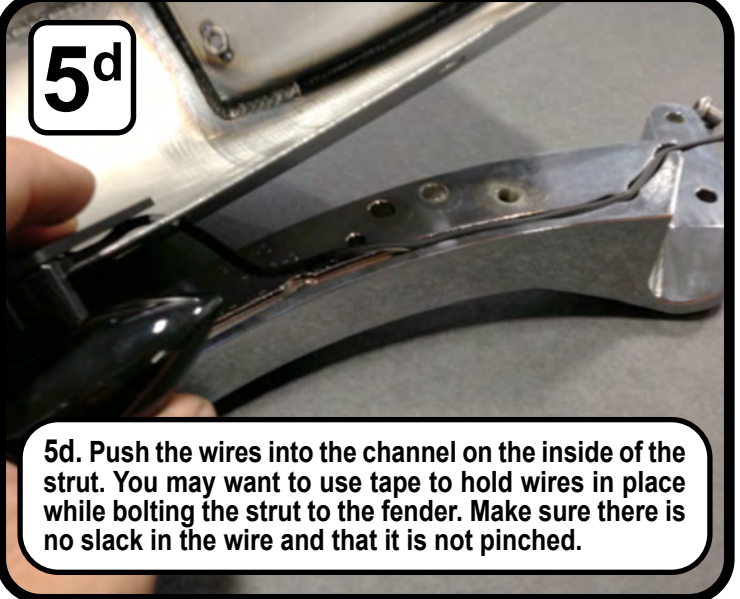
5c. Feed the wires through the small hole from the inside out.

**5<sup>a</sup>**



5a. The easiest way to assemble the fender and struts is off the bike on a table. Using a soft cloth underneath, set fender upside down and lay out the struts next to it. Bolt each strut to the fender. If you are planning to run rear turn/brake indicators, now is the time to install them. The wires for the turn signals are meant to rest inside the struts in the "wire groove" and held in place by the fender.

**5<sup>d</sup>**



5d. Push the wires into the channel on the inside of the strut. You may want to use tape to hold wires in place while bolting the strut to the fender. Make sure there is no slack in the wire and that it is not pinched.

