

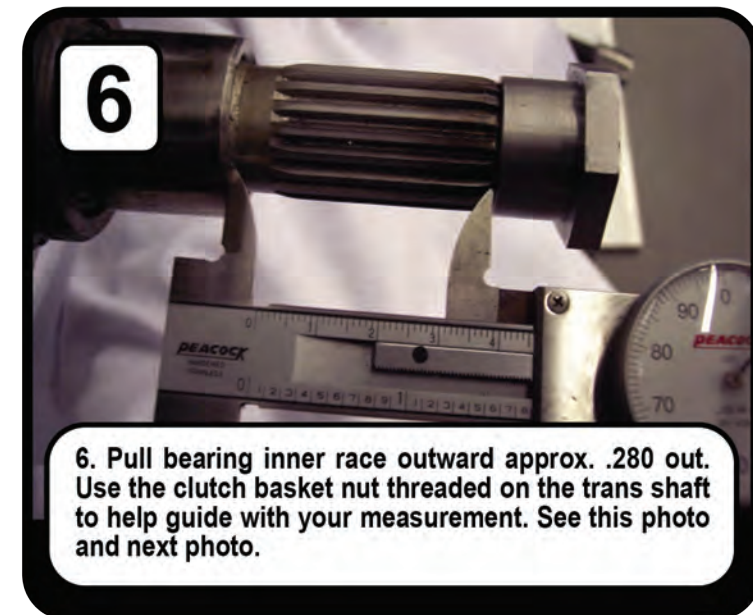
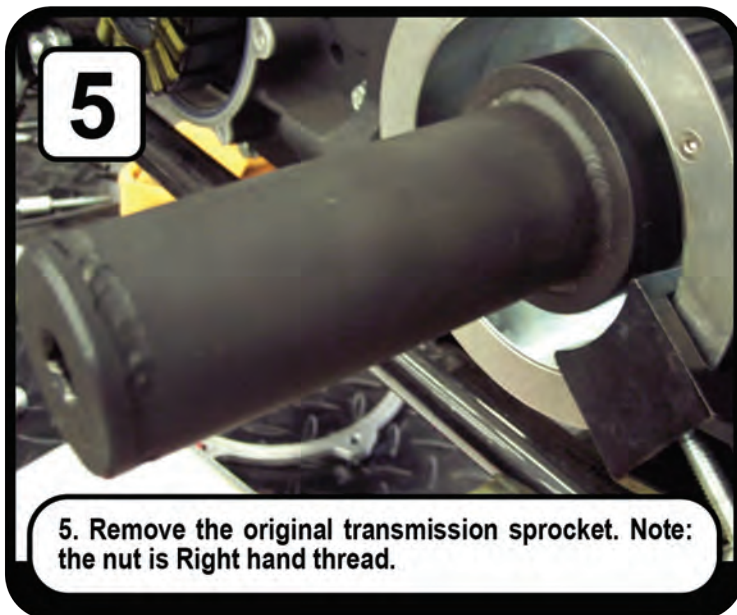
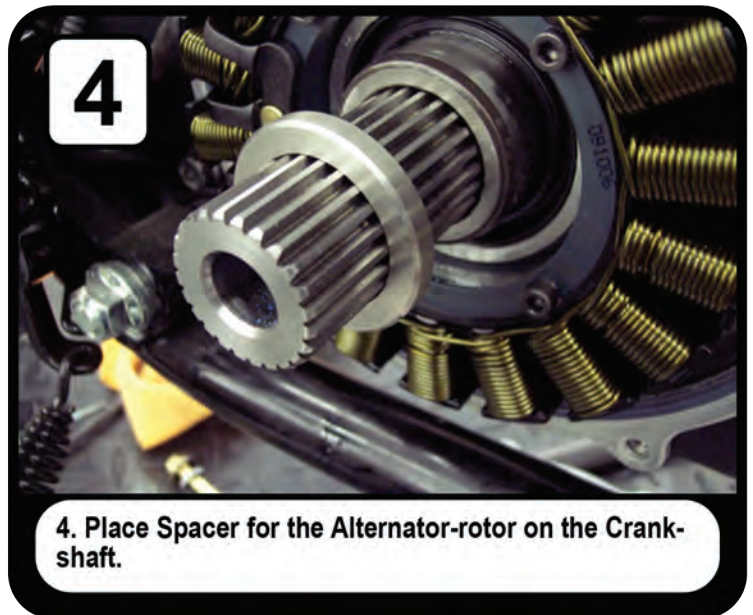
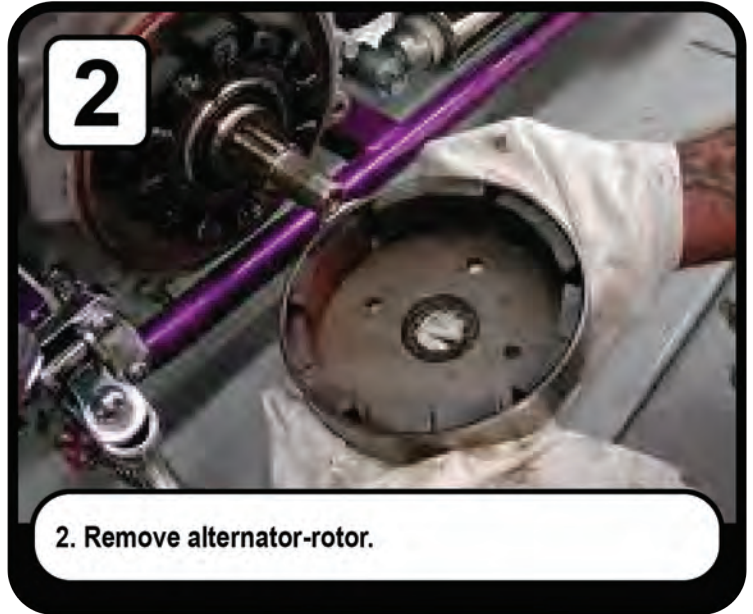
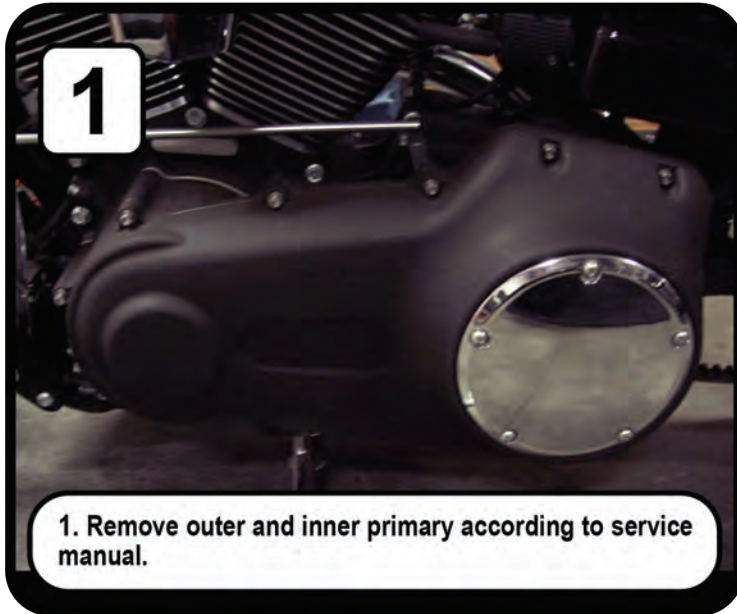
HEARTLAND USA[®]

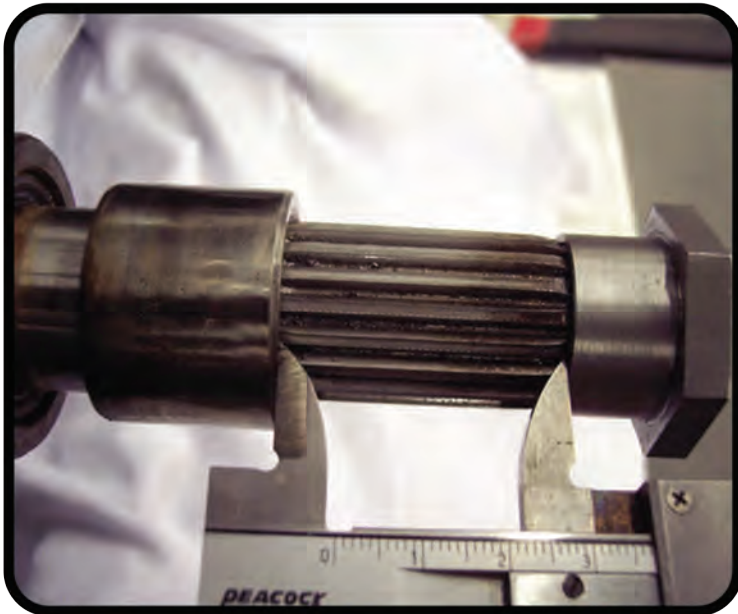
**1/4 IN PRIMARY OFFSET
HD 07- 2017 SOFTAILS & 06-17
DYNAS
(Instruction)**

USE ALL FACTORY TORQUE SPECS.



We recommend reading through the entire install process before beginning.



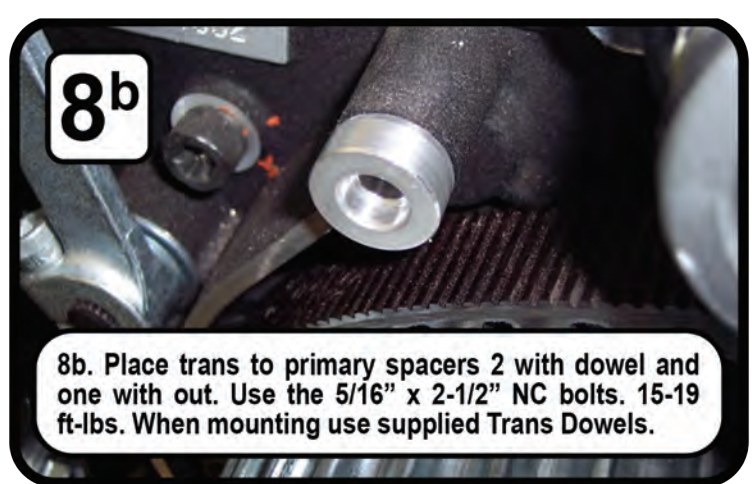


7. Install the new $\frac{1}{4}$ " transmission sprocket supplied. Install sprocket nut using initial torque of 35 ft-lbs. Then turn nut another 30 to 45 degrees, DO NOT exceed 45 degrees! Reuse and install stock OEM lock plate as per service manual.

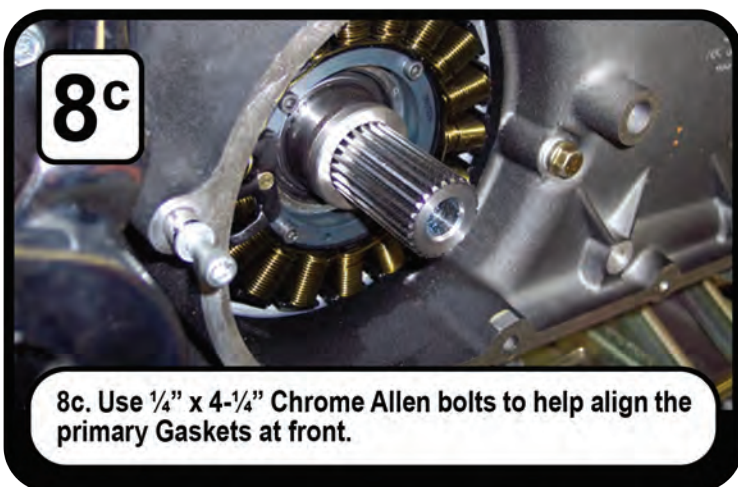
Install drive belt before inner primary.



8a. Install primary: use supplied spacer ring and place between OEM primary gasket that came with bike and supplied OEM gasket.



8b. Place trans to primary spacers 2 with dowel and one with out. Use the $\frac{5}{16}$ " x 2- $\frac{1}{2}$ " NC bolts. 15-19 ft-lbs. When mounting use supplied Trans Dowels.



8c. Use $\frac{1}{4}$ " x 4- $\frac{1}{4}$ " Chrome Allen bolts to help align the primary Gaskets at front.



9. Slip small dark steel spacer over threads of transmission main shaft.

Clutch hub will go on next over the small dark Spacer.

10. Reassemble clutch and primary chain / according to service manual.

11. Use RED threadlocker on crank bolt. ($\frac{9}{16}$ " x 3- $\frac{1}{4}$ ") and 70-80 ft-lbs on clutch hub nut.

12. Mount outer primary cover according to service manual and original torque sequence, using the supplied chrome bolts. Torque to 108-120 in-lbs. Add fluid. Adjust clutch hub and cable as per HD manual before operating bike.