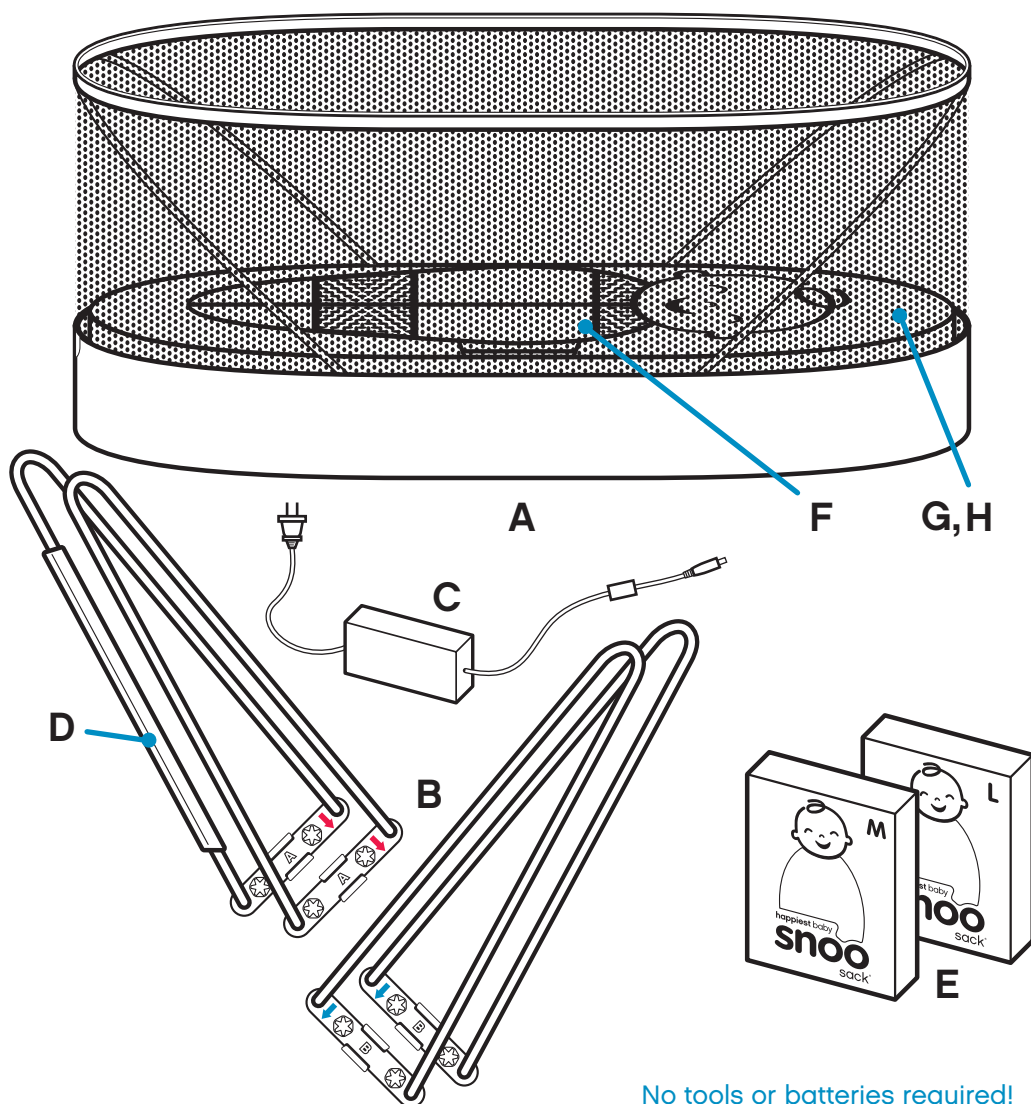


happiest baby
snoo
 smart sleeper™

UNPACK SNOO

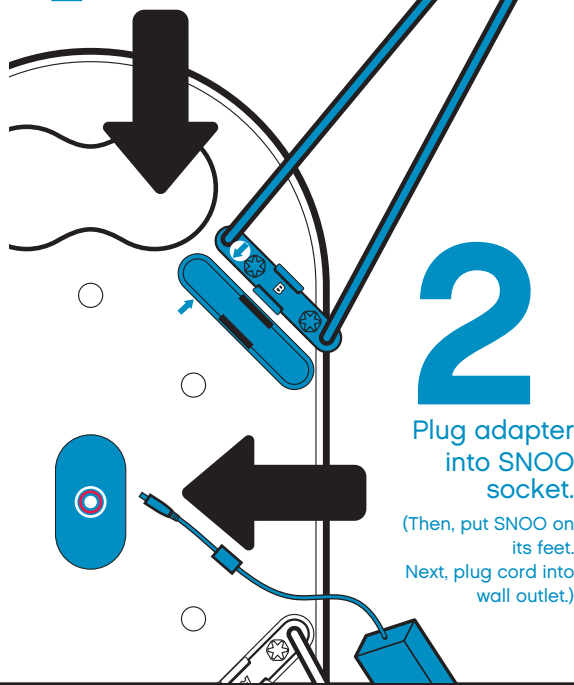
- A. SNOO Bed
- B. Legs (4)
- C. Power Adapter
- D. Power Cable Holder (attached to leg)
- E. SNOO Sack (1 Medium & 1 Large)
- F. SNOO Sack (1 Small) (attached to safety clips)
- G. Mattress
- H. Fitted Sheet (attached to mattress)

QUICK START



No tools or batteries required!

1 Match up the arrows.
Snap in each leg.
Hand tighten all bolts.

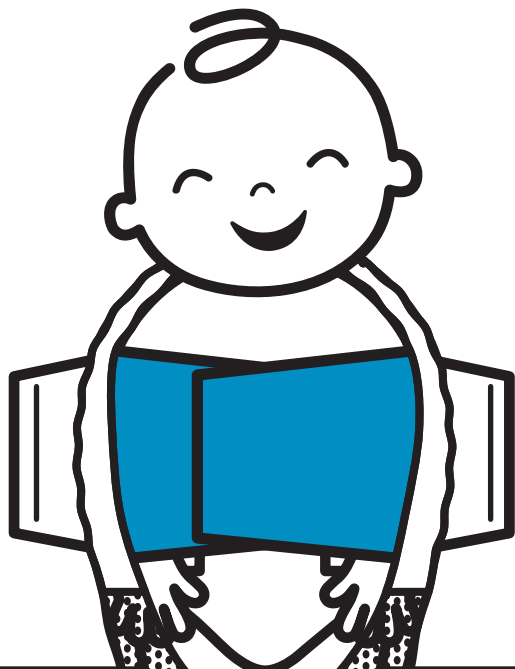


2

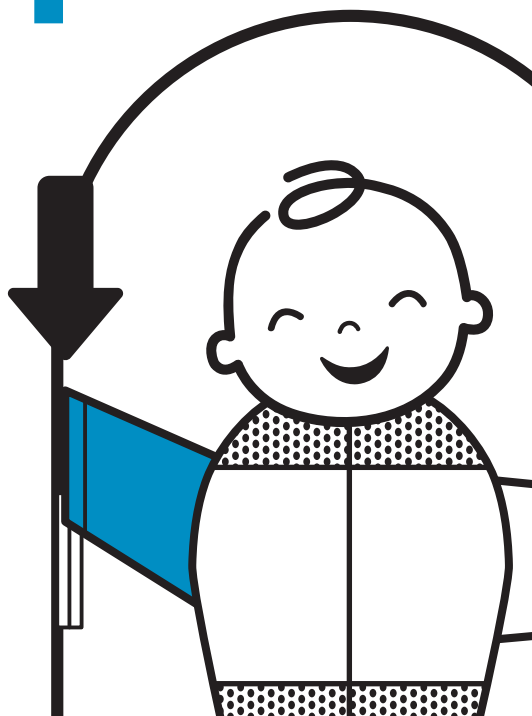
Plug adapter
into SNOO
socket.

(Then, put SNOO on
its feet.
Next, plug cord into
wall outlet.)

3 Slide small sack off clips inside
SNOO. Place baby in best sized
sack (S, M or L). Snug bands
(right over tops of hands).
Zip up all the way...always!



4 Slide wing loops
onto safety clips.
Note: SNOO won't work if wing
loops are not attached to clips.



5 Once the button has stopped
flashing, SNOO is ready.
Now, push the button and
SNOO does the rest!



Allow 3-5 nights for Snoo's
sound / motion to improve your baby's sleep.

Download SNOO app to customize SNOO to your baby!



Google Play™ and the Google Play logo are
trademarks of Google Inc.