

WATTSHOP
The Relentless Pursuit of Speed

**ANEMOI
INLINE
POLE CLAMPS**

WATTSHOP

The Relentless Pursuit of Speed

Anemoi Inline Pole Clamps

Thank you for purchasing a WattShop #Anemoi inline pole clamps. We hope they serve you well in achieving maximum performance in all of your races! Please share your pictures and results on Facebook, Twitter and Instagram using #WattShop.

WATTS IN THE BOX

No	Part Description	Quantity	Torque
1	Pole clamps (LH and RH)	1 (pair)	-
2	M5x22mm low cap head bolt	2	5Nm
3	M5x30mm low cap head bolt	2	5Nm
4	M5x25mm countersunk head bolt	4	5Nm

OPTIONAL

5	Minimoi extension poles	1 (pair)	-
6	Armrests	1 (pair)	-
7	Adjustable riser (inc all hardware)	1 (pair)	-

NOTES

You will need to remove the existing M5x18mm and M5x25mm cap head bolts that come with the adjustable riser.

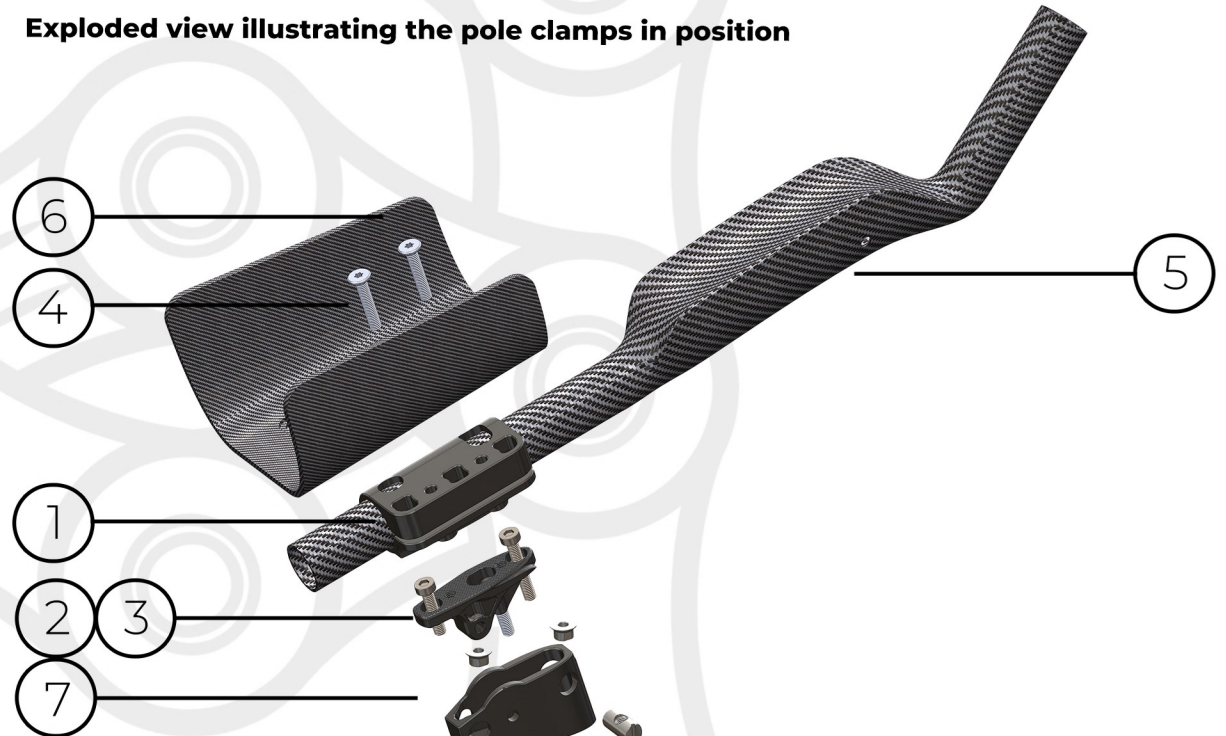
TOOLS REQUIRED

T25 Torx key
Torque wrench

NOTES

See the adjustable riser installation guide for the list of tools needed for the risers.

Exploded view illustrating the pole clamps in position



WattShop Anemoi inline pole clamps are specifically for use in combination with our adjustable riser. The align the pole clamp inline with your riser stacks. In doing so please note the pole clamp adds 30mm to your stack height.

The pole clamps allow for +/- 5 degrees of toe in/out enabling you to achieve a narrower hand position. They are also handed so the armrest mounting can be positioned either inboard or outboard, this allows for a degree of flexibility with armrest width.

Paired with our adjustable angled risers they allow you to angle both your armrests and extension poles.



WATTSHOP

The Relentless Pursuit of Speed

INSTALLATION GUIDE

1. Remove your armrests and the existing OEM extension clamp blocks. Your Anemoi adjustable riser (part 7) should be mounted to the top of your riser stacks.

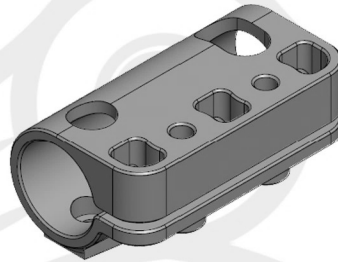
For how to install the adjustable riser see the adjustable riser install guide.

The top of the adjustable riser should be visible ready to accept the pole clamps (part 1).

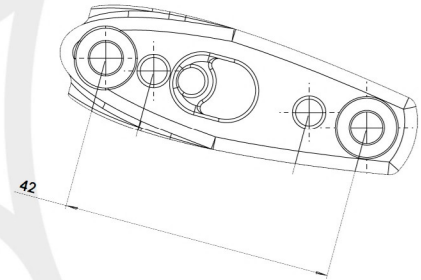
With the upper riser visible remove the M5x18mm and M5x25mm cap head bolts if you have already installed these as part of the riser installation.

2. Make the determination as to whether you will be mounting the pole clamps with the armrest mounting holes inboard or outboard of the riser stack.

This will affect armrest width options.

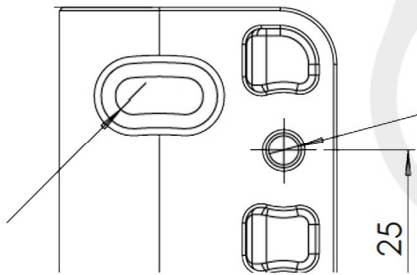


3. Position the pole clamps on top of the adjustable riser, locate the M5x22mm low cap head into the rear holes (part 2) and the M5x30mm low cap head into the front holes (part 3).

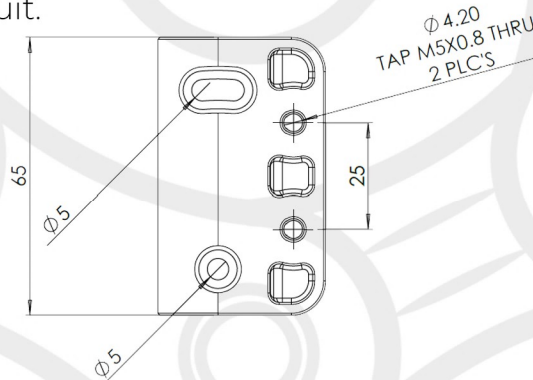


4. Set your toe in position and **torque to 5Nm**.

Note, you will need to torque the front bolts first and then the rear bolt. This ensures the angle is correctly set.



5. The inline pole clamps utilise 25mm bolt centres so if using OEM armrests you will need to ensure your armrests offer this bolt spacing. If using WattShop armrests they can be drilled to suit.



6. Position your armrests as desired, locate the M5x25mm countersunk head bolts (part 4) into the pole clamp, insert your extension poles and **torque to 5Nm**.

If you are using OEM armrests you may need to use different bolts if the supplied countersunk head bolts are not suitable.