

# WATTSHOP

## Anemoi Basebar

### THE RELENTLESS PURSUIT OF SPEED

Thank you for purchasing the WattShop #Anemoi basebar. We hope it serves you well in achieving maximum performance in all of your races! Please share and tag us in your pictures and results on Facebook, Twitter and Instagram using #WattShop or @WattShop.





#### WATTS IN THE BOX

1. 1x pair of carbon wings
2. 1x front stem
3. 1x rear stem
4. 1x steerer cap
5. 1x rear stem cover cap
6. 1x set of stem spacers (2x 10mm, 1x 5mm both upper and lower parts)
7. 1x set of riser stack spacers (20x 5mm spacers)
8. 2x M5x20mm cap head bolts (steerer clamp)
9. 4x M5 anti-vibration washers (steerer clamp & rear axle clamp bolts)
10. 2x M4x10mm low cap head bolts (rear stem cover cap)
11. 1x M6x30mm countersunk head bolts (steerer pre-load bolt)
12. 2x M5x35mm cap head bolts (rear axle clamp bolts)
13. 1x M6x55mm cap head bolt (central axle preload bolt)
14. 1x M6 anti-vibration washer (central axle preload)
15. 2x M5x16mm grubscrew (carbon wing failsafe)
16. 2x M5x12mm countersunk head head bolts (wing to front stem)
17. 1x LH front stem cap
18. 1x set of countersunk head riser stack spacer bolts (2x of each size in 5mm increments from 30mm through to 85mm)

The WattShop Anemoi basebar offers a range of adjustability as well as interchangeable components. Our innovative stem reach adjustment feature allows for complete internal cable routing with no requirement to re-cable when an adjustment is made.

Interchangeable components can be purchased separately via our website.

*Please note if you have a custom mounting you may receive slightly different components to those listed above but this will be explained prior to shipping.*

 @Watt\_Shop  @WattShop  /shopforwatts  info@shopforwatts.co.uk

[www.shopforwatts.co.uk](http://www.shopforwatts.co.uk)



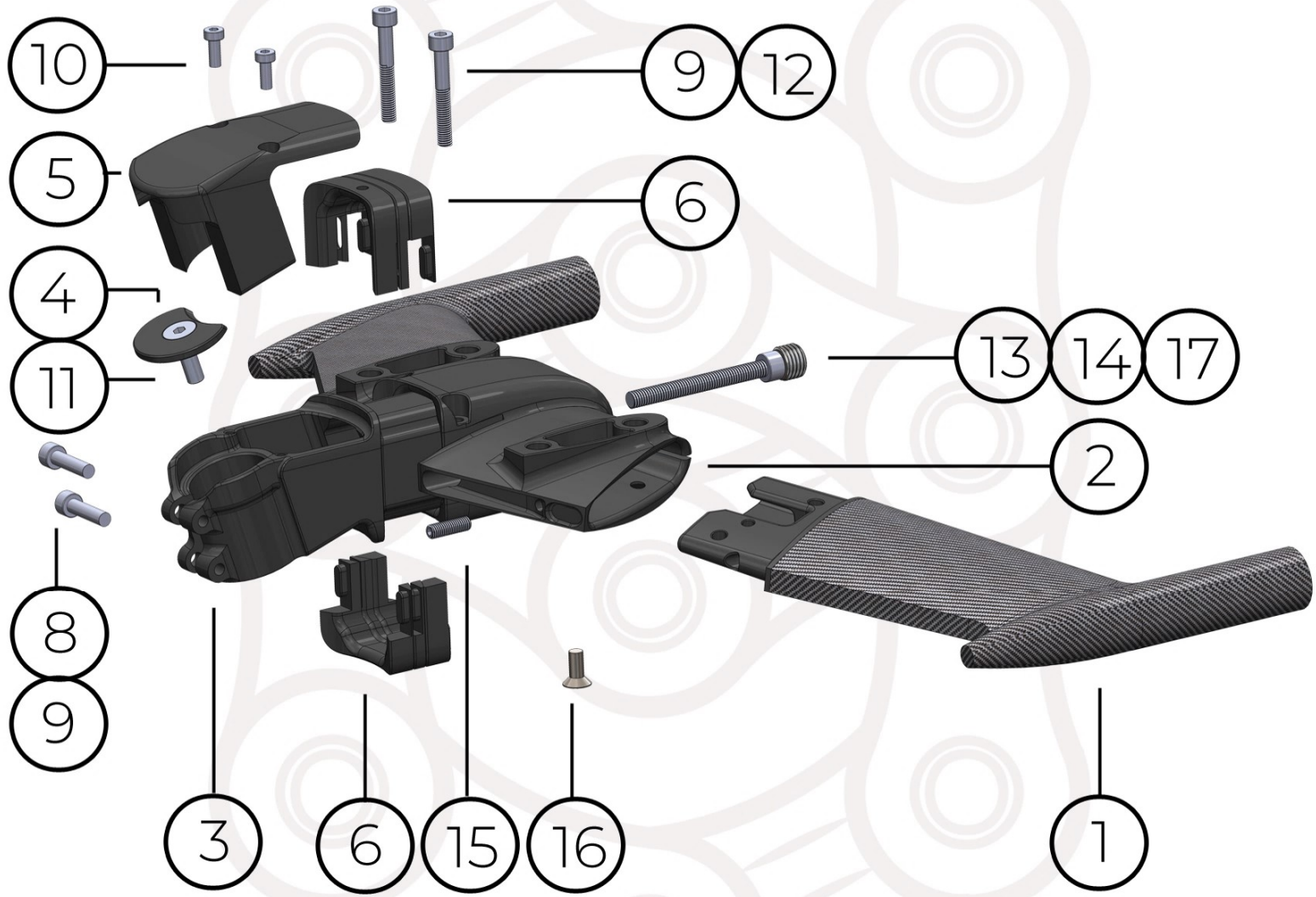


# WATTSHOP

## Anemoi Basebar

THE RELENTLESS PURSUIT OF SPEED

### EXPLODED VIEW



 @Watt\_Shop  @WattShop  /shopforwatts  info@shopforwatts.co.uk

[www.shopforwatts.co.uk](http://www.shopforwatts.co.uk)





# WATTSHOP

## Anemoi Basebar

**THE RELENTLESS PURSUIT OF SPEED**

### INSTALLATION

PLEASE NOTE TORQUE TO 5nm UNLESS OTHERWISE STATED & USE LOCTITE

1. Lay all components and hardware out on a table.

2. With your previous basebar removed, fit the rear stem to your steerer and insert the M5x20mm cap head bolts + M5 anti-vibration washers but do not torque the bolts at this stage. Similarly, position the steerer cap and M6x30mm preload bolt.

3. Ascertain your cable routing path. You will need to decide whether the cable needs to be routed through the front stem and into the rear stem OR whether it will exit through the underside slot of the front stem OR via the exit holes on the trailing edge either side of the front stem.

4.. Route the cables through the wing and the front stem in the route identified in step 3. In the process of routing the cables, interlock the two parts. Once interlocked, first insert the M5 grub screw into the trailing edge (torque to 2Nm) and then the central M5x12mm countersunk bolt. Repeat for the opposite wing.

5. Align the front stem with the rear stem axle and route the cable through if required. Slide the front stem over the axle , bolt from the front with the M6x55mm cap head bolt + M6 anti-vibration washer and the top with the 2x M5x35mm cap head bolts + anti-vibration washers to hold in place. Clip the required number of stem spacers in place. Torque the three bolts. Note the front central should be torqued to 10Nm.

6. Complete the routing of your cables before tightening the steerer preload bolt and torquing the steerer clamp bolts.

7. Position the rear stem cover cap and mount with the 2x M4x10mm cap head bolts. Torque to 2Nm.

*Continued over page...*



@Watt\_Shop



@WattShop



/shopforwatts



info@shopforwatts.co.uk

[www.shopforwatts.co.uk](http://www.shopforwatts.co.uk)





# WATTSHOP

## Anemoi Basebar

THE RELENTLESS PURSUIT OF SPEED

### INSTALLATION...continued

PLEASE NOTE TORQUE TO 5nm UNLESS OTHERWISE STATED & USE LOCTITE

8. Determine the number of riser stack spacers required, these can be aligned and interlocked with the bolthole boss face down. Select the relevant length bolt install from the underside. Please note the front bolt will be 5mm longer than the rear bolt. Always ensure the hex head is fully engaged to avoid rounding the bolt head. You will be bolting into an M5 barrel nut inside the adjustable riser/mount plate.

9. To continue the installation from here please see the installation guide for the adjustable riser and/or the Anemoi aero extension guide. Please note if installing the Anemoi extension system you will be installing the adjustable riser directly to the top of the riser stack, the mount plates are not necessarily required. Image below for reference.



 @Watt\_Shop  @WattShop  /shopforwatts  info@shopforwatts.co.uk

[www.shopforwatts.co.uk](http://www.shopforwatts.co.uk)

