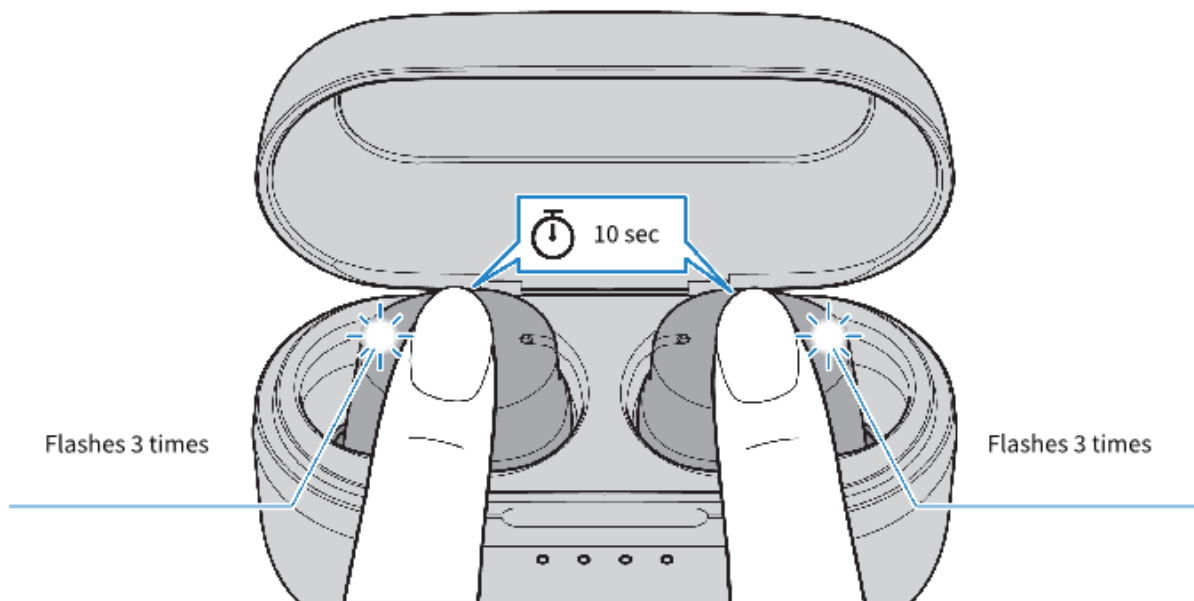


Initializing (performing a factory reset)

This will restore all of the earbud settings to their factory defaults. The information for devices registered (paired) will be deleted.

1. Put the earbuds back into the charging case; and within 20 seconds of doing so, long-tap the Touch Control on earbuds (L) and (R) for 10 seconds, without taking them out of the charging case.
- Make sure that the indicator lights up as shown below.



- The earbuds are now initialized (factory reset).