

YH-E700A



YH-E700A



Type

Headphone Type	Over-Ear
Folding / Swivel	✓ / ✓
Driver	Dynamic / ø40

Battery

Charge Time	about 3.5H
Usage Time	max 35H (Advanced ANC ON)

Accessories

USB Power Cable	USB A-C (0.3m)
Carrying Case	✓ (Hard type)
Audio Cable	3.5mm to 3.5mm
Flight Adapter	✓

Features

Frequency Response	8Hz - 40kHz
Line Input	✓ (3.5mm stereo mini, Power ON : ANC/Ambient Sound Enable, Power OFF : Driver Direct)
Hi-Res	✓ (w/ wired connection)
Weight	325g
Mic	✓
Bluetooth (Version, codec)	Bluetooth® V5.0, SBC/AAC/Qualcomm® aptX™ Adaptive
Voice Control	Siri® / Google Assistant
Listening Care	✓ (Original)
Advanced ANC	✓ (Original)
Ambient Sound	✓
Listening Optimizer	✓ (Original)
Yamaha Headphones Controller App	✓



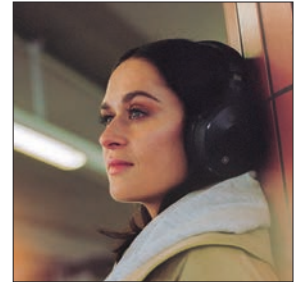
Black

HEADPHONES THAT ADAPT TO YOU AND YOUR ENVIRONMENT

With our unique and proprietary technology, we've created the only headphones and earphones that truly adapt to you and your environment.

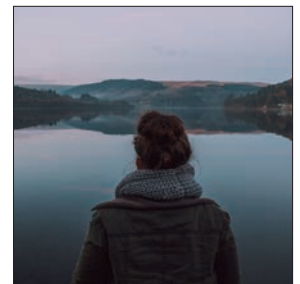
OPTIMIZED FOR MY EXPERIENCE - LISTENING OPTIMIZER

Internal microphones constantly measure your ear canal and listening condition, ensuring pure reference sound for the ultimate listening outcome. Yamaha's Listening Optimizer utilizes an in-ear microphone to measure the seal and air leakage from different shaped ears every 20 seconds. Playback is optimized in real-time to correct the difference between the source and the actual listening condition, delivering a sound customized to the individual listener.



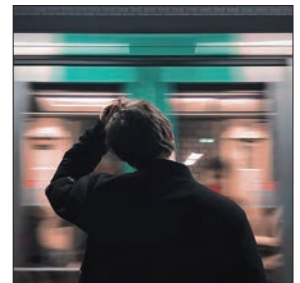
CUT THE NOISE, NOT MY MUSIC - ADVANCED ACTIVE NOISE CANCELLING

Yamaha's unique noise cancellation technology never interferes with the sound source, eliminating only the noise and expressing the purist sound signal. In-ear microphones listen to the combined signals of music and noise, separating the signal processing of background noise and music. It achieves this by isolating the two from each other in a new, unique algorithm. The signal collected by the inner microphone analyzes the noise, calculating what should be removed from the playback music signal so that only noise is erased. This means there is no unnecessary processing of the music signal, preserving the purity of the music.



GET CLOSER, NOT LOUDER - LISTENING CARE - Advanced

Listening Care aims to optimize the volume balance based on a static (unchanging) volume setting on your device. The YH-E700A takes a real-time, adaptive approach that uses the data for the past 5 seconds, calculating the average volume level every 0.7ms. The correction applied across a 4-band EQ is adaptive according to the average volume level. Optimization is therefore realized with significantly higher accuracy, relative to the content volume on an ongoing basis. Further, in order to obtain a more natural effect, the correction parameters are applied slowly over time. Your listening experience is customized to the music and your surroundings meaning a completely individualized sound, just for you.



YH-E700A



YH-E500A

	YH-E700A	YH-E500A
Listening Care	✓	✓
Ambient Sound	✓	✓
Active Noise Cancelling	✓ (ADVANCED)	✓ (Feedforward)
Listening Optimizer	✓	—
Headphones Controller App	✓	✓
Call Function	✓	✓
Voice Assistance (Siri®/Google Assistant)	✓	✓
Continuous Playback Time	Approx. 35h (ADVANCED ANC=ON)	Approx. 38h (ANC=ON)

The Bluetooth® word mark and logos are registered trademarks owned by Bluetooth SIG, Inc. and any use of such marks by Yamaha Corporation is under license. Other trademarks and trade names are those of their respective owners. Qualcomm aptX is a product of Qualcomm Technologies, Inc. and/or its subsidiaries. Qualcomm is a trademark of Qualcomm Incorporated, registered in the United States and other countries. aptX is a trademark of Qualcomm Technologies International, Ltd., registered in the United States and other countries.