



5000SE

# YH-5000SE

## HEADPHONES

### Specifications

Headphone Type	Over-Ear
Housing	Open-back
Driver	ORTHODYNAMIC™ (Planar magnetic)
Frequency Response	5 Hz - 70 kHz
Weight	320 g
Impedance	34 Ω (at 1kHz)
Accessories	<ul style="list-style-type: none"><li>• Unbalanced cable: 3.5mm 3-pole plug (with 6.3mm screw-on adaptor)</li><li>• Balanced cable: 4.4mm 5-pole plug,</li><li>• Leather earpads: Sheep skin leather / PU leather,</li><li>• Suede earpads: Toray Ultrasuede®,</li><li>• Headphone stand: W118 x H283 x L146, Weight: Approx. 980 g, Material: Aluminum alloy / Copper alloy</li></ul>

\* The name Ultrasuede® is a registered trademark of Toray Industries, Inc.



## SOUND IS ALL ABOUT BEING TRUE

Our flagship YH-5000SE headphones combine advanced technologies to create a sound of tremendous quality. This is the very essence of Yamaha's aspirations, to pursue a sound that is always true and so, we've also brought the finest materials, exemplified by our unique and historic ORTHODYNAMIC™ driver which has undergone even further evolution over time. For those seeking the absolute pinnacle of True Sound in headphones, the solution is here.



---

## TRUE SOUND

---

Yamaha's achievements and broad expertise as a brand are unparalleled in the world. We are extensively involved with all-things music—from the moment the artist creates a sound to the moment it reaches the listener's ears—and we are intimately aware of even the thoughts that artists put into their music. From the detailed breathy vocals and subtle performance nuances of the artists, the energetic dynamism without the slightest bit of distortion, and the spatial expression that fully conveys the enthusiasm of a packed concert venue, we deliver a musical experience that makes you feel as if you can reach out and touch the artist.



---

## TONAL BALANCE

---

The ORTHODYNAMIC™ drivers and large-capacity housings provide authentic sound with faithful reproduction over the entire sonic spectrum. This includes all musical instruments and vocals, at any pitch, without altering the tonal quality. Harmonies stand out with clarity, allowing you to enjoy nuances in the music you've never heard before.

### FULL-FLEDGED PURSUIT OF SONIC ACCURACY. YAMAHA'S UNIQUE ORTHODYNAMIC™ DRIVER.

Yamaha's original ORTHODYNAMIC™ headphones captivated audiophiles in the 1970s, beginning with the famed HP-1. Taking advantage of the latest technology, we've redesigned this driver, which encompasses a thin film diaphragm with metal coil patterning. To minimize any degradation in sound quality, we've implemented various innovative measures. These include eliminating the fixed central structure of conventional headphones, ensuring shape retention by use of concentric circle corrugation and pattern reinforcement, and avoiding magnetic substances in the vicinity. All of these enable an authentic sound that is easy on the ears and yet ultra-responsive.



### DELICATE, SMOOTH EXPRESSIVENESS. FULL-FREQUENCY RANGE FROM LARGE HOUSING.

The large housing that comfortably envelops the ear has ample internal acoustic volume. It features an open-back design for creating ideal airflow, thereby reducing adverse effects on the thin film diaphragm, and preventing sound reflections inside the rear cavity. This helps with eliminating undesirable resonance. Moreover, we've adopted a newly developed Japanese-made rolled plain Dutch weave stainless steel filter to control internal pressure in the housing, with an arch-shaped protrusion arranged inside the housing which functions as a reflector. These features allowed us to achieve exceptionally realistic reproduction of both instrumental and vocal sounds, and properly control those sounds throughout their initial attack and final decay.




---

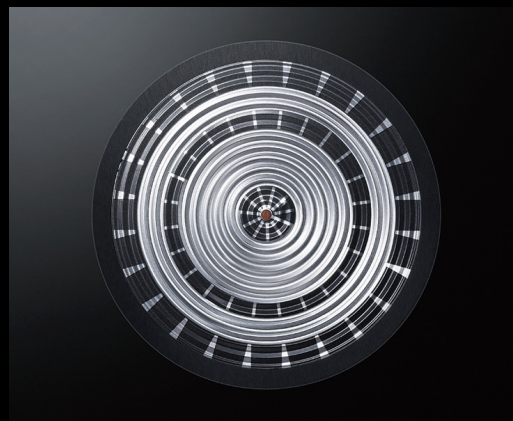
## DYNAMICS

---

Not content to merely produce powerful sound, we pursue an expressive contrast between stillness and motion—achieving low-frequency expression with rich volume and extraordinary transparency. The result is that the full dynamism of the sound is artistically conveyed and engulfs the listener inside an amazing musical world.

### FAITHFULLY RECREATING MUSICAL DYNAMICS. ULTRA-LIGHTWEIGHT, THIN-FILM DIAPHRAGM.

The specially developed thin-film diaphragm is the culmination of repeated numerous prototypes, meticulous measurements, and rigorous analysis. It is manufactured by etching the voice coil with a unique pattern on both sides of the film and applying minute corrugation. This results in significant weight reduction from a conventional dynamic driver, providing outstanding responsiveness that fully brings out the subtle nuances and delicate ambiance in the music. Moreover, micro-perforation air dampers with high permeability arranged on both sides ensure that the diaphragm motion can be appropriately contained, allowing accurately controlled reproduction without degrading the vibrant dynamism of the music. In addition, the rounded shape devoid of any fixed points other than the outer circumference maintains uninhibited movement of the entire film and enables exceptionally full, yet clear low-frequency expression.

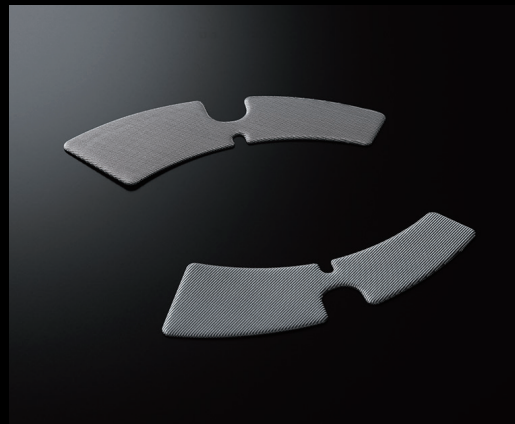


## SOUND IMAGE

In addition to accurately reproducing the enormous ambience of a huge concert hall and the intimate warmth unique to a small club, YH-5000SE delivers amazing realism and expressive nuance that lets you feel the artist's position and even the most delicate movements. The result is an extraordinarily immersive feeling, as if you were experiencing the artist perform right in front of you.

### SONICALLY DENSE, YET TRANSPARENT. JAPANESE-MADE ROLLED PLAIN DUTCH WEAVE STAINLESS STEEL FILTER.

In order to regulate and maintain optimum pressure inside the housings, we've employed a rolled plain Dutch weave stainless steel filter of Japanese manufacture. Produced under strict air permeability control, this filter enables smooth air discharge and is the key element in creating the sound field expression we aspired to for the YH-5000SE. As a result, it achieves both a remarkable level of density and openness at the moment when the sound rises.



### PROFOUND IMMERSION IN THE MUSIC. TWO TYPES OF EARPADS INCLUDED.

In order that listeners can deeply immerse themselves in the sound, a comfortable fit is absolutely essential, especially when listening for a long period of time. To help users do so, we've included two different types of earpads with the YH-5000SE. A leather version has sheepskin positioned at the front of skin contact, offering moderate moisture absorption and odor protection. By combining highly flexible perforated synthetic leather on the outer periphery with well-ventilated mesh on the inner circumference, it also achieves both a finely contoured sound image and a clear sound field. The suede version, on the other hand, utilizes Toray Ultrasuede®, a luxurious yet highly functional non-woven material with a suede texture, for its use not only in fashion and interior design, but also for automotive and airplane upholstery, sports gear, and cases and accessories for smartphones and mobile devices. It allows you to enjoy an even longer immersive experience—providing a supple enveloping fit, as well as superbly soft, warm sound.

\* The name Ultrasuede® is a registered trademark of Toray Industries, Inc.



### SONIC PURITY AND EXPANSIVENESS. BRAIDED SILVER-COATED OFC CABLES.

The YH-5000SE features detachable high-quality cables for giving true audiophiles flexibility. Moreover, two types of cables are included for both balanced and unbalanced connections: a specially designed 3.5 mm, 3-pole plug cable and a 4.4 mm five-pole plug balanced cable. The core of the cable is comprised of silver-coated OFC cable, resulting in clear mid- and high-frequencies and expressive lows. Through precise braiding, any parallel alignment of independent signals is avoided so that all audio is transmitted with the highest purity, enabling remarkably accurate sonic and spatial expansiveness.



## THE COMFORT IN BECOMING ONE WITH THE MUSIC

Immerse yourself more deeply in your own world of sound and music. We've crafted a lightweight set of headphones that makes you forget you're even wearing them. They're simply just natural and comfortable.



### SLIM, LITHE AND COMFORTABLE. LIGHTWEIGHT MAGNESIUM BODY.

The housing frame is comprised of magnesium, which has the highest vibration-damping rate among practical metals. It is both lightweight and has outstanding rigidity. The result is a lightweight body of 320 grams, making it comfortable and unobtrusive even when listening over extended periods of time.



### TWO LAYERS HEADBAND AND SMOOTH STEPLESS SLIDER.

The arm of the headband is made of stainless steel, and it features optimal use of lateral pressure that even further reduces the already small burden on the ears. This provides maximum comfort during prolonged use. Moreover, the head pad, which comes into direct contact with the head, has three-dimensional sewing with moderate thickness, fits flexibly on the head and smoothly disperses the surface pressure. In addition, the stepless slider allows you to finely adjust the band for custom comfort.



### SNUG FIT. INCLINED SWIVEL MECHANISM.

It is crucial that the housing fits snugly into the space behind the ear in order to eliminate bias in localization due to air leakage and compensate for the lack of volume in the low range. The YH-5000SE smoothly stabilizes surface pressure by tilting the rotation axis of the swivel and providing a degree of vertical mobility. The snug fit provided to the ears and head delivers a wonderfully comfortable listening experience.

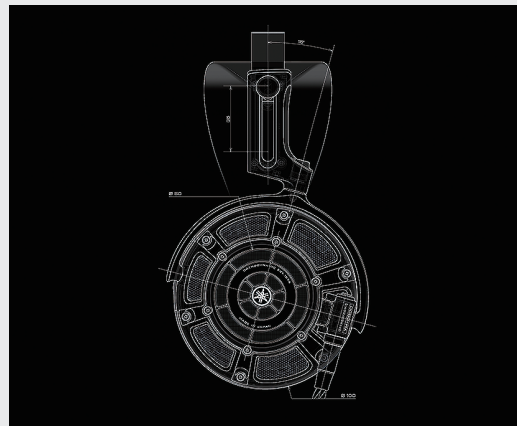


**QUALITY THAT CREATES THE SATISFACTION OF OWNING AND USING**

We have brought together all the skills and aesthetic expertise of Yamaha's craftsmanship to these headphones, so that you'll proudly and fondly use them for a long time—like you would a fine musical instrument. No compromises were made and every detail was lovingly attended to, lending a sense of dignity befitting the flagship model.

**TEXTURE AND DESIGN COMBINED FOR EXCEPTIONALLY FUNCTIONAL BEAUTY.**

Featuring an extraordinarily dignified design where all non-essential aspects have been stripped away, these headphones echo the dynamism and vibrant exuberance of the “life” found in various music. We employed a triaxial mesh material used in aerospace applications to protect the open-back housing, giving it not only a high-quality texture, but a beautiful design as well.



**HANDMADE BY SKILLED CRAFTSMEN. SPECIAL FACTORY FOR FLAGSHIP MODELS.**

From the manufacturing of the driver to the careful completion of the entire assembly, the production of the YH-5000SE requires extremely high technical capabilities and precision. For this reason, we chose to produce this exclusive model at Yamaha's Kakegawa factory, which handles our flagship models of grand pianos and audio components. Subject to the strictest quality control measures, each unit is carefully assembled by skilled craftsmen. Only those that have passed rigorous inspections are finally shipped.



**ACCESSORIES**

**Headphone Earpads**



**HEP-5000LE**  
Skin material: Sheep skin leather / PU leather

**HEP-5000SU**  
Skin material: Ultrasuede

**Headphone Cable**



**HUC-SC020**  
Unbalanced cable with 3.5 mm 3-pole plug

**HBC-SC020**  
Balanced cable with Pentaconn 4.4mm 5-pole plug

**Headphone Stand**



**HST-5000**  
Dimension:  
W118 x H283 x L146 mm

**Headphone Cable (optionally available)**

**HXC-SC020**  
Balanced 2-meter cable with XLR connector

