

R-N2000A

NETWORK RECEIVER



R-N2000A

Output Power

Rated Output Power	90 W + 90 W (8 ohms, 20 Hz—20 kHz, 0.07% THD)
Dynamic Power per Channel (8/6/4/2 ohms)	100 W / 130 W / 185 W / 215 W

Network

Wi-Fi	YES
File Format	MP3, WMA, MPEG4 AAC, WAV, FLAC, AIFF, ALAC, DSD
Bluetooth®	Version 4.2
Supported Codecs	SBC, AAC* * Receiving only.

Terminals

Inputs	Analog Audio: 4 (CD, PHONO, LINE 1, LINE 2), Digital Audio: 3 (Optical 1, Optical 2, Coaxial), HDMI ARC: 1
Outputs	USB [Type B]: 1 Speaker: 2 (4 terminals), Subwoofer :1, Preout :1, Headphone: 1
Others	Trigger out: 1, YPAO mic: 1

General

Standby Power Consumption	1.6 W (Wired, Network standby on) 1.8 W (WiFi, Network standby on) 0.1 W (Normal standby off)
Dimensions (W x H x D)	435 x 157 x 473 mm (without antenna) 435 x 233 x 473 mm (with antenna up)
Weight	22.1 kg

Features

AirPlay 2	YES
YPAO	YES
MusicCast	YES
Gapless Playback	YES

App	MusicCast CONTROLLER
-----	----------------------



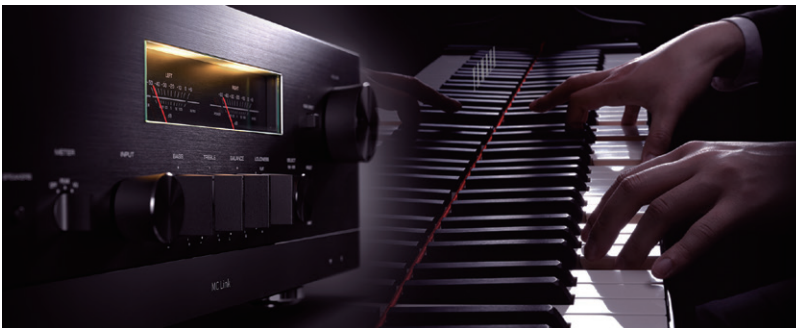
Silver

INVENTIVE Hi-Fi

Introducing a modern Hi-Fi component, effortlessly amalgamating the new generation of music listening such as high-resolution music streaming, with time-honoured Hi-Fi quality. Drawing on Yamaha's unmatched history in music and acclaimed Hi-Fi products, the R-N2000A will transform your living room into a space with breathtakingly beautiful sound.



TRUE SOUND



This is sound that only Yamaha can realise as the only audio brand in the world that handles everything from the moment a sound is created to the time it reaches the human ear. Simply close your eyes and feel the artist performing right there in front of you, and experience the profound sensation of being truly 'Closer to the Artist.'

SOUND IMAGE

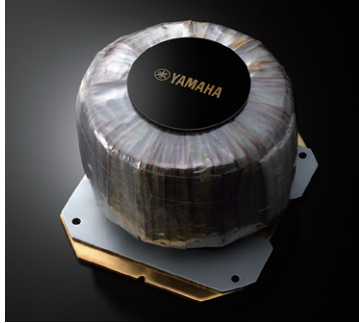
YPAO™ (Yamaha Parametric Room Acoustic Optimizer)

Environmental factors play an important role in the sonic signature of a room, and with any type of audio. Yamaha's own YPAO™ automatic calibration technique, refined over decades of use in Home Theatre products, has been optimised for the R-N2000A to deliver the ideal listening environment, as if you were in a professional audio listening room - without requiring any laborious manual setting adjustments. YPAO features precision EQ, which performs exceptionally high-precision equalization with accuracy of up to 192 kHz / 64-bit audio resolution. YPAO™ R.S.C. (Reflected Sound Control) works in tandem to actively control the important early reflection sounds, automatically adjusting and optimising how the sound is heard in your room, depending on the materials of the walls and the speaker placement. Which means you can enjoy the profound sound and immersive feeling unique to Hi-Fi audio - right in your own living room.



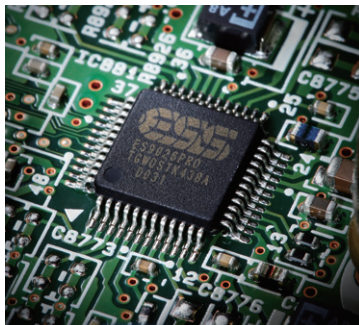
TOROIDAL TRANSFORMER

Usually reserved for flagship Hi-Fi components, the R-N2000A benefits from the technical proficiency and absolute musicality of a toroidal transformer. Combined with an array of high-end Hi-Fi features and components, the toroidal transformer assists in ensuring the musical emotion is conveyed to the listener. Moreover, a 3 mm brass base is sandwiched between the bottom of the transformer and the inner chassis to control vibration emanating from transformer, delivering an overwhelmingly spacious sound filled with realism.



HIGH-PERFORMANCE DAC

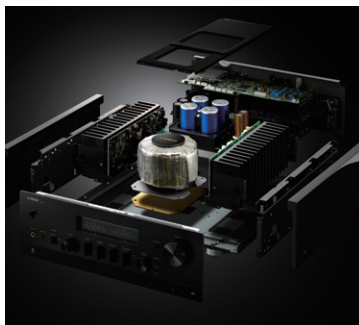
In pursuit of clear, transparent sound field reproduction while delivering rich and fully detailed level of musicality, we have adopted the state of the art ES9026PRO digital-to-analog converter from ESS Technologies. This high-quality DAC achieves highly accurate signal conversion through the balanced analog audio output and further refined current delivery for four-channel operation, effectively reproducing even the subtle ambience of concert halls and delicate expressive nuances in the sound.



DYNAMICS

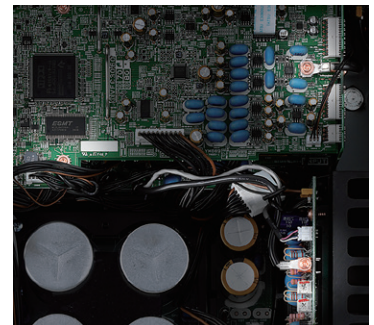
MECHANICAL GROUND CONCEPT

Just as with the Yamaha Hi-Fi flagship model, the R-N2000A employs the mechanical ground concept. The concept begins with the bolts of the feet welded directly to the main chassis, and continues with the large heat sink, power transformer and block capacitors also directly bolted to the chassis. This design prevents unwanted vibration, resulting in powerful, highly expressive low-frequency response and letting you feel the deep groove of the music.



LOW IMPEDANCE CONCEPT

In order to thoroughly eliminate energy loss and degradation of the audio signal, the R-N2000A features thick wires for the ground connection a critical feature that establishes the componentry as being truly premium Hi-Fi. In addition, a screw connection is adopted for the output from the power amplifier section in order to strengthen the ground, which is important for audio quality. By achieving these, an open, natural sound stage is realised, bringing the artist and listener closer together.



SILVER-PLATED BRASS FEET

Completing the solid rigidity of the amplifier are its heavy-duty silver-plated brass feet firmly reinforcing the rich, foundational low-frequency response and filling it with musicality.



TONAL BALANCE

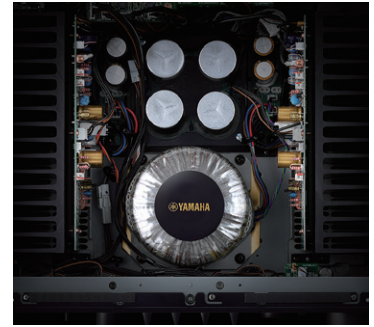
FLOATING AND BALANCED POWER AMPLIFIER

Equipped with our original amplifier technology, the power amplifier circuitry including the power supply is completely independent from the ground, and the influence of minute voltage fluctuations and external ground noise is completely eliminated. A variety of benefits result from this circuit design, including perfect symmetry of push-pull operation in the output stage, attainment of excellent S/N ratio, and an overwhelmingly expressive power that perfectly draws out the sound of any musical instrument.



SYMMETRICAL CONSTRUCTION

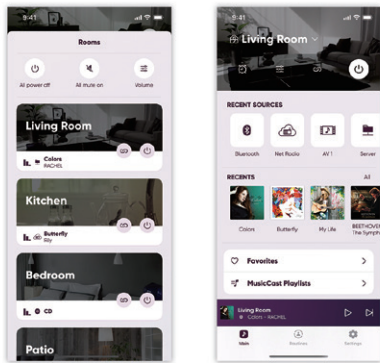
Pursuing the epitome of stereo reproduction in this component, the R-N2000A has adopted perfectly symmetrical, folding-book construction, with the power supply in the center and the power amplifier blocks at both ends of the main unit. This gives the unit ideal weight balance, and suppresses adverse effects between channels for extraordinary channel separation. The result is remarkably pure reproduction of every part of the sound just as is.



OTHER FEATURES

MUSICCAST

The R-N2000A is equipped with Yamaha's original MusicCast network system. Moreover, it is compatible with a variety of streaming services such as Tidal and Spotify, letting you fully enjoy exceptionally high-quality sound unique to today's high-resolution and lossless sound sources, with complete fidelity.



* Music service availability varies by region and may change or be discontinued without notice.

USB DAC FUNCTION

A stable transmission method through asynchronous transmission has been adopted. Moreover, an ultra-precision dedicated crystal clock has been installed to improve signal accuracy. It also supports DSD 11.2MHz native playback and 384kHz playback, letting you enjoy exceptionally high-quality sound that takes full advantage of high-resolution audio sources.

GORGEOUS LEVEL METERS



HDMI ARC TERMINAL



ORIGINAL SPEAKER TERMINALS



Although care is taken to ensure the accuracy of the information presented, some variations may occur. Yamaha Music Australia Pty. Ltd. reserves the right to correct any errors, omissions or misprints. Errors and omissions excepted.

App Store is a service mark of Apple Inc., registered in the U.S. and other countries. Google Play is a trademark of Google LLC. The terms HDMI and HDMI High-Definition Multimedia Interface, and the HDMI Logo are trademarks or registered trademarks of HDMI Licensing Administrator, Inc. in the United States and other countries. The Wi-Fi CERTIFIED™ Logo is a registered trademark of Wi-Fi Alliance®. The Bluetooth® word mark and logos are registered trademarks owned by Bluetooth SIG, Inc. and any use of such marks by Yamaha Corporation is under license. Other trademarks and trade names are those of their respective owners. Use of the Works with Apple badge means that an accessory has been designed to work specifically with the technology identified in the badge and has been certified by the developer to meet Apple performance standards. Apple, AirPods, Apple TV, Apple Watch, iPad, iPad Air, iPad Pro, iPhone, Lightning, and iTunes are trademarks of Apple Inc., registered in the U.S. and other countries and regions.