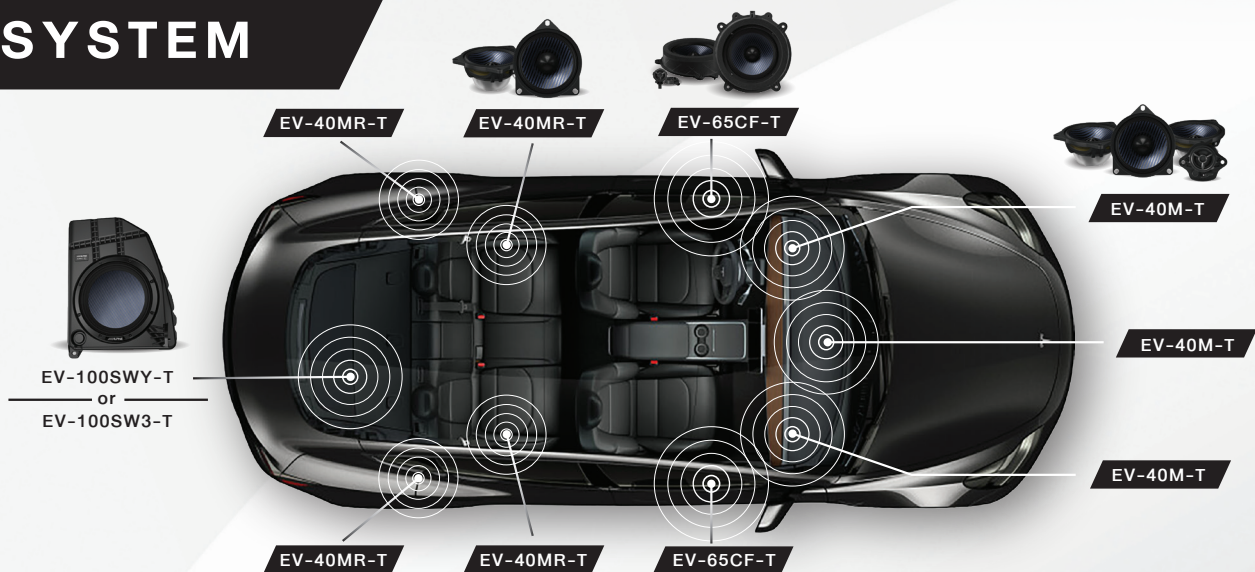


# EXCLUSIVE SOUND SYSTEM *for* TESLA



DESIGNED FOR TESLA

## SYSTEM



\* System will be changed depend on Tesla model.

# SPECIFICATIONS

# PLUG AND PLAY SPEAKERS



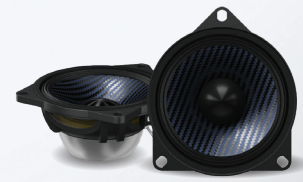
## EV-65CF-T

- Woofer size : 6.5"
- Tweeter Size : 1"
- Impedance : 4  $\Omega$
- RMS Power : 50W
- Peak Power : 200W
- Sensitivity : 89dB
- Frequency response : 65Hz - 20KHz



## EV-40M-T

- Mid Range size : 4"
- Impedance : 4  $\Omega$
- RMS Power : 40W
- Peak Power : 160W
- Sensitivity : 90dB
- Frequency response : 100Hz - 18KHz



## EV-40MR-T

- Mid Range size : 4"
- Tweeter Size : 1"
- Impedance : 4  $\Omega$
- RMS Power : 40W
- Peak Power : 160W
- Sensitivity : 90dB
- Frequency response : 100Hz - 18KHz

# SUBWOOFERS



## EV-100SWY-T

- Subwoofer size : 10"
- Impedance : 4  $\Omega$  + 4  $\Omega$
- RMS Power : 100W
- Peak Power : 500W
- Sensitivity : 86dB
- Frequency response : 25Hz-300Hz

## MODEL Y



## EV-100SW3-T

- Subwoofer size : 10"
- Impedance : 4  $\Omega$  + 4  $\Omega$
- RMS Power : 100W
- Peak Power : 500W
- Sensitivity : 86dB
- Frequency response : 25Hz-300Hz

## MODEL 3

|                    |  |  |  |  |  |
|--------------------|---|---|---|---|---|
|                    | EV-65CF-T   | EV-40M-T  | EV-40MR-T   | EV-100SY-T  | EV-100S3-T  |
| SPEAKER SIZE       | Woofer 6.5 Inch   | Mid range 4 Inch  | Mid range 4 Inch  | Subwoofer 10 Inch   | Subwoofer 10 Inch   |
| RATE POWER         | 50 W  | 40 W  | 40 W  | 100 W   | 100 W   |
| MAX POWER          | 200 W   | 160 W   | 160 W   | 500 W   | 500 W   |
| FREQUENCY RESPONSE | 65Hz - 20KHz  | 100Hz - 18KHz   | 100Hz - 18KHz   | 25Hz - 300Hz  | 25Hz - 300Hz  |
| IMPEDANCE          | 4 $\Omega$  | 4 $\Omega$  | 4 $\Omega$  | 4 $\Omega$ + 4 $\Omega$   | 4 $\Omega$ + 4 $\Omega$   |
| SENSITIVITY        | 89dB  | 90dB  | 90dB  | 86dB  | 86dB  |
| CONE MATERIAL      | Bullet Proof + Carbon Fiber   | Bullet Proof + Carbon Fiber   | Bullet Proof + Carbon Fiber   | Bullet Proof + Carbon Fiber   | Bullet Proof + Carbon Fiber   |