

*** Before installation, please check the Door Weight Range Table to determine if the NSDX-20 is the correct stay for your size and weight door.**

1 - Position and Install NSDX body and arm fixing plate

The hinge type and the overlay affect the placement of the body and the arm fixing plate. Please use the corresponding diagram to determine the mounting dimensions for your application. Temporarily position and install body and arm fixing plate using the tapping screws on the oval holes.

2 - Attach arm to arm fixing plate

Rotate stay to align the hole on the arm to the arm fixing plate. Attach arm to arm fixing plate using the supplied truss screw.

3 - Adjustment and Operation

Check the function and adjust the position of the body and arm fixing plate on oval holes. Tighten screws on oval holes, then fix the position of the body and arm fixing plate with tapping screws on the round holes.

Speed Adjustment

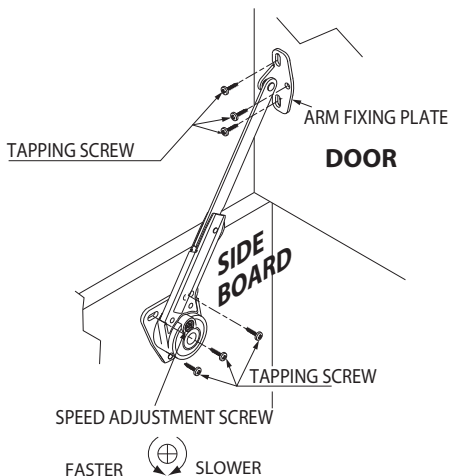
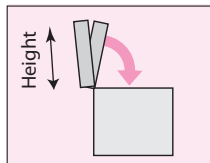
Upon completion of installation, make sure the door opens and closes properly. To adjust the closing speed of door, turn speed adjustment screw. In case 2 units (left & right) are used on a single door, the speed adjustment screws on both sides must be turned evenly.

Door Weight Range Table

Per pair, in Lbs

Door Height (inches)	Door Weight (lbs)	
	Min	Max
8	9.5	30.0
9	8.4	26.7
10	7.6	24.0
11	6.9	21.8
12	6.3	20.0
13	5.8	18.5
14	5.4	17.1
15	5.1	16.0
16	4.8	15.0
17	4.5	14.1
18	4.2	13.3
19	4.0	12.6
20	3.8	12.0
21	3.6	11.4
22	3.5	10.9
23	3.3	10.4
24	3.2	10.0
25	3.0	9.6
26	2.9	9.2

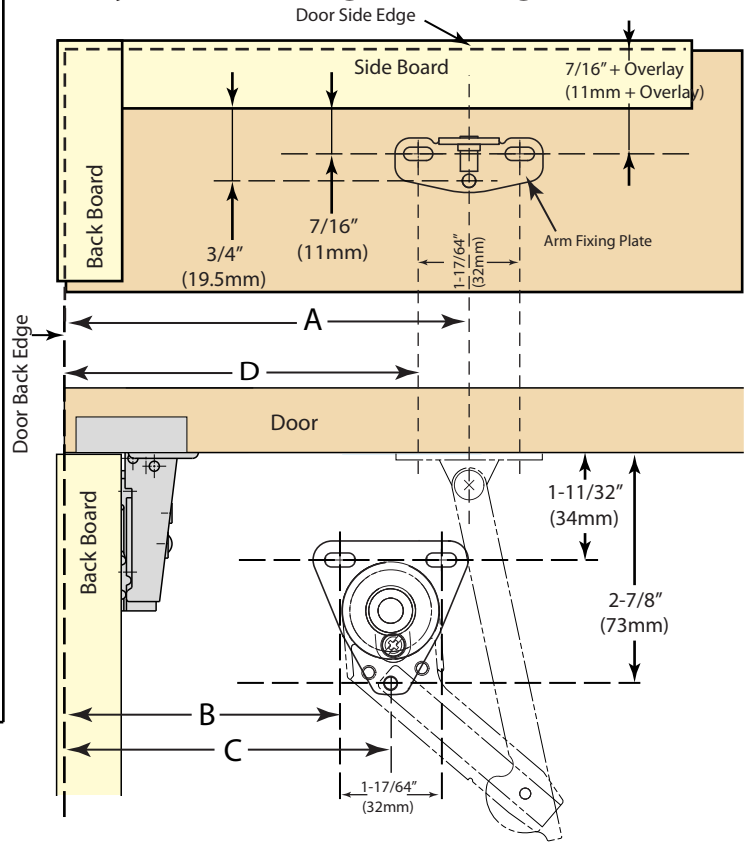
The Stay must be used taking the weight and door height into consideration. The table indicates the usable weight range per door height when using two stays. When using one stay, the weight range will be half of what is shown.



NSDX-20L (left side) shown

Please remember to use the **Stay Calculator** prior to purchase to check the stay is applicable.

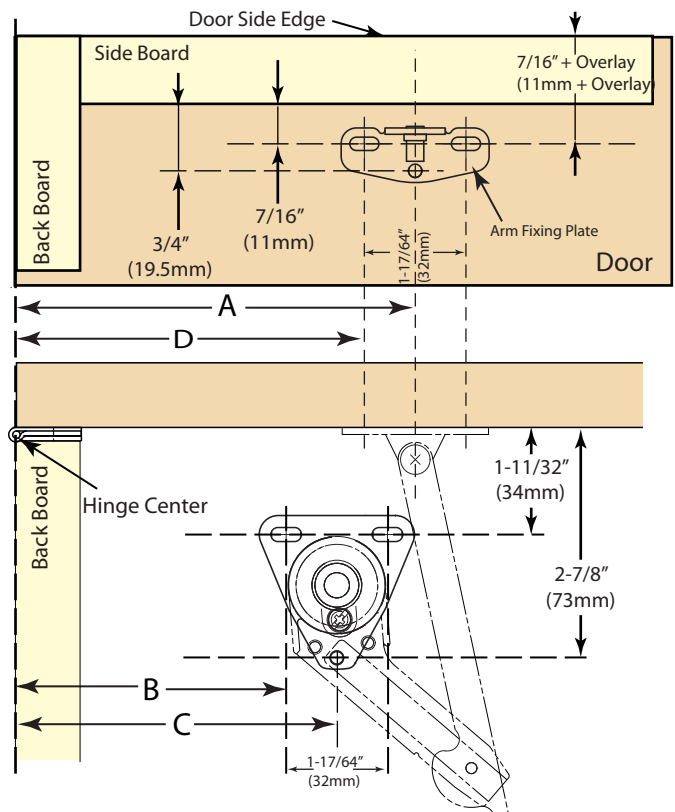
Overlay Concealed Hinge (Euro Hinge) Installation



Dimensions in inches are rounded to the closest 1/16 of an inch.

Opening angle	A	B	C	D
70°	4-15/16" (126mm)	3-3/8" (85mm)	4" (101mm)	4-5/16" (110mm)
105°	3-1/16" (103mm)	2-7/16" (62mm)	3-1/16" (78mm)	3-7/16" (87mm)

Overlay Single Knuckle (Piano, Butt, etc) Hinge



Dimensions in inches are rounded to the closest 1/16 of an inch.

Opening angle	A	B	C	D
70°	4-15/16" (125mm)	3-5/16" (84mm)	3-15/16" (100mm)	4-5/16" (109mm)
105°	3-13/16" (97mm)	2-3/16" (56mm)	2-13/16" (72mm)	3-3/16" (81mm)