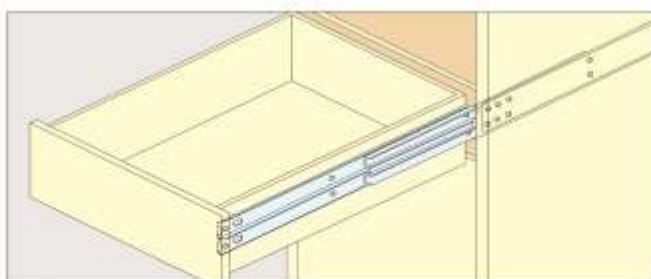
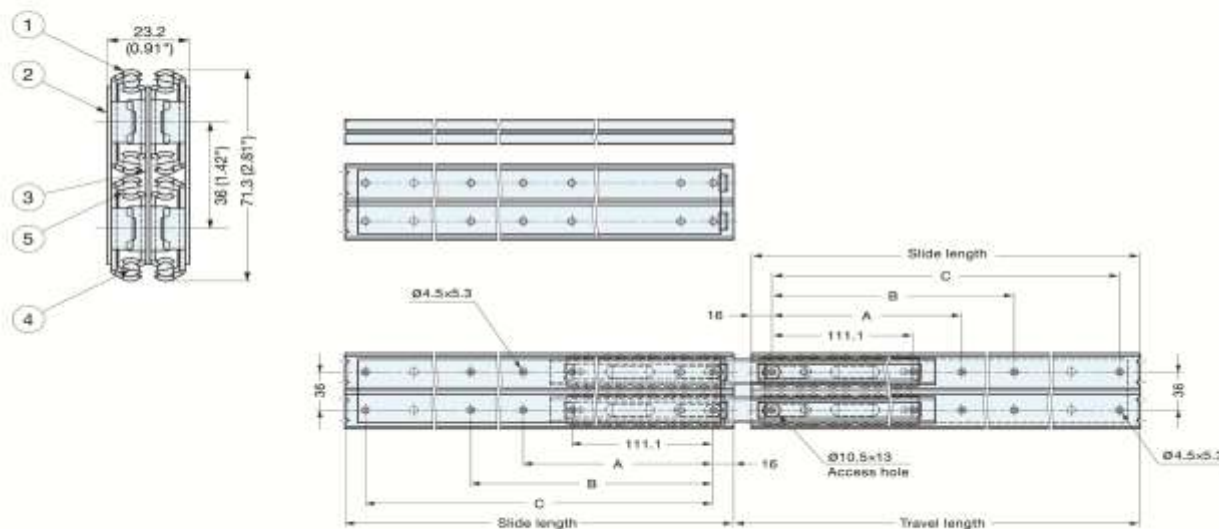


# Stainless Steel Drawer Slide



Installation

- Full extension
- Positive stop
- Non-handed
- Heavy duty
- Mount with M4 or #8 Binding, Pan, or Truss head screws

25.4mm=1"

No.	Part	Material
①	Outer Rail	304 Stainless Steel
②	Tie Plate	
③	Intermediate Member	
④	Retainer	
⑤	Balls	

ALL MEASUREMENTS IN MM								
CODE	SLIDE LENGTH	TRAVEL LENGTH	A	B	C	LOAD CAPACITY	WEIGHT (KG)	BOX QTY
ENQUIRE	305	319	-	149.2	273	272KG/PAIR	1.67	4
ENQUIRE	355.8	369.8	-	200	323.8	268KG/PAIR	2	4
ENQUIRE	406.6	420.6	-	250.8	374.6	259KG/PAIR	2.34	3
ENQUIRE	457.4	471.4	212.7	301.6	425.4	250KG/PAIR	2.5	3
SS10000	508.2	522.2	238.1	352.4	476.2	241KG/PAIR	2.84	3
ENQUIRE	559	573	263.5	403.2	527	229KG/PAIR	3.25	3
ENQUIRE	609.8	623.8	288.9	454	577.8	216KG/PAIR	3.5	2
ENQUIRE	660.6	674.6	314.3	504.8	628.6	200KG/PAIR	3.84	2
SS10001	711.4	725.4	339.7	555.6	679.4	182KG/PAIR	4.17	2