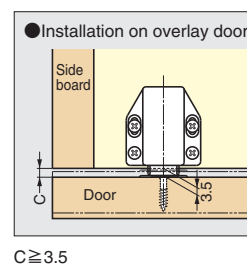
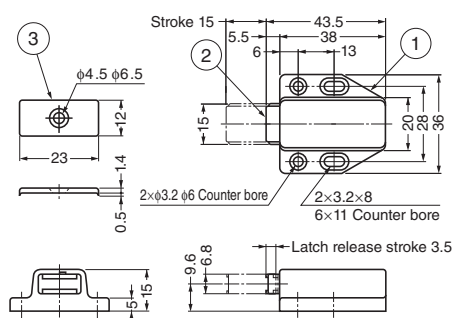


## MAGNETIC TOUCH LATCH


**ML-80**


### ■ Features

- The rotary cam mechanism offers a longer life than the usual spring mechanism.
- No handle needed, just push to open/close.

### ■ Remarks

- For overlay doors, make a 3.5 mm gap between door and cabinet frame.
- For large door please use ML120. (below)
- Black colour version also available. For further details, please contact local representatives.

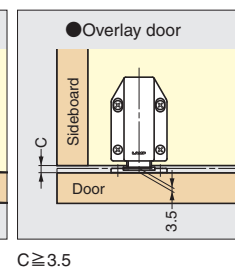
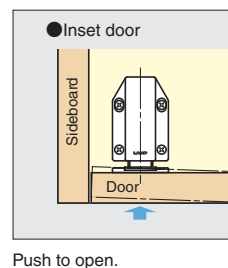
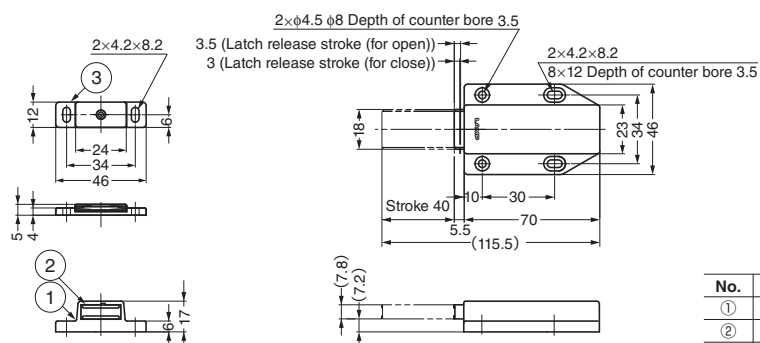
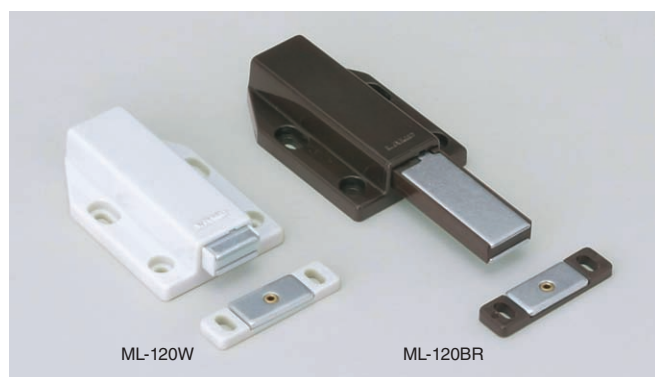
### ■ Parts Included

Round head wood screw 3.1x13, Countersunk head wood screw 2.7x13

| No. | Part Name     | Material | Finish/Colour |
|-----|---------------|----------|---------------|
| ①   | Body          | ABS      | Brown, White  |
| ②   | Yoke          | Steel    | Zinc Chromate |
| ③   | Counter Plate | Steel    | Zinc Chromate |

| Item Code   | Item Name | Colour | Magnetic Force N | Magnetic Force kgf | Weight | Box    | Carton  |
|-------------|-----------|--------|------------------|--------------------|--------|--------|---------|
| 140-050-270 | ML-80BR   | Brown  | 15.7 N           | 1.6 kgf            | 22 g   | 20 pcs | 400 pcs |
| 140-050-271 | ML-80W    | White  | 15.7 N           | 1.6 kgf            | 22 g   | 20 pcs | 400 pcs |

## MAGNETIC TOUCH LATCH


**ML-120**


### ■ Features

- The rotary cam mechanism offers a longer life than the usual spring mechanism.
- No handle needed, just push to open/close.

### ■ Remarks

For overlay door, make a 3.5 mm gap between door and cabinet frame.

### ■ Parts Included

Countersunk head tapping screw 4×16

| No. | Part Name     | Material | Finish/Colour              |
|-----|---------------|----------|----------------------------|
| ①   | Body          | ABS      | Brown, White               |
| ②   | Yoke          | Steel    | Zinc Chromate              |
| ③   | Counter Plate | Steel    | Brown, White/Zinc Chromate |

| Item Code   | Item Name | Colour | Magnetic Force N | Magnetic Force kgf | Weight | Box    | Carton  |
|-------------|-----------|--------|------------------|--------------------|--------|--------|---------|
| 140-050-338 | ML-120BR  | Brown  | 23.5 N           | 2.4 kgf            | 53 g   | 20 pcs | 240 pcs |
| 140-050-337 | ML-120W   | White  | 23.5 N           | 2.4 kgf            | 53 g   | 20 pcs | 240 pcs |