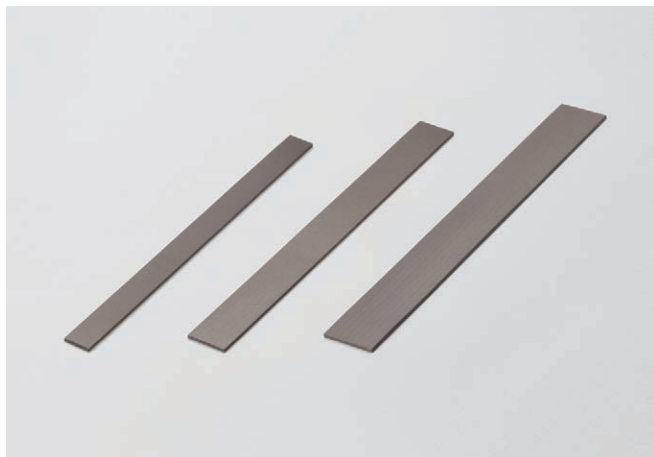


MAGNETIC RUBBER SHEET

NMS

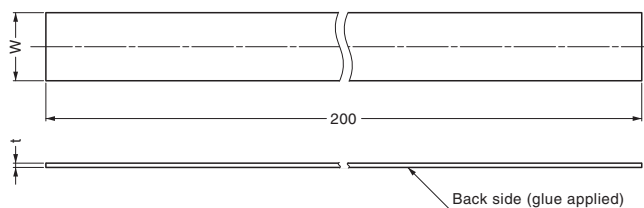


■ Features

- Easy to cut.
- Easy to apply with glue.
- Ultra thin but strong magnetic force by using neodymium magnet.
- Weaker magnetic type (KMS) available. Please contact with customer service.

■ Remarks

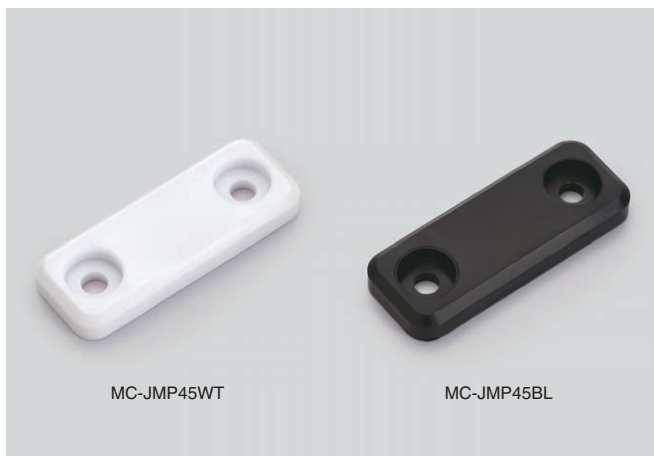
- Don't use outside.
- Max. temperature 80°C



Item Code	Item Name	Material	W	t	Magnetic Force N/cm ²	Magnetic Force kgf/cm ²	Weight	Carton
140-021-209	NMS-1-200	Nitrile Rubber (NBR) / Neodymium	12.7	0.8	3.8 N/cm ²	0.39 kgf/cm ²	10 g	500 pcs
140-021-210	NMS-2-200		19.1	0.8	3.8 N/cm ²	0.39 kgf/cm ²	16 g	500 pcs
140-021-211	NMS-3-200		25.4	0.8	3.8 N/cm ²	0.39 kgf/cm ²	21 g	500 pcs
140-021-212	NMS-4-200		12.7	1.5	5.4 N/cm ²	0.55 kgf/cm ²	19 g	500 pcs
140-021-213	NMS-5-200		19.1	1.5	5.4 N/cm ²	0.55 kgf/cm ²	30 g	250 pcs
140-021-214	NMS-6-200		25.4	1.5	5.4 N/cm ²	0.55 kgf/cm ²	39 g	250 pcs

SEALED COUNTER PLATE

MC-JMP45



■ Features

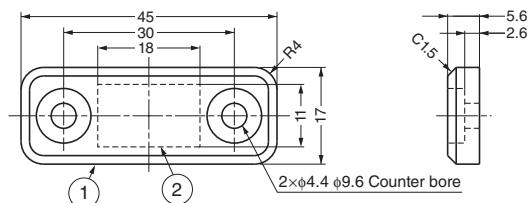
Hermetically sealed, ideal for high corrosion environments such as kitchen and bath equipment.

■ Recommended Screw

Tapping screw nominal 4 (truss or binding head, made of stainless steel), M4 screw (made of stainless steel).

■ Optional Magnetic Catch Examples:

- Rubber sealed: MC-MS50 (P.271)
- Ultra thin: MC-YN015S (P.261), MC-YN001 (P.261), MC-158,159 (P.262)
- Plastic sealed: MC-JM45 (P.270), MC-JM50 (P.271), MC-JM63G (P.269)



No.	Part Name	Material
①	Body	Polypropylene (PP)
②	Plate	Steel

Item Code	Item Name	Colour	Weight	Box	Carton
140-050-122	MC-JMP45WT	White	7.3 g	100 pcs	1,000 pcs
140-029-241	MC-JMP45BL	Black	7.3 g	100 pcs	1,000 pcs