

TEST
METHOD 9STAINLESS
430
STEEL

AP-FB20

SHELF SUPPORT

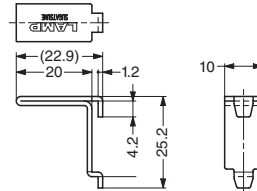


■ Features

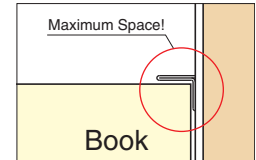
- Mirror & Black colour available.
- For AP-DM and AP-DH (P.175).
- Designed to maximize the space under the shelf.

■ Sold Separately

- Shelf support cap AP-FC20 (below)
- Shelf holder AP-FA20 (P.177)
- Shelf holder AP-FK20 (P.178)



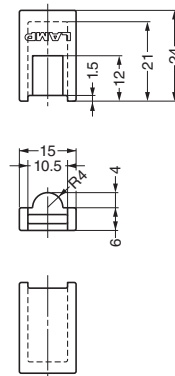
■ Application Example



| Item Code | Item Name | Material | Finish | Load Capacity/4 pcs | | Weight | Box | Carton |
|-------------|------------|--------------------------|--------|---------------------|--------|--------|---------|----------|
| 120-030-158 | AP-FB 20 | Stainless Steel (SUS430) | Mirror | 441 N | 45 kgf | 5.3 g | 300 pcs | 3000 pcs |
| 120-025-835 | AP-FB 20BL | Stainless Steel (SUS430) | Black | 441 N | 45 kgf | 5.3 g | 300 pcs | 3000 pcs |

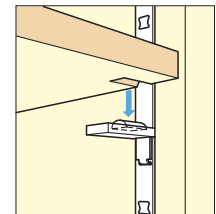
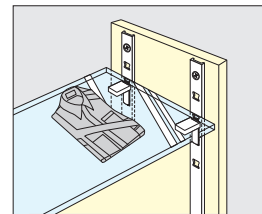
SHELF SUPPORT CAP

AP-FC20



■ Features

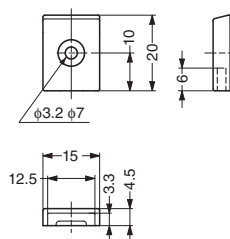
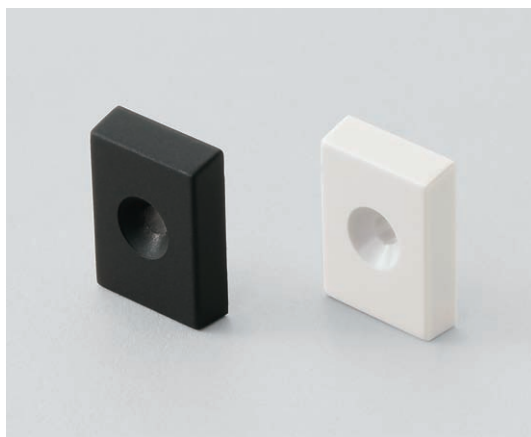
- Light Grey & Black colour available.
- For shelf support AP-FB20.
- Insert the cap with half round shape facing up, and cutout the shelf to prevent from sliding.



| Item Code | Item Name | Material | Colour | Weight | Box | Carton |
|-------------|------------|-----------------|------------|--------|---------|----------|
| 120-030-159 | AP-FC20 | Elastomer (TPE) | Light Grey | 1.6 g | 400 pcs | 4000 pcs |
| 120-028-502 | AP-FC20-BL | Elastomer (TPE) | Black | 1.6 g | 400 pcs | 4000 pcs |

END CAP

AP-EC20



■ Features

- Light Grey & Black colour available.
- For AP-DM (P.175) and SPE (P.174).

■ Application Example



| Item Code | Item Name | Material | Colour | Weight | Box | Carton |
|-------------|------------|----------|------------|--------|---------|----------|
| 120-030-157 | AP-EC20 | ABS | Light Grey | 1.0 g | 400 pcs | 4000 pcs |
| 120-028-503 | AP-EC20-BL | ABS | Black | 1.0 g | 400 pcs | 4000 pcs |