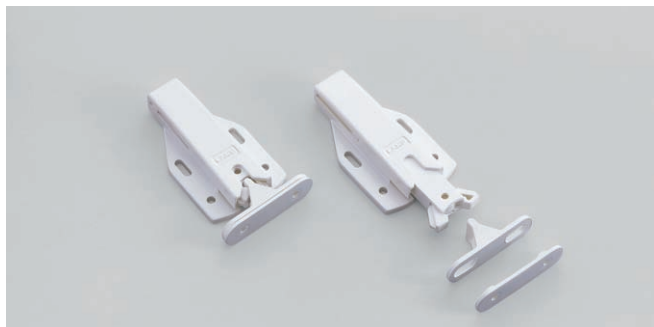


NON-MAGNETIC TOUCH LATCH



MLC-100WT



■ Features

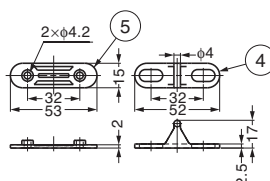
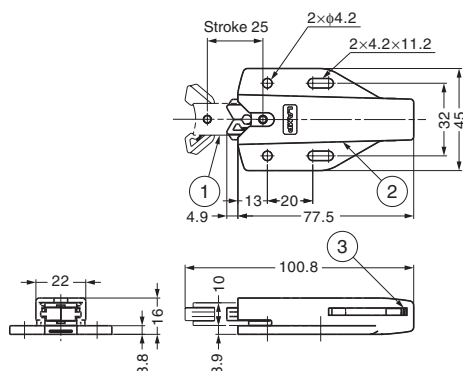
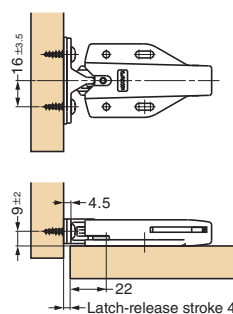
- Long stroke.
- No handle needed, just push to open/close.
- Non magnetic.
- Wide adjustment range: ± 2 mm vertically and ± 3.5 mm horizontally.
- Passed 100,000-times opening and closing test.

■ Parts Included

Truss head tapping screw 4×16 (SUS)

■ Recommended Screw

M4 pan or truss head screw



No.	Part Name	Material	Finish/Colour
①	Arm	Polyacetal (POM)	White
②	Body	PBT	White
③	Spring	Steel	Yellow Zinc Chromate
④	Counter Plate	Polyacetal (POM)	White
⑤	Counter Plate	PBT	White

Item Code	Item Name	Retaining Force N	Retaining Force kgf	Push Force N	Push Force kgf	Weight	Box	Carton
140-028-540	MLC-100WT	59 N	6 kgf	12.7 N	1.3 kgf	32 g	20 pcs	240 pcs

NON-MAGNETIC TOUCH LATCH



MLC-HT130BL



■ Features

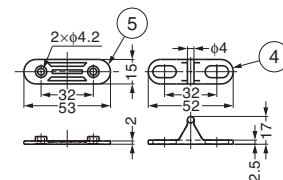
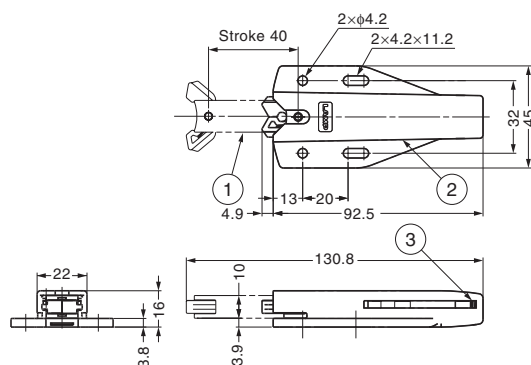
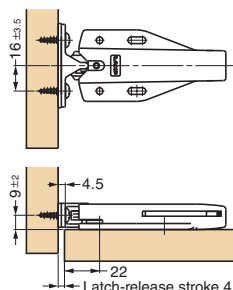
- Heat-resistance (up to 120°C) and long stroke.
- No handle needed, just push to open/close.
- Non magnetic.
- Wide adjustment range: ± 2 mm vertically and ± 3.5 mm horizontally.
- Passed 100,000-times opening and closing test.

■ Parts Included

Truss head tapping screw 4×16 (SUS)

■ Recommended Screw

M4 pan or truss head screw



No.	Part Name	Material	Finish/Colour
①	Arm	Polyamide (PA)	Black
②	Body	PBT	Black
③	Spring	Stainless Steel (SUS304)	Plain
④	Counter Plate	Polyamide (PA)	Black
⑤	Counter Plate	PBT	Black

Item Code	Item Name	Retaining Force N	Retaining Force kgf	Push Force N	Push Force kgf	Weight	Box	Carton
140-028-539	MLC-HT130BL	※117.6 N	※12 kgf	16.7 N	1.7 kgf	40 g	20 pcs	240 pcs

※Retaining force reduces with temperature and reaches 3 kgf (29.4 N) at 120°C .