

TEST  
METHOD 9STAINLESS  
430  
STEEL

AP-FB20

## SHELF SUPPORT

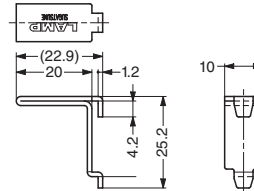


## ■ Features

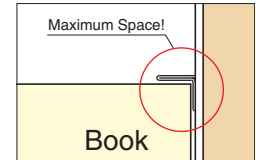
- Mirror & Black colour available.
- For AP-DM and AP-DH (P.175).
- Designed to maximize the space under the shelf.

## ■ Sold Separately

- Shelf support cap AP-FC20 (below)
- Shelf holder AP-FA20 (P.177)
- Shelf holder AP-FK20 (P.178)



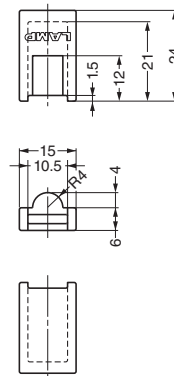
## ■ Application Example



Item Code	Item Name	Material	Finish	Load Capacity/4 pcs		Weight	Box	Carton
120-030-158	AP-FB 20	Stainless Steel (SUS430)	Mirror	441 N	45 kgf	5.3 g	300 pcs	3000 pcs
120-025-835	AP-FB 20BL	Stainless Steel (SUS430)	Black	441 N	45 kgf	5.3 g	300 pcs	3000 pcs

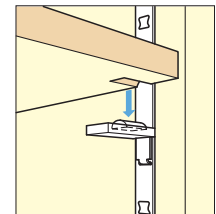
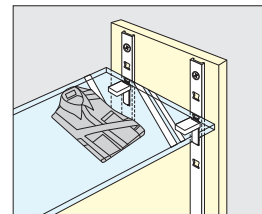
## SHELF SUPPORT CAP

AP-FC20



## ■ Features

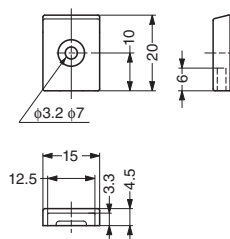
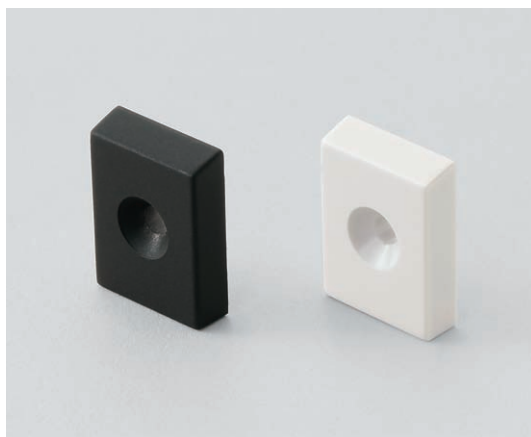
- Light Grey & Black colour available.
- For shelf support AP-FB20.
- Insert the cap with half round shape facing up, and cutout the shelf to prevent from sliding.



Item Code	Item Name	Material	Colour	Weight	Box	Carton
120-030-159	AP-FC20	Elastomer (TPE)	Light Grey	1.6 g	400 pcs	4000 pcs
120-028-502	AP-FC20-BL	Elastomer (TPE)	Black	1.6 g	400 pcs	4000 pcs

## END CAP

AP-EC20



## ■ Features

- Light Grey & Black colour available.
- For AP-DM (P.175) and SPE (P.174).

## ■ Application Example



Item Code	Item Name	Material	Colour	Weight	Box	Carton
120-030-157	AP-EC20	ABS	Light Grey	1.0 g	400 pcs	4000 pcs
120-028-503	AP-EC20-BL	ABS	Black	1.0 g	400 pcs	4000 pcs