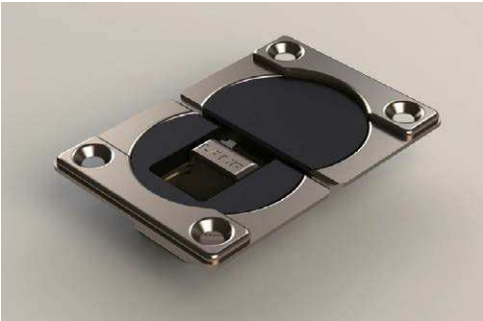


# DROP HINGE (ADJUSTABLE TYPE)

**L=R** SDH-P



**■ Features**

- 3-way adjustment.

Overlay: 16-19 mm / Horizontal: ± 1 mm / Door gap: 1-3 mm

- Can be used with soft-down stay SDS-100, SDS-100TV, NSDX-10(R/L)K, NSDX-10(R/L)K-TV, CSD-10-TV.

**■ Recommended Screws**

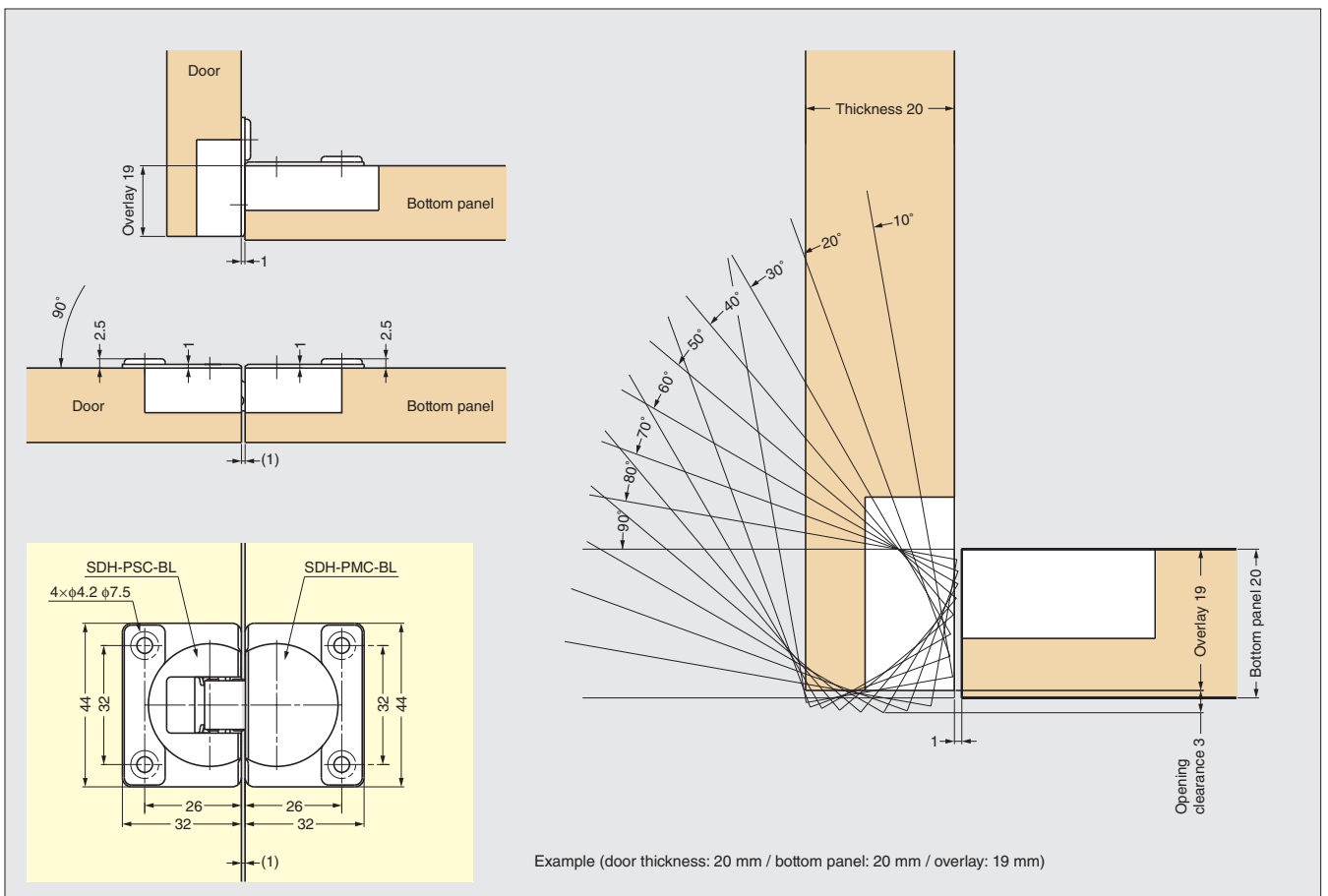
Pan head tapping screw 3.5

**■ Sold Separately**

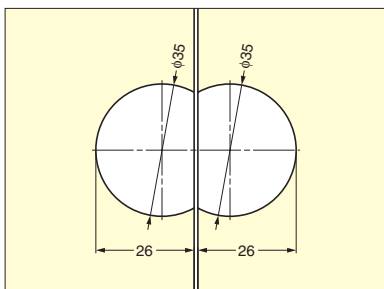
Cover cap SDH-PSC-BL and SDH-PMC-BL

This is a computer graphic and does not show the actual product.

Item Code	Item Name	Material	Finish	Overlay	Door Thickness	Opening Angle	Box	Carton
170-034-200	SDH-P	Steel	Nickel	16~19	16~20	90°	50 pcs	200 pcs
170-034-201	SDH-PSC-BL	POM	Black	—	—	—	50 pcs	1000 pcs
170-034-202	SDH-PMC-BL	POM	Black	—	—	—	50 pcs	1000 pcs



**■ Cut Out Dimensions**



**■ Number of Hinges**

In case of door thickness up to 20 mm. Material: particle board.

