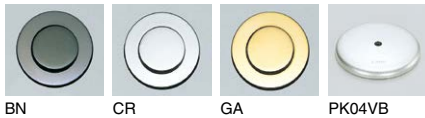
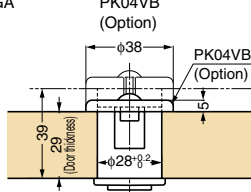


PUSH KNOB



Part Name	Material
Push Knob	Zinc Alloy (ZDC)
Latch Body	ABS
Cap	ABS



Features

- Push in knob to make it flush
- 15-35mm thickness without cap, 29-39mm with cap (PK04VB, sold separately)

Remarks

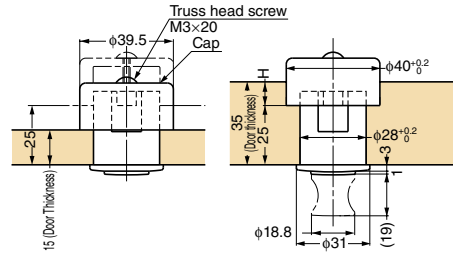
Install with bracket when applied to sheet metal.

Parts Included

Truss head screw M3x20 (SUS)

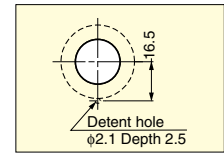
Option

Cap for thick door (PK04VB)

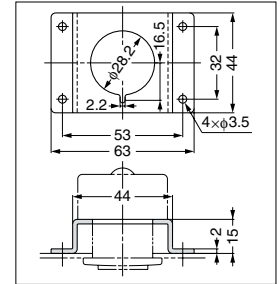


PK03

Cut Out Dimensions



Bracket for Sheet Metal



Body

Item Code	Item Name	Finish	Door Thickness (DT)	Bore Depth H	Weight	Box	Carton
100-019-954	PK03GA	Gold	15 - 35	DT 15 - 25: H=None (φ28 Hole), DT 26 - 35: H=DT-25	67 g	20 pcs	200 pcs
100-019-956	PK03CR	Chrome	15 - 35	DT 15 - 25: H=None (φ28 Hole), DT 26 - 35: H=DT-25	67 g	20 pcs	200 pcs
100-019-955	PK03BN	Black Nickel	15 - 35	DT 15 - 25: H=None (φ28 Hole), DT 26 - 35: H=DT-25	67 g	20 pcs	200 pcs

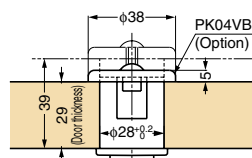
Cap for Thick Doors (Option)

Item Code	Item Name	Door Thickness	Material	Finish	Weight	Box	Carton
100-910-039	PK04VB	29 - 39	Stainless Steel (SUS430)	Plain	13 g	100 pcs	800 pcs

PUSH KNOB



Part Name	Material
Push Knob	Zinc Alloy (ZDC)
Latch Body	ABS
Cap	ABS



Features

- Push in knob to make it flush
- 15-35mm thickness without cap, 29-39mm with cap (PK04VB, sold separately)

Remarks

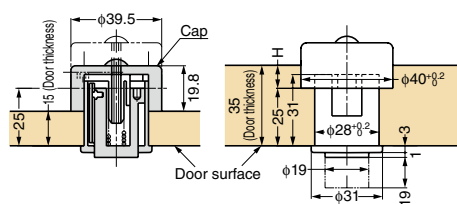
Install with bracket when applied to sheet metal.

Parts Included

Truss head screw M3x20

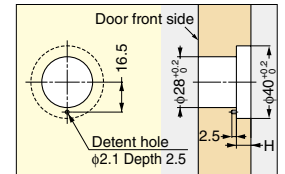
Option

Cap for thick door (PK04VB)

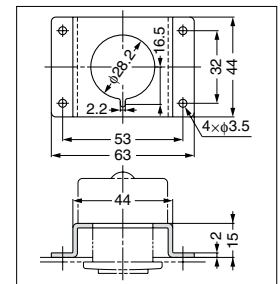


PK04

Cut Out Dimensions



Bracket for Sheet Metal



Body

Item Code	Item Name	Finish	Door Thickness (DT)	Bore Depth H	Weight	Box	Carton
100-015-025	PK04GA	Gold	15 - 35	DT 15 - 25: H=None (φ28 Hole), DT 26 - 35: H=DT-25	76 g	20 pcs	200 pcs
100-015-024	PK04CR	Chrome	15 - 35	DT 15 - 25: H=None (φ28 Hole), DT 26 - 35: H=DT-25	76 g	20 pcs	200 pcs
100-015-026	PK04BN	Black Nickel	15 - 35	DT 15 - 25: H=None (φ28 Hole), DT 26 - 35: H=DT-25	76 g	20 pcs	200 pcs
100-012-554	PK04DN	Nickel	15 - 35	DT 15 - 25: H=None (φ28 Hole), DT 26 - 35: H=DT-25	76 g	20 pcs	200 pcs

Cap for Thick Doors (Option)

Item Code	Item Name	Door Thickness	Material	Finish	Weight	Box	Carton
100-910-039	PK04VB	29 - 39	Stainless Steel (SUS430)	Plain	13 g	100 pcs	800 pcs