



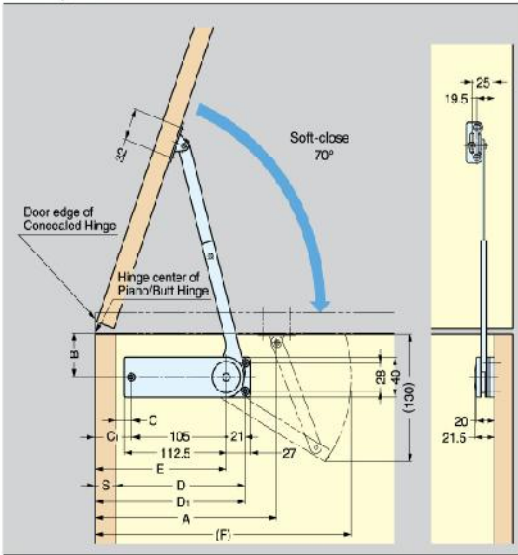
Illustration Shows Right Hand

Details

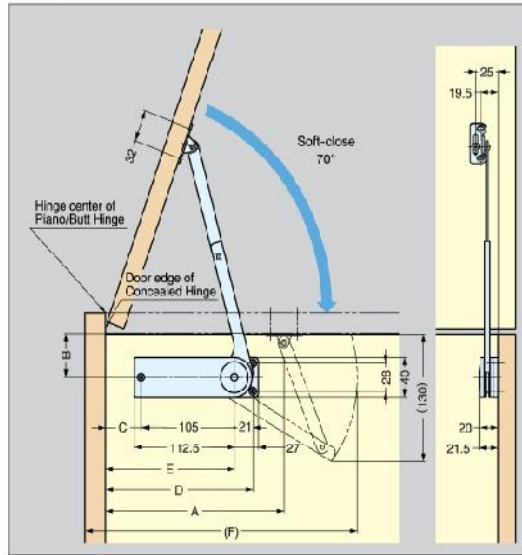
- For Top-Opening Flap Door with piano, butt or concealed hinges
- Used in pairs
- Designed to hold door in fully opened position.

Technical Diagrams

Overlay Use



Inset Use



Torque Calculation

- Torque = Door Height x 1/2 x Door Weight
- Light Duty: 140-200kg.cm (121-173lbs.inch)/pair
- Medium Duty: 200-250kg.cm (173-216lbs.incg)/pair
- Heavy Duty: 250-300kg.cm (216-260lbs.inch)/pair

Overlay Use

Hinge Type	A	B	C	D	C ₁	D ₁	E	F
Concealed Hinge			42-S	168-S	-	-	145	283.5
Piano/Butt Hinge	198.5	45	-	-	41	167	142.5	281

S=Overlay coverage in case of concealed hinge (mm)

Inset Use

Hinge Type	A	B	C	D	E	F
Concealed Hinge	203		46	172	151	286
Piano/Butt Hinge	190	45	33	159	138	273

Code	Description	Handed	Finish
FS10029	LIGHT DUTY TOY BOX STAY - TORQUE RANGE 140 - 200	LEFT HAND	BLACK
FS10030	LIGHT DUTY TOY BOX STAY - TORQUE RANGE 140 - 200	RIGHT HAND	BLACK
FS10035	LIGHT DUTY TOY BOX STAY - TORQUE RANGE 140 - 200	LEFT HAND	WHITE
FS10036	LIGHT DUTY TOY BOX STAY - TORQUE RANGE 140 - 200	RIGHT HAND	WHITE
FS10031	MEDIUM DUTY TOY BOX STAY - TORQUE RANGE 200 - 250	LEFT HAND	BLACK
FS10032	MEDIUM DUTY TOY BOX STAY - TORQUE RANGE 200 - 250	RIGHT HAND	BLACK
FS10037	MEDIUM DUTY TOY BOX STAY - TORQUE RANGE 200 - 250	LEFT HAND	WHITE
FS10038	MEDIUM DUTY TOY BOX STAY - TORQUE RANGE 200 - 250	RIGHT HAND	WHITE
FS10033	HEAVY DUTY TOY BOX STAY - TORQUE RANGE 250 - 300	LEFT HAND	NICKEL
FS10034	HEAVY DUTY TOY BOX STAY - TORQUE RANGE 250 - 300	RIGHT HAND	NICKEL
FS10039	HEAVY DUTY TOY BOX STAY - TORQUE RANGE 250 - 300	LEFT HAND	NICKEL
FS10047	HEAVY DUTY TOY BOX STAY - TORQUE RANGE 250 - 300	RIGHT HAND	NICKEL

