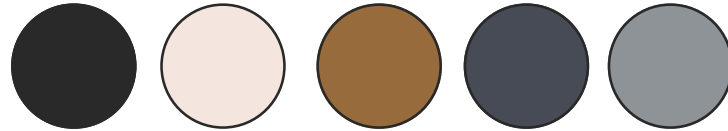

RELAXED CAPSULE WARDROBE

When you have an edited wardrobe of clothing in coordinating colors that can be worn interchangeably, it becomes easier to get dressed in the morning and create outfits that you love! A relaxed capsule wardrobe may contain staple items like linen pants, a drop shoulder top or tunic, and basketweave sandals or mules. Below is a sample of a simple relaxed capsule wardrobe, with outfit ideas or "recipes" on the following pages to give you inspiration of how they can mix + match!

FABRIC / TEXTURE



COLOR PALETTE (BASE)



LINEN TUNIC



FLOWY DRESS



BUTTON UP



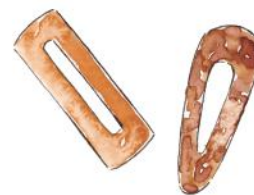
PAINTER'S JACKET



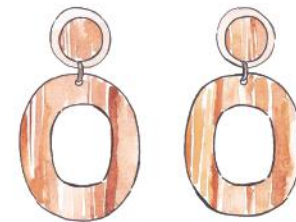
VINTAGE JEANS



LINEN PANTS



TORTOISE ACCESSORIES



NATURAL EARRINGS



MULES



WOVEN HEELS



PURSE



BASKET PURSE

RELAXED OUTFIT RECIPES



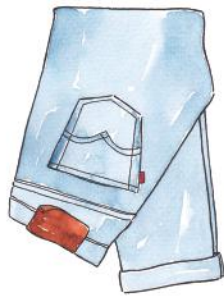
+



+



+



+



+



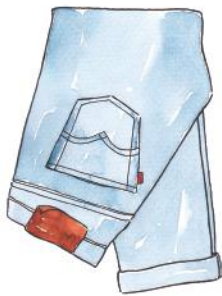
+



+



+



+



+



+



+



RELAXED OUTFIT RECIPES

