

# Sanicubic<sup>®</sup> 2 GRINDER LIFT STATION - PART N° 029



36 Ft  
328 Ft



## CONNECTIONS

- Discharge: 1-1/2"
- Inlet: Five 1-1/2" or 4"
- Vent: 1-1/2"

### Wastewater (Commercial, Industrial Applications)

The Sanicubic 2 is heavy duty duplex grinder system used to pump away wastewater from several bathrooms and fixtures from an entire building structure. This system is able to discharge the waste up to 36 feet vertical and/or 328 feet horizontal.

It incorporates a grinder system which is ideal for uncontrolled environments in both residential and commercial applications (ie. rental unit, offices, warehouses, etc). The Sanicubic 2 is designed to handle sanitary products that may have been flushed down the toilet; such may consist of condoms, sanitary napkins, q-tips, dental floss, etc.

## PRODUCT FEATURES

### PERFORMANCE

- Maximum pumping height: 36 Ft (45 Ft Shut-off).
- Maximum flow rate: 90 GPM (Both motors in operation).

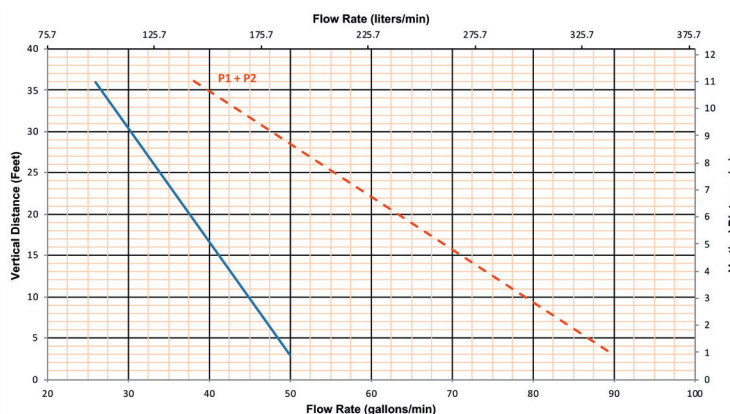
### ADVANTAGES

- Installed directly on the ground.
- Easy access for maintenance.
- Two pumps operating alternately.
- Five inlets, two of which are low (1-1/2", 4").
- System activates with a fail-proof air pressure switch system with triple redundancy.
- Stainless steel grinder.
- Rated IP68 with external control box and alarm standard.



Installation above ground

## PUMP CURVE



## STANDARD ACCESSORIES

### Control box



### Wired alarm unit



## OPTIONAL

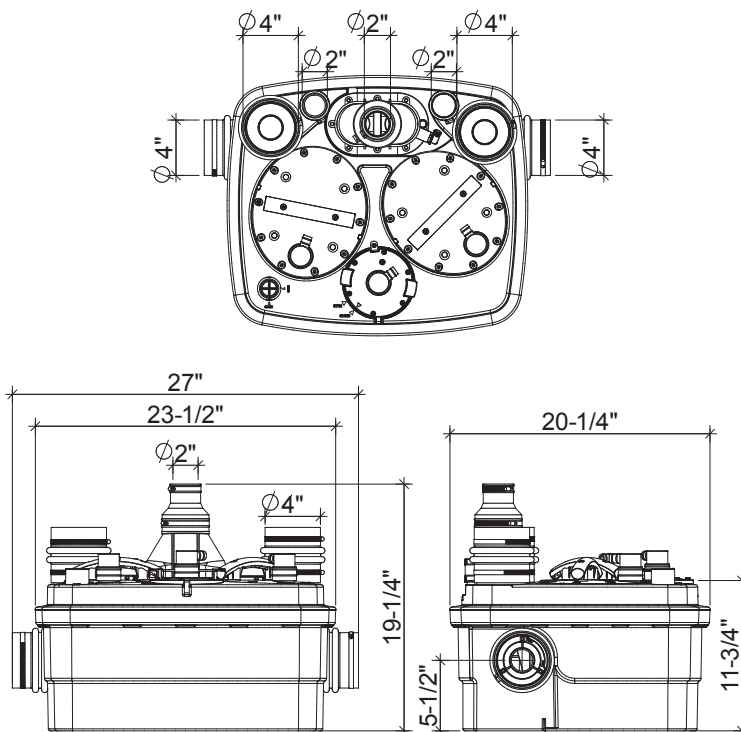
**Descaler** (Part N° 052) See page 28





Installation below the ground

## DIMENSIONAL DRAWINGS



## TECHNICAL SPECIFICATIONS

**Pump type:**

Grinder

**Electrical:**

220-240 V (208V min) - 60 Hz / 13 Amps (Max)

**Motor:**

2 x 1 HP oil-filled thermally protected motor

**Capacitor rating:**

2 x 30 microfarad

**Operating Temperature:**

158°F

**Power cord length:**

72 inches

**Noise level:**

≤ 68 dBA (Lp) (measured at 3 ft.)

**Discharge pipe diameter:**

1-1/2"

**Discharge rate at 36 ft:**

38 GPM (Both motors in operation)

**Discharge rate at 3 ft:**

90 GPM (Both motors in operation)

**Shut-off head:**

45 ft.

**Normal running time:**

Depends on number of fixtures

**Capacity:**

12.4 gallons / 47 liters

**Inlets:**

1-1/2" or 4" (side), 1-1/2" or 4" (top)

**Method of activation:**

Pressure switch, Circuit board

**Shower/bathtub base height:**

10" min

**Weight:**

77 lbs / 35 kg

**Certifying agencies:**

CSA (IPC, NSPC), IAPMO (UPC)

**Recommended accessories:**

Descaler

**Connections:**

Toilet, sink, shower/bathtub, washing machines (direct connection), etc.