

PORTING CONFIGURATION

26-2300 SERIES REGULATOR

SPRING LOADED, HAND OPERATED, BACK PRESSURE REG.

MODIFICATION FEATURES:

S.C.D.: TELEDYNE
DIAPHRAGM: VITON & E.P.

GENERAL SPECIFICATIONS:

INLET PRESSURE: SEE TABLE II
 DESIGN PROOF PRESSURE: 150% OF RATED PRESSURE
 PRESSURE RATING: PER CRITERIA OF ANSI/ASME B31.3
 OPERATING TEMPERATURE: -65°F TO +165°F
 LEAKAGE: BUBBLE TIGHT
 FLOW CAPACITY (C.V.): 60
 WEIGHT: APPROXIMATELY 2.25 LBS.
 MAX. OPERATING TORQUE: 25 IN.-LBS.

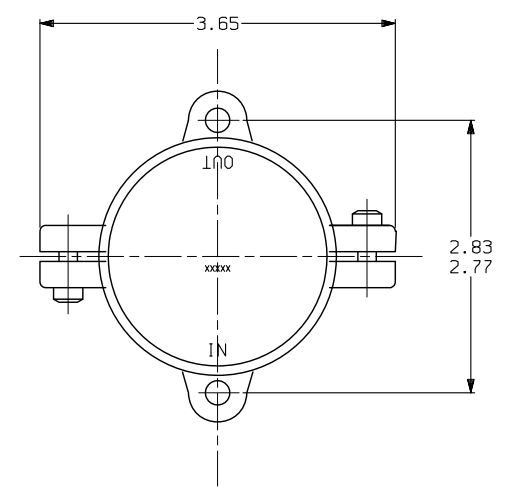
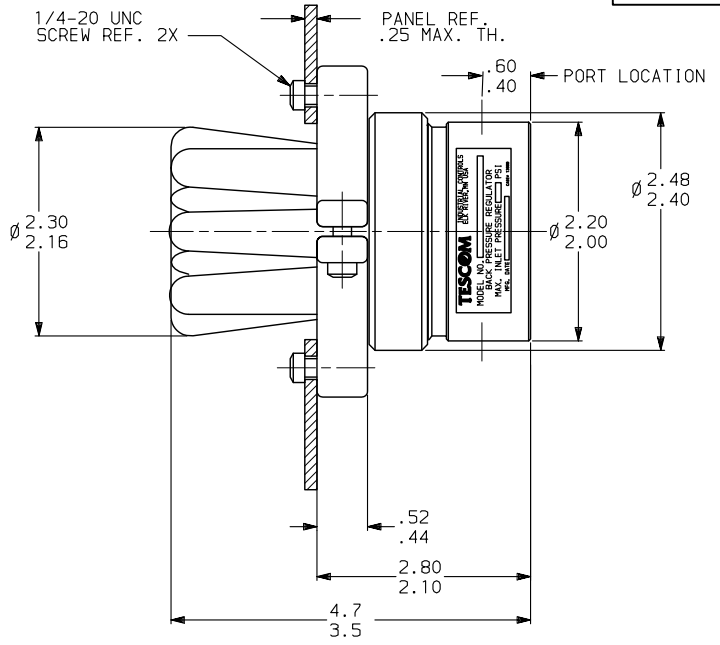
MATERIALS CONTACTING LINE MEDIA:

SEAT, MAIN VALVE: TEFLON
 SEALS: TEFLON
 O-RING: BUNA-N
 DIAPHRAGM: VITON & E.P.
 BODY: SEE TABLE I
 REMAINING PARTS: 300 SERIES SST

KITS:
 NONMETALLIC: 389-2641

REPAIR: 389-XXXX

ALL DIMENSIONS REFERENCE 26-23XX-XX-102



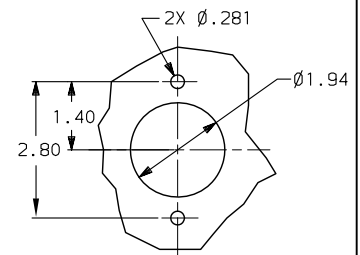
SERIES NUMBER 26-2321-24-102
 MODIFICATION NUMBER

DASH NO.	BODY MATERIAL
2	303 SST

DASH NO./LTR	INLET & OUTLET PORT SIZE
4	1/4
6	3/8
8	1/2

DASH NO.	INLET PRESSURE
0	0-50 PSI
1	0-150 PSI
2	0-250 PSI

DASH NO.	IN & OUT PORT TYPE
1	SAE
2	NPT
3	MS33649



PANEL CUT-OUT

S.C.D.: TELEDYNE

NOTES:

1. PRESSURE AT WHICH REGULATOR IS USED MUST BE COMPATIBLE WITH THE PRESSURE RATING OF THE REGULATOR AND PORT SIZE/TYPE PROVIDED.

REV.	DATE	ECO NO.	BY:	APPR
AB	2-25-10	5140-10	CMB	BJT
AA	2-4-10	5063-10	CMB	DP
Y	12-11-08	5645-08	CMB	DP
W	2-28-05	1105-05	DKD	MKS
V	6-21-02	1-02	SKO	MKS
U	9-13-01	1190-01	JLS	MKS
T	11-15-00	667-00	SKO	MKS
S	3-24-99	630-99	SKO	CRN
R	9-16-98	912-98	SKO	CRN
P	9-9-98	879-98	SKO	CRN

TESCOM CORPORATION
 INDUSTRIAL CONTROLS DIVISION
 ELK RIVER, MN USA

INFORMATION CONTAINED ON THIS DOCUMENT IS THE PROPERTY OF TESCOM CORPORATION. NO RIGHTS ARE CONVEYED NOR IS PERMISSION TO DISCLOSE TO OTHERS GIVEN.

UNLESS OTHERWISE SPECIFIED:
 .0 ± .020 ANGLES: ±1°
 .00 ± .010
 .000 ± .005

SURFACE ROUGHNESS: 100/
 CORNER & FILLET RADII: .005-.020

THREADS: CLASS 2
 REMOVE ALL BURRS
 MFG. SPEC. 60301

DRAWING MADE IN THIRD ANGLE PROJECTION (DO NOT SCALE DRAWING)

MATERIAL: X		
FINISH: X		
DRAWN BY: JLS	CHECKED BY: JH	APPROVED BY: JH
8-31-95	8-31-95	8-31-95
NAME: INSTALLATION INFORMATION		
SCALE: 2:1	SIZE: C	NUMBER: 26-23XX-XX-102
CODE NO. 13669	SHT. 1	OF 2